

No. 10

OCTOBER, 1934

POULTRY

TRIBUNE



10¢
a copy

Central Edition



A Red, White, and Blue Breeding Program
Ohio Research Reveals Value of Lighting

1 out of 5 Pullet Layers DIE!



THIS BIRD WILL NOT LIVE TO PAY YOU BACK



STOP THIS 20% LOSS

WITH PRATTS PLAN FOR
3 YEARS' EGG PRODUCTION

You can't afford to lose one-fifth your laying pullets every year. Yet government surveys show this high mortality is the rule rather than the exception. In feeding for egg production, don't forget the hen must live to pay you back. She needs Pratts Buttermilk Laying Mash not only for greater egg production but also to build vigor, strength and resistance to disease. To feed today's highly-strung pullets, home-made, inferior, forcing or haphazardly balanced foods, is to openly invite ruin.

Poultrymen everywhere are hailing Pratts Plan for 3 Years of Egg Production. It assures strong healthy flocks without sacrificing egg profits. It's a plan

that has been carefully developed by Pratt Food Company, who are not only leaders in the field of poultry feeds and medicines, but are noted for their own contest winning birds and the long life of their flocks.

Pratts has studied pullet layer mortality from all angles. They have built Pratts Buttermilk Laying Mash to produce an abundance of vitality and reserve strength together with high egg yield. Pratts Buttermilk Laying Mash is a special formula to build stamina, to promote growth while pullets lay—a formula that encourages normal glandular functions, which effect disease resistance, and a formula that produces a record yield of profitable eggs.

Pratts Plan for 3 Years of Egg Production is Free. Investigate it today. It's a proved plan. Tested on the Pratt Experiment Farm, it is bringing sensational results every trial. Go to your nearest Pratt dealer for your copy or write Pratt Food Company, Dept. 710, Philadelphia, Pa. It is sent without cost or obligation. Get your copy today.



PRATTS Buttermilk Laying Mash

Pratt Food Company, Dept. 710 Philadelphia, Pa.

2 NEW ARNDT BATTERIES ONE for BROILERS; ONE for LAYERS Specially Priced for Economy

If you are looking for a practical, rugged Broiler or Laying Battery at a low price, investigate the new ARNDT units. Specially designed by Milton H. Arndt, foremost battery specialist. Real ARNDT quality throughout yet much lower in price. When you purchase one of these Batteries you are entitled to the aid and counsel of our Advisory Service, personally supervised by Mr. Arndt.

Thousands are making money with ARNDT Battery Equipment. This is your chance to get started at small cost. Write for new illustrated folder featuring these sensational new Batteries.

Visit the ARNDT New-Era Demonstration Farm

where 9,000 birds of all ages are cared for on a single measured acre by one man and his helper. Come and see what the ARNDT Way means in healthier birds, reduced labor and bigger profits. Located at 4700 Nottingham Way, Stereoville, N. J. Open every day, except Sundays.

M. H. ARNDT MFG. CO.

Dept. 13,

Trenton, N. J.



4.95
Clock
INCREASES EGG PRODUCTION
Automatic Elec. Mfg. Co., Mankato, Minn.



ONLY \$1.95

For this 3-gallon RITE-WAY POULTRY FOUNTAIN and HEATER for winter and summer. Also made in gallon size. Drink all the way around. Approved by Poultry Tribune Experimental Farm. Sold on a money-back guarantee. ORDER TODAY or send for circular of Rite-Way Fountains and Feeders.
RITE-WAY METAL PRODUCTS CO.
Box 400
Sarasota, Mich.

Central Edition



Covering:—

Ohio
Michigan
Indiana
Minnesota
Iowa
Illinois
Wisconsin
Missouri

H. W. Yoder, Contributing Editor

(In order to keep in closest possible touch with our readers Mr. Yoder makes frequent trips through the states named above collecting news items and editorial matter relating to the poultry industry.)

October Events

Oct. 1-7, American Poultry Congress, Waterloo, Iowa.
Oct. 3-5, Indiana Poultry Assoc. Meeting, Purdue University, Lafayette, Ind.
Oct. 5, Fall Meeting, Wisconsin Poultry Improvement Assoc., Agric. Hall, University of Wisconsin, Madison, Wis.

Coming Events

Nov. 20-23, Des Moines Co. Poultry Assoc. Show, New London, Iowa. J. B. McNeil, Sec. R. S.
Nov. 28-Dec. 1, Southeastern Iowa Poultry Show, Packerwood, Iowa.
Nov. 28-Dec. 2, Dubuque Poultry Assoc. Show, Dubuque, Iowa. Shelby Potter, Sec.
Dec. 5-9, Greater Indiana Poultry and Pet Stock Assoc. Show, Indiana State Fair Poultry Bldg., Fort Wayne, Ind.
Dec. (2nd week), Madison Square Garden Poultry Show, New York City. Lincoln Orr, Orr's Mills, Cornwall, N. Y., Gen. Mgr.
Dec. 11-14, Poultry Show, Wisconsin Co. Poultry Assoc., Coliseum Bldg., Sterling, Ill. Geo. C. Beswick, Sec., Morrisson.
Dec. 12-16, 44th Annual Poultry and Pigeon Show, La Crosse Poultry Assoc., La Crosse, Wis.
Dec. 12-17, Iowa State Poultry Show, Des Moines, Ia. C. E. Smith, Sec.
Dec. 28-Jan. 1, St. Louis Poultry Show, staged by Miss. Valley Poultry Assoc., St. Louis, Mo.
Jan. 8-12, New York Poultry Show, 14th Street Armory, New York City. Fred Otte, Sec.

Trophy Shop Bought by Spies Bros.

Chicago, Ill.—Spies Brothers, Inc. now own the Trophy Shop, formerly operated here by Fred Hoeffer, at 55 East Washington Street. They plan to continue with a complete line of cuts and other trophies suitable for poultry shows and as awards in poultry events as well as trophies for general use.

W. Va. Vo-Ag Boys Visit Roselaw

Dayton, Ohio—Accompanied by their vocational agriculture instructor, H. N. Hunsucker, a group of boys, members of the Wayne county, West Virginia Chapter of the Future Farmers of America, recently visited Roselaw Farm, here. This visit was

(Continued on page 12)

POULTRY TRIBUNE Vol. 40, No. 10, October, 1934.

Published on first of each month at Mount Morris, Ill.

J. W. Watt, Publisher; O. A. Hauke, Editor; J. H. Flores, Associate Editor; G. G. Sandberg, Advertising Mgr.; H. W. Yoder, Adm. Asst.; Chas. Ventner, Circulation Mgr.; A. P. Loomis, Supr. Poultry Tribune.
Farm: Mrs. E. J. Tilton, Home Dept.

Advertising Representatives: Chicago: J. C. Billings, Inc., 123 W. Madison St., Phone Central 0455.
Eastern: Hugh Thompson, 134 Watson Rd., Fairview, N. J.
Phone, Fairview 2-7743.
Pacific: Adon A. Yoder, 608-1612 St., Oakland, Calif.

Subscription Rates in U. S. & Canada and Foreign: \$1.00 a year.
One year: 4.25 Single copies: .10
1.00 Back copies: .30

Make all remittances payable to Poultry Tribune, Mount Morris, Ill. If you change your address, notify us direct, and give both old and new address. Always state whether your subscription is a new one or a renewal, and money will be same name and initial as address on paper or else explain why you change.

Entered at the post office at Mount Morris, Illinois, as second-class matter under Act of March 3, 1879.
This issue copyrighted, 1934, by Poultry-Dairy Publishing Co., and reproduction of any editorial matter is forbidden, except by special request.



THE Poultryman who selects for layers only fully matured pullets which have big, sound frames and bodies is laying the foundation for stabilized production and a decided reduction in "laying house mortality."

Put your pullets on Ful-O-Pep Egg Mash. It is an assurance that they will produce their quota of large marketable eggs with sound shells.

The nutritious, careful composition of Ful-O-Pep

Egg Mash provides for the maintaining of the laying hen in sound body weight and health as well as for producing the maximum number of eggs—high class eggs—eggs that will bring a good price. Ful-O-Pep Egg Mash is a uniform, complete and clean feed. It gives results which produce profits.

Be sure to get the complete story of Ful-O-Pep for laying hens. A copy will be sent you free—just fill out and mail coupon below.

QUAKER FUL-O-PEP EGG MASH



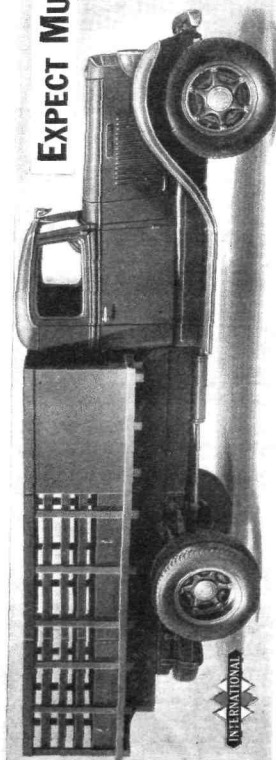
THE QUAKER OATS COMPANY
Dept. 2-J, 141 West Jackson Blvd.
CHICAGO, U. S. A.

Name

Address

THIS COUPON WILL BRING YOU THE NEW 32-PAGE BOOK FREE

EXPECT MUCH FROM THESE NEW INTERNATIONAL TRUCKS



The new streamlined Internationals, with all their beauty of line, give you International ALL-TRACTION. They give you the easy response to all the increasing demands... absolute dependability... lowest operating and upkeep costs. Sizes from 1-ton up. Chassis prices, f.o.b. factory, from \$390 up. On view at all International branches and dealers.

INTERNATIONAL HARVESTER COMPANY
OF AMERICA
(Incorporated)
606 S. Michigan Ave.
Chicago, Illinois

Egg-A-Torials by O. A. HANKE, Editor

Money for Poultry Raisers

With the passage of the National Housing Act, signed by the President on June 27, 1934, a Federal Housing Administration was created and millions of dollars became available for modernization purposes. Poultry raisers, too, may be benefited by it.

Any property owner, individual, partnership or corporation with a regular income from salary, commissions, business or other assured source, may borrow money from a national bank, state bank, trust company, savings bank, industrial bank, building and loan association or finance company, approved by the Federal Housing Administration; or by a contractor or building supply dealer.

Poultry Tribune subscribers should visit the proper loan agency. The money can be used to build new poultry buildings or repair old ones.

November Poultry Tribune will contain the first of a series of six monthly contests, featuring six popular breeds of poultry. The contest will not only be novel, but also interesting and educational. Aside from the prize money, it will have benefit features which will make it worthwhile for every Poultry Tribune subscriber to participate.

Watch for the first in this series of contests to be started next month.

A Revised Code

At this writing, plans have been completed for a public hearing on the revised National Commercial and Breeder Hatchery Code to be held in Washington at the Mayflower Hotel, September 19. At the same public hearing, a voluntary uniform national breed improvement program, which was developed at the International Baby Chick Association convention held recently in Cleveland, will be presented to the whole industry, and, if it is acceptable, it will also be incorporated in the code for 1935.

The sentiment among poultry raisers seems to be that the hatchery code was helpful during the 1934 season in reducing the poultry population, providing a better quality chick, and in furthering better business relations between hatcherymen and chick buyers. Due to the large decrease in poultry population, partly attributable to the hatchery code and partly to the very severe drought which made it necessary to sell a large part of the poultry in a number of the mid-western states, egg prices and poultry prices have shown a very satisfactory increase. This situation is, of course, very pleasing to the Agricultural Adjustment Administration, which is using this code to help poultry raisers. No benefit payments of any kind are available for them.

For the coming hatching season, it is hoped that the national, voluntary, uniform breed improvement program will be officially adopted. There will be three degrees of breed improvement represented by the words "U. S. approved," "U. S. certified" and "U. S. R. O. P." There will be three stages of disease eradication represented by the words "pullorum tested," "pullorum passed" and "pullorum clean."

If and when this plan is incorporated in the hatchery code, Poultry Tribune will publish it in detail for the information of poultry raisers everywhere. Remember that it will be a voluntary plan; many hatcherymen who produce very excellent chicks will probably not adopt the program for 1935, because it requires federal inspection and supervision.

Poultry Tribune will be represented at the Washington hearing and the details of this meeting as they affect poultry raisers will be reported next month.

The standard egg laying contests for 1934 have just closed. Next month Poultry Tribune will announce the winners.

In addition, it will award two silver loving cups—one to the highest Mediterranean breed pen and another to the highest heavy breed pen in this year's standard contests. The awards will be made on the basis of the highest 51-week record, using the point system of scoring to determine the highest pen.

Greater Buying Power

On September 1, the Agricultural Adjustment Administration announced that almost one-half of the estimated first installment of \$133,000,000 had been paid to producers participating in the corn-hog program. This payment totaling \$55,000,000 had been paid in over 566,500 checks.

Rental and benefit payments to producers cooperating in the 1933-1934-1935 adjustment program will total \$779,402,000. These benefit payments, a large part of which add to the farm income in the calendar year 1934, help to assure that farmers as a whole will have a larger cash income in 1934 than in 1933.

While production has been greatly reduced, farm commodity prices are enough higher than in 1933 to more than offset the reduced volume of production, and with benefit payments the farm buying power in the nation as a whole will be greater than during last year.

Since the first of April, farm products have increased 14.1 per cent in value, while the increase of all commodities has been only 5.8 per cent. It appears that the farmer is really much better off than he was a year ago.

Secretary Wallace is determined that the gap between industry and agriculture shall be leveled.

Poultry Tribune, published monthly in the interest of 400,000 progressive poultry raisers, contains many advertisements which feature the new products of manufacturers. You are invited to patronize these reliable firms which offer feed, remedies, equipment and stock.

A Red, White, and Blue Breeding Program

by H. L. SHRADER

Senior Extension Poultryman, U.S.D.A.

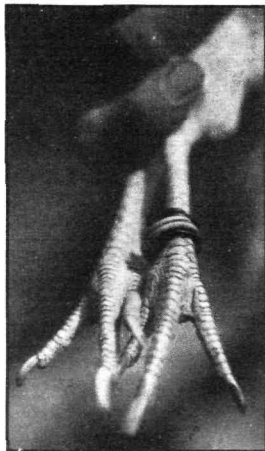
THERE has always been an element of mystery and magic in the breeding of farm animals. The breeder has shortened and turned up the nose of the hog, taken the horns off cattle and improved the quality of the meat and quantity of the milk. No wonder the breeder is compared to a surgeon, only the former works without the cutting knife.

The average poultry raiser takes the art of breeding for egg production partly as a matter of course. Sooner or later, however, he finds that no matter how well the flock is fed, how perfectly it is housed, and how much care and attention are given to raising the young stock, they can only reach a certain place in egg production without paying more attention to a breeding problem.

THE small boy with his inborn curiosity frequently takes his first watch apart to see how it is made. Modern breeders and geneticists have studied the laws of breeding in an attempt to take the animal apart just like the boy with his first watch. Unfortunately the factors of high egg production are not so plainly visible as the wheels of the watch, yet in recent years certain characteristics have been studied and a relatively simple system has been devised. This plan is not for the trapnest breeder who has the records of individuals and families, but more for the breeder who wishes to improve his flock by consistent selection.

In selecting a high production strain one of the first factors to search for is *early maturity in pullets*. A pullet is said to have reached sexual maturity at the time she lays her first egg, but to this we should add a reasonable weight for her breed. There are always a few precocious pullets that develop extraordinarily early, never reach a representative body size, are always inclined to lay small eggs and too frequently stop their production soon after their untimely start. Such pullets should never be selected for a breeding pen.

Selecting the cream of the pullet crop to be used as breeders is no holiday job, for much depends on the time the selection is made, but if we set aside a certain day we are more apt to remember the carrying out of this task. For chicks that are hatched in March and April I suggest that they be examined on November 11 and all pullets that have started to lay be given a *red* celluloid leg band. Laying pullets can be told by outside appearance for they have red comb and wattles and moist, open con-



In any breed improvement program, whether trapnesting is done or not, selection plays a very important role. Here is a program which is centered around selection, and it has merit for both the farm flock owner and the commercial poultryman.

dition of the vent. If the bird belongs to one of the yellow skin varieties she will show distinct bleaching around the vent and beak. For this fall handling we can also eliminate those birds that have not reached a reasonable body weight and those which show physical deformities such as a crooked back or twisted tail. The red banded birds then will indicate that they have done their patriotic duty by starting to lay early in life.

The next factor to consider in high egg production is the *speed of laying* that the bird develops. Sometimes this is called *intensity*, or rate of laying. Of course, the ideal way of determining this is to trap-nest the birds, but since this system is practical for only a few specialized breeders, the next best arrangement is to handle all birds on March 4 and observe their laying con-

dition. This is most easily determined on yellow skinned varieties because the bleaching of the beak and shanks shows that the bird has carried on well throughout the fall and winter months. The exact degree of bleaching varies with individual birds and somewhat with the amount of green food supplied, for we find when yellow corn and green feed are supplied a laying hen, she throws off the xanthophyll coloring through her egg yolks. If she is not producing egg yolks this coloring is thrown off through her skin. Hence a bird that has taken a Christmas vacation will show more yellow pigment in her beak and shanks than one that has laid throughout the winter. If we handle the entire flock early in March and place a *white* band on those birds that show the most persistent production we have taken another important step in the selection of high-production birds.

Next comes time for the third selection of the pullets. Summer has arrived; many of the short-winded birds which could not finish up the laying year have taken their summer vacation. The Fourth of July is a good time to go through the flock and sell the birds that are slow in production, particularly the birds that have already begun to molt. The bird with ragged, worn feathers may not look like a blue-ribbon winner compared with her sister that has clean, bright feathers, but she is the one we select for our blue leg band. A hen that has been bred for *persistency* will continue to lay throughout the warm summer months. She is given the blue leg band.

Now we have our flock of pullets pretty well decorated with colored bracelets. In a flock of 100 average pullets we should have placed 50 or 60 red leg bands for early maturity, 30 or 40 white bands for good rate of production, then 25 or 35 blue leg bands for the late molters and we have selected the cream of our flock on a red, white and blue basis, using very definite genetic principles.

The following year I would like to mate these birds with the best male bird that I could obtain. This should preferably be one whose mother had a trap-nest record that showed heavy winter production. I want to know how many eggs his mother laid, also the size and shape of her eggs, because these characteristics are inherited and have a direct bearing on the eggs that you will market the following year. Breeding programs are slow in their operation, require more attention because the work must be scattered throughout the year, yet are just as definite as a housing or a feeding program, where you can see

(Continued on page 17)

Ohio Experiment Gives New Views on Lighting

by E. L. DAKAN

Head, Poultry Department
Ohio State University

NOT MANY years ago there appeared a headline in a small town paper which announced: "Experiment Station Proves Facts Not True." The news item which followed this startling announcement gave a brief statement regarding new data which showed that what everyone had previously believed to be a "fact" was not true. I am sure poultrymen the country over can recall many such announcements.

It is with some fear that I attempt herewith to present data which show another "fact" to be false. For years I have told my students "that the increased egg production secured during the winter months by using lights to lengthen the day is due to the increased length of the eating period, the increased food consumption." I had a good story I always told at this point about the farmer who wrote in and wanted to know why the high tension line crossing his poultry yard did not make his hens lay more winter eggs.

About five years ago I began to read everything I could find that dealt with the physiology of reproduction in both mammals and birds. I discovered that scientists the world over were investigating this problem and that the literature was voluminous. One of the many conclusions of these investigations impressed me as being significant in its implications regarding egg production. I quote from Ascheim and Zondek:

"THE hormone of the anterior lobe of the hypophysis, and only this, sets the ovarian function in motion and brings the infant to sexual maturity."

This statement may not mean much the first time you read it over, but read it again. To me it means that if I start a hen laying by using artificial light, the light must in some way stimulate the anterior lobe—a part of the brain. I had been teaching for years that I could "set the ovarian function in motion" by increasing the feed consumption. Maybe I was wrong. It means that sexual maturity also is a result not of feed alone but of this same anterior lobe.

This brief article will not permit a full discussion of this subject. Many books have been written about the sex hormones secreted by the reproductive organs and the hypophysis. The scientific papers number many hundreds. It would be unfair, however, not to make

some reference to the work of Rowan who nearly ten years ago demonstrated with juncos and crows in his study of the problem of bird migration that the lengthening of the winter days by artificial light brought the ovaries into function and that this was not associated with the food consumed at night. Rowan believed the activity of the ovaries was the result of lengthening the period of physical activity of the birds. A summary of Rowan's work is worth reading. It is available in a book entitled "The Riddle of Migration," published by The Williams and Wilkins Co., Baltimore.

BISSENETTE repeated the studies of Rowan, using starlings, and concluded that neither food consumption nor exercise were responsible for ovarian development but that the absorption of light stimulated the hormone secretion of the hypophysis and these in turn stimulated the ovary to activity. Bissonnette's papers appear in scientific journals not available to the average reader of this article.

In 1932 experiments were undertaken at the Ohio State University to apply the discoveries of Rowan and Bissonnette to chickens. First we wanted to find out just what was the relationship between lights, food consumption, and egg production. Two years' work has been completed; the following tables are summaries of these experiments:

TRIAL I

A Comparison of the Use of Artificial Lights on Laying Hens Under Varying Conditions of Food Supply.
(80 Feherspratched Leghorn pullets per pen.)

	Pen 6	Pen 7	Pen 8	Pen 9
Month	Lights and Feed at Night	Lights—no Feed at Night	Reduced Light	Alternate Light
Aug.	15.2	13.5	8.4	9.6
Sept.	16.8	19.9	7.7	4.2
Oct.	15.8	14.9	11.0	16.4
Nov.	13.7	15.5	9.5	9.9
Dec.	12.2	12.6	11.3	6.2
Jan.	14.5	15.0	17.9	11.1
Total	87.2	85.4	65.8	57.4

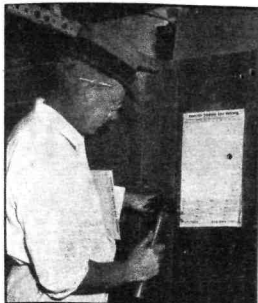
It will be seen from a study of this table that Pen 7 which had the feed boxes covered from 5 p. m. to 7 a. m., allowing only ten hours for feed consumption, laid 85.4 eggs per hen in six months, and Pen 6, which had fourteen hours of feeding time, laid 87.2 eggs per hen during the same period. The difference is not significant and the conclusion is that ten hours of feeding time gives the birds all the time necessary for food consumption when lights are used to lengthen the day. Pen 7 fell behind a few eggs right at the beginning of the test and this was probably due to the changes made when we began covering



Will this experiment lead to important discoveries on the more effective use of light in poultry husbandry?

their feed boxes at 5 p. m. They were already in production and were accustomed to normal daylight feeding, which in August is about fourteen hours. From October to January, Pen 6 laid 56.2 eggs per hen and Pen 7, 58 eggs per hen. Pen 8 was given greatly reduced light. This was secured by covering the windows so that even the daylight admitted was just enough to permit the birds to eat and drink. This pen has little to do with our main problem. It does, however, indicate that when the light is below a certain threshold the egg production suffers. Pen 9 had just ten hours per day of feeding time from the beginning of the experiment to the close. The lights were used, however, in alternate periods. Whenever lights were added the production jumped up and whenever the lights were discontinued the production fell to practically nothing. Remember no change

(Continued on page 16)



The new laying year starts with October. Tuck up a new record sheet in each pen of the laying house. Record sheets like the one shown here may be secured from Poultry Tribune.

EXCEPT FOR very late hatched birds, all pullets should be housed before the end of September. In cases where there is a surplus of pullets, they can be taken care of very nicely through the late fall right on the range by wrapping sisal paper around the roosting sheds.

This also makes an ideal way to care for capons. I kept some in a range shelter all last winter. Plenty of good mash and grain should be supplied to keep them growing and putting on fat until ready for market. Capons fit in nicely after the main rush of the turkey market is over.

LET ME REMIND you that it would be well to arrange some special market for your turkeys and avoid, if possible, the usual promiscuous dumping on the Thanksgiving market of more turkeys than can be consumed for a holiday feast.

Turkey is rapidly being added to the menu of most good eating places from October until well after the New Year. Like corn fed beef, a turkey should be kept gaining in weight right up until killing. A moist mash is very much relished and particularly so if milk or semi-solid milk is used.

TIME WOULD be well spent in checking the weights of a few pullets in the flock as they come into heavy production. A loss of body weight is usually followed by a slump in production.

I RECENTLY checked up prices on the necessary ingredients of a good home mixed mash and found it would cost us practically as much as a good commercial ration.

OCTOBER is about the last chance for repairing a poultry house. Leaky roofs and cracks in walls invite trouble later on. One half inch of insulation board is equivalent to two boards with building paper between. A good wind-proof sisal paper put around the



Poultrymen who have had trouble with rockers, fighting, and killing each other may be interested in the experience of J. A. Hanson, Corvallis, Oregon, noted White Leghorn breeder. He has found that the best protection is to allow them to range in fields of heavy grain, wheat or oats.



Poultry Tribune Experimental Farm at Mount Morris, Ill.

Timely Tips!

by A. P. LOOMIS

Sup't. Poultry Tribune Experimental Farm

walls would be a great deal better than nothing at all.

WITH THE days growing shorter, some attention should be given to a good source of vitamin D. Cod liver and sardine oil are both very good. Open sunshine is always "in style" while we get it. When the weather is too cold for this, both agricultural glass or glass substitute are fine, but they must be kept clean for best results.

MANY WILL be vaccinating this month against colds and roup. In flocks where these troubles come year after year, vaccination



(Poultry Tribune Experimental Farm Photo)

October is a good month in which to check the roosting arrangement in the laying house. Be sure the birds have plenty of roosting space. This photo shows a new type individual roost which protects the birds from crowding on the roosts.

with avian mixed bacterin will help in the majority of cases.

FOR THOSE who expect to do any hatching or sell eggs for hatching, October is a fine time to test the flock for pullorum disease (B.W.D.). Reactors should be taken out immediately to avoid later infection.

JUST NOW our old hens are getting lights for a midnight lunch from 12 to 2 o'clock. Later on most of them will have dim all-night lights. I still use morning and evening illumination for pullets, although they respond very nicely to all-night lights.

MOST HENS are given oyster shell, but I believe a lot of flocks don't get enough good sharp grit, particularly when housed in winter. Yes; they can get along without any, but unless hard sharp grit is present in the gizzard, feed may not be as thoroughly digested.

SEPTEMBER 30 ends a year with us, so far as daily egg record sheets are concerned. Every room has its own sheet with spaces for a full year's production. Every flock owner should keep a record of production, and this

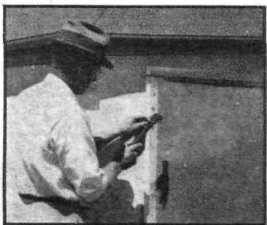
is a very convenient way to do it. Not only should egg production records be kept, but all expenses and sales should be recorded in order to know what the flock is really doing. A lot of people hate to keep books on anything, but a simple record book printed by Poultry Tribune simplifies the job a lot as it has space for purchases, sales, eggs and chicken used at home, and a hatching and brooding record.

WITH THE first frosts and disappearance of green vegetation, young fruit trees are often injured by rabbits and mice. The best permanent wrapper is 1/4-inch mesh hardware cloth. It should be eighteen inches high and fastened with hog rings. This allows room for the tree to expand. Sisal paper also makes a very good wrapper.

IN THE NORTHERN states, plans must be made this month to provide warm water for the flock during the winter. The use of special electric heating elements, lamp heated fountains, or thermos fountains are all practical. There is a new electric water heater which operates by a thermostat and keeps the water at the same temperature all of the time.

When thermos fountains are used, of course they must be filled with warm water. These fountains are heavily insulated, and will keep the water from freezing for many hours.

A RECENT TABULATION of the trapnest birds in the college flock at Utah State Agricultural College, over the past 12 to 15 years, shows that birds starting to molt before the first of September usually take from one and one-half to three times as long to go through the molt and come back into laying condition, as those which lay up until October before starting to molt.



(Poultry Tribune Experimental Farm Photo)

When cold weather comes, glass substitute in the windows protects the birds from bad weather, and allows ultra violet rays which provide vitamin D to pass through.

A BILLION DOLLAR INDUSTRY

Are You Giving or Taking?

Poultry and eggs are the most staple and dependable income producers on the farm. Poultry is one of Uncle Sam's few billion dollar industries.



Many thousands of producers contributing to this great industry are not taking a profit.

It is not difficult to get into the profit-taker's class. Keep good stock, feed the best feeds, cull properly, house well, keep the fowl clean and healthy. Gather the eggs several times daily in order to get top prices. Run the poultry department as a business.

Oyster shell is a small-cost essential to health and large egg production—costs about 3 cents a year per laying hen.

PILOT BRAND OYSTER SHELL is always dependable. It is clean, containing no waste or poisonous matter. Keep it before laying hens all the time.

On sale at feed dealers everywhere.



OYSTER SHELL PRODUCTS CORPORATION
New York St. Louis London, Eng.

PIKGARDS
PREVENT PICKING
ALL THE BONES OF THE
J. E. LAYTON
BOX 3247, SEATTLE, WASH.

POULTRY WIRES
for all purposes
Full line of highest grade wire fabrics and supplies at low cost.
Crown's electric welded wire for fencing fences illustrated. Buy direct—save. Catalog free.
CROWN IRON WORKS CO.
1371 Tyler St., N.E., Minneapolis, Minn.

EARN UP TO \$25 OR MORE
weekly, growing mushrooms in cellars or outbuildings, all fall and winter. We instruct you and buy crop. Double free.
ADAMC MUSHROOM COMPANY
Dept. 126 Toronto 10, Canada

Egg and 'Poultry Prices!

Low Egg Production Reflected In Higher Prices—Excellent Winter Prospect For Poultry Profits.

(Written September 13)

Poultry raisers last spring who went ahead and made plans for their usual good flock of pullets this fall, apparently will have reason to be glad of it.

Although a considerable increase in wholesale egg prices is shown in the principal markets, the rise in prices at a great many country buying points has been even greater. A great many sections of the country are reporting prices 5 to 7 cents a dozen higher than a year ago.

There no longer seems any doubt that egg production will be considerably lower this fall and winter. Receipts of eggs at the four principal markets, Chicago, New York, Philadelphia and Boston since the first of August have been about 12 per cent less than a year ago, and receipts at more than 200 central western points in the same period have been about 40 per cent less than a year ago. The

number of laying hens and pullets in farm flocks on August was the smallest since the U.S. Department of Agriculture began collecting records in 1925.

About the only uncertainty on the market is consumer reaction to higher prices. Naturally, if prices go too high in relation to other foods, consumers simply will stop buying eggs and buy other foods instead. At present, however, consumption in the four principal markets is practically the same as last year, and in New York it has been gaining.

The constant consumption of eggs with a lower supply of fresh eggs necessarily calls for a greater use of storage eggs. Storage holdings have been reduced, since August 1 almost twice as rapidly as either last year or the five-year average, 1929 to 1933, for the month of August. Consequently, storage holdings of shell eggs September 1 were down to 7,936,000 cases, well below last year's holdings of 8,944,000 cases, and the five-year average of 8,508,000 cases on that date.

Poultry likewise has shared in the gain in prices. Receipts of dressed poultry at the four largest markets has been somewhat under marketings of last year, but central western receiving plants have been getting much heavier supplies of poultry than last year.

The increase in storage holdings has been about normal. On September 1, there were 46,054,000 pounds of poultry in storage, compared with 47,789,000 pounds a year ago, and a five-year average of 41,616,000 pounds.

FACTS, NEVERTHELESS

By Carl H. Schroeder



FRENCH SQUAB-GROWERS PRECHEW THE PIGEON FEED CONSISTING OF MILLET AND PEAS. THE CHEWED FEED IS BLOWN FROM THE MAN'S MOUTH DIRECTLY INTO THE MOUTH OF THE SQUAB. IN THIS MANNER A GOOD "GRAVEUR DES PIGEONS" CAN FEED 2000 PIGEONS A DAY

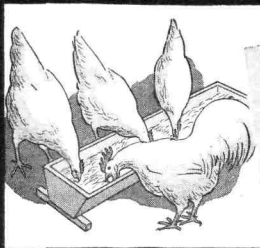
BY MEASURING THE ELECTRIC POTENTIAL DIFFERENCE ON THE EGG SURFACE FERTILE EGGS CAN BE DISTINGUISHED FAIRLY ACCURATELY FROM INFERTILE, WITHOUT PREVIOUS INCUBATION

LIGHTS ARE SUPPOSED TO MAKE THE HEN EAT MORE AND, AS A RESULT, STIMULATE PRODUCTION. PROFESSOR ROWIN HAS DEMONSTRATED THE REVERSE TO BE TRUE: LIGHTS STIMULATE PRODUCTION AND, AS A RESULT, THE FLOCK EATS MORE.

EGGS HALF WHITE AND HALF BROWN ARE LAID BY A LEG-HORN, BELONGING TO MR. GILBERT WHITLOCK, SPERRY ROAD, BETHANY, CONNECTICUT.

BORNE—BY—

A NEW TREATMENT *for* WORMS IN POULTRY



**SINGLE-DOSE FLOCK TREATMENT
95 PER CENT WORM REMOVAL
NON-TOXIC TO THE BIRD**

It has been found that nicotine is the surest and safest material for expelling round worms (*ascaridia lineata*) from poultry. (The U. S. Dept. of Agriculture recognizes no material or combination of materials as being effective against all kinds of poultry worms. No treatment for tapeworms and caeca worms is accepted by parasitologists.)

How to best administer nicotine in sufficient quantity and strength to get the worms, and without harming the bird, have been big problems. These problems have been definitely solved in Dr. Hess Poultry Worm Powder. Because it is in combination with other elements its worm-expelling power is not released until it reaches the lower intestine, where the worms are. Because it is in powder form it can be given in a very small quantity of regular mash.

Dr. Hess Poultry Worm Powder has already been proved for you—has been

proved in tests with thousands of birds. *In these tests, it was over 95 per cent efficient!* It does its work generally within 24 hours. It has not the slightest harmful effect on the bird. Does not throw a flock off production or affect feed consumption.

And another important point, the cost of using Dr. Hess Poultry Worm Powder is very small—about a cent per bird for the smallest flocks and a half-cent per bird for the larger flocks.

So see your local Dr. Hess dealer for Dr. Hess Poultry Worm Powder. He has it in various-size packages. Purchase the package that contains enough to dose your entire flock. Dr. Hess & Clark, Inc., Ashland, Ohio.

NOTE If you prefer individual treatment to flock treatment, you can also purchase Dr. Hess Poultry Worm Tablets. They contain exactly the same material in every respect as Dr. Hess Poultry Worm Powder. Only difference is that the powder has been pressed into tablets for individual dosing.

DR. HESS

• **POULTRY WORM POWDER**

1934 OCTOBER 1934

1	2	3	4	5	6
7	8	9	10	11	12
13	14	15	16	17	18
19	20	21	22	23	24
25	26	27	28	29	30
31					

**MORE EGGS
IN 15 DAYS OR YOUR
MONEY BACK /**

MAKE YOUR HENS LAY

Speed up backward hens and pullets. For only a few pennies you can flood your nests with eggs, now, while prices are high.

Good layers as well as loafers will increase egg production in 15 days. Simply add 2 pounds of Pratt's Poultry Regulator to 100 pounds of mash. This is a concentrated tonic, containing rich blood-building, egg-making minerals and rare imported herbs that bring immediate results.

• • • Results that you can see at once. Shorter moulting. New pep. Increased vigor. Brighter combs. **MORE EGGS.** Two cents a day puts new life in 100 hens.

This is Pratt's guarantee. If you do not begin to see these results in 15 days your money will be cheerfully refunded. See your dealer or sign coupon below.

PRATT FOOD CO., Dept. 737
Philadelphia, Pa.

I enclose \$1.00 for a generous trial package of Pratt's Poultry Regulator, sufficient to regulate 125 hens for 30 days. Postage paid.

Name _____
Address _____
City _____ State _____

Pratt's POULTRY REGULATOR

USE KRESO DIP No. 1 TO DISINFECT POULTRY HOUSES

FREE Booklet

KRESO DIP No. 1
the first standard-
cost tar dip.
Kills lice, mites, dis-
ease germs—cleanses.

**Drug Stores Sell
Parke Davis Products**

Send for free booklet No. 163 on "Poultry Sanitation". Address Desk K-48-K

**Animal Industry Dept. of
PARKE DAVIS & CO.
DETROIT, MICHIGAN**

IMPROVED ACME EGG GRADER

Now only \$2.35 (Postpaid)

MORE EASILY READ. Induced and used by U. S. Govt. Official scale World's Fair egg laying contest—at low low prices! Sturdily built of aluminum—no springs, rivets, or adjustment. Guaranteed.

**THE SPECIALTY MFG. CO.
2363 University Ave.
St. Paul, Minn.**

Send for
ACME
Today

Money back guarantee

Quick — Automatic
Accurate — Easily Read

Questions and Answers

Letters from subscribers answered free. Send 3 cent stamp for return postage. Do not send chickens or other material to *Poultry Tribune* for examination, but we will be glad to advise you where to send them.

by J. H. FLOREA
Service Department

Why Conflicts In Advice?

I am a wonderer at this poultry business and want to learn a little. Why do all poultry books insist that you keep your laying flock shut up and still demand plenty of exercise, exercise and green food? Why not turn the birds loose?

Also one book I have says to get the pullets good and fat as they won't lay very long, while another says to be careful to not get them fat. What is a poor fellow going to do?—J. L. N. Mo.

Answer: Like any other business, considerable judgment is required in interpreting advice on poultry raising and applying it to your own conditions. No one set of instructions or advice will apply to all poultry raisers, and each poultryman must select that which he can use—sometimes only after trial and error.

For the average poultry raiser who has plenty of clean range available, we believe there is hardly a poultry authority who would not advise letting the laying flock have outside range, at least in nice weather. On the other hand, the commercial poultryman who is striving to produce especially uniform, high quality eggs will usually have better success by keeping his birds confined, at least during most of the day.

• • • Likewise, it is not desirable to have pullets which are extremely fat when they come into production, but they must have good body weight with sufficient reserve to carry them through a period of heavy production in winter. The use of a good well-balanced growing ration will usually produce such pullets without any particular effort on your part as far as feeding is concerned.

Leading Poultry States

What states lead in poultry production, egg production, turkeys, ducks?—H. L. Fox.

Answer: According to the 1930 census, the first five states in the number of chickens raised were Iowa, Missouri, Illinois, Texas and Kansas, while the first five in number of eggs produced were Iowa, Missouri, California, Texas and Illinois, in that order.

Texas produces almost three times as many turkeys as the next closest state, North Dakota. New York and Illinois are first and second, respectively, in duck production, and Illinois and Iowa rank first and second in the production of geese.

Visiting Hours at P. T. Farm

I would like to visit your farm, and I wondered when visitors are permitted?—J. R. W. Mich.

Answer: Visitors are welcome at Poultry Tribune Experimental Farm any day except Sunday. We prefer to have visitors come between 8 a. m. and 4 p. m.

What Premium to Charge?

I am planning to market my eggs by mail to customers in a nearby city. Do you think it would be satisfactory to set a definite price which will be charged the year around, or what is the best plan for establishing a price when eggs are sold direct?—C. M. Olin.

Answer: Although an occasional poultryman may be able to get a definite price the year around, we do not believe this is the best practice to follow for it makes it rather difficult to hold customers during the season of lower prices, and the price established by the year may not be entirely fair to either the poultryman or the customer for the level of egg prices may change considerably from year to year.

It would be better, we believe, to base your price on a definite premium over the wholesale price which your eggs would bring in the city in which you are selling. Such a premium should, of course, cover the extra

PROTECT YOUR POULTRY PROFITS

STOP Infections

Accompanying
ROUG, COLDS, CANCER,
AND FOR CHICKENS

They just use healthy birds
This year you used disease-pre-
vention. That's your eye on the gold
mine and save every hen!

VACCINE

Use only B-B Avian
Mixed Bacterin, new made in
Big 100 Dose size for greater protection
and economy. Recommended by lead-
ing authorities. Easiest Surest.

**B-B AVIAN
BACTERIN**

Now in the big 100 Dose—twice the
former dose—at same price. Every dose
prepared in our own Hospital Laboratories
under U. S. Veterinary License No. 17.
Simple—easy to use. Economical—costs
only 1/2¢ per bird for large flocks. Order
B-B Avian Mixed Bacterin from this ad.

FOR CHICKEN POX—Use Fluoro-Bac Strain
100 Dose—\$2.75. 1000 Dose—\$25.00.
1000 Dose—\$25.00. 1000 Dose—\$25.00.

FREE

Chickens Bred for
Eggs and Health
According to
Avian Mixed Bac-
terin (Big 100
Dose) from
GORDEN HORN
\$2.00 per 1000
\$4.00 per 2000
\$6.00 per 3000
\$8.00 per 4000
\$10.00 per 5000

WORMS

DOUBLE SHOTS

"Individual
Dosing"
Get Round, Pin and Tame worms at same
price. 100 Dose—\$2.75. 1000 Dose—\$25.00.
Only 1¢ per bird for one or a couple. Order
from G. H. H. Co. Free Poultry Sheet
Course—no cost.

BESE LABORATORIES, INC.
Dept. 335 St. Paul, Minn.

NEW LOW PRICES

GOOD YEAR

Firestone Goodrich

U.S. AND OTHER TIRES

\$2.15

294-4-40-21

Save on Tires
Why
pay high
prices for tires?
Save money on all
standard brands and
other tires by the special
plan of "Admiral's Scientific
Tire Sales". Adams tires are fully
guaranteed to give twice the
service under average road
conditions for 12
months and backed by the
financial resources of
this well-known company.

FREE

With each order
for 2 or more
tires, full size
genuine wall tires.
Refundable cash
on 100% return.
No money to lose.
See dealer for
details.

NEW TUBE

With Each Order
for 2 or more
tires, full size
genuine wall tires.
Refundable cash
on 100% return.
No money to lose.
See dealer for
details.

DEALERS WANTED

ALL TUBES GUARANTEED BRAND NEW

Double G.T.D. If you want real, full, double G.T.D. tires, contact—
Monthly written guarantee—no money to lose.

ADAMS TIRE & RUBBER CO., Dept. K-75
255 So. Michigan Avenue, Chicago, Ill.

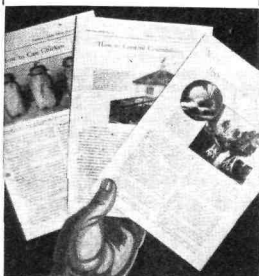
**DR. HESS
POULTRY
TABLETS**

WHEN you hear the first sneeze, add Dr. Hess Poultry Tablets to the drinking water. It helps to prevent the spread of infection. In more advanced stages requiring a local treatment, also bathe the swollen parts with a strong solution of Dr. Hess Poultry Tablets.

Dr. Hess & Clark, Inc., Ashland, Ohio

cost of cartons and mailing, and provide sufficient extra income to pay you for the additional work involved in selling by mail. It is probable that a premium of about 10 cents a dozen would cover these costs, depending somewhat upon the quantity which you sold at one time.

Leaflets for Subscribers



The following leaflets and circulars which have been prepared to aid our readers may be obtained by addressing the Service Department, Poultry Tribune, Mount Morris, Ill. If you wish, you may clip this notice and check those leaflets that you want, sending along the postage indicated. Don't forget to give your name and address.

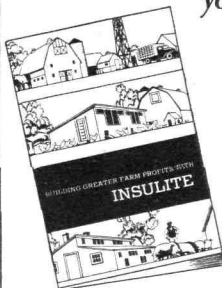
- ☐ No. 1, How to Control Round Worms and Tape Worms in Poultry with list of worm remedies—6 cents in stamps.
- ☐ No. 2, How to Control Coccidiosis in Chickens—3-cent stamp.
- ☐ No. 3, Instructions for Caponizing—3-cent stamp.
- ☐ No. 4, How to Ventilate a Poultry House—3-cent stamp.
- ☐ No. 5, Egg and Poultry Buyers—3-cent stamp.
- ☐ No. 6, Poultry Tribune's Special Egg Record Sheet—10 cents in stamps.
- ☐ No. 7, Plans for Egg Cooling Cabinet—3-cent stamp.
- ☐ No. 8, Canned Chicken is Tasty and Convenient—3-cent stamp.
- ☐ No. 9, How to Control Roup and Colds in Poultry—3-cent stamp.
- ☐ No. 10, All Night Light—3-cent stamp.
- ☐ No. 12, Starting and Growing Rations—3-cent stamp.
- ☐ No. 13, Laying Rations—3-cent stamp.
- ☐ No. 16, Answers to 10 Common Questions on Housing—3-cent stamp.
- ☐ No. 19, Controlling Cannibalism, Feather Pulling and Egg Eating—3-cent stamp.
- ☐ No. 20, Direct Selling Information for the Poultryman—3-cent stamp.
- ☐ No. 21, When and How to Vaccinate for Chicken Pox Control—3-cent stamp.
- ☐ No. 22, Caging the Layers—3-cent stamp.
- ☐ No. 23, Blackhead Control—3-cent stamp.
- ☐ No. 24, Broiler Production—3-cent stamp.
- ☐ No. 25, Figuring a Balanced Ration—3-cent stamp.
- ☐ No. 27, That New Bronchitis Vaccine—3-cent stamp.
- ☐ No. 28, How to Control Lice and Mites—3-cent stamp.
- ☐ No. 29, How to Spot the Non-Layer—3-cent stamp.
- ☐ No. 30, Stop That Thief—3-cent stamp.
- ☐ Complete List of Products Approved After Test on Poultry Tribune Experimental Farm (Includes brooder stoves, brooder houses, feeders, fountains, insulation, etc.)—3-cent stamp.
- ☐ Bul. 1, How to Build a Range Shelter for 125 pullets—25 cents.
- ☐ Bul. 3, Newest Model 24 x 24 Combination Roof Laying House Blue Print—15 cents.
- ☐ Bul. 4, How to Build a Brooder House (blue print)—15 cents.
- ☐ Bul. 5, Blue Print and Plans for Two Story 1500-Hen House—25 cents.
- ☐ Bul. 6, Blue Print and Plans for 20x40 Shed Roof House—15 cents.

Clip this list and mail to

Poultry Tribune, Mount Morris, Ill.

YOU NEED THIS BOOK!

...It tells how to increase your poultry profits



Send this coupon for your copy of this book

INSULITE

The Original Wood-Fiber Insulating Board

THE INSULITE COMPANY
1021, Builders Exchange Building, Minneapolis, Minnesota
Please send me your book, "Building Greater Farm Profits with Insulite."

Name.....
P. O. County.....
R. D. No. State.....

YOU want to make more money from chickens. Do it the way thousands of other poultry raisers have.

Insulate your laying and brooder houses with INSULITE, the original wood fiber insulating board. You will keep out cold and dampness... reduce feed costs during cold weather... promote better health... increase egg production... raise young chicks easier.

This book, endorsed by agricultural colleges and county agents tells the advantages of insulating poultry houses... shows the latest approved plans for housing your chickens... explains why Insulite will give you more for your money in insulating efficiency, added strength to your buildings, resistance to moisture, vermin, and decay.

Increase your winter profits... Line your poultry houses with Insulite now.



There's NO BREAK IN PRODUCTION

"Black Leaf" Worm Powder offers a most effective and very inexpensive way to kill large Roundworms. Just mix in the mash and feed once.

Odorless, tasteless, it has no toxic effect on the birds, and it does not interrupt production. "Black Leaf" Worm Powder is nicotine in a new form.

MIX IN MASH

When fed in mash, the Powder passes directly to the birds' intestines, and where the worms live.

Sold by dealers, or in bird size sent postpaid for 75c and your dealer's name. Descriptive circular free.

"Black Leaf" Worm Pellets—Made from Worm Powder, and just as effective, are available for individual dosing. 100 sent postpaid for 50c and your dealer's name. A few Pellets are included in every package of Worm Powder for birds off feed.

"Black Leaf 40" KILLS LICE

"Black Leaf 40" kills adult body lice and feather mites. It has plenty of nicotine in stable form and there will be enough on the roosts to kill newly hatched lice for days. Under normal conditions, "Black Leaf 40" gives a thorough clean-up... A drop on the birds' necks kills head lice... Sold by dealers everywhere.



Black Leaf
WORM
POWDER

Tobacco By-Products & Chemical Corp.,
Incorporated... Louisville, Kentucky

PULLETS BRED FOR PROFIT — MANY TO SELECT FROM
Large vigorous English Type Leghorns of various ages up to laying stage. PRICED RIGHT. Many years' breeding increases egg production. Also hens and breeding cockerels. C.O.D. on several—"Inspection privilege" at your Express Office before you pay. Catalogue explains all.
FAIRVIEW HATCHERY & POULTRY FARM, Box P. R. 2, ZEELAND, MICH.

POULTRY TRIBUNE for OCTOBER, 1934—Page 11



200
Styles
and
Sizes of
Stoves,
Ranges,
Furnaces

850,000 Customers
have proved the economy of

FACTORY PRICES!

Approved by
Good Housekeep-
ing Institute

Mail coupon now—get this exciting, colorful Free catalog, spanning with over 175 illustrations—200 styles and sizes—174 Ranges, 12 Different Heaters, 22 Furnaces. More bargains than in 20 Big Stores. Quality the same that over 850,000 satisfied customers have trusted for 3 years.

What This Great Catalog Offers

1. Combination Gas, Coal and Wood Ranges; Coal and Wood Ranges; Circulating Heaters; Furnaces—both pipe and one-pipe type—all at FACTORY PRICES.
2. Cash or Easy Terms—Year to Pay—A New Money-Saving Payment Plan.
3. 30 Days Free Trial—360 Days Approved First.
4. 24 Hour Shipment—Safe Delivery Guaranteed.
5. \$100,000 Bank Bond Guarantee of Satisfaction.
6. 5 Year Parts Guarantee.
7. FREE Furnace Plans—FREE Service.

Read about the marvelous "Oven that Ploids in Flame"—and other new features.

"A Kalamazoo Direct to You"
Trade Mark Registered

Porcelain Enamel Heaters—both Walnut and Black. Also Wood-burning stoves. Make a double saving by ordering your furnace at the factory price. Install it yourself. Thousands do. It's easy. FREE plans. Buy Your Stoves Direct From the Men Who Make Them

You don't have to pay more than the Factory Price. Come straight to the Factory. Mail coupon now.

THE KALAMAZOO STOVE CO., Mfrs.
15 Rochester Ave., Kalamazoo, Mich.
Warehouses: Utica, N. Y.; Akron, Ohio

FREE Catalog

KALAMAZOO STOVE CO., Mfrs.
15 Rochester Ave., Kalamazoo, Mich.

Check articles in which you are interested.

Dear Sirs: Please send me your FREE Catalog.

Name _____ (Please Print Name Please)

Address _____

City _____ State _____

Porcelain Enamel Heaters ☐ Coal and Wood Ranges ☐ Circulating Heaters ☐ Stoves ☐ Free Plans ☐



Porcelain Enamel Combination Gas, Coal and Wood Ranges



Porcelain Enamel Circulating Heaters



FREE Furnace Plans



FREE Plans

News . . .

(Continued from page 2)

a planned stop-over while on their way to the World's Fair in Chicago, as thousands of Roselawn chicks were supplied these boys last spring for their practical poultry projects. The party had both a pleasant and practical visit in noting the up-to-the-minute hatchery and farm equipment of Roselawn Farm as well as seeing the fine pedigreed birds from which their own project flocks originated.

Brooks Joins Quaker Oats

Chicago, Ill.—The Quaker Oats Company, here, has announced the employment of Prof. F. D. Brooks, formerly of Purdue University. He will be state agent for New York in poultry service work for the Quaker Oats Company, and will make his headquarters at Horseheads, New York.

Large Show Planned at St. Louis

St. Louis, Mo.—A poultry show here December 28-January 1 inclusive will be staged by the Mississippi Valley Poultry Association, announces R. E. Pierce.

This St. Louis show is expected to be one of the largest shows of the season, coming near the end of the smaller local shows. Centrally located, St. Louis also offers one of the largest fields for future business because the territory within a 100 mile radius supports more hatcheries and more poultry industries than any other like territory. Pierce points out it is especially convenient for specialty club meets. A low entry fee has been established to make it especially attractive also to the small breeder.

Further information may be secured from R. E. Pierce, Sorento, Ill.

Indiana Plans Good Poultry Program

Lafayette, Indiana—Indiana poultry raisers and hatcherymen will have an outstanding educational program at the State Poultry Association meeting, October 3-5, at Purdue University, here.

The first day will be devoted to hatchery problems; the second to poultry production problems; and the third to a discussion of turkey raising.

A detailed program may be secured from Leon Todd, Poultry Department, Purdue University, Lafayette, Indiana.

NEW VENTILATING WINDOW FRAMES

ONLY \$1.28

Clay Air-Flo Frames, complete with metal casing, a new type of ventilating wings at this record-breaking low price.

The best poultry house window ever developed. With regular wood sash, provides an ideal, adjustable ventilating window. No sticking. No rattling.

Easy To Add Light And Ventilation In Old Poultry Houses — Lowest Cost Window For New Buildings.



Use Wood Sash A Light \$9.15



Simple to install. . . put them in yourself. . . Fit between existing 24 inch windows. Before building, or remodeling, get the facts on Clay Air-Flo Windows.

Sensational New Glass

Real glass . . . guarantees a continuous flow of health . . . bringing Ultra Violet Rays to you . . . Prevents Bacteria. Get more production . . . save on feed and medicine.

The biggest money-making investment any poultry raiser can make. Get prices on Clay wood sash with Vita Glass to replace your present windows, or for new Air-Flo windows.

Dept. 104 CLAY VITA GLASS CORP., PT-104 Cedar Falls, Iowa



Vaccinate NOW

Protect Your Poultry Profits—STOP costly infections and have a healthy paying flock. Quick and easy to do with dependable ASL products—"Standard Since 1921."

ASL Mixed Bacterin (Avian)—The original, for prevention and treatment of mixed infections accompanying Roup, Colds and similar conditions. 1 cc per dose; 60 cc, \$1.50; 125 cc, \$3.00; 250 cc, \$5.00; 1000 cc, \$15. (See Special Combination Offer below.)

ASL Cholera-Typhoid Bacterin—For cholera and typhoid occurring singly or associated in same flock. Prices same as Mixed Bacterin.

All-Metal 5 cc Syringe—Outfit for bacterins. Nothing to break or get out of order. Complete with 2 needles, \$1.50. Extra needles, 15c.

Pow! Pow! Vaccine—To prevent pox (dewhead) and diptheria (canker). Use chicken strain for growing stock—pigeon strain for mature birds where danger of set-back in laying. Either strain, 100 doses, \$1.00; 500 doses, \$4.00.

Use Gaffi-Vermis to control Blackhead. A specific for pin worms; 1/2 pt. (about 125 doses) \$1.25; Pint, \$4.00; Quart, \$7.00. Special Bulk Syringe, 25c.

Kalamazoo-Nicotine Worm Caps, 100, \$1.00; 500, \$4.75; 1000, \$9.00.

On all orders for ASL Mixed Bacterin (Avian) direct from this ad (no substitutions) we will include K-W Worm Caps FREE equal to the number of bacterin doses: 250 cc Mixed Bacterin—750 Caps, etc.

SPECIAL COMBINATION OFFER THIS MONTH

American Scientific Laboratories, Inc., Box 310, Polo, Illinois



PRIZE CUPS—TROPHIES

Medals and other awards for all seasons. Complete line of best makes at lowest prices. Ask any poultry journal about our line.

Write for FREE catalogue

THE TROPHY SHOP

27 E. Monroe St. Chicago, Ill.

SPROUTED OATS

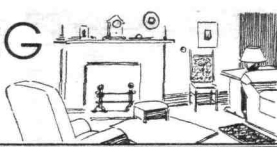
Makes Layers Out of Loafers

Successful Goulde Sprouter grows in week's time 8 bu. low cost eggs making green feed from 1 bu. high priced grain. Get lowest summer prices now on Brown House, etc., with small down payment, delivery later. Postal brings information. Specify which interest you want. One Nation Insulator Co., 268 Third St., Des Moines, Iowa.



HOMEMAKING

By MRS. E. J. TILTON,
Home Department Editor



Poultry Canning Has Broad Appeal

GRAMMAR school finished, in days of old the further schooling of the girls of the family was usually summed up thus, "No use sending the girls to school anymore, they'll only get married anyhow." Today's view is different, more far-reaching.

Mrs. Thomas A. Edison, wife of the world renowned inventor and benefactor of mankind, in a radio address advised, "If family finances make it necessary to choose between giving a boy or girl higher education, the girl should be elected." More and more we realize as, former President Hoover stated, "The unit of America is the family and the home. It is the economic as well as the moral and spiritual unit. But it is more than all this. It is the beginning of self government. It is the throne of our highest ideals. It is the source of the spiritual energy of our people. For the perfection of this unit we must bend all our material and scientific ingenuity. For the attainment of this end, we must lend every energy of the government."

What an ever widening circle for better homes will radiate from the training in home making gained by the Smith-Hughes classes in home economics at Mexico, Missouri! Miss Esther Lee Bride, their instructor, summarizes it thus, "My girls have won over \$200 in

them, the girls planned and canned balanced meals in the laboratory and also in their homes."

AFTER the project was finished the girls scored their various canned meals on the following points: attractiveness of color and texture; balance of protein, fat, carbohydrate; adequate calories, minerals, vitamins; cost of food and canning; score of each jar against standard score card. In this way we selected the canned meal to enter the International Canning Contest at the Century of Progress. The chosen meal was made up of vegetable soup, chicken, mixed pickles, corn-cob, wax beans, stuffed apples for salad, and rhubarb for pie. This type of work has been very interesting to both the students and their parents, leading to the extensive home canning of chicken among farm girls.

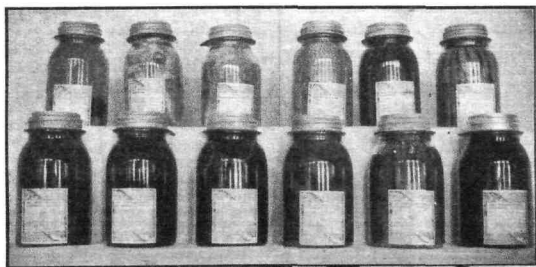
Three cheers for the "Home Ec" girls of Mexico, Missouri. High praise to their loyal teacher, Miss Esther Lee Bride, whose distinguished leadership has advanced her to a wider field of service as Home Economics Director of the Union Electric Light and Power Co. of St. Louis.

"Teaching," said Charles E. Lindberg, father of the famous Lone Eagle, "requires an unusual amount of judgment, as well as pa-

Poultry Tribune's Subscriber Service Department includes question and answer service on Homemaking problems and styles. If there are questions about heating the home, about canning, about styles or other kindred Homemaking subjects send a stamped envelope addressed to the Homemaking Department. This month ask us to send you a new money-saving style book.—Editor.

tience. It is unquestionably the most important work being done by humanity, with the exception of the mother's work."

HOW we should love to linger longer to learn more of and from the girls of the Mexico home economics classes, but here is Mrs. Frank Loeger, Route 1, Farmerville, Illinois, home maker for 24 years, with 385 ribbons won at fairs to the credit of her art as a home-maker. She was also a prize winner in the "Balanced Meal with Poultry" at the 1933 International Canning Contest. "Poultry," says Mrs. Loeger, "plays a most important part in my meal planning for the year. I plan meals with chicken, or other poultry, at least twice each week. Each year I can 30 to 40 quarts of chicken, the same number of guineas, and last year I canned 4 turkeys. In canning chicken never can honey pieces. Cook them. Pick from the bones, and process the meat for delicious creamed chicken or chicken sandwiches. For fairs, I can all white meat in a jar, but for the use of my family I



Twelve jars which took first prize at International Canning Contest, Century of Progress, sponsored by Ball Brothers Company, 1933. Canned by first year vocational home economics group at Mexico High School, Mexico, Missouri. Jars are: Vegetable soup, chicken, pork tenderloin, corn on cob, carrots, wax beans, mixed pickle, yellow tomato preserves, orange marmalade, stuffed apples, rhubarb, lo-buffoes.

cash prizes, and several other valuable prizes for food preservation, in the past two years.

At the 1933 International Canning Contest the first year girls won a \$50 cash prize and a silver trophy with an entry of twelve quarts of canned foods. My second year home economics girls won a prize with their balanced meal entry, using chicken as meat. Entry in these contests was begun as a natural outgrowth of our work in meal planning. The girls plan meals and prepare them in their school kitchens, and at home. A number of students are rural; therefore it is essential that they build their meals around foods which are available to them. It is also important that a rural cellar be well stocked with "balanced meals" both for the family and unexpected guests. With this situation before



Both first and second year vocational home economics girls at Mexico, Missouri, High School with silver loving cup won by group in International Canning Contest at Century of Progress in Chicago.



Don't Let Acid Indigestion Spoil Your Fun!

LIFE is too short to let one evening after another be spoiled by heartburn, gas, fullness and sour stomach. Do as millions do, keep a roll of Tums on hand in purse or pocket. Tums contain no soda or water soluble alkalies, only soothing insoluble antacids that pass off undissolved and inert when the acid conditions are corrected. They're refreshing, pleasant. No bad taste, no after-effects. Use at all drug stores.

Free
TUMS
TUMS ARE
ANTACID...
NOT ALKALINE
For a laxative, use the mild, dependable Vegetable
Laxative NR (Nature's Remedy). Only 25 cents. NR

WANTED!
Man with Car
To Run Store
On Wheels
Sell the largest,
finest quality line
of daily necessities
from your car.
No experience
necessary. Hundreds now making

\$6 TO \$24 A DAY
Our proposition is entirely different from
all others. Our advertising half sells the
goods for you. Premiums, samples and gifts
all make business come your way. Business
is permanent, pleasant and profitable. (89)
BE A DOUBLE MONEY MAKER
Two entirely different lines, 241 items, a
male at every home. Two lines mean two
profits. We will give you liberal credit.
Write for details about our new proposition.
FURST-MENESS CO., 113 Adams St., Freeport, Ill.

WANT MEN
for TEA AND COFFEE ROUTES
ROUTES PAY UP TO
\$6000
A WEEK

Buy reliable, national company needs more men immediately
to take charge of fine serving Tea and Coffee Routes. Pre-
vious experience as driver, sales or business necessary. You must
be willing to put in a full day's work for a fair day's profit.
These Routes pay up to \$600 a week. Enroll itself at
once. We give brand new Ford Tudor Sedan to
professionals. Rush names and post office address to
this new before your neighborhood route is snapped
up by someone else. Get facts today.

**ALBERT MILLS, Route 67,
5234 Monmouth Ave., CINCINNATI, OHIO**

\$25 A WEEK FOR YOU
and work 12 hours a week. Great plan (Un-
limited) to break 1934 Royal season. Ask for
new free Library 4, send 3-ct. stamp for
mailing. Get details, learn what, why,
how, where, 1934 facts. Plymouth Rock
Squab Co, 324 H St., Melrose, Mass.

prefer equal parts of dark and white meat in
each jar. The fleshy pieces, such as drum-
sticks, thighs and breasts, are placed in a
sterilized jar raw. Salt is added, and the jar
processed in a hot water bath for three hours."

REMEMBER Mrs. Kate E. Cooney, Shir-
land, Illinois, about whom we read in Janu-
ary, 1933, *Poultry Tribune*? At the 1930
International Canning Contest, she won sev-
enth place with her jar of canned chicken.
In 1931 a jar of canned raspberries brought
her a beautiful silver trophy and \$50 in cash.
In 1932 a jar of chicken, canned almost a
year before, won first place in the canned
poultry classes, and second place in the canned
meats entries.

Was she satisfied with such high honors?
Not Mrs. Cooney. In 1933 she entered a
delicious red and white balanced meat in that
class. This entry of cranberry and pineapple
cocktail, chicken breasts, asparagus (bleached),
beet relish, pears for salad, red raspberries
for dessert was defeated for the grand cham-
pionship only by the entry of Mrs. William
Klingberg, who is her sister.

Mrs. Cooney writes, "I consider canned
chicken a most valuable aid for meal plan-
ning. One can prepare it in so many differ-
ent ways. It is delicious served with hot bit-
ter-leaves; makes a tempting salad; cannot be
excelled as sandwich filling. Any way you
choose to serve it, it meets with delighted ap-
proval."

"I think chicken should be one of the most
important meats for farm folks. Can surplus
chickens in the fall when prices are poor.
Chicken will keep any length of time, if properly
canned."

"In canning, I prepare six at a time,
dressing them and cooling for about 24 hours.
After cooling, cut into sections. Cook in an
open kettle, until bones slip easily from the
meat. Place in sterilized jars. Pour broth
until jar is filled. Add 1 1/2 teaspoonsful of
salt. Partially seal and process for one hour
under ten pounds pressure. Remove jar from
cooler. Tighten lids, perfecting seal. After
attempt to tighten seal after jar is cooled, as
this breaks the seal. This will give you about
three quarts of delicious canned chicken with
a toothsome, firm jelly."

Leaver Urges Construction of Good Poultry House Foundation

Charles H. Leaver is one of the poultry-
men in southern Wisconsin who has a first-
proof house. "The secret is in the founda-
tion," he says, "but I am also proud of the
ventilating system."

The foundation is of cement built in a
trench fifteen inches deep and six inches wide.
The top of this, level with the ground, sup-
ports a super-footing which is four inches
wide. This is above ground and is visible at
a varying height to suit the contour of the
land which slopes to the west. Under the
floor of the house itself are seventeen inches
of cinders and crushed rock. Over this is
one inch of rough cement topped by one inch
of finishing cement.

"Many people use the rough cement for
floor," Leaver says, "but I think it is too hard
on the feet. Finishing cement costs only a
trifle more, and I believe it pays. A hen with
sore feet is not at her best."

The house is double ceiled everywhere except
on the front, which faces south. The
windows are covered with a patented glass
substitute and are adjustable.

A block of slanting slats, 6 feet by 3 1/2
feet, is set between each pair of windows,
about one foot from the floor of the house.
This throws the fresh air in and above the
birds. It hits the double boarded ceiling and
spreads about the house. Besides this, one
long board, also between the windows, but
near the top, swings out for additional ven-
tilation. This was found necessary to keep
the ceiling dry. Under the eaves, at the back,
are outlets which release the foul air.

In front of the roosts Leaver has adjust-
able floor curtains for the coldest weather.

The house is 90 x 20 feet, divided into
five rooms; four are 20 x 20 each, and the
fifth, 10 x 20, is used as a home for the
breeding cockles. One acre of land adjoining
the house is fenced into runs which divide
the plum orchard and the edge of the alfalfa
field. By plowing alternate runs Leaver
keeps the ground clean and fresh—M. L.
Bauchle, Wis.

This FREE BOOK "How to Raise Poultry for PROFIT"

tells How to Get
More Eggs, Save on
Feed, Avoid Sickness
and Losses, Raise
Fat Broilers Quickly



THIS amazing book tells how
hundreds make big money with
Poultry—how YOU can make it pay you handsome
profits—more or full time. No matter where you live
or what you do now—there's quicker, bigger money
in scientific Poultry Raising. FREE BOOK is yours
for the asking—no "strings"—no obligation!

**Be a Poultry Expert—Make \$35
to \$75 a Week—Learn at Home!**

Poultry Experts needed—for good positions with
Poultry Farms, Breeding Concerns, Hatcheries, Egg
Packing Plants, and other branches of billion-dollar
industry. Our Employment Dept. helps you get
such a job when you are ready! Or, if you want to
be your own boss—here is one business you can
start in "on a shoe lace." You may get small—
and multiply profits by tried,
tested methods—essential for
hundreds of others!

HARRY M. LAMON

Executive, National Poultry
Institute, 8 Dept. of
Agriculture, Bureau
of Poultry, 100
International Authority
on Poultry. Also
Poultry Production
Dept., 1000
International and
Poultry Institute,
Inc., Dept. 213-J, 2005 15th
Street, N. W., Washington,
D. C.

**Write for
FREE BOOK TODAY**

Just send brings "How to
Raise Poultry for Profit"

telling how Harry M. Lamon
trains you at home, in spare
time, to make big money.

Send for your free book today.
Poultry Institute,
Inc., Dept. 213-J, 2005 15th
Street, N. W., Washington,
D. C.

**COSTS 12 KILLS LICE
WHILE
HENS SLEEP!**

...says Prominent Colorado Poultryman.
JUST PAINT THE ROOST

"Fratts Roost Paint is not only cheapest, but best,
because it works without disturbing hens. One appli-
cation—and lice and mites were killed. I wouldn't
think of using anything else!" ...Bert Fratts of lice
are better layers. Fratts—the only 100% active Roost
Paint—costs only about half as much as kerosene emulsion
60%—no handling of birds necessary. Results guaranteed.

FREE BRUSH WITH EVERY CAN

1/2 Pint . . . 1.25 1/4 Gallon . . . 6.00

If your dealer can't supply you, check size wanted, enclose
amount with name and address, and mail for

PRATT FOOD CO., Dept. 635, Philadelphia, Pa.

Pratts ROOST PAINT

Starts Hens Laying

Here's a New Way to Get Eggs in Winter.
Costs Nothing! Try

Mrs. C. H. Wagner, Milwaukee, Wis.,
has a real idea for chicken raisers who
are not getting plenty of eggs. She says:

"On Nov. 1st, our 150 pullets were not lay-
ing. I gave them Dun Sung and got 364 eggs
in the next 3 weeks! sold \$75 worth in December,
and \$100 worth in January. The birds were
strong and healthy all winter, and cackled like
it was spring."

Dun Sung, the Chinese brand of tablets which
Mrs. Wagner used, are opening the eyes of
chicken raisers all over America. These tablets
can be obtained from Burrill-Dugger Co., 178
Postal Station Bldg., Indianapolis, Ind. Poultry
raisers whose hens are not laying well should
send 50 cents for a trial package (or \$14 for the
extra large size, holding 3 times as much). Don
send is positively guaranteed to get the work
or money refunded, so it costs nothing to try.
Now is the time to start giving Dun Sung to
your hens so you will have a good supply of
fresh eggs all winter.

KILL WORMS

Before They Put You Out Of Business



Worms kill birds—steal food—wreck profits

NOW NEW "Split-Action" CAPSULE DOES THE WORK OF TWO Ordinary Worm Treatments

Nicotine destroys round and pin worms—Kamala gets the tapeworms. But, government bulletins say—when given together, these drugs interfere with each other and satisfactory results are impossible.

Pratts new N-K Capsule revolutionizes worming because it works by SPLIT-ACTION! First, by releasing nicotine into the intestines to kill large round and pin worms. Hours later—an inside capsule is crushed by the gizzard to release fresh, full-strength Kamala to destroy tape worms. In one operation, at one low cost, worms are cleaned out as thoroughly as though you had used two separate capsules.

Stop using treatments that the U. S. Dept. of Agriculture says get but part of the worms. Only Pratts N-K Capsule gives "Split-Action". They cost no more. Get your supply now—to delay worming is dangerous!

IF DEALER CAN'T SUPPLY—MAIL ORDER

If dealer cannot supply, check the package wanted, enclose amount specified together with your name and address, and mail to:

Pratt Food Co., Dept. 666, Philadelphia, Pa.

No. of Capsules (Adult Size)	Birds Over 3 lbs. (Chicks and Pullets Size)
50.....	\$0.85
100.....	1.50
500.....	7.50
1000.....	10.00

PRATT'S "Split-Action" N-K CAPSULES

PATENT APPLIED FOR



Cynogras finds them wherever they are. They can't get away. They're gassed to death instantly—never again to steal feed and eggs, murder chicks, rob you of profits.

A few cents' worth per rat role does the job. Recommended by Federal and State officials. Buy at Drug, Hardware or General Stores. FREE Booklet—Write Dept. 35 American Cyanamid & Chemical Corporation 30 Rockefeller Plaza New York

CYANOGAS

pat. reg. U.S. Pat. Off.

KITSELMAN FENCE

Factory to You—We Pay Freight You save every penny possible. We make one: "I got a penny for this egg. What did you get?"
Horse-High, Pig and Chicken-High. Pump-speaker-arrived. Farm Fence, Steel Posts, Barb Wire, Gates, Paints, Rollings.
Kitseleman Fence, Box 14, Muskegon, Mich.

August Report United States Egg Laying Contests

Breeds: Rhode Island Red, White Leghorns, New Hampshire Reds, Barred Rocks, White Rocks, White Wyandottes, Australorps, Buff Rocks, Light Brahmans, Embury Leghorns, White Minors, Buff Leghorns, Anconas, Silver Wyandottes, Buff Orpingtons, Jersey White Giants, Blue Andalusians, Lady Beantons, Lohs, Low Comb Reds, Land Bantams, Lamonas, White Bantamvenders.

Summary of Standard Contests

High Pen of Each Breed—Eleventh Month

		Eggs	Points	
Breed	Contest	Date	Hatch	Owner
R.I. Red	Maine	2740	2880.00	Lord Ross
R.I. Red	Florida	2742	2878.50	Dana P. Yds.
R.I. Red	N.Y. Central	2487	2526.20	James Dryden
R.I. Red	Pennsylvania	2346	2468.65	Red Mt. Farm
R.I. Red	Maine	2318	2381.00	Kalef Farm
R.I. Red	Pennsylvania	1925	2045.50	J. W. Kennedy II
R.I. Red	N. J. Vineland	1977	2030.10	Overbrook Fm.
R.I. Red	N. Y. State	1835	1930.00	Paw-wag Fm.
R.I. Red	Maine	1738	1850.00	Mrs. M. M. Clarke
R.I. Red	Florida	1700	1767.75	H. L. Day
R.I. Red	Florida	1701	1759.00	Colquhoun P. Farm
R.I. Red	Ohio	1754	1757.29	Ward's P. Farm
R.I. Red	Texas	1717	1694.25	Erskine's Associates
R.I. Red	N.Y. State	1456	1440.80	C. L. Grayson
R.I. Red	So. Dakota	1407	1394.55	Mrs. L. L. Larson
R.I. Red	Ohio	1342	1366.00	G. H. Price
R.I. Red	N. Y. State	1216	1241.00	W. C. Dale
R.I. Red	Ohio	1260	1260.00	W. W. Penhous
R.I. Red	So. Dakota	1198	1143.25	Mrs. G. M. Baldwin
R.I. Red	Maine	1112	1120.00	Hop Farm
R.I. Red	Maine	1020	1017.00	S. E. Raymond
R.I. Red	Maine	717	717.00	S. E. Raymond

High Pen of Each Breed—Eleventh Month

R.I. Red	Maine	309	330.00	Geo. R. Trudwell
R.I. Red	Pennsylvania	302	321.45	Foreman P. Farm
R.I. Red	Rhode Island	280	304.20	Hubbard P. Farm
R.I. Red	Maine	266	286.00	E. A. Hart
R.I. Red	Ohio	270	290.00	Overbrook Farm
R.I. Red	Maine	234	254.00	Mrs. M. M. Clarke
R.I. Red	Michigan	232	252.15	Fisher P. Farm
R.I. Red	Ohio	224	244.00	L. L. Day
R.I. Red	Texas	224	244.00	Colquhoun P. Farm
R.I. Red	Ohio	220	235.95	Ward P. Farm
R.I. Red	Pennsylvania	224	235.00	Erskine's Assoc. Yds.
R.I. Red	N.Y. State	211	221.00	W. C. Dale
R.I. Red	Maine	233	253.00	A. A. Arnold
R.I. Red	N.Y. State	200	210.15	Mrs. H. H. Price
R.I. Red	N.Y. State	191	206.00	W. C. Dale
R.I. Red	Ohio	200	210.15	Mrs. J. L. Larson
R.I. Red	So. Dakota	194	201.85	Mrs. G. M. Baldwin
R.I. Red	Florida	187	198.25	C. L. Grayson
R.I. Red	Maine	177	186.00	Hop Farm
R.I. Red	Maine	108	108.00	S. E. Raymond
R.I. Red	Ohio	101	104.70	C. W. Penhous

High Pen of Each Standard Contest—Eleventh Month

Breed	Contest	Eggs	Points	Owner
Maine	R.I. Red	2740	2880.00	Lord Ross
Maine	W.L.	2742	2878.50	Dana P. Yds.
Pennsylvania	W.L.	2709	2720.75	G. A. Leavelle
Ohio	R.I. Red	2318	2381.00	Red Mt. Farm
N.Y. Western	W.L.	2578	2515.80	A. A. Seidel
W.L.	W.L.	2578	2515.80	J. F. Nickles
Michigan	W.L.	2608	2640.00	E.C. Foreman
W.L.	W.L.	2540	2540.00	Erskine Farm
N.Y. Central	W.L.	2425	2508.00	Max Johnson
W.L.	W.L.	2424	2507.00	Erskine Farm
N.J. Hatterden	W.L.	2415	2442.75	G. C. England
N.Y. State	R.I. Red	2414	2417.00	Long Saddle
N.J. Vineland	W.L.	2247	2368.00	Kwaly Farm
N.Y. State	W.L.	2266	2341.40	Schuyler Farm
N.J. Pennock	R.I. Red	1928	1924.80	Schuyler State H.
R.I. Red	W.L.	2470	2547.00	Kear Chickens, Inc.

Summary of Non-Standard Contests

High Pen of Each Breed—Tenth Month

Breed	Contest	Eggs to Points	Owner
R.I. R.	Connecticut	2509	G. B. Treadwell
R. I. L.	Connecticut	2407	Irving B. Kewsey
R. I. L.	Connecticut	2046	James Dryden
R. I. R.	Connecticut	1958	Hubbard Fms.
R. I. R.	Connecticut	1953	Kalerok Fm.
R. W.	Connecticut	1583	C. L. Hohman
M. O.	Missouri Nat'l.*	913	Pearl Parker
W. G.	Illinois*	813	Alex Htch.
M.	Mississippi	751	Colonial Pl. Fm.
M. H.	Illinois*	615	Kim's Pl. Ser.
A. Bra.	Illinois*	625	Amx Htch.

High Pen of Each Breed—Tenth Month

R.I. Red	Illinois	287	Lozan Lee. Farm
R.I. Red	Connecticut	257	Hubbard P. Farm
R.I. Red	Connecticut	257	R. C. Cobb
R.I. Red	Massachusetts Nat'l.	252	Hubbard P. Farm
R.I. Red	Connecticut	230	Mrs. E. J. Breckinridge
R.I. Red	Massachusetts Nat'l.	220	Massachusetts Nat'l.
R.I. Red	Massachusetts Nat'l.	220	Massachusetts Nat'l.
R.I. Red	Massachusetts Nat'l.	184	Colonial P. Farm
R.I. Red	Illinois	150	Alex Hoch
R.I. Red	Illinois	129	Overbrook Farm
R.I. Red	Illinois	88	Key's P. Ser.

High Pen of Each Non-Standard Contest—Tenth Month

	<i>Eggs</i>		
	<i>Breed</i>	<i>Date</i>	<i>Owner</i>
<i>Connecticut</i>	R.I.R.	2559	G. B. Treadwell
<i>Connecticut</i>	W.L.	2082	Geo. Bagby, Jr.
<i>Connecticut Nat'l</i>	W.L.	1210	Geo. Bagby, Jr.
<i>Illinois</i>	W.L.	1150	Henrich's Leg. Fm.
<i>Mississippi</i>	W.L.	1085	Gulfkist Pl. Fm.

*Only five hens to a pen.

During the last Presidential election, a farmer's wife—when shipping eggs—was one: "I got a penny for this egg. What did you get?"
Early (this September) a letter from a political stump-speaker arrived.
"Dear Madam," it said, "I received your egg—for nothing."

New Views on Lighting

(Continued from page 6)

in feeding time was made with this pen. This pen adds further weight to the conclusion that it is the length of the lighting period and not the length of the feeding period which produces results.

TRIAL II

A Comparison of the Use of Artificial Lights on Laying Hens Under Various Conditions of Food Supply.

Month	Pen 1		Pen 2		Pen 3		Pen 4	
	No. Lights	Light Fed	No. Lights	Light Fed	No. Lights	Light Fed	No. Lights	Light Fed
November.....	6.21	10.27	10.70	9.61				
December.....	17.00	21.47	22.35	21.82				
January.....	18.46	18.27	17.81	18.46				
February.....	13.36	13.33	14.99	14.72				
Total.....	25.12	40.94	40.91	40.61				

THE above table gives the second year's work (1933-1934) on this angle of the problem. It will be seen that in this trial an effort made to determine an additional factor; that is, whether the birds might derive some benefit from drinking at night. In Trial I the drinking fountains were not removed at night in any of the pens. The above table shows that Pen 1, which had no artificial light, laid during the four months' trial about ten eggs per bird than any of the other pens, all of which had all-night lights. The birds in Pen 2 had feed and liquid milk before them at night and averaged 65.94 eggs per bird. Pen 3 had feed but nothing to drink from 5 p. m. to 7 a. m. The average production was 65.91. Apparently the birds can drink enough in ten hours to meet their requirements. In fact we weighed all milk consumed and this pen actually consumed 1.5 pounds more milk per bird per month than Pen 2. Pen 4 had lights and milk all night, but no feed from 5 p. m. to 7 a. m. The production was 65.01 and indicates that the birds do not need feed more than 10 hours per day.

The two trials reported above do not answer our problem completely. We do not know whether the lights produce their effect by increasing the exercise period or because of light absorption as claimed by Bissonnette. An experiment was planned to test this but failed because of mechanical difficulties. It was the problem we intend to investigate this year.

TRIAL III was an effort to see if there was a difference in results secured when different colors of light were used. The experiment was conducted in 1932. The house used had all daylight excluded. Artificial ventilation was used and the lights were operated 24 hours each day. The mechanics of this experiment should be explained, but space prevents. It should be borne in mind, however, that the amount of illumination in all pens was equalized and an effort made to have only the one factor of light color vary throughout the four pens.

TRIAL III

A Comparison of Various Light Colors on Egg Production (70 Yellow-labeled Lohs, Pullets per pen)

Month	Pen 1	Pen 2	Pen 3	Pen 4
	White light	Red light	Yellow light	Blue light
August	17.4	19.3	18.5	16.6
September	16.1	17.4	13.1	12.1
October	10.4	15.4	8.0	9.9
November	11.5	12.1	13.2	7.6
December	10.1	7.7	10.0	5.2
January 15	5.0	6.1	7.1	4.6
Total	70.5	78.0	69.9	56.0

THE above table shows that for the five and one-half months of the experiment, Pen 2 with red lights produced 78 eggs per hen. Pen 1, with white light, and Pen 3, with yellow, produced the same results and Pen 4, with blue, produced only 56 eggs. These results check fairly well with Bissonnette and indicate that the long light rays (red) have an indirect stimulating effect on the ovaries, while the short light rays (blue) have a depressing or inhibiting effect.

In 1933-1934 the use of various light colors was given a second trial. The experimental results were very different from the 1932 trial. Instead of eliminating all daylight, we merely added the artificial light to the normal daylight. This was done by hanging the lights over the roosts about eighteen inches above the birds. The lights were used at night only. All sorts of trouble were encountered in this experiment. Cannibalism started. In Pen 9 the red light pen, 84 per cent of the birds were injured more or less. The birds in this pen refused to roost under the artificial lights. They sat on the floor, in the nests—anywhere but under the lights. A night man was put on and eventually the birds were persuaded to roost properly by compulsion. We enclosed the roosts so they could not escape. As a final blow bronchitis developed in all pens and high mortality resulted. The following table is given to show the results of this unhappy trial.

TRIAL IV

A Comparison of Various Light Colors on Egg Production (88 Manipulated-Lehigh pullets per pen)

	Production per pen	Mortality per pen
Pen 7—Daylight plus blue light	62.6	30.1%
Pen 8—Daylight plus green light	66.4	28.0
Pen 9—Daylight plus red light	67.6	28.0
Pen 10—Daylight alone	51.2	30.4

THIS table is reduced in detail because it is not believed to be very significant and I shall not discuss it in detail. It neither confirms Trial III or in any way discredits it. The difference in production between the colors is not significant. It is unfortunate that no white light pen could be included in this trial.

In conclusion, let me warn you that these experiments are reported merely to satisfy intellectual curiosity. They do not today point to any radical changes in the use of artificial illumination. I am convinced from these trials that the feed consumed at night is not a factor. On the other hand, there is no advantage to the practical poultryman in changing the feed at night. The same is true of the drink.

The trials with colored lights I believe indicate that red light is somewhat more stimulating than green, blue or white. We plan to continue this phase of the study. Like all new discoveries, this small beginning throws the whole question open for further investigation. I could list a number of trials that must be made before we have the final answer. I am not inclined here to speculate regarding the significance of this work. I merely promise to keep plugging away at the problem and to report if progress is made.

Breeding Program

(Continued from page 5)

results almost immediately. The red, white and blue bands serve as constant reminders to study the actions and give us opportunity for flock improvement.

Throughout the spring and summer months we frequently find birds staying on the nests at night and insisting that they follow the instincts of nature and sit on their eggs. We call this "going broody" and breeders have found that this is a definite character and is not associated with high egg production. At the U. S. Department of Agriculture Experiment Farm, Beltsville, Maryland, it was found that in White Leghorns the non-broody birds averaged 41 eggs more per bird than those which went broody and with the Rhode Island Reds the non-broody birds laid 25 more eggs than those which went broody one or more times. We have no place for broody birds in a breeding program, so whenever a bird goes broody place a black celluloid band on her leg. If she is the proud possessor of a red or white or blue band these should promptly be removed. We use a black band for mourning so if a bird goes broody a second time she should be marked to sell to the butcher when culling takes place, for this is the surest way to eliminate broodiness. Sitting hens should be broken up promptly by shutting them in a broody coop, preferably

WORMS WERE ROBBING THEM

Worm Your Flock—1c per Bird or Less

• When purchasing, insist on the genuine, insoluble Gizzard Capsule and increase your egg production like Mary. The patented INSOLUBLE coating of The Gizzard Capsule prevents any absorption of medicine through crop or stomach—makes worming safer. Also, it is SURE to carry the full dose of medicines to the worms without loss or dilution. Insist on The Gizzard Capsule.

GEO. H. LEE CO., 170 Lee Bldg., Omaha, Nebr.

Pullet Size—
birds 1-3 lbs., 50 caps 1.00
100 caps 4.00
500 caps 8.50
1000 caps 15.00

Adult Size—
50 caps .75
100 caps 1.25
500 caps 5.50
1000 10.00

Increase Winter Egg Yield New 300 Candle Power White Light

Every poultryman knows longer working days for hens means more eggs. Here's a wonder invention—a handy, safe lantern—lamp—just light hen house night and morning. Soft, brilliant white light—like daylight. The advantages of electricity at 1-10 the cost.

Burns 96% air—only 4% fuel
—gasoline or kerosene. Gives 20 times brighter light than wick lantern on half the fuel. No fuss, no muss, no odor, no danger. Lights with match—simple, easy to operate. Most practical poultry-house light.

Home Trial—30 Days at our expense. Pays for itself in 10 weeks or less. Send for literature, introductory offer and big descriptive catalog giving details poultry lack FREE. Send your name today—no obligation.

THE AKRON LAMP COMPANY
310 Lamp Bldg., Akron, Ohio

Agents—Make Big Money
Write me quickly. No experience or capital required. Outfit Free to workers. Exclusive territory. Big Season Address me personally say "Send Agent's Free Outfit Offer." C. E. Stess, Pres.

Write for Special Offer Today

GETS 86% EGG PRODUCTION FROM 6 MONTH OLD PULLETS!

"I AM getting 86% egg production from pullets only six months old," writes an Indiana poultryman who feeds his birds yeast. "Through the winter I always get 75% so I am not taking a chance and not using yeast." Nor are any of the hundreds of other poultry raisers who have tried feeding mash fermented with Animal-Poultry Yeast Foam. "I have never seen anything like the way my yeast-fed hens lay and lay and keep on laying," writes one (Mich.). "My two year old hens are laying 65%," says another (Pa.). "Our hens are producing a larger and heavier egg since we put them on yeast," writes a third (N. Y.). Try fermenting your regular mash with

Animal-Poultry Yeast Foam this fall and see how it gives you more eggs, heavier eggs, a longer laying season, healthier and more vigorous birds. It's a simple, easy, proved way to boost egg production just when prices are highest!

4-lb. box of Animal-Poultry Yeast Foam, enough for 300 lbs. of mash only \$1 at your dealer's. Or sent anywhere in U. S. A. on receipt of check or money order.

Write for free copy of new book, "Profitable Feeding Methods," which tells many other advantages of yeast feeding. Northwestern Yeast Co., Dept. E, 1750 N. Ashland Ave., Chicago.

Poultry Health

By DR. J. E. SALSUR
Veterinarian and Special-
ist in Poultry Diseases

OCTOBER Like every other poultry raiser, you are now looking forward to making some real money due to higher egg prices. For that reason, you should take no chances on worms reducing the egg production of your flock. You will want to be sure of putting your hens in a healthy, vigorous condition, so that they will lay heavily and steadily.

Worming Absolutely Necessary

To do this, poultry raiser experience shows that worming is an absolute necessity, even though you have raised your chickens under almost ideal conditions. Worms

birds are constantly being robbed of the food needed for egg production. They also become so badly run down that they weakly resist and are unable to resist, thus, leucitis, low egg, cholera, typhoid, etc. So, between light production, frequent outbreaks of disease and perhaps a high death loss, there is little chance of making money on a flock that has not been wormed.

Use Correct Preparations

The most important factor about worming is the use of the correct preparation. Make sure the preparation, for which great claims are usually made, is one that is not expensive, because of their failure to do a thorough job. A correct and scientific treatment is the element in the long run. This is why it will pay you to investigate Dr. Salsbury's line of Worm Expellers.

For the elimination of round worms, government authorities mentioned Nicotene as the most effective drug, and Kansas as most effective in removing tape worms. Dr. Salsbury's line of Worm Expellers provide these proved drugs in the scientifically correct amounts, and the cups are properly coated to preserve the strength of the ingredients.

Make sure of doing a thorough worming job, this year, by going to see your local Dr. Salsbury dealer. He has the complete Dr. Salsbury line of cups in stock and will be glad to advise you what cups to use. Note the low price below. At the same time you get your worming job, you can really economize your line expenses. Round and Cold with Dr. Salsbury's Mixed Basterin. These diseases interfere so seriously with egg production that it will pay you to prevent them now.

Ask for the above mentioned preparation by name at your local chick hatchery, feed store, poultry supply, or general store. Dr. Salsbury's Chick Size Worm Expeller, 25¢ per 100; Adult Size, 50¢ per 100; Adult Size, 50¢ per 100. Larger quantities at exclusive prices. Dr. Salsbury's Mixed Basterin, 50¢ per bottle, \$1.00. Dr. Salsbury's Cold-Expeller, 50¢ per bottle, \$1.00.

Colds in Poultry Quickly Stopped

Wheezing, Rattling, Choking, Ends, Trouble Conquered in 48 Hours

Readers with colds in their flocks should read this letter from Thomas Pulliam, Shively, Ky. He says:

"I have had birds with their eyes closed from colds, and have saved them all. One cockerel was nearly dead. He lost 5 pounds. I gave him Group-Over and in two weeks he was full of pep and fighting every rooster on the place. Why do people let their birds die? It's so easy to save them with Group-Over."

It is amazing how quickly Group-Over ends colds in poultry. A few drops in the nostrils usually banishes every symptom over-night—while a little in the drinking water, as a preventive, guards the whole flock. For a liberal supply, send 50¢ (or \$1 for the extra large size) to Burrell-Dugger Co., 703 Postal Station Bldg., Indianapolis, Ind. As Group-Over is guaranteed to do the work or money refunded, it costs nothing to try.

NOT A
POISON



RESULTS
GUARANTEED

with a wire or slatted floor, and feeding them generously on moist egg-laying mash.

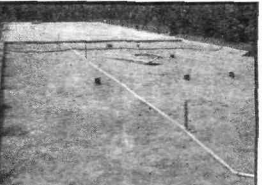
Systematic and regular adoption of breeding fundamentals such as early maturity, intensity and persistency of production will bring the offspring of a mediocre flock up to high levels of egg production. Such a selection and banding program has its limitations, but it is quite practical for farm flock conditions.

Water System Is Investment In Pride, Health And Safety

Electric water systems which maintain a constant pressure will be one of the best investments on farms which have electricity available. It is one piece of equipment which will be used every day in the year, while much of the other equipment on a farm is used only a few days out of the entire year.

Having running water available in the home and at other points on the farm, makes a property considerably more valuable and increases the joy and pride of living in it. A farmwife who has both electricity and running water available does not need to envy her city sister in any respect, as far as the modern home is concerned.

An additional advantage of having water pressure available on the farm is in decreasing the fire hazard. The proper kind of water system installation will reduce fire insurance rates and may be extremely helpful in combating any fires which might occur.



(Left) Experimental Farm Photo

In constructing a new poultry house the water pipes should be laid in the concrete.

The farmer who has an electric water system usually secures water at a much lower cost than the average city dweller. The average cost per 1,000 gallons of water in 1,000 American cities is 37.2 cents, while home water systems will pump 1,000 gallons for around 10 to 12 cents, and even less in some instances.

It will be well worth while to investigate the various types and sizes of water systems available for use on the farm.

Spare Time Work Offers Opportunity For Profit

Practically everyone would like to add to the personal income by some means, and everyone has more or less spare time which can be devoted to work which is known to be profitable.

There are certain days and seasons of the year when work on a farm is slack, and time could be devoted to a profitable sideline. A good many men have taken advantage of their spare time to sell some product which is needed by their neighbors, and which returns the salesman a fair profit.

One such product is that of trees and shrubs. In a great many sections, farmers have neglected orchards until there is an excellent opportunity to sell new plantings of fruit trees, and at the same time, sell ornamental shrubs and trees.

That this work can be made really profitable in spare time is shown by the results attained by various men who have tried it. An Alabama man decided to "use his spare time" in this way, and although he did not begin until he was 40, he has since sent in good sized orders regularly, earning good commissions and additional premiums. On two orders sent in five days apart, he earned the lump sum of \$102.73.

A Tennessee man who can devote only his spare time to selling nursery stock recently

More VITAMIN D per \$1 USE SARDILENE

Keeps Your Birds Living and Laying

Birds must have adequate Vitamin "D" for profitable production. Buy your "D" where you get the most per dollar. Use Sardilene! The original sardine oil produced in America. It has proved its reliability. Tested rigorously by Colleges, Experiment Stations, large food manufacturers and commercial poultrymen. Sardilene does the work—costs less.

Sardilene Also High In Vitamin "A"

Sardilene carries ample amounts of Vitamin "A". Tests show Sardilene outstanding in producing growth and condition. Improves feathering and pigmentation.

Selected—Refined—Proved

Sardilene is selected sardine oil refined under the exclusive Booth process. All Sardilene is biologically tested on chicks and proven on basis of 4% of 1% of the 12-week Wisconsin Ration. Ask your dealer for Sardilene.

Write for full information and literature.

F. E. Booth Company, Inc.

1111 Market St., San Francisco, Calif.

Dept. G, Farley Bldg., Cleveland, Ohio.

THE WORLD'S LARGEST SARDINE PACKERS

BROWER'S EGG SCALE \$1.95 POSTPAID



New Leveling Feature

BROWER MFG. CO.

Dept. 3612, Quincy, Illinois

ALARMS and BROODERS

Most complete line of electric poultry supplies in U. S. Heating outfits for incubators, brooders & waterers. Fly Killers, etc. FREE catalog and valuable data.

LYON ELECTRIC CO.

Dept. E. Box 1436, San Diego, Calif.

Colonial FALL and WINTER Chix

All leading straight breeds; also sex guaranteed chicks. World's largest chick producers. Send NOW for big FREE catalog of REAL BARGAINS.

COLONIAL POULTRY FARMS, Box 410, PLEASANT HILL, MO., or BOX 410, FLORENCE, COLO.

NATIONAL POULTRY BANDS

Lowest prices—greatest variety—merit 80 styles including new, elegant, custom made. Call for big catalog and samples FREE. • Poultry supplies.

NATIONAL BAND & TAG CO.

DEPT. 322 NEWPORT, KENTUCKY

Make Money at Home

Grow Mushrooms in your cellar or attic! Exchange new process. Easy, better than quicker crops. —More money for you! —Enormous new demand! Write for Free Book, American Mushroom Industries, Dept. 794, Toronto, Ont.

BIG MONEY FROGS

TURN YOUR BACKYARD INTO CASH! Illustration book "Frogging for Profit" Call for one. American Frog Raising Co. (135) New Orleans, La.

GROW MUSHROOMS

We show you how to grow mushrooms; plant all seasons; overnight crops. We buy 40% profit; our secret Free net trick. INTERSTATE MUSHROOM INDUSTRIES, NW-7357 Cottage Grove Ave., Chicago, Ill.

Of course, a most important consideration in taking up this work, especially nursery stock, is in finding the quota of a thoroughly reliable company which will cooperate with the salesman and which furnishes satisfactory trees and stock to customers. After a connection with such a company has been established, it is possible to add materially to one's income at this pleasant outdoor work. Any Poultry Tribune subscriber who is interested in this type of work is welcome to write the Service Department.—Poultry Tribune, Mount Morris, Illinois, for help in making a connection with a suitable company.

A chicken loses about 10 per cent of its live weight in picking and bleeding.

A chicken loses about 10 per cent of its live weight in picking and bleeding.

The breed is valued principally for exhibition purposes, although the birds are non-sitting and quite good producers of white shelled eggs. Their skin color is white.

white.

Before You Buy Fencing

Catalog Shows Over 200 styles

It will pay you big to send for my New Catalog of Bargains because:

Jim Brown's Freight Paid Factory 60 Prices Save You Big Money.

Jim Brown's Fence is made of Copper-Steel; Lasts Much Longer.

Bargains in Steel Posts, Gates, Barb Wire, Roofing, Paint, Harness, Poultry Supplies, Poultry Netting, Baby Chicks and Hundreds of Farm and Home Needs.

Why Not Save Money — Buy Direct From Jim Brown

I guarantee the quality and low cost of my products.

Service. I pay the freight. Send for free catalog to my factory nearest you — Jim Brown.



Jim Brown's Bargain Book

THE BROWN FENCE & WIRE CO., Dept. 1363-A, Cleveland, O., Memphis, Tenn.



Fowl Pox

Vaccine

Bederle

(Prepared from Chicken Pox Virus)

For use on birds two to four months old either by the follicle or "stick" method. A complete and permanent protection assured.

Also Poultry Worm Tablets Bederle.

Ask for free booklets

LEDLER LABORATORIES INC.
 511 Fifth Avenue New York

THE NEW MASCOT



Still the best
egg-grading
scale.

New in design.
Best in quality.

Retail for
\$1.95 paid.

Don't Delay—Order Today

BAILOUT	THRU	2 MONTHS	3 MONTHS	6 MONTHS	1 YEAR
2500-2599	\$2.00	\$2.00	\$2.00	\$2.00	\$2.00
2600-2699	\$2.00	\$2.00	\$2.00	\$2.00	\$2.00
2700-2799	\$2.00	\$2.00	\$2.00	\$2.00	\$2.00
2800-2899	\$2.00	\$2.00	\$2.00	\$2.00	\$2.00
2900-2999	\$2.00	\$2.00	\$2.00	\$2.00	\$2.00
3000-3099	\$2.00	\$2.00	\$2.00	\$2.00	\$2.00
3100-3199	\$2.00	\$2.00	\$2.00	\$2.00	\$2.00
3200-3299	\$2.00	\$2.00	\$2.00	\$2.00	\$2.00
3300-3399	\$2.00	\$2.00	\$2.00	\$2.00	\$2.00
3400-3499	\$2.00	\$2.00	\$2.00	\$2.00	\$2.00
3500-3599	\$2.00	\$2.00	\$2.00	\$2.00	\$2.00
3600-3699	\$2.00	\$2.00	\$2.00	\$2.00	\$2.00
3700-3799	\$2.00	\$2.00	\$2.00	\$2.00	\$2.00
3800-3899	\$2.00	\$2.00	\$2.00	\$2.00	\$2.00
3900-3999	\$2.00	\$2.00	\$2.00	\$2.00	\$2.00
4000-4099	\$2.00	\$2.00	\$2.00	\$2.00	\$2.00
4100-4199	\$2.00	\$2.00	\$2.00	\$2.00	\$2.00
4200-4299	\$2.00	\$2.00	\$2.00	\$2.00	\$2.00
4300-4399	\$2.00	\$2.00	\$2.00	\$2.00	\$2.00
4400-4499	\$2.00	\$2.00	\$2.00	\$2.00	\$2.00
4500-4599	\$2.00	\$2.00	\$2.00	\$2.00	\$2.00
4600-4699	\$2.00	\$2.00	\$2.00	\$2.00	\$2.00
4700-4799	\$2.00	\$2.00	\$2.00	\$2.00	\$2.00
4800-4899	\$2.00	\$2.00	\$2.00	\$2.00	\$2.00
4900-4999	\$2.00	\$2.00	\$2.00	\$2.00	\$2.00
5000-5099	\$2.00	\$2.00	\$2.00	\$2.00	\$2.00
5100-5199	\$2.00	\$2.00	\$2.00	\$2.00	\$2.00
5200-5299	\$2.00	\$2.00	\$2.00	\$2.00	\$2.00
5300-5399	\$2.00	\$2.00	\$2.00	\$2.00	\$2.00
5400-5499	\$2.00	\$2.00	\$2.00	\$2.00	\$2.00
5500-5599	\$2.00	\$2.00	\$2.00	\$2.00	\$2.00
5600-5699	\$2.00	\$2.00	\$2.00	\$2.00	\$2.00
5700-5799	\$2.00	\$2.00	\$2.00	\$2.00	\$2.00
5800-5899	\$2.00	\$2.00	\$2.00	\$2.00	\$2.00
5900-5999	\$2.00	\$2.00	\$2.00	\$2.00	\$2.00
6000-6099	\$2.00	\$2.00	\$2.00	\$2.00	\$2.00
6100-6199	\$2.00	\$2.00	\$2.00	\$2.00	\$2.00
6200-6299	\$2.00	\$2.00	\$2.00	\$2.00	\$2.00
6300-6399	\$2.00	\$2.00	\$2.00	\$2.00	\$2.00
6400-6499	\$2.00	\$2.00	\$2.00	\$2.00	\$2.00
6500-6599	\$2.00	\$2.00	\$2.00	\$2.00	\$2.00
6600-6699	\$2.00	\$2.00	\$2.00	\$2.00	\$2.00
6700-6799	\$2.00	\$2.00	\$2.00	\$2.00	\$2.00
6800-6899	\$2.00	\$2.00	\$2.00	\$2.00	\$2.00
6900-6999	\$2.00	\$2.00	\$2.00	\$2.00	\$2.00
7000-7099	\$2.00	\$2.00	\$2.00	\$2.00	\$2.00
7100-7199	\$2.00	\$2.00	\$2.00	\$2.00	\$2.00
7200-7299	\$2.00	\$2.00	\$2.00	\$2.00	\$2.00
7300-7399	\$2.00	\$2.00	\$2.00	\$2.00	\$2.00
7400-7499	\$2.00	\$2.00	\$2.00	\$2.00	\$2.00
7500-7599	\$2.00	\$2.00	\$2.00	\$2.00	\$2.00
7600-7699	\$2.00	\$2.00	\$2.00	\$2.00	\$2.00
7700-7799	\$2.00	\$2.00	\$2.00	\$2.00	

Breeders/ Big Money in Baby Chicks

"I have shown thousands HOW TO MAKE MONEY WITH CHICKS. Let me help you get the right start. Write me once or send coupon." *George Cugley.*

Right now is the time to go into the Baby Chick business—biggest money-making branch of the whole poultry industry. Expected meat shortage will make 1936 big year for hatchery of quality chicks. Turn your quality eggs into quality chicks for big, quick profits!

Small Investment! Easy Terms!

Quick Profits!
You don't need a lot of money. The "Lower" fair-price policy has opened the eyes of breeders and hatcherymen everywhere. For the first time you can get a fine modern mammoth incubator at a reasonable price—little more than half that of ordinary incubators. The "Lower" is made in two sizes—4,200 and 10,560 egg sizes. Easy terms. Write today for full information. Don't miss one of the biggest money-making opportunities of a generation.

LOWER INCUBATOR CORP.,
White Pigeon, Mich.

Mail this coupon today!

LOWER INCUBATOR CO.,
White Pigeon, Mich. Tell me how to make money with Baby Chicks as advertised in Poultry Tribune. Send description, prices and terms on your two sizes of mammoth incubators.

Name _____
Address _____

USED 6 YEARS at Alabama Egg Laying Contest



Prof. G. A. Trollope, Head of the Poultry Husbandry Dept. at Alabama Polytechnic Institute writes from 6 years' experience.

Prof. Trollope says, "... poultry raisers measure results by growth, egg production and mortality. In our opinion Iodine Vermicide Merck is one of the most practical and satisfactory products for the control of intestinal parasites of poultry." Write for a copy of "Facts About Iodine"

MERCK & CO. INC.
Manufacturing Chemists, RAHWAY, N. J.

IODINE VERMICIDE
MERCK

ILCO POULTRY EQUIPMENT

"the Best for Less—Always"
For superior value in materials, workmanship, service, ILCO equipment is unbeatable. A typical unguaranteed value is this: a set of 4 gal. ILCO valve and float, heated **\$6.35**

Fontaine, complete with stand, only **\$10.00**
Stop Winter Egg Slumps
ILCO Hot Water Heating Systems insure warmth for winter egg production. Broad safety for hen-moody. Systems for every purpose designed in modern FLEET Heating Manual.

BANDS Every style and size made in our own shop. Possible clutch band models, 100, 750, 800, 1,000, 400. Specialty breeds and numbers. Send for complete list. **ILLINOIS SUPPLY CO.**
Dept. 42, AURORA, ILL.

Bos Quality Pullets

Several thousand healthy, well-developed pullets, ready for shipment. 18 wks. to ready to lay age. A. C. Special Egg, White Leghorns & C. White Leghorns. Also Vealite Breeds. All from blood tested stock. C.O.D. on approval. Low prices. 180% the arrival. Catalogue free. **BOS HATCHERY, R. 2P, ZEELAND, MICH.**

The Grab Bag

This month the editor has picked from among the free booklets offered by advertisers and from the new "Grab Bag," those which he feels are of most interest and help. Want any of them? Send a penny postal card to the address given here when the booklet or booklet is free. The booklet or booklets listed will then come direct to your home. Do not send requests for any of these booklets to Poultry Tribune. You must write direct to the address listed.

● **Tips to Trappers** for 1934-35 is a new 32-page booklet filled with valuable, helpful information for trappers, fur ranchers and rabbit raisers. Issued by Sears, Roebuck and Co., and edited by Johnny Muskies, it contains many brand new features and money-making tips such as: successful trapping methods used by others to catch more furs, entertaining trapline tales, interesting letters and photos, hints on how to skin, stretch and dry pelts for highest prices. Tells how and where to market your furs for a square deal and full value returns. Gives full details on the 6th National Fur Show and how you may share in its 384 cash awards plus special Plymouth Automobile awards for careful pelt preparation. Lists those who earned awards last season. Your friends' names are probably included! Write for free copy of "Tips to Trappers." Address: Sears, Roebuck and Co., Dept. 72P241, Chicago, Ill.

● **Big Price Catalog**—describing famous Ilco Feeders, Waterers, Nests and poultry equipment under \$200—free upon request. You can increase your winter egg profits by heating your laying house and installing ultra-violet ray lighting equipment described in catalog "The Ilco Heating Service for Poultrymen" and pamphlet "Ultra-Violet and Its Benefits to the Practical Poultryman." Both free! Address: Illinois Supply Co., Dept. 42A, Aurora, Ill.

● **Fifteen Ways to Boost Egg Income** is the title of a new booklet which has just been prepared for poultry raisers now. Contains valuable feeding and marketing information. Free. Address: National Oil Products Co., Inc., 2521 Essex St., Harrison, N.J.

● **Cups For Poultry Show Awards** are described in an interesting new catalog which has just been prepared for the fall season. Every poultry show secretary will want this catalog. Free. Address: Spitz Bros., Inc., 27 E. Monroe St., Chicago, Ill.

● **Make \$200 a Month During Spare Time** by selling fruit trees, shrubs and roses for reputable nursery. This is something which should appeal to quite a number of poultry raisers. Address: Box S.H.3290, Stark Bros. Nurseries, Louisiana, Mo.

● **A big, national company is seeking more men** to take charge of paying tea and coffee routes. Ford Tudor sedans are given to good producers. Send a postal card for free facts on this opportunity. Address: Albert Miller, Route Mgr., 3214 Monmouth Ave., Cincinnati, Ohio.

● **Building Greater Farm Profits** is a new booklet which explains the principles of poultry house use. Tells how to keep the house warmer and how feed costs can be reduced materially. Explains in detail how to use the insulation board. Free. Address: The Insulate Co., 1021, Builders Exchange Bldg., Minneapolis, Minn.

● **Plan for Three Years of Egg Production** is the title of a new booklet which points out that it is unnecessary to lose one out of every five laying pullets. This booklet describes a practical feeding system and gives helpful advice on managing the pullets for a longer life. Free. Address: Pratt Food Co., Dept. 605, Philadelphia, Pa.

● **Fold-Dep for Laying Hens** is a new 32-page booklet which contains the very latest information on poultry feeding. It stresses feeding for livability, layers, profitable egg production, and contains many valuable feeding tips. Free. Address: Quaker Oats Co., Dept. 2, 141 W. Jackson St., Chicago, Ill.

● **Building Suggestions for the Use of Harsco** are contained in a new 16-page illustrated booklet. This all-wood booklet, hard, smooth and brown in color is used in home construction for remodeling and in poultry and general farm buildings. Free. Address: Harsco-Mantle Corp., 22 1/2 W. 42nd St., New York, N.Y.

● **Wood Catalog in Livestock and Poultry Feeding** is a new leaflet which explains in answer to 18 questions just how charcoal fits into the poultry nutrition picture. This is a new study booklet. Free. Address: Wood-Charcoal Research Bureau, Dept. B, P. O. Box 389, Jacksonville, Fla.

● **New Discovery in Fence Manufacture** makes the life of this manufacturer last twice as long. This is an exclusive new process. Free. Address: Continental Steel Corp., Dept. P.T., Kokomo, Ind.

● **"Simplified Ratons for Farm Chickens"** gives poultry raisers the experiments with different ration in Alabama. It is Circular 66. Address: Alabama Polytechnic Institute, Auburn, Ala. Send five cents.

Vaccinate NOW for ROUP—POX CHOLERA—TYPHOID PROTECTION

Look at
These Low Prices

Fourteen years supplying poultrymen with bacterins and vaccines proves that Fidelity keeps faith—supplying the best obtainable—at the very lowest possible cost. Fidelity Bacterins and Vaccines are all made under U. S. Veterinary License.

AVIAN MIXED BACTERIN

for the prevention and treatment of Colds, Roup; secondary infections accompanying Diptheria, Canker, Cholera, Catarrh, etc.
60 doses \$1.00 250 doses \$2.50
125 doses 1.50 500 doses 4.00

POWL POX VACCINE

For the prevention of Chicken Pox and Canker. Specify your choice of vaccine made from chicken or pigeon strain.

100 doses \$1.00 500 doses \$4.00

CHOLERA-TYPHOID BACTERIN

For the prevention and treatment of Fowl Cholera and Fowl Typhoid,
60 doses \$1.50, 250 doses \$4.00, 500 doses \$6.50

STAINED ANTIGEN

For the rapid diagnosis of B. W. D.
100 tests \$1.00 500 tests \$4.00

FIDELITY SPECIAL SYRINGE

(Not required for antigen or virus vaccine)

For administering Avian Bacterin. Glass barrel, 2 needles. Don't confuse this syringe with ordinary cheap ones. High grade in every respect. Now only 75c.

FREE choice of one 60c package Fidelity White Diarrhea Tablets or bottle Disinfectant.

ORDER NOW—before your flocks become infected and heavy losses occur. All prices prepaid. Write for free booklet on poultry diseases.

FIDELITY LABORATORIES, Inc.

814 EXCHANGE AVE. CHICAGO, ILL.

30c Gallon Lice and Mite Spray Equals \$6 Gallon Roost Paint

A simple, efficient exterminator, applied with a hand sprayer to walls, roosts, drooping boards and nests. It is triple in action—kills lice and red mites almost instantly. Kills chickens free of lice and mites at the same time. Equal it not superior to any high priced roost paint, sprays, dips, etc. No handling of birds—in other exterminator needed.

I have tried nothing else for 4 years. Save time, money and worry. Not necessary to make frequent applications. I can handle my birds as much as I wish without fear of getting live on myself even though I neglect spraying for several months.

Save yourself from insecticides that cost about 20c a gallon. Figure for yourself what you save. Not a crank case oil company.

Send \$3 TODAY by money order or draft for my new mail. You'll say it is the most profitable dollar you ever spend. It will save you plenty of time and money.

J. A. BOSSUNG Route 9 Lafayette, Ind.

HOMASOTE

INSULATING AND SHEATHING BOARD

Protects against cold, wind and dampness.

FREE PLANS — Laying House, Brooder House, Special Houses for Battery Plants, also many other plans to try today.

THE AGASOTE MILLBOARD Co.

Dept. F Trenton, New Jersey

CLASSIFIED ADVERTISEMENTS

Classified Ad Rates (Cash with Order)

1 Month25 a word
2 Months45 a word
3 Months75 a word
4 Months85 a word
5 Months1.00 a word
Minimum	—10 Words

We employ no solicitors or collectors for classified ads. Send your copy and remittance to our office, Poultry Tribune, Mount Morris, Ill.

FILL THIS PLEASE:

Your count of ad. _____ Words
Figures and Initial count as words

Number times to run _____

Amount enclosed \$ _____

What heading shall we insert it under? _____

Write copy on this order blank, plainly, to insure correctness. Initials and figures count as words. Make a careful count, and remit in full for the time at is to run, thus avoiding delay in publishing. Please state heading or classification under which ad is to run. Illustrated Classified Ads are charged at a special rate, each insertion, cuts to be furnished by advertiser. Kindly send two references, a banker and a business acquaintance. By sending their letters with your copy, you will save delay in inserting your ad. In changing or renewing your ad state under what heading it is inserted.

TO INSURE INSERTION IN OUR NOVEMBER ISSUE, COPY MUST REACH US BY OCTOBER 10
WRITE YOUR ADVERTISEMENT HERE
AND MAIL TO POULTRY TRIBUNE, CLASSIFIED AD DEPARTMENT, MOUNT MORRIS, ILLINOIS

ANCONA

PRODUCTION bred Ancona cockerels—25.50. Mrs. J. J. Horman, Jacksonville, Wisconsin.

ARE YOU a reader of the Ancona World Magazine? Only journal published devoted entirely to the Ancona. For a full and complete list of the Ancona, write to the Editor, Poultry Tribune, Mount Morris, Minnesota.

SPECIAL list on Ancona cockerels now from State Fair winners. Ralph Harvey, Newburg, Iowa.

AUSTRALORPS

RANGE raised cockerels, 83 egg blood line—41.50 and up. Lamer Poultry Farm, Lodi, Kansas.

AUSTRALORP headquarters. Importers official world champion 300-361 egg hens. Cockerels, pullets, chicks, eggs. Prices reasonable. Osborne Farm, Iola, Kansas.

BABY CHICKS

CLOVER Valley chicks. The best you can buy. Always dependable. Clover Valley Poultry Farm, Box 41, Ramsey, Indiana.

ROCKS, Reds, Oringtons, Wyandottes, White, Brown, Buff Leghorns. Also hybrid day old pullets, cockerels. Hatching every Monday. Priced right. Wayne Hatchery, Wayne City, Illinois.

EDGEVIEW chicks. Leading broilers. January hatched, price right. Eckert's Hatchery, Peosine, Illinois.

WHITE Starling hatch, 7 to 8, Ramsey, Indiana, for special baby chick offer.

LOOK! Baby chicks. Finest quality. Every week all year. Buy now for profitable broilers and layers. Price right. Caring free. Nabot Hatchery, Box 37, Gander, Ohio.

ILLINOIS State accredited. Antigen blood-tested chicks; baby pullets and cockerels. Lateral, full prices. 18 popular breeds. Heavy assorted—\$6.30 per 100. Low Elm Hatchery, Nokomis, Illinois.

C. O. D. ROCKS, Red, Wyandottes, Brown, White Leghorns. Anconas, heavy hatched—\$6.95 per hundred plus postage. Immediate shipments. Mt. Healthy Hatcheries, Mt. Healthy, Ohio.

HIGH-GRADE better chicks. 10 breeds every week. Glendale, Box 21, Milltown, Illinois.

MOTHER BIRCH baby pullet chicks, colored chicks. Monthly. Money. Best breeds—\$6.99 up. C. O. D. Free return. Bush Hatchery, Box 130, Clinton, Mo.

DETROIT County chicks. New Hampshire Reds, Barred, Buff, White Rocks, White, Silver, Lang, Wyandottes, Buff Oringtons, Rhode Island Reds—\$7.40. Black, White Glades—\$9.00. Buff White Minors, White Rhode Islands—\$7.40. White Leghorns, Anconas—\$6.50. Heavy mixed—\$6.20. Prepared. 100 Roan County Hatchery, Box 54, Huntington, Indiana.

BABY chicks for broilers. We can make prompt shipment of following breeds: Barred, Buff, White Rocks, White Wyandottes, Reds, 47-49; New Hampshire Reds—\$7.85; White Glades—\$8.45; Black White Leghorns—\$6.95; heavy mixed—\$6.50. We pay large and guaranteed chicks for 14 days. All chicks hatched in new electric Smith incubators. Davis Poultry Farm, Route 4, Ramsey, Indiana.

13:

words in Poultry Tribune's classified ad section only cost \$3.25. Where else can you reach 400,000 poultry prospects for so little?—Class. Ad. Jim.

SALEM'S quality chicks, hatched in 25.50. Mrs. J. J. Horman, Jacksonville, Wisconsin. Write for our new low prices, please free. Salem Hatchery and Poultry Farm, Box 45, Bain, Indiana.

JOUTH'S famous chicks. Leading varieties at attractive prices. Prompt service. Special discounts on 1000 orders booked now. Free catalog. Booth Farms, Box 38, Clinton, Missouri.

BANTAMS

BANTAMS—53 years. F. C. Wilber, Grand Rapids, Michigan. COCHINS, Selfridges, Barred Rocks, White Silvers, Blue Tail Janettes, John Tombs, Dakota, Illinois.

LANTAS. White Polish, Golden Selfridges, White Bantams, Annie Kinter, Indianapolis.

STAMP brings fifty variety catalog. Twelve assorted eggs—\$1.00. Fielder Fowl Farm, Gainesville, Texas.

ALL BREEDS of Cochins. A. Kuchner, Galesburg, Illinois.

BRAMAS—LIGHT

HANKINS' famous Light Brahmas. Pullets, cockerels, old stock. Free catalog. W. H. Hatching, Strafford, Missouri.

CORNISH—DARK

EXHIBITION Dark Cornish. Frank K. Willis, 242 E. Barnett, Louisville, Ky.

DUCKS

QUALITY Buff Oringtons and Khaki Campbell ducks—\$2.75 per trio. William McElroy, New York.

GAMES—PIT

FIGHTING COCKS. Young 1934 trio \$10.00. Circular free. S. M. White, Kearsville, Mo.

GESE

TOLULOCK English Geese—Breeder's. Muntje B. Nash, Van Wert, Ohio.

GIANTS

Black and White Giant cockerels. Leading strains. H. C. Schaeffer, Neoga, Ohio.

JERSEY WHITE GIANT

BUT NEXT year's chicks. Now. Buy money, big discounts. Highest quality Jersey White Giants. Raised in America and purchased tested U.S. raised Giant White and Black Permit 157. Satisfaction guaranteed. day-old pullets. Beautiful young growing cockerels, pullets, day-old cockerels. day-old pullets. Order Certificate 2007. Descriptive literature. The Maple, Box 1820, Pittsfield, Illinois.

PULLETS, cockerels, White Giants, Black Glades, Lakelanders, Buff Minors, Thomas Farm, Pleasanton, Kansas.

LAMONA

LAMONA pullets, cockerels, chicks. Best of breed. Price reasonable. Osborne Farm, Holland, Michigan.

LEGHORNS—BROWN

BROWN and White Leghorns (both males) Australia, Barred Rocks, Quills, Evans Poultry, Gallipoli, Ohio.

LEGHORNS—S. C. WHITE

BARON White Leghorn pullets three and four month old. Price reasonable. 20th Century Hatchery, New Washington, Ohio.

PULLETS, home-grown up, hatching in production level. Royal Leghorns. Live delivery guaranteed. Mating list free. Lemmer's Leghorns, Box 10, Holland, Michigan.

R.O.P. PEDIGREE Barred and White Buck cockerels. Pincroft Poultry Farm, Osceola, Michigan.

PULLETS, Barren White Leghorns 4 and 5 month old. Bishop Poultry Farm, New Washington, Ohio.

WHITE Leghorns, pure Single Comb White Leghorns, cockerels, pure Tom Cochins 30 ounce egg strain for sale. 1000 brood flocks over offered. Big, true Tom Horn White Leghorns. Flock averages up to 225 eggs. Also 5.

PULLETS, Yearling hens. Highest brood flocks over offered. Big, true Tom Horn White Leghorns. Flock averages up to 225 eggs. Also 5.

PULLETS, Yearling hens. Highest brood flocks over offered. Big, true Tom Horn White Leghorns. Flock averages up to 225 eggs. Also 5.

PULLETS, Yearling hens. Highest brood flocks over offered. Big, true Tom Horn White Leghorns. Flock averages up to 225 eggs. Also 5.

PULLETS, Yearling hens. Highest brood flocks over offered. Big, true Tom Horn White Leghorns. Flock averages up to 225 eggs. Also 5.

PULLETS, Yearling hens. Highest brood flocks over offered. Big, true Tom Horn White Leghorns. Flock averages up to 225 eggs. Also 5.

PULLETS, Yearling hens. Highest brood flocks over offered. Big, true Tom Horn White Leghorns. Flock averages up to 225 eggs. Also 5.

PULLETS, Yearling hens. Highest brood flocks over offered. Big, true Tom Horn White Leghorns. Flock averages up to 225 eggs. Also 5.

PULLETS, Yearling hens. Highest brood flocks over offered. Big, true Tom Horn White Leghorns. Flock averages up to 225 eggs. Also 5.

PULLETS, Yearling hens. Highest brood flocks over offered. Big, true Tom Horn White Leghorns. Flock averages up to 225 eggs. Also 5.

PULLETS, Yearling hens. Highest brood flocks over offered. Big, true Tom Horn White Leghorns. Flock averages up to 225 eggs. Also 5.

PULLETS, Yearling hens. Highest brood flocks over offered. Big, true Tom Horn White Leghorns. Flock averages up to 225 eggs. Also 5.

PULLETS, Yearling hens. Highest brood flocks over offered. Big, true Tom Horn White Leghorns. Flock averages up to 225 eggs. Also 5.

PULLETS, Yearling hens. Highest brood flocks over offered. Big, true Tom Horn White Leghorns. Flock averages up to 225 eggs. Also 5.

PULLETS, Yearling hens. Highest brood flocks over offered. Big, true Tom Horn White Leghorns. Flock averages up to 225 eggs. Also 5.

PULLETS, Yearling hens. Highest brood flocks over offered. Big, true Tom Horn White Leghorns. Flock averages up to 225 eggs. Also 5.

PULLETS, Yearling hens. Highest brood flocks over offered. Big, true Tom Horn White Leghorns. Flock averages up to 225 eggs. Also 5.

PULLETS, Yearling hens. Highest brood flocks over offered. Big, true Tom Horn White Leghorns. Flock averages up to 225 eggs. Also 5.

PULLETS, Yearling hens. Highest brood flocks over offered. Big, true Tom Horn White Leghorns. Flock averages up to 225 eggs. Also 5.

PULLETS, Yearling hens. Highest brood flocks over offered. Big, true Tom Horn White Leghorns. Flock averages up to 225 eggs. Also 5.

PULLETS, Yearling hens. Highest brood flocks over offered. Big, true Tom Horn White Leghorns. Flock averages up to 225 eggs. Also 5.

PULLETS, Yearling hens. Highest brood flocks over offered. Big, true Tom Horn White Leghorns. Flock averages up to 225 eggs. Also 5.

PULLETS, Yearling hens. Highest brood flocks over offered. Big, true Tom Horn White Leghorns. Flock averages up to 225 eggs. Also 5.

PULLETS, Yearling hens. Highest brood flocks over offered. Big, true Tom Horn White Leghorns. Flock averages up to 225 eggs. Also 5.

PULLETS, Yearling hens. Highest brood flocks over offered. Big, true Tom Horn White Leghorns. Flock averages up to 225 eggs. Also 5.

PULLETS, Yearling hens. Highest brood flocks over offered. Big, true Tom Horn White Leghorns. Flock averages up to 225 eggs. Also 5.

PULLETS, Yearling hens. Highest brood flocks over offered. Big, true Tom Horn White Leghorns. Flock averages up to 225 eggs. Also 5.

PULLETS, Yearling hens. Highest brood flocks over offered. Big, true Tom Horn White Leghorns. Flock averages up to 225 eggs. Also 5.

TURKEYS—BRONZE

AMERICAN Turkey. Grand Forks, North Dakota, exclusive turkey monthly, one year—\$60, two years—\$100, sample 10.

RAIFACE double adult, 1 Tom, 10 hens—\$30.00; 40 eggs, 4 Tom—\$125.00; 120 egg record. Mary Klink, Huntville, Missouri.

WYANDOTTES—GOLDEN

GOLDEN Wyandotte. Old and young. D. Lower, Route, Ashby, Missouri.

FOX GOLDEN Wyandottes, the world's finest strain, with John W. Faber, Okawville, Illinois.

WYANDOTTES—PAPER

SHOW and utility, eggs and stock. John W. VanLiere, Salem, Wisconsin.

WYANDOTTES—WHITE

MARTIN virgin cockerels—\$3.90 each. Ethel C. Teeter, Geneva, Ind.

COCKERELS

COCKERELS, S.C.W.I. from R.O.P. pedigree and trained, certified matings. March, April and May hatched. Hartwick Hatchery, Inc., Hartwick, New York.

HANSON'S pedigreed cockerels. Special offering from our world famous blood lines for October delivery. 1000 to 1500 eggs—\$30 to \$35 per egg. 1000 to 1500 eggs—\$30 to \$35 per egg. 1000 to 1500 eggs—\$30 to \$35 per egg.

DARK Brown cockerels, 200-210 egg dam—\$2.50. Cedarhurst Poultry Farm, Route 2, Joliet, Arkansas.

PULLETS

HYBRID pullets are healthier, better layers and live longer. Make heavy hens. Better than Leghorns for eggs. Send us your name. We want to tell you about these wonderful birds. Puckin Hatchery, Box 55, Shawnee, Ohio.

PULLETS, yearling hens. Rocks, Reds, Leghorns, also a few color cockerels. Cordes Poultry Farm, Spring Fork, Minnesota.

PULLETS, yearling hens. Rocks, Reds, Leghorns, also a few color cockerels. Cordes Poultry Farm, Spring Fork, Minnesota.

PULLETS, yearling hens. Rocks, Reds, Leghorns, also a few color cockerels. Cordes Poultry Farm, Spring Fork, Minnesota.

PULLETS, yearling hens. Rocks, Reds, Leghorns, also a few color cockerels. Cordes Poultry Farm, Spring Fork, Minnesota.

PULLETS, yearling hens. Rocks, Reds, Leghorns, also a few color cockerels. Cordes Poultry Farm, Spring Fork, Minnesota.

PULLETS, yearling hens. Rocks, Reds, Leghorns, also a few color cockerels. Cordes Poultry Farm, Spring Fork, Minnesota.

PULLETS, yearling hens. Rocks, Reds, Leghorns, also a few color cockerels. Cordes Poultry Farm, Spring Fork, Minnesota.

PULLETS, yearling hens. Rocks, Reds, Leghorns, also a few color cockerels. Cordes Poultry Farm, Spring Fork, Minnesota.

PULLETS, yearling hens. Rocks, Reds, Leghorns, also a few color cockerels. Cordes Poultry Farm, Spring Fork, Minnesota.

PULLETS, yearling hens. Rocks, Reds, Leghorns, also a few color cockerels. Cordes Poultry Farm, Spring Fork, Minnesota.

PULLETS, yearling hens. Rocks, Reds, Leghorns, also a few color cockerels. Cordes Poultry Farm, Spring Fork, Minnesota.

PULLETS, yearling hens. Rocks, Reds, Leghorns, also a few color cockerels. Cordes Poultry Farm, Spring Fork, Minnesota.

PULLETS, yearling hens. Rocks, Reds, Leghorns, also a few color cockerels. Cordes Poultry Farm, Spring Fork, Minnesota.

PULLETS, yearling hens. Rocks, Reds, Leghorns, also a few color cockerels. Cordes Poultry Farm, Spring Fork, Minnesota.

PULLETS, yearling hens. Rocks, Reds, Leghorns, also a few color cockerels. Cordes Poultry Farm, Spring Fork, Minnesota.

PULLETS, yearling hens. Rocks, Reds, Leghorns, also a few color cockerels. Cordes Poultry Farm, Spring Fork, Minnesota.

PULLETS, yearling hens. Rocks, Reds, Leghorns, also a few color cockerels. Cordes Poultry Farm, Spring Fork, Minnesota.

PULLETS, yearling hens. Rocks, Reds, Leghorns, also a few color cockerels. Cordes Poultry Farm, Spring Fork, Minnesota.

PULLETS, yearling hens. Rocks, Reds, Leghorns, also a few color cockerels. Cordes Poultry Farm, Spring Fork, Minnesota.

PULLETS, yearling hens. Rocks, Reds, Leghorns, also a few color cockerels. Cordes Poultry Farm, Spring Fork, Minnesota.

Wanted:

More advertisers to find out that Poultry Tribune classified advertising at 25c a word is the season's biggest value.—Class. Ad. Jim.

EGGS & POULTRY WANTED

FANCY, selected large and medium Brown and White eggs. Also dressed poultry. 24 hour return. U. J. McKee, Inc., 869 Washington St., New York City.

PRODUCERS and gatherers of fresh white and brown eggs receive excellent prices from us. Ship or write. Bank reference. Poultry National Bank. Between Reg Co., 1275 Grand Ave., New York City.

DOGS

RAT TERRIER puppies. Bred for ratting. Satisfaction guaranteed. Crusaders Kennels, Stafford, Kent.

HEATHPIT, registered collies, Pupae—ELMO, Rosalee Handley, New Liberty, Illinois.

ATREDADE puppies. John Foster, Gibson City, Illinois.

HEATHPIT, English Pitt Bull puppies. Reasonable. Carver Kennels, Deer Creek, Missouri.



HOW MANY FACES CAN YOU FIND IN THE PICTURE BELOW?



We are looking for Smart People

Yes—we are looking for smart people. We want smart people everywhere to help us advertise our business and distribute our products. We are going to award **several thousands of dollars in big cash prizes** to people everywhere. Prizes will be awarded to those who win in the prize distribution we will tell you about when we hear from you. See how many faces you can find.

Tell us in the coupon below and we will tell you how to win. Here's a lot of cash for some one. Would you like to have it? I am going to pay \$5,000.00 in big cash prizes to advertise our business quickly. Someone, maybe you, will receive new Buick Sedan and \$1,250.00 cash extra for promptness or if you win 1st prize and prefer all cash you get \$2,250.00. **Answer quick.**

**SEND ONLY THE COUPON BELOW
AND WE WILL TELL YOU HOW TO..**

Win \$2,250.00

or Buick Sedan and \$1,250.00 Cash!

Surely you would like to have this magnificent prize. Think what you could do with all this money. It would come in pretty handy right now, wouldn't it? **Then fill in the coupon below and we will tell you how you can win \$2,250.00.**

We want people everywhere to know us and to share in this great distribution of money. Besides the first grand prize, \$2,250.00

including promptness, there are 100 other big cash prizes. The second grand prize is \$750.00 cash, third grand cash prize is \$600.00 cash and many others. Duplicate prizes paid in case of ties. Thousands of dollars more in Special Cash Rewards which we will tell you all about when we get your answer. **This is your opportunity. Answer today.**

Send No Money — Just Mail Coupon

Study this interesting picture and see how many of the faces hidden in the tree, clouds, etc., you can find. Some look straight at you, some are upside down—others are sideways. It is not as easy as some people may think, but don't give up—keep looking and you may find them. **Mark them and send to me quick with the coupon** and I will tell you how to win first prize so you will receive the Buick Sedan and \$1,250.00 cash extra for promptness.

Many people have received big cash prizes. **Some have received several thousand dollars.** Names furnished on request. Now is your chance to win a big cash prize. **Answer today and see for yourself.** Oh Boy! What you could do with \$2,250.00 all cash at one time. I will be glad to pay it to you if you are adjudged the winner.

Hurry—mark the faces you find, send your answer quick. We will tell you how to win the \$2,250.00 prize.

SEND ANSWER QUICK

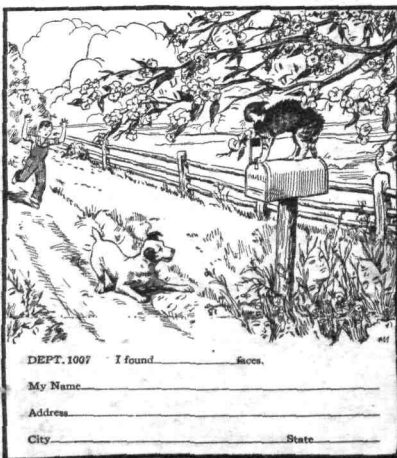
Remember, **send not one penny** with your answer—all you do now is to find as many faces as you can, and mail the coupon. We will answer you right away and tell you how you can win.

The money to pay every prize is on deposit in a big strong Des Moines bank. Three prominent Des Moines business men will see that the prizes are awarded honestly and promptly. Get your share of \$5,000.00 in cash prizes, besides thousands of dollars in Special Cash Rewards. Over 100 prizes in all. **Hurry! Just mark the faces you find and send with coupon right away. Some one wins—maybe you. Send your answer and see for yourself. Don't delay!... Mail your answer today.**

PARAMOUNT PRODUCTS, INC.
Dept. 1007
Des Moines, Iowa

**For
PROMPTNESS
\$1,250.00
EXTRA**

Send answer quick and we will tell you how to get \$1,250.00 extra cash for promptness



DEPT. 1007 I found _____ faces.

My Name _____

Address _____

City _____

State _____