

XL  
426  
I4659  
1882  
V.1  
Plates  
Moll.

LAND AND FRESHWATER  
MOLLUSCA OF INDIA,

Division of Mollusk  
Sectional Library

INCLUDING

SOUTH ARABIA, BALUCHISTAN, AFGHANISTAN, KASHMIR,  
NEPAL, BURMAH, PEGU, TENASSERIM, MALAY PENINSULA,  
CEYLON, AND OTHER ISLANDS OF THE INDIAN OCEAN.

SUPPLEMENTARY TO MESSRS. THEOBALD AND HANLEY'S  
CONCHOLOGIA INDICA.

BY

LIEUT.-COLONEL H. H. GODWIN-AUSTEN, F.R.S., F.G.S., F.Z.S., &c.

LATE DEPUTY SUPERINTENDENT TOPOGRAPHICAL SURVEY OF INDIA, IN CHARGE  
OF THE KHASI, GARO, AND NAGA-HILLS SURVEY PARTY.

---

PLATES TO VOLUME I.

---



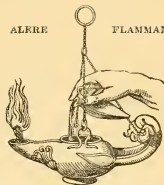
LONDON:

TAYLOR AND FRANCIS, RED LION COURT, FLEET STREET.

1889.

ALERE

FLAMMAM.



PRINTED BY TAYLOR AND FRANCIS,  
RED LION COURT, FLEET STREET.

PLATE I.

[Part I.—*February* 1882.]

- Fig. 1. *KALIELLA BARRAKFORENSIS*, Pfr., typical. Locality ?
2. ———. Near Barisal, Lower Bengal.
  - 3, 3 *a.* ———, = *SIVALENSIS*, Hutton. Mussoorie, N.W. Himalaya.
  - 3 *b.* ———: sculpture on base,  $\times 50$ . 4 to 5 lines = 0.005 inch\*.
  4. ———, close to *BARRAKFORENSIS*; copy of figure in J. A. S. B. Salem, Madras.
  5. ——— *CHERRAENSIS*, G.-A. Cherra Poongee, Khasi Hills.
  - 5 *a.* ———: sculpture on base,  $\times 50$ . 12 lines = 0.005 inch.
  6. ———, var. Near Barisal, Lower Bengal.
  7. ———. Fine specimen, Teria Ghat, Khasi Hills.
  8. ——— *KHASIACA*, G.-A. Khasi Hills, northern slopes.
  9. ——— *MUNIPURENSIS*, G.-A. Manipur Hills.
  - 9 *a.* ———: sculpture,  $\times 50$ .
  10. ———, var. Phúnggam, Lahúpa Naga Hills.
  11. ——— *SIGURENSIS*, G.-A. Seegoor Ghat and Neddiwuttom Passes, Nilgherri Hills.
  12. ——— *ASPIRANS*, W. T. & H. F. Blf. Nilgherri Hills.
  13. ——— *VULCANI*, G.-A. Puppá-doung Hill, Burmah.

\* This is always taken from a part of the upper surface of the last whorl just behind the aperture, except when otherwise stated.



PLATE II.

[Part I.—*February* 1882.]

Fig. 1. KALIELLA BARRAKPORENSIS, Pfr., = SIVALENSIS, Hutton, var. Mussoorie, N.W. Himalaya.

2. — CHERRAENSIS, G.-A. Teria Ghat, Khasi Hills.
3. — MUNIPURENSIS, G.-A. Manipur.
4. — JAINTIACA, G.-A. Marangsip Peak, Jaintia Hills.
5. — COSTULATA, G.-A. Tanir Ridge, Dafla Hills, north of Assam valley.
6. — SUBCOSTULATA, G.-A. North Khasi Hills.
7. — PERAKENSIS, G.-A. Perak, Malay Peninsula.
8. — FASTIGIATA, Hutton. Mussoorie, N.W. Himalaya.
9. — ELONGATA, G.-A. Raliang, N. Jaintia Hills.
10. — GRATIOSA, G.-A. Kopamedza Peak, Anghami Naga Hills.
11. — NAGAENSIS, G.-A. Kopamedza Peak, Anghami Naga Hills.
12. — TERIAENSIS, G.-A. Teria Ghat, base of Khasi Hills.



PLATE III.

[Part I.—February 1882.]

Fig. 1. *MICROCYSTINA RINKII*, Mörch, × 8.

- 1 *a.* — — — : sculpture, × 50.
2. — — — : columellar margin, × 20.
3. — — — : part of mantle, × 8. *r.d.l.*, right dorsal lobe; *l.d.l.*, left dorsal lobe.
4. — — — : extremity of foot, × 8. From spirit-specimen.
5. — — — : generative organs. *P.*, male organ; *Sp.*, spermatheca; *vd.*, vas deferens; *D.*, dart-sac.
6. — — — : jaw, × 50.
7. — — — : teeth of the radula, central, median, and lateral, × 1210.
- 7 *a.* — — — : ditto, ditto, × 360.
8. — — — *WARNEFORDI*, n. sp., × 7.
- 8 *a.* — — — : sculpture, × 50.
9. — — — *MOERCHIANA*, n. sp., × 4.
- 9 *a.* — — — : sculpture, × 50.
10. — — — *CRYPTOPHALUS*, n. sp., × 7.
- 10 *a.* — — — : sculpture, × 50.
- 10 *b.* — — — : columellar margin, × 20.
11. — — — *HARRIETENSIS*, n. sp., × 8.
- 11 *a.* — — — : sculpture, × 50.





PLATE IV.

[Part I.—*February* 1882.]

- Fig. 1. Animal of *Cryptosoma præstans*, Gould, from nature, nat. size. Copied from an original drawing made by native artist, under the superintendence of the late Dr. F. Stoliczka.
2. Animal (enlarged), from spirit-specimen, viewed from right side. Shell removed, showing the mantle and its lobes.
  3. Ditto, left side.
  4. Ditto, posterior side, viewed from above, showing the junction of the shell-lobes.
  5. Ditto, side view.
  6. Anterior portion, underside of foot, showing the segmented pallial margin.
  7. Side view of extremity of foot.
  8. Generative organs.
  9. Ditto, second specimen.
  10. Male organ, showing the cæcum or kalk-sac.
  11. Jaw,  $\times 20$ .
  12. Teeth of lingual ribbon,  $\times 360$ .
  - 12 *a*. Laterals, about the 100th from the central tooth.
  - 12 *b*. Outermost laterals.



PLATE V.

[Part II.—*July* 1882.]

- Fig. 1. *KALIELLA ANIMULA*, n. sp., × 7. Khasi Hills.  
2. ——— *LHOTAENSIS*, n. sp., × 7. Lhota-Naga Hills.  
2*a*. ——— : sculpture, × 50.  
3. ——— *BARRAKPORENSIS*, Pfr., × 7. Madagascar.  
4. ——— *BULLULA*, Hutton, × 7. North side Nag-Tiba range.  
5. ———, × 7, small var. Kumaon, N.W. Himalaya.  
6, 6*a*. ——— *NANA*, Hutton, × 7. Mussoorie, N.W. Himalaya.  
7. *KALIELLA RESINULA*, juv., n. sp., × 7. Teria Ghat, Khasi Hills.  
8. ——— *RESINULA*, n. sp., × 7. Khasi Hills.  
9. ——— *SIKKIMENSIS*, Nev. MS., × 7. Sikkim.  
10, 10*a*. ——— *FLATURA*, n. sp., × 7. Manipur.  
11. Teeth of the radula of *KALIELLA BARRAKPORENSIS*, Pfr., from a specimen from Barisal, Lower Bengal: central and twelve laterals. 11*a*. Outermost laterals, × 1250.



*Handwritten notes in cursive script, possibly describing the specimens or their collection details.*

PLATE VI.

[Part II.—*July* 1882.]

- Fig. 1. ANADENUS ALTIVAGUS, Theob.: animal, side view, nat. size. Spirit-specimen. Simla.
2. Ditto: respiratory orifice,  $\times 4$ .
  3. Ditto: ditto, with the anal aperture (*An.Ap.*) adjacent,  $\times 4$ .
  4. Ditto: the generative aperture,  $\times 4$ . Portion protruding showing the spines (*vide* Plate VII.).
  5. Ditto: the jaw,  $\times 7$ .
  6. Ditto: teeth of radula,  $\times 360$ . 6 a, 6 b. The outermost laterals.
  7. Ditto: the generative organs,  $\times 1\frac{1}{2}$ . *o.t.*, ovotestis; *h.d.*, hermaphrodite duct; *Al.Gld.*, albumen-gland; *ov.*, oviduct; *v.d.*, vas deferens; *P.*, male organ, with (*r.m.*) retractor muscle; *Sp.*, spermatheca.

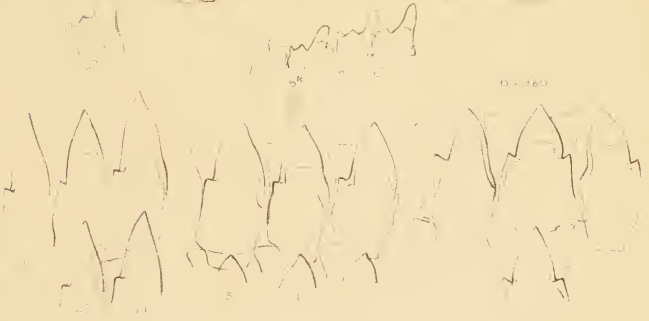
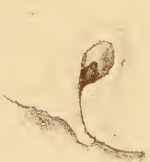
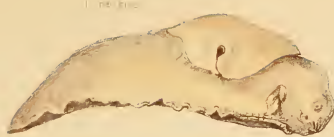


PLATE VII.

[Part II.—*July* 1882.]

- Fig. 1. ANADENUS ALTIVAGUS, Theob. : shell,  $\times 2$ . Simla.
2. Ditto, nat. size. = *giganteus*, Heynemann ; from his drawing, Taf. i. fig. 1 *g*.
3. ANADENUS SCHLAGINTWEITI, Heynemann, nat. size ; from his drawing, Taf. i. fig. 2 *e*.
4. Portion of back of *A. giganteus*, Heynemann ; from his drawing, Taf. i. fig. 1 *h*, &c.
5. ANADENUS ALTIVAGUS, Theob. Simla. View of heart and renal organ, seen from below, showing position of the different muscle-attachments. *Mf.*, Mantle, frontal edge ; *Ml.*, mantle, left side ; *R.*, renal organ surrounding the ventricle ; *i.*, intestine ; *r.m. T., P., & O.*, retractor muscle of eye-tentacles, penis, and odontophore respectively ; *Res.Or.*, position of respiratory orifice.
6. The generative aperture cut open on the frontal side to expose the dart-sac, with its numerous spines and (*a*) the perforated shield ; *b*, spines attached to the shield at its upper margin ; *c*, larger and stronger spines attached to the posterior upper part of the sac ; *d*, row of short spines extending to the generative aperture ; *e*, outer integument of the animal ; *e'*, muscular sac ; *f*, the aperture into the vagina and spermatheca below this and inclining upwards to the left (*vide* fig. 7, Plate VI.) ; *v.d.*, portion of vas deferens.
- 6 *a*. Upper portion of male organ (*P*), showing the termination of the vas deferens within the swollen portion where the retractor muscle is given off.
- 6 *b*. Diagrammatic vertical section of fig. 6, viewed from the side.
- 6 *c*. Horizontal section of same.
7. ANADENUS JERDONI, n. sp., nat. size ; spirit-specimen. Kashmir.

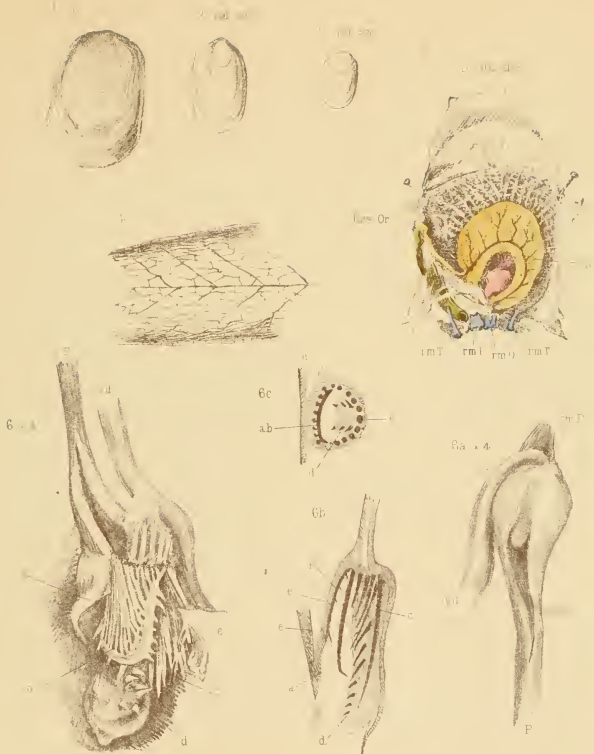




PLATE VIII.

[Part II.—*July* 1882.]

Fig. 1. *SITALA INFULA*, Benson, × 4. Calcutta.

1 *a*. Ditto : sculpture of last whorl, × 180. 1 *b*. Sculpture of the apical whorls, × 180.

1 *c*. Ditto : animal, × 2. From drawing by F. Stoliczka.

1 *d*. Ditto : jaw, enlarged. From drawing by F. Stoliczka.

1 *e*. Ditto : teeth of radula. From drawing by F. Stoliczka.

1 *f*. Ditto : generative organs, much magnified. 1 *g*. Showing enlargement of oviduct (*a*). From drawing by F. Stoliczka.

2. *SITALA ATTEGLIA*, Bs., × 4. From Moulmain, Tenasserim.

2 *a*. Ditto : sculpture of apical whorls, × 180. 2 *b*. Sculpture of the last whorl, × 180.

2 *c*. Ditto : right and left shell and dorsal lobes of the mantle, enlarged. From drawing by F. Stoliczka.

2 *d*. Ditto : jaw. From drawing by F. Stoliczka.

2 *e*. Ditto : teeth of radula.

2 *f*. Ditto : generative organs, much enlarged.

3. *SITALA ATTEGLIA*, Bs., × 4. Prome, Pegu.

4. — CULMEN, W. Blf., × 4. Pegu.



PLATE IX.

[Part II.—*July* 1882.]

- Fig. 1, 1 *a*. *SAGDINELLA DIDRICHSENI*, Mörch, × 7. Nicobar.  
2. *SITALA RIMICOLA*, Bs., × 7. Mussoorie, N.W. Himalaya.  
2 *a*. Ditto: sculpture of last whorl, × 50.  
3. *SITALA RIMICOLA*, var., Bs., × 7. Darjiling, E. Himalaya.  
3 *a*. Ditto: sculpture, × 50.  
4, 4 *a*. *SITALA RIMICOLA*, var., × 7. Khasi Hills.  
4 *b*. Ditto, × 4, viewed from below. 4 *c*. Ditto, nat. size.  
5, 5 *a*. *SITALA INJUSSA*, W. & H. Blf., × 7. Nilghiri Hills.  
5 *b*. Ditto: sculpture, × 50.  
6. *SITALA MONONEMA*, Bs., × 4. Ceylon.  
7. — *SRIMANI*, G.-A., × 7. Manipar.  
8. — *ARX*, Bs., × 4. Tenasserim.  
9, 9 *a*. — ? *TERTIANA*, W. & H. Blf., × 12. Nilghiri Hills.

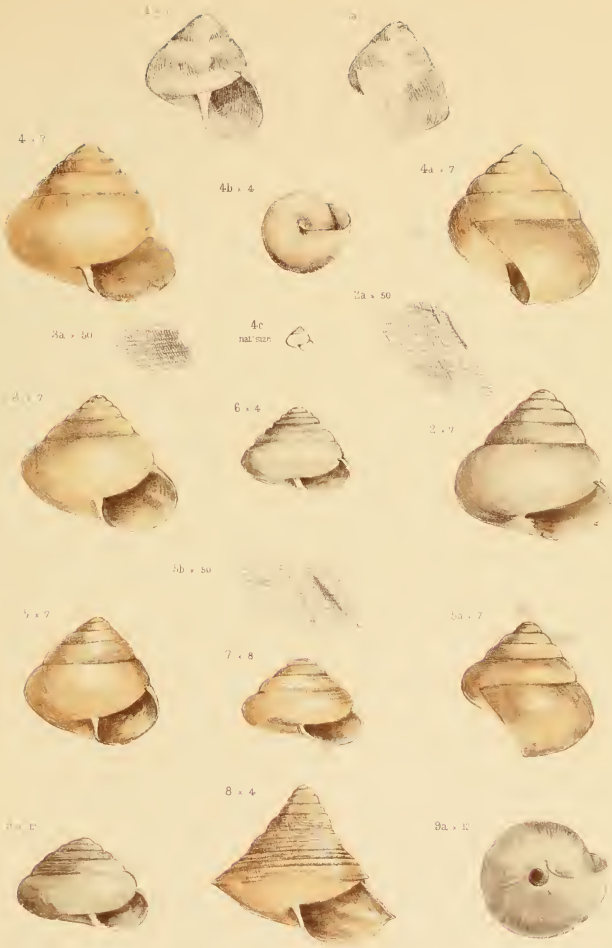
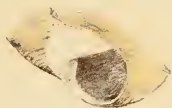


PLATE X.

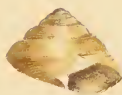
[Part II.—*July* 1882.]

- Fig. 1. *SITALA GRATULATOR*, W. Blf.,  $\times 4$ . Thayetmyo, Pegu.  
1 *a*, 1 *b*. Ditto, showing form of the columellar margin,  $\times 7$ .  
2. *SITALA CONFINIS*, W. Blf.,  $\times 4$ . Thayetmyo, Pegu.  
3. — *PALMARIA*, Bs.,  $\times 4$ . Mysore.  
4. — *PHULONGENSIS*, G.-A.,  $\times 7$ . N. Cachar.  
5. — *GROMATICA*, G.-A.,  $\times 7$ . Manipur.  
5 *a*. Ditto: sculpture,  $\times 50$ .  
6. *SITALA GROMATICA*, var.,  $\times 7$ . 6 *a*. Sculpture. Khasi.  
7. — *HAROLDI*, G.-A.,  $\times 7$ . 7 *a*. Sculpture,  $\times 50$ . Andamans.  
8. — *GROMATICA*, juv.,  $\times 7$ . North Cachar Hills.  
9. — *LIMATA*,  $\times 12$ . 9 *a*,  $\times 8$ . Pegu.  
10. — *TRICARINATA*, W. & H. Blf.,  $\times 20$ . Nilghiri Hills.  
11, 11 *a*. — *SUBBILIRATA*, G.-A., Nev. MS.,  $\times 12$ . Little Brother Andaman.  
12. Ditto, var.,  $\times 12$ . Batte Malve Island, Nicobars.

1a. 7



1 x 4



1b x 7



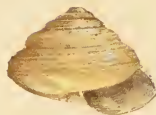
2 x 4



4a x 50



3 x



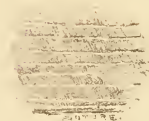
5a x 50



4 x



7a x 50



5 x 7



6 x 7



7 x



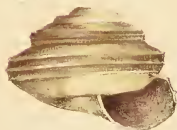
8a x 2



9a x 8



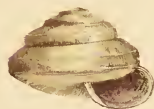
10 x 20



8 x



11 x 12



11a x 12



12 x 12

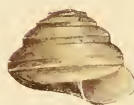
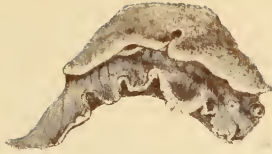


PLATE XI.

[Part II.—July 1882.]

- Fig. 1. Animal of *HYALIMAX (JARAVA) ANDAMANICA*, from spirit-specimen, right side, × 4.
2. Ditto, viewed from the left side.
  3. Ditto, right side, showing the position of the respiratory and anal orifices.
  - 4, 4 a. Ditto : shell, × 8 and natural size.
  5. Ditto : view from below, × 4. *A*, anal aperture; *V*, heart; *Res.or.*, respiratory aperture; *r.m.T.*, retractor-muscle tentacles; *r.m.B.*, ditto, buccal mass.
  6. Ditto : much enlarged view of the buccal mass, showing the form of its posterior end. *s*, salivary-gland duct.
  7. Ditto : jaw, × 20.
  8. Ditto : central teeth of the radula, × 1250.
  9. Ditto : generative organs, × 8.
  10. Shell of *HYALIMAX PERLUCIDUS*, Quoy and Gaimard, from Mauritius.



1.3.4



1.3.5

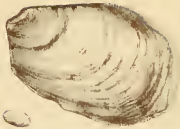


1.3.6



1.3.7

4.6



4.4



4.5

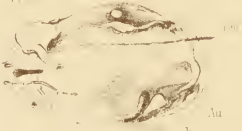


4.7

Dis or

N. 1

1.3.8



1.3.9

Au

V

1.3.1

5





PLATE XII.

[Part II.—*July* 1882.]

- Fig. 1. *GEOMALACUS MACULOSUS*, Allman: side view of extremity of foot, with mucous gland, from spirit-specimen. *a*, view from behind, ditto.
2. Ditto: shell,  $\times 7$ .
  3. Ditto: jaw,  $\times 20$ .
  4. Ditto: teeth of radula,  $\times 360$ . *4 a.* 12th to 18th; *4 b.* Outermost laterals.
  5. Ditto: generative organs,  $\times 2$ .
  6. Ditto: ditto, portion of, from second specimen. Male organ.
  7. Ditto: the basal portion of male organ, laid open. *Gen. Ap.*, position of generative aperture; the external opening is on the other side.
  8. Ditto: position of renal organ, heart, and the retractor muscles, viewed from below,  $\times 3$ .
  9. *ARION ATER*. Reigate. Position of above organs, similar view,  $\times 2$ .
  10. *LIMAX AGRESTIS*, Müller: ditto, ditto,  $\times 3$ . *Mf.*, mantle, frontal edge; *Ml.*, mantle, left margin; *r.m.O., T., P.*, retractor-muscle attachments of odontophore, eye-tentacle, and penis; *s*, position of apex of shell.

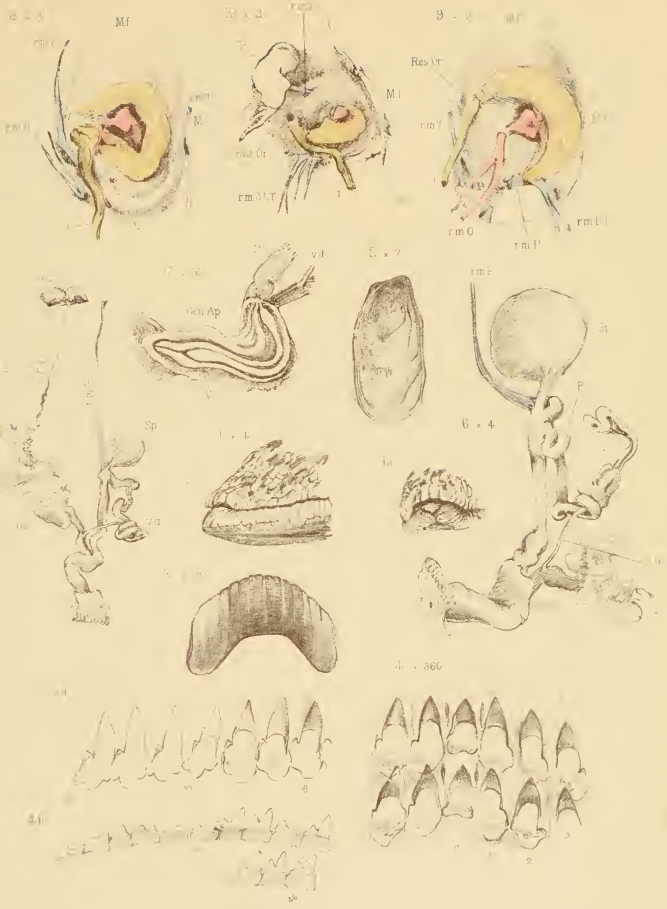


PLATE XIII.

[Part III.—*January* 1883.]

- Fig. 1, 1 *a*. *SITALA INTONSA*, G.-A., × 7. Khasi Hills.  
1 *b*. Ditto: sculpture, × 50.  
2. *SITALA CRENICINCTA*, G.-A., × 12. Khasi Hills.  
3. Ditto, × 7.  
4, 4 *a*, 4 *b*. *SITALA RECONDITA*, G.-A., × 7. Raliang, Jaintia Hills.  
4 *c*. Ditto: sculpture, much enlarged.  
5. *SITALA UVIDA*, G.-A., × 7. Teria Ghat, Khasi Hills.  
6. — ? *NEVILLI*, G.-A., × 4. Darjiling.

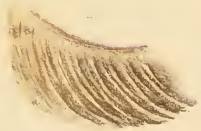
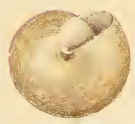
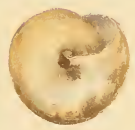
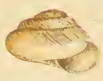
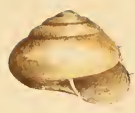
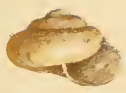
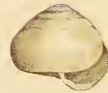
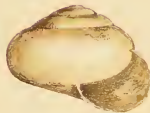
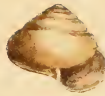


PLATE XIV.

[Part III.—*January 1883.*]

- Fig. 1. *MACROCHLAMYS FOONGEE*, Theobald,  $\times 4$ . Moulmain, Tenasserim.  
2. —? *KANDIENSIS*, Nevill, MS.,  $\times 7$ . Kandy, Ceylon.  
3. *SITALA PLACITA*, G.-A.,  $\times 12$ . Khasi and Manipur.  
4. *MACROCHLAMYS UMBRATICOLA*, G.-A.,  $\times 7$ . North Cachar Hills.  
1 a. Ditto: sculpture,  $\times 50$ .  
5. *MACROCHLAMYS PERPAULA*, Benson,  $\times 7$ . Moulmain, Tenasserim.  
6. *SITALA SUBNANA*, Nevill, MS.,  $\times 8$ . Jessore.  
7. *MACROCHLAMYS FACETA*, G.-A.,  $\times 12$ . Dafia Hills.  
8. —? *ANONE*, G.-A.,  $\times 12$ . Calcutta.  
9. *HELIX?* (—?) *GLOMEROSA*, G.-A.,  $\times 20$ . Dafia Hills.  
10. *MACROCHLAMYS FACATA*, G.-A.,  $\times 8$ . Lhota Naga Hills.  
11. — *ENATA*, G.-A.,  $\times 8$ . Lhota Naga Hills.  
12. — *ORIGINARIA*, G.-A.,  $\times 8$ . Manipur.  
13. — *SATA*, G.-A.,  $\times 8$ . Dafia Hills.



SCIMITRE

Museo di Storia Naturale

PLATE XV.

[Part III.—*January* 1883.]

- Fig. 1. KALIELLA LAILANGROTENSIS, G.-A., × 7. Khasi Hills.  
1 *a*. Ditto: sculpture, × 50.  
2. SITALA BALLIANA, Nev. MS., × 7. Gaujam.  
3, 3 *a*. KALIELLA KEZAMAHENSIS, G.-A., × 8. Naga Hills.  
4, 4 *a*. — RUGA, G.-A., × 8. Naga Hills.  
5, 5 *a*. — BURRAILENSIS, G.-A., × 7. Naga Hills.  
5 *b*. Ditto: sculpture, × 50.  
6, 6 *a*. KALIELLA CONULUS, W. T. Blf., × 12 and 8. North Cachar.





PLATE XVI.

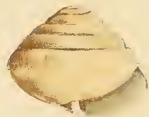
[Part III.—*January* 1883.]

- Fig. 1. *KALIELLA*? *CHENNELLI*, G.-A., × 7. Lhota Naga Hills.
- 1 *a.* Ditto, suture between first and second whorls.
2. *KALIELLA* *NONGSTEINENSIS*, G.-A., × 12. North Khasi Hills.
3. — *DIKRANGENSIS*, G.-A., × 20. Dafia Hills.
4. — *TIRUTANA*, G.-A., × 24. North Khasi.
5. Ditto, juv., × 24. North Khasi.
6. *KALIELLA* *LEITHIANA*, G.-A., × 7. Ceylon.
- 6 *a.* Ditto: umbilical region, × 12.
- 6 *b.* Ditto: the keel of the last whorl, much enlarged.
- 7, 7 *a.* *MACROCHLAMYS*? *PLANIUSCULA*, Hutt., × 9. N.W. Himalaya.
8. — ? *MOLECUA*, Bs., × 7. Rangoon, Pegu.

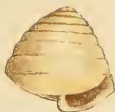
100



5. 26



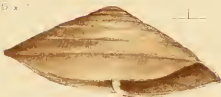
2. 21



10. 30



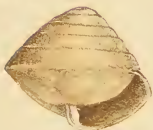
11. 7



3. 24



2. 24



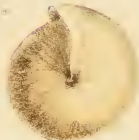
6b. 30



5a



7. 2



6. 7

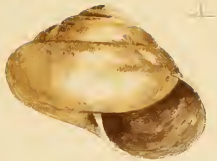


PLATE XVII.

[Part III.—*January* 1883.]

- Fig. 1. *MACROCHLAMYS LONGICAUDA*, G.-A., × 8. Khasi Hills.  
2, 2 a. Ditto, var., × 8. Khasi Hills.  
3. *MACROCHLAMYS NENGLOENSIS*, G.-A., × 8. Naga Hills.  
4. — *LONGICAUDA*, var., × 7. S. Jaintia Hills.  
5. — *NENGLOENSIS*, var., × 8. Manipur.  
6. — *KOLIAENSIS*, G.-A., × 7. Assam.  
7. — *ROBERTI*, G.-A., × 8. Burraill range.  
8. — *DORANI*, G.-A., × 8. Khasi Hills.  
9. — *TANIRENSIS*, G.-A., × 8. Dafia Hills.  
10. — *RUSTICULA*, G.-A., × 12. North Khasi Hills.  
11. — (?) *DARJILINGENSIS*, Nevill, MS., × 20. Darjiling.

1. 8



2. 8



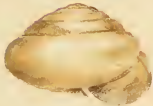
2a. 8



3. 8



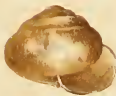
6. 7



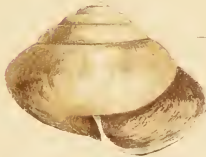
7. 8



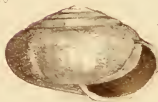
8. 8



4. 7



11. 20



9. 8



10. 12



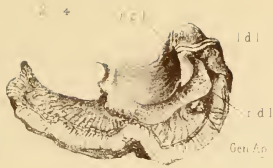
5. 8



PLATE XVIII.

[Part III.—*January* 1883.]

- Fig. 1. *MACROCHLAMYS INDICA*, Bs., nat. size. Calcutta. Showing position of the right shell-lobe in life, somewhat contracted.
2. Ditto, spirit-specimen; view of right side,  $\times 4$ , showing:—*r.s.l.*, right shell-lobe; *r.d.l.*, *l.d.l.*, right dorsal lobe and left dorsal lobe.
3. Ditto, ditto: left side, with left shell-lobe (*l.s.l.*) and posterior termination of the left dorsal lobe (*l.d.l.*).
4. Ditto: sketch of end of the foot, from life, somewhat enlarged.
- 5, 5 *a.* Ditto, shell of,  $\times 2.4$ .
6. Ditto: generative organs,  $\times 4$ ; *h.d.*, hermaph. duct; *Al.Gd.*, albumen-gland; *o.v.*, oviduct; *P.*, penis; *c.r.P.*, cæcum of retractor muscle of the penis; *c.d.*, cæcum calciferum, or kalk-sac; *D.*, the amatorial organ.
7. Ditto: jaw,  $\times 20$ .
- 8, 8 *a.*, 8 *b.* Portion of the radula,  $\times 360$ ; central, median, and lateral teeth.



4 enlarged



5 - 24



5a - 24



6 - 24

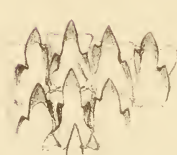
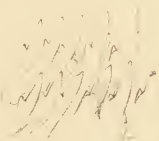
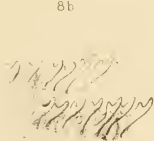


7 - 24

8a

8 - 260

8b



11 10

PLATE XIX.

[Part III.—*January* 1883.]

- Fig. 1, 1 *a*. *MACROCHLAMYS PETROSA*, Hutton. Bhangulpur.  
2. — *TUGURIUM*, Bs. Darjiling.  
3, 3 *a*. — *SIKRIGULLIENSIS*?, Nevill. Calcutta.  
4. — *PERPLANA*, Nevill. Parisnath.  
5. — *LECYTHIS*, Bs. ? Parisnath.  
6, 6 *a*. — *DECUSSATA*, Bs., *in situ*, and to show the shell-lobes. Cherra Poongee.  
7. — *HONESTA*, Gould: *r.s.l.*, *l.s.l.*, right and left shell-lobes; *r.d.l.*, *l.d.l.*, right and left dorsal lobes. Mulé-it range, Tenasserim.  
7 *a*. Ditto: extremity of foot, from spirit-specimen.  
7 *b*. Ditto: jaw, ditto.

These species will be described in detail in Part IV. Figures 1-5 are from drawings by a native artist, executed under the superintendence of Ferd. Stoliczka, and preserved in the Indian Museum Library, Calcutta.





PLATE XX.

[Part III.—*January* 1883.]

Fig. 1. *MACROCHLAMYS LONGICAUDA*, G.-A.: the extremity of foot, from spirit-specimen, × 12.

1 *a.* Ditto: the extremity of foot, showing the long lobe over the mucous gland. Drawn from life.

1 *b.* Ditto: the mantle, from spirit-specimen, × 12.

1 *c.* Ditto: jaw, × 20.

1 *d.* The odontophore, central and median teeth, × 720.

1 *e.* Outermost laterals, × 720.

2. *MACROCHLAMYS LAILANGKOTENSIS*, G.-A., jaw of, × 50.

2 *a.* Ditto: central and median teeth up to the 7th, and 8th, 9th, and 10th laterals; 2 *b.*, 11th, 12th, and 13th laterals; 2 *c.*, the outermost laterals, × 720.

3. *MACROCHLAMYS TUGURIUM*, Benson, showing the shell- and mantle-lobes: lettering as above. *Res.or.*, respiratory orifice. In 3, 3 *a.*, the *l.s.l.* would turn backwards over the edge of the shell.



PLATE XXI.

[Part III.—*January* 1883.]

Sculpture of portion of last whorl near aperture,  $\times 50$ ; viewed from above, the aperture directed towards the bottom of the diagram.

- Fig. 1. *MACROCHLAMYS INDICA*, Bs. Calcutta.  
2. — *PETROSA*, Hutton. Rajmahal.  
3. — *SPLENDENS*, Hutton. Mussoorie.  
4. —, near *LUBRICA*, Bs. Dafia Hills.  
5. —, species undetermined. Lhota Naga.  
6. — *DAFLAENSIS*, G.-A. Dafia Hills, Assam.  
7. — *CASTANEO-LABIATA*, G.-A. Naga Hills.  
8. — *MASURIENSIS*, G.-A. N.W. Himalaya.  
9. — *SYLHETENSIS*, G.-A. Chatak.  
10. — *HARDWICKII*, G.-A. Calcutta.  
11. *BENSONIA MONTICOLA*, Hutton, juv. Mussoorie.  
12. — ditto, = *LABIATA*, Pfr. Mussoorie.  
13, 13 a. *MACROCHLAMYS*? *PEDINA*, Benson: first and second whorls. Bombay.  
14. — *STAFFORDI*, G.-A.: ditto. Dafia Hills.  
15. — *DECUSSATA*, Bs. Khasi Hills.  
16. — *LONGICAUDA*, G.-A. Khasi Hills.  
17. — ? *TEXTRINA*, Bs. Pegu.



PLATE XXII.

[Part IV.—*September* 1883.]

- |  |                           |
|--|---------------------------|
| Fig. 1. MACROCHLAMYS PETROSA, Hutton, × 2·4. | Rajmahal.                 |
| 2, 2 a. — PRONA, Nevill, × 2·4.              | Mussoorie, N.W. Himalaya. |
| 3. — EXUL, Theobald, × 2·4.                  | Andaman Islands.          |
| 4, 4 a. — SPLENDENS, Hutton, × 2·4.          | Mussoorie.                |
| 5. — SHENGORENSIS, n. sp., × 2·4.            | Dafta Hills.              |
| 6, 6 a. — CHOINIX, Benson, × 2·4.            | Andamans.                 |



*Hydrobia ulvae* Linn.

ECRINIDE

*Hydrobia ulvae* Linn.

PLATE XXIII.

[Part IV.—*September* 1883.]

All enlarged 2·4.

- |   |                   |
|---|-------------------|
| Fig. 1. <i>MACROCHLAMYS HARDWICKEI</i> , n. sp. | Calcutta.         |
| 2. Ditto.                                       | Sylhet.           |
| 3. Ditto, var. <i>POLITULUS</i> .               | Eastern Assam.    |
| 4. Ditto, var.                                  | Darrang.          |
| 5. <i>MACROCHLAMYS LHOTAENSIS</i> , n. sp.      | Lhota-Naga Hills. |
| 6, 6 <i>a.</i> — <i>OPIPARUS</i> , n. sp.       | Darjiling.        |





PLATE XXIV.

[Part IV.—*September* 1883.]

All enlarged 2·4.

- |   |                                  |
|---|----------------------------------|
| Fig. 1. <i>MACROCHLAMYS ATRICOLOR</i> , Godwin-Austen.          | North Cachar Hills.              |
| 2. Ditto, large var.  | Munipur Hills.                   |
| 3. Ditto, small var.  | Munipur Hills and Burreil range. |
| 4. Ditto, var.  | Dafra Hills.                     |
| 5. Ditto, var.  | Khakyen Hills, Upper Burmah.     |
| 6. <i>MACROCHLAMYS CACHARICA</i> , n. sp., var. <i>GLAUCA</i> . | Dafra Hills.                     |
| 7. — <i>LUBRICA</i> , Bs.                                       | Darjiling.                       |

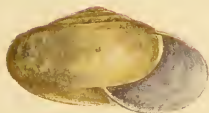
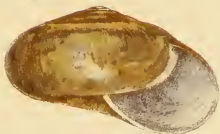
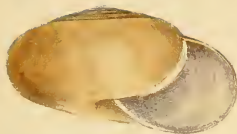


PLATE XXV.

[Part IV.—*September* 1883.]

MACROCHLAMYS ATRICOLOR, G.-A. Manipur Hills.

- Fig. 1. Animal, spirit-specimen, showing mantle and shell-lobes,  $\times 2.4$ .
2. Ditto, viewed from right side, showing position as regards the shell,  $\times 1.5$ .
  3. Ditto, mantle, viewed from left side,  $\times 2.4$ .
  4. Entire animal, left side,  $\times 2.4$ .
  5. Head, viewed from right side, showing position of generative aperture,  $\times 2.4$ .
  6. Head, front view, showing form of mouth,  $\times 4$ .
  7. Extremity of foot, viewed from behind,  $\times 7$ .
  8. Mantle, viewed from below or inside, showing the division into two lobes.
  9. Same view of mantle in *M. INDICA*, Bs. Calcutta.
  10. Mantle of *M. INDICA*, viewed from the outside, showing the additional shell-lobe.



MADRECHLAMYS

PLATE XXVI.

[Part IV.—September 1883.]

All enlarged 2·4.

- |         |  |             |
|---------|--|-------------|
| Fig 1.  | MACROCHLAMYS? RESPLENDENS, Phil.                       | Tenasserim. |
| 2.      | Ditto.   | Cambodia.   |
| 3.      | Ditto.   | Siam.       |
| 4.      | MACROCHLAMYS? CONSEPTA, small var.                     | Tenasserim. |
| 5, 5 a. | —— KOLIAENSIS.   | Assam.      |
| 6.      | —— POLITISSIMA, Pfr.                                   | Ceylon.     |
| 7.      | —— JAINIANA, n. sp., G.-A.                             | Parishath.  |
| 8.      | —— JAINIANA, n. sp., = <i>stricklandi</i> , MS., G.-A. | Jeypur.     |

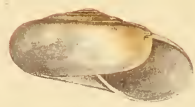
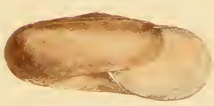
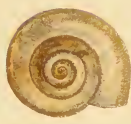
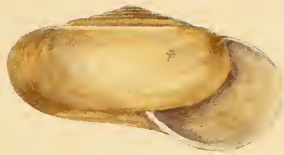


PLATE XXVII.

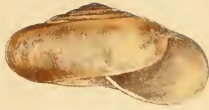
[Part IV.—September 1883.]

(*Vide* shell of Plate XXIV. fig. 2.)

- Fig. 1 *a.* *MACROCHLAMYS* *ATRICOLOR*, G.-A., jaw,  $\times 12$ . Muni pur Hills.  
1 *b.* Ditto: teeth of radula,  $\times 360$ .  
1 *c.* Ditto: salivary gland: *a*, intestine; *c*, duct of gland.  
1 *d.* Ditto: generative organs,  $\times 2\cdot4$ .  
2. *MACROCHLAMYS* *CACHARICA*, n. sp.,  $\times 2\cdot4$ . Muni pur Hills.  
2 *a.* Ditto: jaw,  $\times 12$ .  
2 *b.* Ditto: radula,  $\times 360$ .  
2 *c.* Ditto: generative organs,  $\times 4$ .  
3. *MACROCHLAMYS* *ATRICOLOR*, small var. Kopamedza Peak, Naga Hills.

2-24

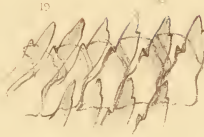
3-33



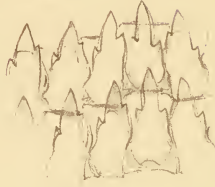
10-100



10



100-100



24-24



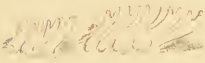
24-24



26-26



26-26



26



26

33-33



33-33



hd

Al Gu

MACROCHLAMYS

- 1. atricolor
- 2. cacharica



PLATE XXVIII.

[Part IV.—*September* 1883.]

Fig. 1. *MACROCHLAMYS HARDWICKEI*, n. sp., portion of radula. Calcutta.

1 *a.* Ditto: generative organs, enlarged.

1 *b.* Ditto: male organs, much enlarged.

2. *MACROCHLAMYS JAINIANA*, n. sp. Parísnath. Portion of radula, median and lateral teeth,  $\times 360$ .

2 *a.* Ditto: jaw,  $\times 12$ .

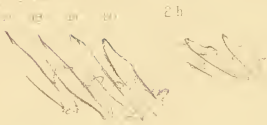
2 *b.* Ditto: portions of spermatophore,  $\times 50$ .

2 *c.* Ditto: ditto,  $\times 180$ .

2 *d.* Ditto: ditto,  $\times 180$ .

2 *e.* Ditto: spermatophore, posterior end of,  $\times 180$ .

3. *MACROCHLAMYS KOLIAENSIS* (*vide* Plate XXVI. figs. 5, 5 *a*): portion of radula,  $\times 360$ .



Pl. (with 1888-1890)

**MACHOCHLAMYC**

(with 1891-1892)

(with 1893-1894)

PLATE XXIX.

[Part IV.—*September* 1883.]

Fig. 1, 1 *a*. *MACROCHLAMYS CASTANEO-LABIATA*, G.-A.,  $\times 2\cdot4$ . Manipur Hills.

2. Ditto,  $\times 2\cdot4$ . Asalu.
3. Ditto,  $\times 2\cdot4$ . Rezameh, Naga Hills.
4. Ditto: mantle and lobes of No. 1,  $\times 4$ .
5. Ditto: jaw,  $\times 12$ .
6. Ditto: central portion of radula,  $\times 180$ .
- 6 *a*. Ditto: an Asalu sp.,  $\times 340$ .
- 6 *b*. Ditto: median teeth 6 to 10,  $\times 340$ .
- 6 *c*. Ditto: outermost laterals,  $\times 340$ .
7. Ditto: generative organs of No. 1,  $\times 4$ .



PLATE XXX.

[Part IV.—*September* 1883.]

- Fig. 1, 1 *a*. OXYTES OXYTES, Bs. Shell, natural size; largest specimen from S.W. Khasi Hills.
- 2, 2 *a*. Ditto: usual size. Same locality.
3. Ditto: animal. Cachar. From original drawing (No. 36) by native artist in Library, Indian Museum, Calcutta.
- 3 *a*. Ditto: the mucous gland, viewed from above.
- 3 *b*. Ditto: tentacles.
4. OXYTES OROBIA, Bs., from Stoliczka's original drawing (No. 45) made by a native artist.



PLATE XXXI.

[Part IV.—September 1883.]

- Fig. 1. OXYTES CYCLOPLAX, Bs., nat. size, juv. W. Bhutan Hills.
2. Ditto: animal, shell removed, viewed from right side,  $\times 4$ .
  3. Ditto: extremity of foot, viewed from behind,  $\times 4$ .
  4. Ditto: mantle-edge, as seen from left side,  $\times 4$ .
  5. Ditto: jaw,  $\times 12$ .
  6. Ditto: radula, centre teeth of,  $\times 180$ .
  - 6 a. Ditto: last median and first lateral teeth,  $\times 180$ .
  - 6 b. Ditto: outermost laterals,  $\times 180$ .
  7. Ditto: generative organs,  $\times 4$ .
  - 8 8 a. 8 b. OXYTES CYCLOPLAX, Bs., adult shell, nat. size. Darjiling.

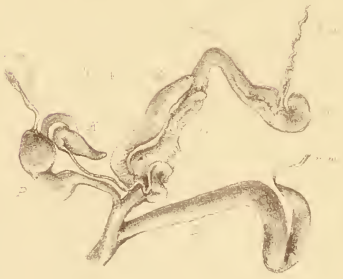
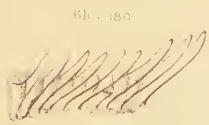
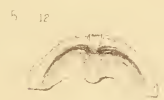
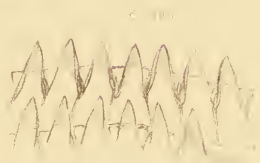




PLATE XXXII

[Part IV.—September 1883.]

Fig. 1. *Oxytes orobla*, Bs. Darjiling. Animal, from spirit-specimen, left side, with shell nearly all removed.

1 *a.* Ditto: right side and sole of foot.

1 *b.* Ditto: the left postdorsal lobe, enlarged.

2. Ditto: jaw.

3. Radula, central portion,  $\times 200$ ; 3 *a.* Ditto, newer teeth; 3 *b.* 9th, 10th, and 11th median; 3 *c.* 15th to 20th lateral teeth; 3 *d.* The outermost laterals.

4. Portion of animal in apex of shell, showing position of the hermaphrodite duct and liver-lobes.

5. Generative organs.

5 *a.* Junction of hermaphrodite duct with the albumen-gland, very much enlarged.

5 *b.* Portion of male organ, showing the calc-sac and coiled cæcum of the retractor muscle.

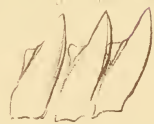
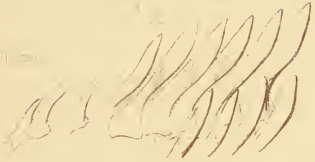
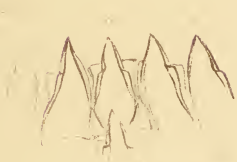
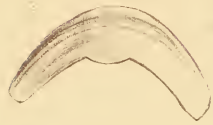
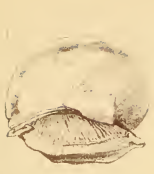


PLATE XXXIII.

[Part IV.—September 1883.]

- Fig. 1. *ARIOPHANTA IMMERITA*, W. Blf., nat. size. South India.
2. Ditto: mantle viewed from left side, shell removed,  $\times 4$ .
  - 2 *a*. Ditto: the same turned back.
  3. Ditto: side view of extremity of foot.
  - 3 *a*. Ditto: back view of same, showing mucons gland.
  4. Ditto: jaw,  $\times 7$ .
  5. Ditto: teeth of radula, central portion,  $\times 340$ .
  - 5 *a*. Ditto: 20th to 24th median, 25th and 26th intermediate.
  - 5 *b*. Ditto: outermost laterals.
  6. Ditto: generative organs,  $\times 2.4$ .
  - 6 *a*. Ditto: male organ,  $\times 4$ .
  - 7, 7 *a*. *ARIOPHANTA LEVIPES*, Müll., nat. size. Bombay.

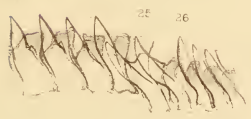
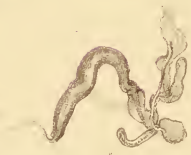
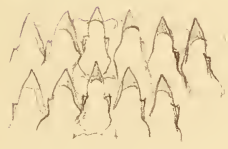
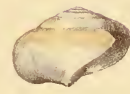
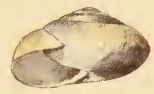
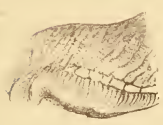
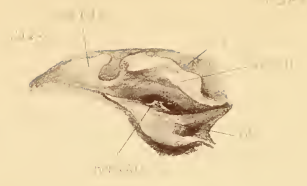


PLATE XXXIV.

[Part IV.—September 1883.]

Fig. 1. *ARIOPHANTA LEVIPES*, Müller.

1 *a.* Ditto: extremity of foot, from above.

2, 2 *a.* *ARIOPHANTA INTERRUPTA*.

3. ——— *LIDLAVANA*, Pfr.

The above are copied from drawings by a native artist.

4. *ARIOPHANTA?* *RETROSA*, Gould, nat. size. Tenasserim.

5. Ditto: sculpture of last whorl,  $\times 12$ .

6. *ARIOPHANTA INTERRUPTA*: sculpture of last whorl,  $\times 12$ .

7. ——— *RETROSA*: jaw.

8. Ditto: central and three median teeth of radula.

8 *a.* Ditto: 8th, 9th, and 10th median, 11th transition, and first laterals.

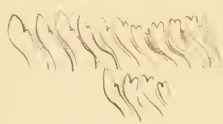
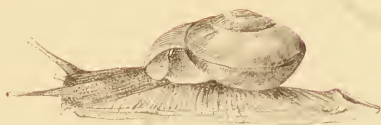
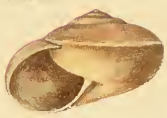
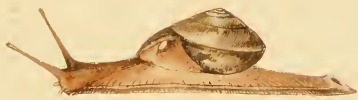


PLATE XXXV.

[Part IV.—*September* 1883.]

Fig. 1, 1 *a*. *MACROCHLAMYS DALINGENSIS*, G.-A.,  $\times 2\cdot4$ . W. Bhutan Hills.

2. Ditto: sculpture on last whorl,  $\times 50$ .
3. Ditto: animal, right side, showing mantle and shell-lobes,  $\times 4$ .
4. Ditto: ditto, left side, ditto,  $\times 4$ .
5. Ditto: ditto, front view,  $\times 4$ .
6. Ditto: extremity of foot, showing mucous gland,  $\times 7$ .
7. Ditto: jaw,  $\times 12$ .
8. Ditto: odontophore, central teeth,  $\times 200$ .
- 8 *a*. Ditto: ditto,  $\times 200$ .
- 8 *b*. Ditto: ditto, last laterals,  $\times 200$ .
9. Generative organs,  $\times 2\cdot4$ .
10. Buccal mass, mucous and salivary glands,  $\times 2\cdot4$ .

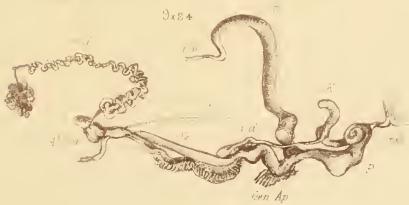
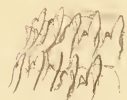
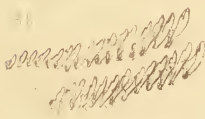
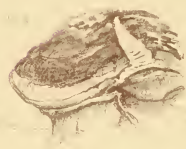
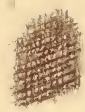




PLATE XXXVI.

[Part IV.—*September* 1883.]

- Fig. 1. *AUSTENIA PLANOSPIRA*, Bs. Darjiling. From a drawing by a native artist.
2. Ditto: from a spirit-specimen, right side,  $\times 2\cdot4$ .
3. Ditto: ditto, left side,  $\times 2\cdot4$ .
4. Ditto: the mucous gland, viewed from behind,  $\times 7$ .
5. Ditto: shell, nat. size.
- 5 *a*, 5 *b*, 5 *c*, 5 *d*. Ditto: shell,  $\times 2\cdot4$ .
6. *AUSTENIA BENSONI*, Pfr., nat. size. Calcutta. From a drawing by a native artist.
- 7, 7 *a*, 7 *b*. Ditto: shell,  $\times 2\cdot4$ . Jessore District.

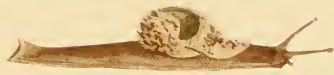


Fig. 54



PLATE XXXVII.

[Part IV.—*September 1883.*]

- |   |               |
|---|---------------|
| Fig. 1, 1 <i>a</i> , 1 <i>b</i> . <i>AUSTENIA SALIUS</i> , Bs., × 24. | Teria Ghat.   |
| 2, 2 <i>a</i> , 2 <i>b</i> . — <i>SALIUS</i> , Bs., var., × 24.       | Darjiling.    |
| 3, 3 <i>a</i> , 3 <i>b</i> . — <i>FANCHETENSIS</i> , × 24.            | Lower Bengal. |
| 4, 4 <i>a</i> , 4 <i>b</i> . — <i>PAPILLASPIRA</i> , G.-A., × 24.     | N.W. Khasi.   |
| 5, 5 <i>a</i> , 5 <i>b</i> . — <i>GLOBOSA</i> , × 24.                 | Daffa.        |

1. 24



1 a



1 b



2. 24



2 a



2 b



3. 24



3 a



3 b



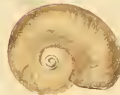
4. 24



4 a



4 b



5. 24



5 a



5 b

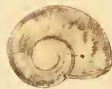


PLATE XXXVIII.

[Part IV.—September 1883.]

AUSTENIA PLANOSPIRA, Benson. W. Bhutan Hills.

Fig. 1. Generative organs,  $\times 4$ .

1 *a*. Amatorial organ,  $\times 7$ .

1 *b*. Buccal mass and gland, salivary gland, &c.,  $\times 4$ .

AUSTENIA BENSONI, Pfr. Calcutta.

2. Radula, median and laterals,  $\times 340$ .

AUSTENIA BENSONI, var. SYLHETENSIS. Sylhet.

3. Shell,  $\times 2\cdot4$ .

3 *a*. Extremity of foot and mode of carrying it (enlarged).

3 *b*. Mantle-edge removed,  $\times 4$ .

3 *c*. Radula,  $\times 340$ .

4, 4 *a*. SITALA CRENICINCTA: radula,  $\times 1250$ .

5. KALIELLA BARRAKFORENSIS: generative organs,  $\times 12$ .

6. To illustrate the dimensions as given in this work.

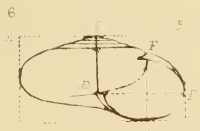
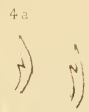
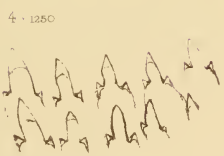
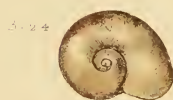
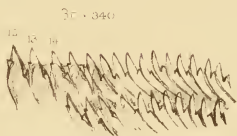
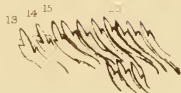
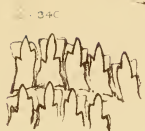


PLATE XXXIX.

[Part IV.—*September* 1883.]

- Fig. 1. *DURGELLA MINUTA*, G.-A.: from life, nat. size. Dafla Hills.
2. Ditto: view of right side, showing the shell-lobes,  $\times 4$ .
  - 2 *a*. Ditto: left side, ditto,  $\times 4$ .
  3. Ditto: shell,  $\times 4$ .
  - 3 *a*. Ditto: ditto,  $\times 2\cdot4$ .
  4. Ditto: jaw,  $\times 20$ .
  5. Ditto: central tooth of radula and adjacent teeth,  $\times$  about 1250.
  - 5 *a*. Ditto: laterals near margin.
  6. Generative organs,  $\times 7$ .
- 7, 7 *a*. *DURGELLA KHASIANA*, G.-A., from life, nat. size. West Khasi Hills.
- 7 *b*. Ditto,  $\times 2\cdot4$ .
  8. Ditto: central teeth of radula, very much enlarged.
  - 8 *a*. Ditto: ditto, two rows,  $\times 340$ .
  - 8 *b*. Ditto: the outermost laterals, very much enlarged.

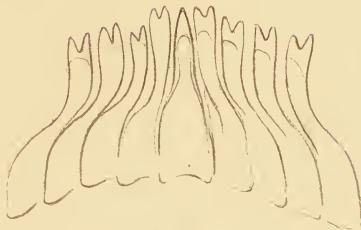
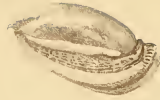




PLATE XL.

[Part IV.—September 1883.]

- Fig. 1. *MACROCHLAMYS KALA*, G.-A. : shell,  $\times 4$ . Western Bhutan Hills.
- 1 *a*. Ditto: ditto,  $\times 2.4$ .
  - 1 *b*. Ditto: ditto, nat. size.
  2. Ditto: animal, viewed from right side, shell removed, showing shell and dorsal lobes,  $\times 4$ .
  3. Ditto: ditto, viewed from left side,  $\times 4$ .
  4. Ditto: shell and dorsal lobes removed,  $\times 7$ .
  5. Ditto: generative organs,  $\times 4$ .
  6. Ditto: male organ: *sp*, the spermatophore developing,  $\times 7$ .
  7. Ditto: spermatheca,  $\times 12$ : *sp*, a spermatophore within it.
  8. Ditto: jaw,  $\times 12$ .
  - 9, 9 *a*. Teeth of radula,  $\times 340$ .
  - 10, 10 *a*. *MACROCHLAMYS KAZAMAENSIS*, G.-A. (Plate XV. figs. 3, 3 *a*): portion of the radula,  $\times 1250$ .
  11. Ditto: a portion of spermatophore,  $\times 110$ .



PLATE XLI.

[Part IV.—*September* 1883.]

- Fig. 1, 1 *a*. *HELICARION HELENÆ*, n. sp. Sydney. From a drawing by Mrs. H. Forde.
2. View of right side of a spirit-specimen, shell removed, showing mantle and lobes, × 4.
  3. View of left side, ditto.
  4. View from behind.
  5. Shell, × 4.
  6. Jaw, × 12.
  - 7, 7 *a*, 7 *b*. Portions of a row of the radula, × 340.
  8. Generative organs, × 4.
  - 8 *a*. Male organ, × 12.
  9. *HELICARION CUVIERI*: generative organs, after Professor Semper.
  10. Ditto: teeth of radula, central, Nos. 1, 5, 14, 17, and 20, × 260.

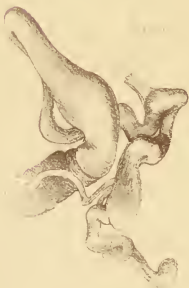
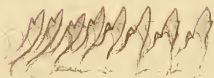
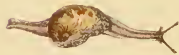
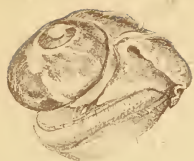


PLATE XLII.

[Part IV.—*September* 1883.]

VITRINA RUPPELLIANA, Pfr. Abyssinia.

- Fig. 1. Animal: right side,  $\times 2.4$ .  
2. Ditto: left side,  $\times 2.4$ .  
3. Ditto: from behind,  $\times 2.4$ .  
4. Generative organs,  $\times 4$ .  
5. Buccal mass, salivary gland, &c.,  $\times 4$ .  
6, 6 a, 6 b. Radula,  $\times 3.10$ .  
7. Jaw,  $\times 12$ .

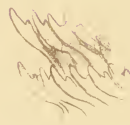
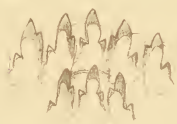
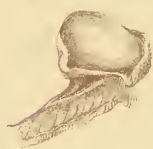
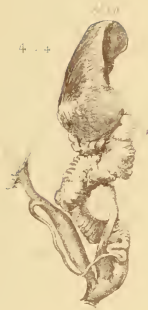


PLATE XLIII.

[Part V.—*June* 1884.]

- |  |                              |                       |
|--|------------------------------|-----------------------|
| Fig. 1, 1 <i>a</i> , 1 <i>b</i> , 1 <i>c</i> . | ALYCÆUS HEBES, Benson, × 7.  | Khasi Hill.           |
| 2, 2 <i>a</i> , 2 <i>b</i> .                   | —— NOTATUS, G.-A., × 7.      | Dafra Hills.          |
| 3, 3 <i>a</i> , 3 <i>b</i> , 3 <i>c</i> .      | —— DAMSANGENSIS, G.-A., × 7. | Western Bhutan Hills. |

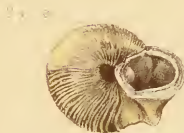
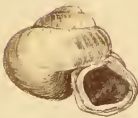




PLATE XLIV.

[Part V.—*June* 1884.]

Fig. 1, 1 *a*, 1 *b*, 1 *c*. *ALYCEUS INGRAMI*, W. T. Blf., × 2·4.

2, 2 *a*, 2 *b*, 2 *c*. — *UMBONALIS*, Bs., × 2·4.

3, 3 *a*, 3 *b*, 3 *c*. — *NAGAENSIS*, G.-A., × 2·4.

Tongoop, Arakan.

Kyook-toung, Pegu.

Asalu, North Cachar Hills.

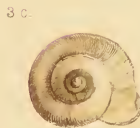
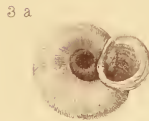
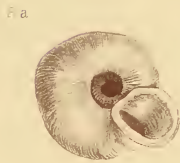
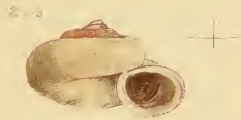
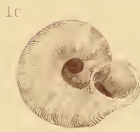
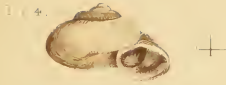


PLATE XLV.

[Part V.—June 1884.]

- |                      |   |                  |
|----------------------|---|------------------|
| Fig. 1, 1 <i>a</i> . | DIPLOMMATINA POLYPLEURIS, Bs., × 12.    | Khasi Hills.     |
| 2, 2 <i>a</i> .      | — AUSTENI, W. Blf., × 12.               | N. Khasi Hills.  |
| 3, 3 <i>a</i> .      | — SILVICOLA, G.-A., × 12.               | N. Cachar Hills. |
| 4, 4 <i>a</i> .      | — DAFLAENSIS, G.-A., × 7.               | Dafila Hills.    |
| 5, 5 <i>a</i> .      | — SILVICOLA, small var., × 12.          | N. Cachar Hills. |
| 6, 6 <i>a</i> .      | — SALTUENSE, G.-A., × 12.               | N. Cachar Hills. |
| 7, 7 <i>a</i> .      | — HUTTONI, Bs., × 12.                   | N.W. Himalaya.   |
| 7 <i>b</i> .         | Apex of ditto, × 20.                    |                  |
| 8, 8 <i>a</i> .      | DIPLOMMATINA OCCIDENTALIS, G.-A., × 12. | Trinidad.        |
| 8 <i>b</i> .         | Apex of ditto, × 20.                    | West Indies.     |



PLATE XLVI.

[Part V.—*June* 1884.]

- |                                   |                                     |                      |
|-----------------------------------|-------------------------------------|----------------------|
| Fig. 1, 1 <i>a</i> , 1 <i>b</i> . | DIPLOMMATINA GRACILIS, Bedd., × 12. | Vizagapatam, Madras. |
| 2, 2 <i>a</i> .                   | — GRACILIS, var., × 12.             | Vizagapatam, Madras. |
| 3, 3 <i>a</i> .                   | — CANARICA, Bedd., × 12.            | North Canara.        |
| 4, 4 <i>a</i> .                   | — PUPÆFORMIS, Theob., × 7.          | Shan States, Burmah. |
| 5, 5 <i>a</i> .                   | — SPERATA, W. T. Blf., × 7.         | Arakan.              |
| 6, 6 <i>a</i> .                   | — HENZADAENSIS, G.-A., × 12.        | Pegu.                |
| 7, 7 <i>a</i> .                   | — NICOBARICA, G.-A., × 12.          | Nicobar Islands.     |



PLATE XLVII.

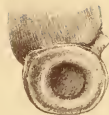
[Part V.—*June 1884.*]

- Fig. 1, 1 *a.* RAPHAULUS CHRYSALIS,  $\times 2\cdot4$ . Moulmain.  
 2. — ASSAMICA, G.-A.,  $\times 2\cdot4$ . Eastern Assam.  
 2 *a.* Ditto,  $\times 1\cdot6$ .  
 2 *b.* Ditto: front view of aperture,  $\times 2\cdot4$ .  
 3, 3 *a.* RAPHAULUS PACHYSIPHON,  $\times 2\cdot4$ . Moulmain.  
 4, 4 *a.* — BLANFORDI, Bs.,  $\times 2\cdot4$ . Eastern Himalaya.  
 4 *b.* Ditto: posterior termination of sutural tube,  $\times 12$ .  
 4 *c.* Ditto: operculum,  $\times 7$ .  
 5. Ditto, var. *a.* INTUBUS,  $\times 4$ . Daffa Hills; Eastern Himalaya.  
 5 *a.* Ditto, ditto: aperture, front view,  $\times 4$ .  
 6. Ditto, var.  $\beta$ . TUBULUS,  $\times 2\cdot4$ . Daffa Hills.  
 6 *a.* Ditto, ditto,  $\times 4$ .  
 7. Ditto, var.  $\gamma$ . TORTUOSUS,  $\times 4$ . Damsang Peak; Western Bhutan Hills.  
 8. Ditto, abnormal var.,  $\times 2\cdot4$ . Damsang.

1 x 4



1 a



6 x 4



6 a x 4



5 x 4



2 x 4



2 a x 6



2 b x 4



7 x 4



3 x 7



3 a



3 b x 4



5 x 4



4 x 8



4 a



4 b x 12



4 c x 7





PLATE XLVIII.

[Part V.—*June* 1884.]

- |  |                                |                   |
|--|--------------------------------|-------------------|
| Fig. 1, 1 <i>a</i> , 1 <i>b</i> , 1 <i>c</i> . | ALYCEUS CHENNELLI, G.-A., × 7. | Naga Hills.       |
| 2.   | — CHENNELLI, var.              | Lhota-Naga Hills. |
| 3.   | — BRAHMA, G.-A., × 7.          | Brahmakuud.       |
| 3 <i>a</i> , 3 <i>b</i> , 3 <i>c</i> .         | Ditto, × 4.                    |                   |
| 4, 4 <i>a</i> , 4 <i>b</i> , 4 <i>c</i> .      | ALYCEUS GEMMULA, Benson, × 7.  | Darjiling.        |
| 5, 5 <i>a</i> , 5 <i>b</i> , 5 <i>c</i> .      | — PACHITAENSIS, G.-A., × 7.    | Dafra Hills.      |

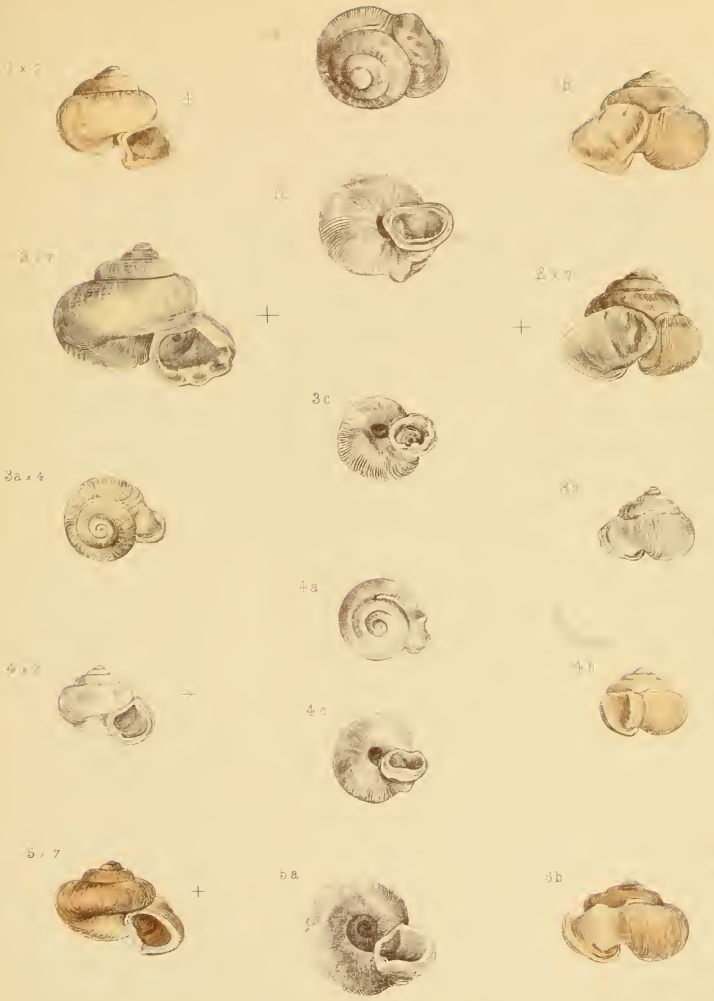


PLATE XLIX.

[Part V.—*June* 1884.]

Fig. 1.	DIPLOMMATINA EXILIS, W. Blf., × 12.	Ava.
2, 2 a.	— EXSERTA, Nev., × 12.	Moulmaiu.
3.	— AFFINIS, Theobald ?, × 12.	Upper Salwin valley.
4, 4 a, 4 b.	— CRISPATA, Stol., × 12.	Moulmain.
5, 5 a.	— ANGULATA, Theob. & Stol., × 12.	Moulmain.
6, 6 a.	— NANA, W. T. Blf., × 12 and 7.	Pegu.
7, 7 a.	— EDENTULA, G.-A., × 12.	Moulmain.
8, 8 a.	— CARNEOLA, Stol., × 12 and 7.	Moulmaiu.
9.	— PUPPENSIS, W. T. Blf., × 12.	Upper Burmah.
10, 10 a.	— BLANFORDIANA, Bs., × 7 and 12.	Darjiling Hills.
11, 11 a.	— THEOBALDI, n. sp., G.-A., × 12.	Darjiling.
12.	— FULLULA, Bs., × 12.	Darjiling.
13, 13 a.	— MINIMA, Bedd., × 20 and 12.	South India.



PLATE L.

[Part V.—June 1884.]

- Fig. 1. DIPLOMMATINA OLIGOPLEURIS, W. T. Blf. Teria Ghat. Drawn from life, creeping and at rest. Enlarged.
2. DIPLOMMATINA FOLLICULUS, Pfr. Mussoorie. The shell held in the hand, showing manner of protrusion of the rostrum and the various forms the animal assumes. Enlarged.
3. DIPLOMMATINA INSIGNIS, G.-A., × 12. Spirit-specimen.
4. — BLANFORDIANA, Bs., × 12. Ditto. Western Bhutan. *f*, foot; *o*, operculum; *s.m*, shell-muscle; *b.c*, branchial sac.
5. DIPLOMMATINA BLANFORDIANA, Bs., × 20. Portion of the head under slight pressure, showing:—*r*, radula; *b.p*, buccal plate; *t*, tentacle; *e*, eye; *o*, otolith?; *m*, mantle.
- 5 a. Ditto: portion of buccal plate, × 360.
- 5 b. Ditto: otoliths?, × 360.
6. DIPLOMMATINA INSIGNIS, G.-A.: portion of radula, × 360.
- 6 a. Ditto: ditto.
- 6 b. Ditto: central and lateral teeth of radula in different positions. Very much enlarged.
7. DIPLOMMATINA PACHYCHEILUS. Khasi Hills. Portion of the shell enlarged, showing the position of the operculum (*o*) and constriction (*c*) in the penultimate whorl, the internal parietal rib or lamella (*r*), and the columellar twist or tooth (*t*).
- 7 a. Ditto: ditto, another view.
- 7 b. Ditto: vertical section anterior to the operculum.
- 7 c. Ditto: horizontal section at the operculum, when withdrawn into shell to the full extent: the arrow shows the anterior side of same and direction towards the aperture; *col*, columella; rest of lettering same as above.
8. DIPLOMMATINA BLANFORDIANA, Bs., × 12. Darjiling. Showing similar construction. Front view.
- 8 a. Ditto. Ditto. Viewed from side.
9. DIPLOMMATINA INSIGNIS, G.-A.: operculum, × 20.



PLATE LI.

[Part V.—*June 1884.*]

- Fig. 1. *CYCLOPHORUS AURORA*, Bs., ♂, × 2.4. Animal from spirit-specimen. Dausang Peak, W. Bhutan Hills. *m*, the mantle drawn back, showing (*a.o*) the anal orifice and *p* the penis; *r*, the rostrum; *f*, sole of foot folded together; *s.m*, shell-muscle; *o*, operculum.
2. *CYCLOPHORUS AURORA*, Bs., ♀, × 2.4. Spirit-specimen. Animal withdrawn into the shell. Viewed from the outer side of the aperture. Greater portion of shell broken away, showing foot folded together. Same locality.
- 2 a. Ditto: ditto, × 2.4. Viewed from the right side.
- 2 b. Ditto: ditto, × 1.6. Viewed from the left side, showing form of the mantle and the branchial cavity (*b.c*).
- 2 c. Ditto: ditto, × 1.6. Viewed from the right side, to show the shell-muscle (*s.m*).
- 2 d. Ditto: ditto, × 1.6. The mantle cut and opened back to show the anal orifice and interior of the branchial cavity.
3. *ALYCÆUS NAGAENSIS*, G.-A., enlarged. Animal from spirit-specimen.
4. ——— *BICRENATUS*, G.-A. One row of the radula. Much enlarged.
5. ——— *BEMBEX*, Bs. Sutural tube (*t*) of the whorl of the shell broken away, to show the internal orifice of the same (*o.t*).
6. *ALYCÆUS NAGAENSIS*, G.-A., × 7. The outer right margin of the shell broken away, to show the sutural tube (*t*) in the internal orifice of the same (*o.t*).
- 6 a. Diagrammatic section of the frontal edge of the mantle (*m*) in *ALYCÆUS*, by which the sutural tube is formed.
7. *RAPHAULUS BLANFORDI*, Bs., enlarged. Animal removed from shell, showing the sutural or branchial tube (*t*).
8. Ditto, × 7. Shell with margin broken away, to show the internal orifice (*o.t*) of the sutural tube (*t*), extending forward to the peristome.
9. *RAPHAULUS BLANFORDI*, Bs., × 20. A portion of the shell near suture, to show the internal sutural tube (*t*) and the external sutural tube (*t'*), corresponding to that in fig. 7.
- 9 a. Diagrammatic section of the same across the front edge of the mantle (*m*), to illustrate the formation of the internal and external sutural tubes (*t, t'*).

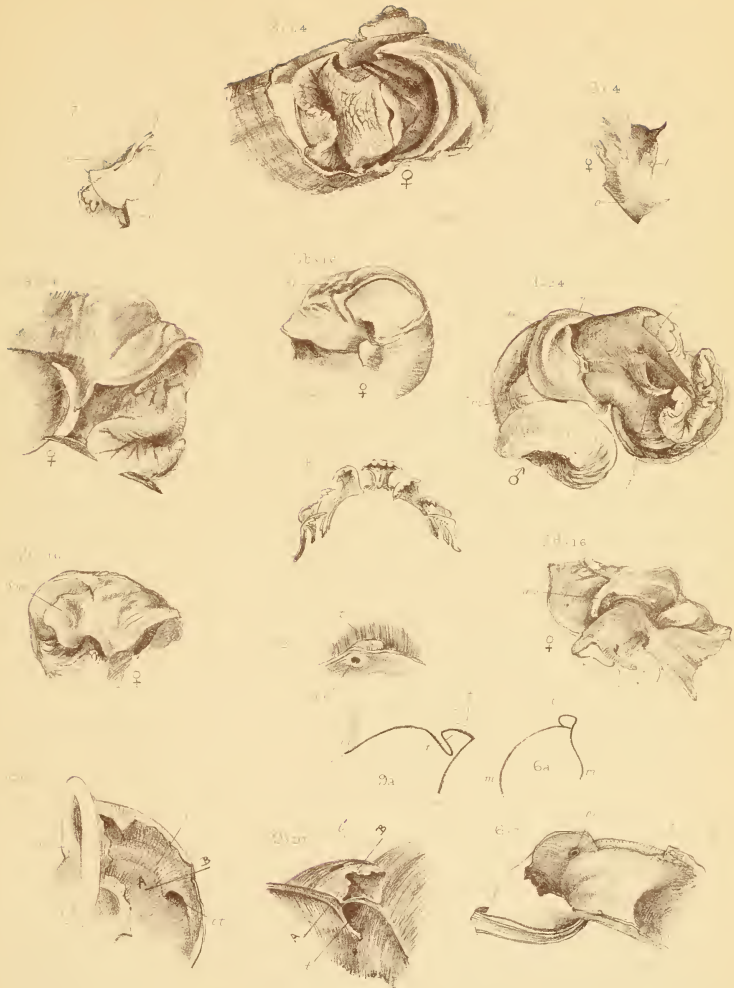


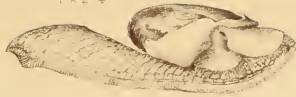


PLATE LII.

[Part VI.—*September* 1887.]

- Fig. 1, 1 *a*. *AUSTENIA SCUTELLA*, Bs.,  $\times 2.4$ . Murree, Punjab. Animal viewed from right and left sides.
- 1 *b*. Ditto: the extremity of foot viewed from behind,  $\times 4$ .
- 1 *c*, 1 *d*. Ditto: shell,  $\times 2.4$ . Chinab valley.
- 1 *e*. Ditto: shell, natural size. Chinab valley.
- 2, 2 *a*. *AUSTENIA*? *MONTICOLA*, Bs., natural size. Mussoorie, N.W. Himalaya.
- 3, 3 *a*. — ? *STOLICZKANUS*, Nevill,  $\times 1.6$ . Almorah, N.W. Himalaya.
- 3 *b*. — — —, natural size.
- 4, 4 *a*. — ? *SERAHANENSIS*, G.-A.,  $\times 1.6$ . Sutlej Valley, N.W. Himalaya.
- 4 *b*. — — —, natural size.
- 5, 5 *a*. — ? *THEOBALDI*, G.-A.,  $\times 1.6$ . Bichlari, Chinab Valley, N.W. Himalaya.
- 5 *b*. — — —, natural size. Bichlari, Chinab Valley, N.W. Himalaya.

1 x 2 4



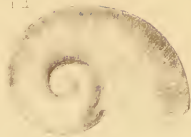
1 b x 2 4



1 c nat size



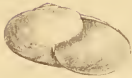
1 d



1 a



2 nat size



1 b 4



2 a



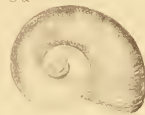
3 1 2



3 b nat size



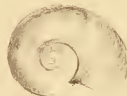
3 a



4 x 2 4



4 a



4 b nat size



5 a 1 2



5 b nat size



5 a







PLATE LIII.

[Part VI.—*September* 1887.]

- |              |  |                                    |
|--------------|--|------------------------------------|
| Fig. 1.      | MACROCHLAMYS ? CONSEPTA, Benson, × 24. | Moulmain, Tenasserim.              |
| 2.           | — WOODMASONI, Nevill, MS., × 4         | Little Coco Island, Bay of Bengal. |
| 3.           | — HEPATIZON, G.-A., × 24.              | Habiang, S.W. Khasi.               |
| 4, 4 a, 4 b. | — —, × 24.                             | Dafra Hills.                       |
| 5.           | — FATANE, × 4.                         | Darjiling.                         |
| 6.           | — PETASUS, Bs., × 4.                   | Phie Than, Tenasserim.             |
| 7.           | — SUBPETASUS, G.-A., × 4.              | Arakan.                            |
| 8, 8 a.      | — LATUS, G.-A., × 24.                  | Teria Ghat, Khasi.                 |

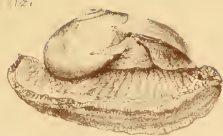


PLATE LIV.

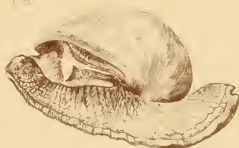
[Part VI.—*September 1887.*]

- Fig. 1.      *MACROCHLAMYS FLEMINGI*, Pfr. Murrec. Right side. From spirit-specimen,  
                natural size.
- 1 *a.*      Ditto: left side.
- 1 *b.*      Ditto: posterior view of the mucous gland,  $\times 4$ .
- 1 *c.*      Ditto: the head, showing position of the generative orifice and the groove running  
                back from it, under the mantle-lobes.
- 1 *d*, 1 *e.*    Ditto: shell, natural size.
- 2, 2 *a.*    *MACROCHLAMYS ALTIVAGUS*, Theob., natural size. Uri, Kashmir.
- 3, 3 *a.*    — *CASSIDA*, Bs., natural size. Kashmir.
4.        — *AUSTENIANUS*, Nevill, natural size. Souamurg, Kashmir.
- 4 *a*, 4 *b.*    Ditto,  $\times 2\cdot4$ .

1 nat. size.



1 a



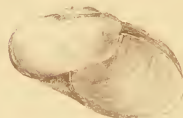
1 b . 4



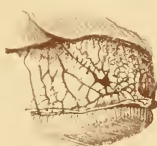
15 magnified



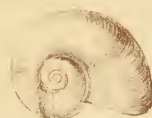
1 c



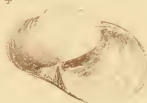
1 c . r . 4



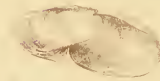
2 nat. size



4 a . 2 4



2 c



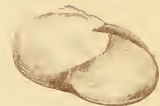
3 nat. size



4 m . 1



3 c



4 b x 2 4









PLATE LVI.

[Part VI.—*September* 1887.]

- Fig. 1. GIRASIA MAGNIFICA, Nev. & G.-A., natural size. Momein, Yunnan. View of right side.
2. Ditto: viewed from above, showing the cicatricial junction of the right and left shell-lobes (*c*).
3. Ditto: view of left side.
4. Ditto: viewed from behind.
- 5, 5 *a*. Shell, natural size. Copied from J. A. S. B. 1881, plate v. Drawn and lithographed by Jules Schaumburg, Calcutta.

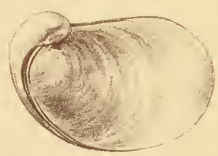
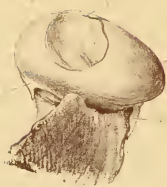


PLATE LVII.

[Part VI.—September 1887.]

- Fig. 1.    *AFRICARION ATER*, G.-A. Travancore and Tinevelley Hills, S. India. View of right side,  $\times 2.4$ . Shell removed.
- 1 *a.*    Ditto: view of dorsal side,  $\times 2.4$ .
- 1 *b.*    Ditto: view of left side, position internally of the muscle-attachment of the retractor penis (*m*),  $\times 2.4$ .
- 1 *c.*    Ditto: portion of sole of foot,  $\times 2.4$ .
- 2, 2 *a.*    Shell, from above and below,  $\times 2.4$ .
- 2 *b.*    Ditto: natural size.
3.    *AFRICARION ATER*, var. *ATERRIMUS*, natural size.
- 3 *a.*    Ditto: viewed from behind,  $\times 2.4$ .
- 3 *b.*    Ditto: sole of foot, anterior portion,  $\times 2.4$ .
- 3 *c.*    Ditto: jaw,  $\times 12$ .
- 4, 4 *a.*    Ditto: shell,  $\times 4$ . Showing the membranaceous peristome (*p*).
5.    Ditto: generative organs of var. *ATERRIMA*,  $\times 2.4$ .
- 5 *a.*    Ditto: male organ of *ATER*,  $\times 4$ . Showing the spermatophore in process of formation (*s*).
6.    *AFRICARION ATER*, var. *CINEREUS*, natural size.
7.    Shell of *AFRICARION AURIFORMIS*, Blf.,  $\times 2.4$ . Sispara Ghat, Nilgiri Hills.
- 7 *a.*    Ditto: natural size.



PLATE LVIII.

[Part VI.—*September* 1887.]

- Fig. 1, 1 *a*, 1 *b*. GIRASIA (DEKHANIA) BEDDOMEI, G.-A., natural size. Travancore Hills.  
Viewed from above and on the right and left sides. From spirit-specimen.
- 2, 2 *a*, 2 *b*. Shell of ditto,  $\times 2\cdot4$ .
3. Ditto, young,  $\times 2\cdot4$ .
- 4, 4 *a*. GIRASIA BEDDOMEI, var. MACULOSA, natural size. Viewed from above and  
right side.
5. Ditto, var. NIGRA, natural size. View of right side.
- 6, 6 *a*, 6 *b*. Ditto, var., natural size. Viewed from above and on right and left sides.



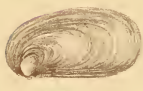
11

12



15

16



20



22

23



26

27



29



32

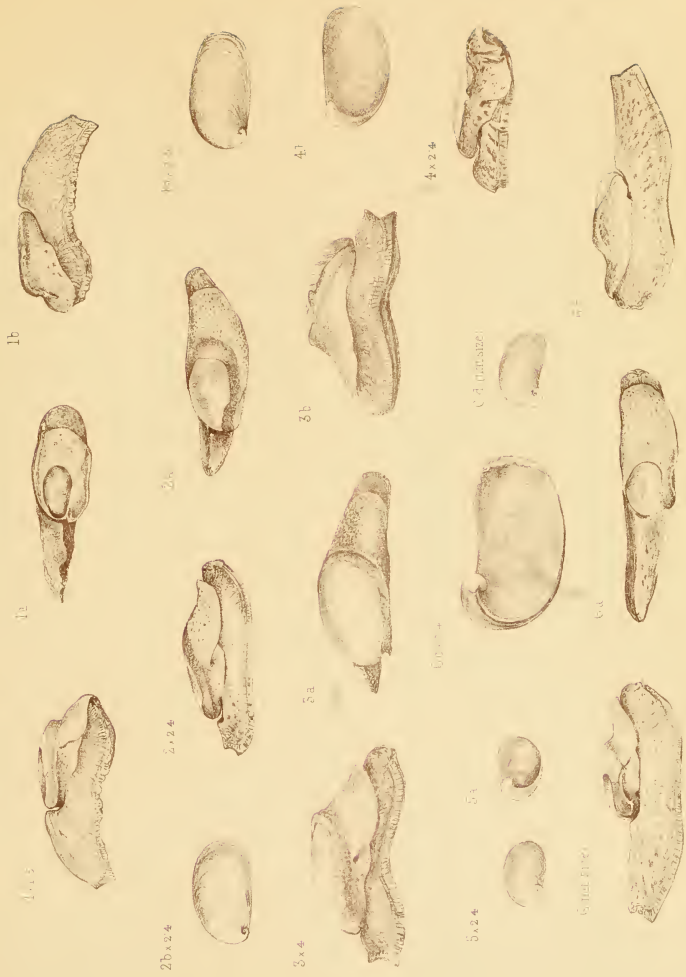




PLATE LIX.

[Part VI.—September 1887.]

- Fig. 1, 1 *a*, 1 *b*. GIRASIA PUNKABARIENSIS, G.-A.: animal,  $\times 1.5$ . Viewed from right side, above, and left side respectively.
- 2, 2 *a*.<sup>4</sup> — (IBYCUS) SIKIMENSIS, G.-A.: animal,  $\times 2.4$ . Viewed from right side and above.
- 2 *b*. Shell of ditto,  $\times 2.4$ .
- 3, 3 *a*, 3 *b*. GIRASIA (IBYCUS) SIKIMENSIS, var. MAINWARINGI, Nevill, MS.: animal,  $\times 4$ .
4. — (—) CACHARICA, G.-A.: animal,  $\times 2.4$ .
- 4 *a*, 4 *b*. Shell of ditto,  $\times 2.4$ .
- 5, 5 *a*. AUSTENIA? VENUSTA, Theobald,  $\times 2.4$ .
- 6, 6 *a*, 6 *b*. GIRASIA PEGUENSIS, Theobald: animal, natural size. Viewed from right side, above, and left side.
- 6 *c*. Shell of ditto,  $\times 2.4$ .
- 6 *d*. Ditto, natural size.





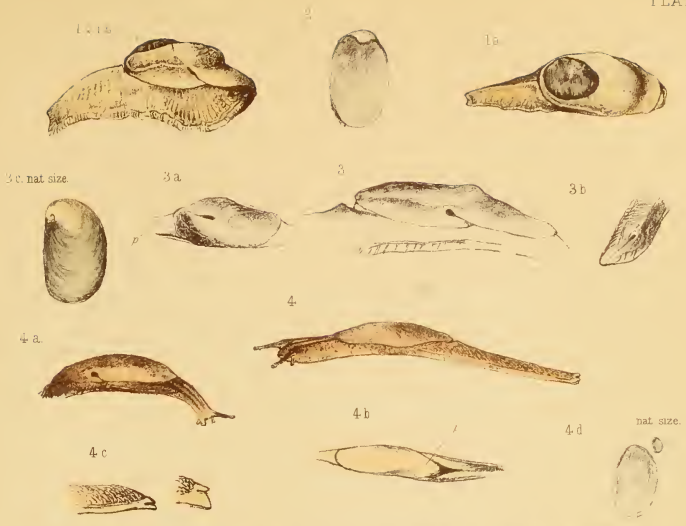


PLATE LXII.

[Part VI.—*September 1887.*]

- Fig. 1. *GIRASIA HOOKERI*, Gray: central, no. 34, 35, 36, and outermost lateral teeth of odontophore,  $\times 185$ ; 1 *a*, jaw, enlarged.
2. — *MAGNIFICUS*, Nevill: central and lateral teeth,  $\times 185$ .
  3. — *RADHA*, G.-A.: central, median, and lateral teeth,  $\times 185$ ; 3 *a*, jaw,  $\times 12$ ; 3 *b*, generative organs, enlarged. Lettering as in former Plates.
  4. — *DALHOUSLE*, G.-A.: central, nos. 12–16, and outer lateral teeth,  $\times 185$ ; 4 *a*, jaw,  $\times 12$ .
  5. — (*IBYCUS*) *CACHARICA*, G.-A.: median teeth, 12–15, and the outermost laterals; 5 *a*, jaw,  $\times 12$ ; 5 *b*, the basal end of the amatorial organ,  $\times 12$ ; 5 *c*, part of the generative organs.
  6. — *CROCEA*, G.-A.: central, median, and some of the lateral teeth,  $\times 185$ .
  7. *DEKHANIA BEDDOMEI*, G.-A.: central, lateral, and outermost laterals,  $\times 185$ ; 7 *a*, jaw,  $\times 4$ .
  8. *AUSTENIA GIGAS*, BENSON: central, median, and lateral teeth,  $\times 185$ ; 8 *a*, jaw,  $\times 4$ .



# INDEX.

## A.

### AFRICARION, 154-158, 244-246.

- Africarion *ater*, Figs. 1 & 2, Pl. LVII., Part VI., 244.  
— *ater*, var. *aterrimus*, Fig. 3, Pl. LVII., Part VI., 245; Fig. 5, Pl. LVII., Part VI., 245.  
— —, var. *castaneus*, Part VI., 245.  
— —, var. *cineus*, Fig. 6, Pl. LVII., Part VI., 245.  
— *auriformis*, Fig. 7, Pl. LVII., Part VI., 245.  
— *pallens*?, Part IV., 154, 156.

### ALYCÆUS, 186-196.

- Alycæus *bembex*, Fig. 5, Pl. LI., Part V., 188.  
— *bicrenatus*, Fig. 4, Pl. LI., Part V., 188.  
— *brahma*, Fig. 3, Pl. XLVIII., Part V., 195.  
— *chennelli*, Fig. 1, Pl. XLVIII., Part V., 192.  
— *damsaugensis*, Fig. 3, Pl. XLIII., Part V., 192.  
— *gemmula*, Fig. 4, Pl. XLVIII., Part V., 190.  
— *hebes*, Fig. 1, Pl. XLIII., Part V., 191.  
— *ingrami*, Fig. 1, Pl. XLIV., Part V., 193.  
— *nagaensis*, Fig. 3, Pl. XLIV., Part V., 195; Fig. 3, Pl. LI., Part V., 195.  
— *notatus*, Fig. 2, Pl. XLIII., Part V., 191.  
— *pachitacensis*, Fig. 5, Pl. XLVIII., Part V., 190.  
— *umbonalis*, Fig. 2, Pl. XLIV., Part V., 194.

### ANADENUS, 46-55.

- Anadenus *altivagus*, Figs. 1-7, Pl. VI., Part II., 48; Fig. 1, Pl. VII., Part II., 49.  
— *jerdoni*, Fig. 7, Pl. VII., Part II., 52.  
— *schlagintweitii*, Fig. 3, Pl. VII., Part II., 51.

### ARION, 62.

- Arion *ater*, Fig. 9, Pl. XII., Part II., 62.

### ARIOPHANTA, 132-142.

- Ariophanta *immerita*, Fig. 1, Pl. XXXIII., Part IV., 135.  
— *interrupta*, Fig. 2, Pl. XXXIV., Part IV., 134.  
— *lavipes*, Fig. 7, Pl. XXXIII., Part IV., 133; Fig. 1, Pl. XXXIV., Part IV., 133.

*Ariophanta laidlayana*, Fig. 3, Pl. XXXIV., Part IV., 140.

— ? *retrorsa*, Fig. 4, Pl. XXXIV., Part IV., 137.

AUSTENIA, 148-154, 228-238.

*Austenia bensoni*, Fig. 2, Pl. XXXVIII., Part IV., 150; Fig. 6, Pl. XXXVI., Part IV., 150.

— —, var. *syllhetensis*, Fig. 3, Pl. XXXVIII., Part IV., 151.

— *gigas*, Fig. 3, Pl. LV., Part VI., 228; Fig. 1, Pl. LX., Part VI., 228;

Fig. 8, Pl. LXII., Part VI., 228.

— *globosa*, Fig. 5, Pl. XXXVII., Part IV., 153.

— *monticola*, Fig. 2, Pl. LII., Part VI., 234.

— *punchetensis*, Fig. 3, Pl. XXXVII., Part IV., 153.

— *papillaspira*, Fig. 4, Pl. XXXVII., Part IV., 153.

— *planospira*, Fig. 1, Pl. XXXVIII., Part IV., 149.

— *salia*, Fig. 1, Pl. XXXVII., Part IV., 152.

— *scutella*, Fig. 1, Pl. LII., Part VI., 232.

— ? *serahanensis*, Fig. 4, Pl. LII., Part VI., 237.

— *stoliczkanus*, Fig. 3, Pl. LII., Part VI., 236.

— *theobaldi*, Fig. 5, Pl. LII., Part VI., 236.

— ? *venusta*, Fig. 5, Pl. LIX., Part VI., 237.

**B.**

BENSONIA, 247.

*Bensonia labiata*, Fig. 12, Pl. XXI., Part III., 247.

— *monticola*, Fig. 11, Pl. XXI., Part III., 248.

**C.**

CRYPTOSOMA, 14-17.

*Cryptosoma prestans*, Fig. 1, Pl. IV., Part I., 14.

CYCLOPHORUS, 165.

*Cyclophorus aurora*, Fig. 1, Pl. LI., Part V.

**D.**

DEKHANIA, 242.

*Dekhanianella beddomei*, Figs. 1, 2, 3, Pl. LXII., Part VI., 243.

— —, var. *maculosa*, Figs. 4, 6, Pl. LVIII., Part VI., 243.

— —, var. *nigra*, Fig. 5, Pl. LVIII., Part VI., 243.

DIPLOMMATINA, 166-185.

*Diplommata affinis*?, Fig. 3, Pl. XLIX., Part V., 181.

— *angulata*, Fig. 5, Pl. XLIX., Part V., 184.

— *austeni*, Fig. 2, Pl. XLV., Part V., 177.

— *blanfordiana*, Fig. 10, Pl. XLIX., Part V., 169; Fig. 4, Pl. L., Part V., 169.



INDEX.

- Diplommatina canarica*, Fig. 3, Pl. XLVI., Part V., 175.  
 — *caracola*, Fig. 8, Pl. XLIX., Part V., 183.  
 — *crispata*, Fig. 4, Pl. XLIX., Part V., 183.  
 — *dafluensis*, Fig. 4, Pl. XLV., Part V., 174.  
 — *edentula*, Fig. 7, Pl. XLIX., Part V., 185.  
 — *exilis*, Fig. 1, Pl. XLIX., Part V., 180.  
 — *exserta*, Fig. 2, Pl. XLIX., Part V., p. 184.  
 — *folliculus*, Fig. 2, Pl. L., Part V., 167.  
 — *gracilis*, Fig. 1, Pl. XLVI., Part V., 175.  
 — *henzadaensis*, Fig. 6, Pl. XLVI., Part V., 179.  
 — *huttoni*, Fig. 7, Pl. XLV., Part V., 170.  
 — *insignis*, Fig. 3, Pl. L., Part V., 169.  
 — *minima*, Fig. 13, Pl. XLIX., Part V., 176.  
 — *nana*, Fig. 6, Pl. XLIX., Part V., 181.  
 — *nicobarica*, Fig. 7, Pl. XLVI., Part V., 185.  
 — *occidentalis*, Fig. 8, Pl. XLV., Part V., 173.  
 — *olivopleuris*, Fig. 1, Pl. L., Part V.  
 — *pachycheilus*, Fig. 7, Pl. L., Part V., 168.  
 — *polypleuris*, Fig. 1, Pl. XLV., Part V., 176.  
 — *pullula*, Fig. 12, Pl. XLIX., Part V., 170.  
 — *pupaformis*, Fig. 4, Pl. XLVI., Part V., 182.  
 — *puppensis*, Fig. 9, Pl. XLIX., Part V., 180.  
 — *saltuense*, Fig. 6, Pl. XLV., Part V., 178.  
 — *silvicola*, Fig. 3, Pl. XLV., Part V., 178.  
 — *sperata*, Fig. 5, Pl. XLVI., Part V., 179.  
 — *theobaldi*, Fig. 11, Pl. XLIX., Part V.

DURGELLA, 142-145.

- Durgella khasiaca*, Fig. 7, Pl. XXXIX., Part IV., 145.  
 — *minuta*, Fig. 1, Pl. XXXIX., Part IV., 144.

G.

GEOMALACUS, 60-63.

- Geomalacus maculosus*, Figs. 1-8, Pl. XII., Part II., 61.

GIRASIA, 216-228.

- Girasia* (Dekhanian) *beddomci*, Figs. 1, 2, 3, Pl. LVIII., Part VI., 243.  
 — —, var. *maculosa*, Figs. 4, 6, Pl. LVIII., Part VI., 243.  
 — —, var. *nigra*, Fig. 5, Pl. LVIII., Part VI., 243.  
 — *bartii*, Fig. 2, Pl. LXI., Part VI., 222.  
 — *butteri*, Fig. 7, Pl. LX., Part VI., 226.  
 — (Ibycus) *eucharica*, Fig. 5, Pl. LXII., Part VI., 240.  
 — (—) *cinerea*, Fig. 8, Pl. LX., Part VI., 241.  
 — *crocea*, Fig. 2, Pl. LX., Part VI., 223; Fig. 6, Pl. LXII., Part VI., 223.  
 — *dalthousie*, Fig. 1, Pl. LXI., Part VI., 224; Fig. 4, Pl. LXII., Part VI., 224.

- Girasia hookeri*, Fig. 1, Pl. LV., Part VI., 219; Fig. 1, Pl. LXII., Part VI., 219.  
 ———, var., Fig. 5, Pl. LX., Part VI., 221.  
 ———, var. *brunea*, Fig. 3, Pl. LX., Part VI., 220.  
 ——— *magnifica*, Fig. 1, Pl. LVI., Part VI., 225; Fig. 2, Pl. LXII., Part VI.  
 ——— *nagansis*, Fig. 3, Pl. LXI., Part VI., 224.  
 ——— *peguensis*, Fig. 6, Pl. LIX., Part VI., 227.  
 ——— *paukabariensis*, Fig. 1, Pl. LIX., Part VI., 225.  
 ——— *radha*, Fig. 6, Pl. LX., Part VI., 222; Fig. 3, Pl. LXII., Part VI., 222.  
 ——— *rubra*, Fig. 4, Pl. LXI., Part VI., 228.  
 ——— (Ibyeus) *sikkimensis*, Fig. 2, Pl. LIX., Part VI., 239.  
 ——— (——) ———, var. *mainwaringi*, Fig. 3, Pl. LIX., Part VI., 240.  
 ——— (——?) *solida*, Part VI., 241.

## H.

## HELICARION, 146, 147.

- Helicaron cuvieri*, Fig. 9, Pl. XLI., Part IV., 146.  
 ——— *helena*, Fig. 1, Pl. XLI., Part IV., 146.

## HELIX, 45, 73.

- Helix* ? (——?) *glomerosa*, Fig. 9, Pl. XIV., Part III., 73.  
 ———? (*Sagdinella*) *didrichsenii*, Figs. 1, 1 a, Pl. IX., Part II., 45, = young of  
*Pupina nicobarica*.

## HYALIMAX, 55-60.

- Hyalimax* (Jarava) *andamanica*, Figs. 1-9, Pl. XI., Part II., 57.  
 ——— (——) *reinhardi*, Part II., 59.  
 ——— (——) *viridis*, Part II., 60.  
 ——— *perlucidus*, Fig. 10, Pl. XI., Part II., 55.

## I.

## IBYCUS, 238-241.

- Ibyeus sikkimensis*, Fig. 2, Pl. LIX., Part VI., 239.  
 ———, var. *mainwaringi*, Fig. 3, Pl. LIX., Part VI., 240.  
 ——— *eacharica*, Fig. 4, Pl. LIX.; Fig. 5, Pl. LXII., Part VI., 240.  
 ———? *cinerea*, Fig. 8, Pl. LX., Part VI., 241.  
 ———? *solida*, Part VI., 241.

## K.

## KALIELLA, 1-10, 19-24, 68-73, 146.

- Kaliella animula*, Fig. 1, Pl. V., Part II., 23.  
 ——— *aspirans*, Fig. 12, Pl. I., Part I., 6.  
 ——— *barrakporensis*, Fig. 1, Pl. I., Part I., 2; Fig. 1, Pl. II., Part I., 3; Fig. 3,  
 Pl. V., Part II., 19; Fig. 5, Pl. XXXVIII., Part IV., 146.  
 ——— *bullata*, Fig. 4, Pl. V., Part II., 23.

- Kaliella? burrailensis*, Fig. 5, Pl. XV., Part III., 70.  
 ———? *chemelli*, Fig. 1, Pl. XVI., Part III., 73.  
 ——— *cherracensis*, Fig. 5, Pl. I., Part I., 4; Fig. 2, Pl. II., Part I., 4.  
 ———? *conulus*, Fig. 6, Pl. XV., Part III., 71.  
 ——— *costulata*, Fig. 5, Pl. II., Part I., 7.  
 ———? *dikrangensis*, Fig. 3, Pl. XVI., Part III., 72.  
 ——— *clongata*, Fig. 9, Pl. II., Part I., 9.  
 ——— *fastigiata*, Fig. 8, Pl. II., Part I., 8, 21.  
 ——— *flatura*, Fig. 10, Pl. V., Part II., 23.  
 ——— *gratiosa*, Fig. 10, Pl. II., Part I., 9.  
 ——— *jaintiaca*, Fig. 4, Pl. II., Part I., 7.  
 ——— *kezamaensis*, Fig. 3, Pl. XV., Part III., 69; Figs. 10 & 11, Pl. XL., Part IV., 146 (*Macrochlamys* is an error in description of Plate).  
 ——— *khasiaca*, Fig. 8, Pl. I., Part I., 5.  
 ——— *lailangkotensis*, Fig. 1, Pl. XV., Part III., 68; Fig. 2, Pl. XX., Part III., 69 (*Macrochlamys* is an error in description of Plate).  
 ———? *leithiana*, Fig. 6, Pl. XVI., Part III., 71.  
 ——— *lhoataensis*, Fig. 2, Pl. V., Part II., 22.  
 ——— *muniiperensis*, Fig. 9, Pl. I., Part I., 5; Fig. 3, Pl. II., Part I., 5.  
 ——— *nagaensis*, Fig. 11, Pl. II., Part I., 9.  
 ——— *nana*, Fig. 6, Pl. V., Part II., 21.  
 ———? *nevilli*, Fig. 6, Pl. XIII., Part III., 70.  
 ———? *nongsticauensis*, Fig. 2, Pl. XVI., Part III., 72.  
 ——— *perakensis*, Fig. 7, Pl. II., Part I., 8.  
 ——— *resinula*, Fig. 7, Pl. V., Part II., 22.  
 ———? *ruga*, Fig. 4, Pl. XV., Part III., 70.  
 ——— *sigurensis*, Fig. 11, Pl. I., Part I., 5.  
 ——— *sikkimensis*, Fig. 9, Pl. V., Part II., 22.  
 ——— *sivalensis*, Fig. 3, Pl. I., Part I., 3.  
 ——— *subcostulata*, Fig. 6, Pl. II., Part I., 8.  
 ——— *teriacensis*, Fig. 12, Pl. II., Part I., 10.  
 ———? *tirutana*, Fig. 4, Pl. XVI., Part III., 73.  
 ——— *vulcani*, Fig. 13, Pl. I., Part I., 6.

## L.

LIMAX, 62.

- Limax agrestis*, Fig. 10, Pl. XII., Part II., 62.

## M.

MACROCHLAMYS, 76, 97-122, 209-215.

- Macrochlamys altivagus*, Fig. 2, Pl. LIV., Part VI., 213.  
 ———? *anowr*, Fig. 8, Pl. XIV., Part III., 91.  
 ——— *atricolor*, Fig. 1, Pl. XXIV., Part IV., 113-117; Figs. 1-8, Pl. XXV., Part IV., 113-117; Fig. 1, Pl. XXVII., Part IV., 113-117.

- Macrochlamys austriacanus*, Fig. 4, Pl. LIV., Part VI., 215.  
 — *cacharica*, Fig. 2, Pl. XXVII., Part IV., 117.  
 — —, var. *glauca*, Fig. 6, Pl. XXIV., Part IV., 118.  
 — *cassida*, Fig. 3, Pl. LIV., Part VI., 214.  
 — *castaneo-labiata*, Fig. 7, Pl. XXI., Part III., 119–121; Fig. 1, Pl. XXIX., Part IV., 119–121.  
 — *chointa*, Fig. 6, Pl. XXII., Part IV., 102.  
 — ? *concepta*, Fig. 4, Pl. XXVI., Part IV., 110; Fig. 1, Pl. LIII., Part VI., 209.  
 — *daflacensis*, Fig. 6, Pl. XXI., Part III.  
 — *dalingensis*, Figs. 1–10, Pl. XXXV., Part IV., 121.  
 — *daxjilingensis*, Fig. 11, Pl. XVII., Part III., 88.  
 — *decussata*, Fig. 6, Pl. XIX., Part III.; Fig. 15, Pl. XXI., Part III.  
 — *dorani*, Fig. 8, Pl. XVII., Part III., 87.  
 — *enata*, Fig. 11, Pl. XIV., Part III., 91.  
 — *exul*, Fig. 3, Pl. XXII., Part IV., 103.  
 — *facta*, Fig. 7, Pl. XIV., Part III., 90.  
 — *flamingi*, Fig. 1, Pl. LIV., Part VI., 212.  
 — *hardwickei*, Fig. 10, Pl. XXI., Part III.; Figs. 1 & 2, Pl. XXIII., Part IV., 105, 106.  
 — —, var. *politulus*, Fig. 3, Pl. XXIII., Part IV., 107.  
 — ? *hepatizon*, Fig. 3, Pl. LIII., Part VI., 209, 210.  
 — *honesta*, Fig. 7, Pl. XIX., Part III.  
 — *indica*, Fig. 1, Pl. XXI., Part III., 97; Figs. 1–8, Pl. XVIII., Part III., 97; Fig. 9, Pl. XXV., Part IV.  
 — *jainiana*, Fig. 7, Pl. XXVI., Part IV., 111, 112; Fig. 2, Pl. XXVIII., Part IV., 111, 112.  
 — *kala*, Figs. 1–9, Pl. XL., Part IV., 108.  
 — *kandiensis*, Fig. 2, Pl. XIV., Part III., 90.  
 — *kolliensis*, Fig. 6, Pl. XVII., Part III., 86; Fig. 5, Pl. XXVI., Part IV., 119; Fig. 3, Pl. XXVIII., Part IV., 119.  
 — ? *latus*, Fig. 7, Pl. LIII., Part VI., 209.  
 — *lecythis*, Fig. 5, Pl. XIX., Part III.  
 — *lhotuensis*, Fig. 5, Pl. XXIII., Part IV., 107.  
 — *longicauda*, Fig. 1, Pl. XVII., Part III., 84; Fig. 1, Pl. XX., Part III., 85; Fig. 16, Pl. XXI., Part III., 85.  
 — ? *lubrica*, Fig. 7, Pl. XXIV., Part IV., 118.  
 — ? (near) *lubrica*, Fig. 4, Pl. XXI., Part III.  
 — *masuricensis*, G.-A., MS., = *prona*, Fig. 8, Pl. XXI., Part III., 103.  
 — *molecula*, Fig. 8, Pl. XVI., Part III., 88.  
 — *neogloensis*, Fig. 3, Pl. XVII., Part III., 86.  
 — *opiparus*, Fig. 6, Pl. XXIII., Part IV., 108.  
 — *originaria*, Fig. 12, Pl. XIV., Part III., 91.  
 — *pacata*, Fig. 10, Pl. XIV., Part III., 90.

INDEX.

- Macrochlamys? patane*, Fig. 4, Pl. LIII., Part VI., 210.  
 — ? *pedina*, Fig. 13, Pl. XXI., Part III.  
 — *perpavla*, Fig. 5, Pl. XIV., Part III., 89.  
 — *perplana*, Fig. 4, Pl. XIX., Part III.  
 — ? *pibus*, Fig. 5, Pl. LIII., Part VI., 210.  
 — *petrosa*, Fig. 1, Pl. XIX., Part III., 99; Fig. 2, Pl. XXI., Part III., 99.  
     Fig. 1, Pl. XXII., Part IV.  
 — *planiuscula*, Fig. 7, Pl. XVI., Part III., 88.  
 — ? *politissima*, Fig. 6, Pl. XXVI., Part IV., 112.  
 — *poongee*, Fig. 1, Pl. XIV., Part III., 90.  
 — *prona*, Fig. 2, Pl. XXII., Part IV., 103.  
 — ? *resplendens*, Fig. 1, Pl. XXVI., Part IV., 109, 110.  
 — *roberti*, Fig. 7, Pl. XVII., Part III., 87.  
 — *rusticula*, Fig. 10, Pl. XVII., Part III., 87.  
 — *sata*, Fig. 13, Pl. XIV., Part III., 91.  
 — *shenjorensis*, Fig. 5, Pl. XXII., Part IV., 102.  
 — *sikrigulliensis?*, Fig. 3, Pl. XIX., Part III.  
 — *splendens*, Fig. 3, Pl. XXI., Part III., 100; Fig. 4, Pl. XXII., Part IV.  
 — *staffordi*, Fig. 14, Pl. XXI., Part III.  
 — ? *subpetasus*, Fig. 6, Pl. LIII., Part VI.  
 — *sythetensis*, Fig. 9, Pl. XXI., Part III.  
 — *tanirensis*, Fig. 9, Pl. XVII., Part III., 87.  
 — *testrina*, Fig. 17, Pl. XXI., Part III.  
 — *tugurium*, Fig. 2, Pl. XIX., Part III.; Fig. 3, Pl. XX., Part III.  
 — *umbaticola*, Fig. 4, Pl. XIV., Part III., 89.  
 — ? *woodmasoni*, Fig. 2, Pl. LIII., Part VI., 209.

MICROCYSTINA, 11-14.

- Microcystina cryptomphalus*, Fig. 10, Pl. III., Part I., 13.  
 — *harrietensis*, Fig. 11, Pl. III., Part I., 13.  
 — *maerchiana*, Fig. 9, Pl. III., Part I., 13.  
 — *rinkii*, Fig. 1, Pl. III., Part I., 12.  
 — *warnefordi*, Fig. 8, Pl. III., Part I., 13.

O.

OXYTES, 123-131.

- Oxytes cycloptax*, Fig. 1, Pl. XXXI., Part IV., 125.  
 — (*Bensonia labiata*), Fig. 5, Pl. LXI., Part VI., 247.  
 — *orobia*, Fig. 1, Pl. XXXII., Part IV., 129.  
 — *oxytes*, Fig. 1, Pl. XXX., Part IV., 124.

R.

RAPHAULUS, 196-202.

- Raphaulus assamica*, Fig. 2, Pl. XLVII., Part V., 201.  
 — *blanfordi*, Fig. 4, Pl. XLVII., Part V., 202; Fig. 7, Pl. LI., Part V.  
 — —, var. *intubus*, Fig. 5, Pl. XLVII., Part V., 202.

- Raphaulus blaxfordi*, var. *tortuosus*, Fig. 7, Pl. XLVII., Part V., 202.  
 ———, var. *tubulus*, Fig. 6, Pl. XLVII., Part V., 202.  
 ——— *chrysalis*, Fig. 1, Pl. XLVII., Part V., 200.  
 ——— *pachysiphon*, Fig. 3, Pl. XLVII., Part V., 200.

## S.

## SAGDINELLA, 44-46.

- Sagdinella didrichsenii*, Fig. 1, Pl. IX., Part II., 45, = young of *Pupina nicobarica*.  
 ——— *microtrochus*, Part II., 46. [The genus will not stand.]

## SITALA, 26-42, 74-76, 145.

- Sitala arar*, Fig. 8, Pl. IX., Part II., 36.  
 ——— *attega*, Fig. 2, Pl. VIII., Part II., 29.  
 ——— ? *balliana*, Fig. 2, Pl. XV., Part III., 74.  
 ——— *confinis*, Fig. 2, Pl. X., Part II., 32.  
 ——— ? *crenicincta*, Fig. 2, Pl. XIII., Part III., 75.  
 ——— *culmen*, Fig. 4, Pl. VIII., Part II., 31.  
 ——— ? *gratulator*, Fig. 1, Pl. X., Part II., 42.  
 ——— *gramatica*, Fig. 6, Pl. X., Part II., 32.  
 ——— *haroldi*, Fig. 7, Pl. X., Part II., 33, = *stewartiana*, Nev. MS. in his corrected Hand-list, No. 200, *Microcystis*, sp.  
 ——— *infula*, Fig. 1, Pl. VIII., Part II., 26.  
 ——— *injussa*, Fig. 5, Pl. IX., Part II., 38.  
 ——— ? *intonso*, Fig. 1, Pl. XIII., Part III., 75.  
 ——— *limata*, Fig. 9, Pl. X., Part II., 34.  
 ——— *mononema*, Fig. 6, Pl. IX., Part II., 41.  
 ——— *nevilli*, Fig. 6, Pl. XIII., Part III., 70.  
 ——— *palmaria*, Fig. 3, Pl. X., Part II., 35.  
 ——— *phulungensis*, Fig. 4, Pl. X., Part II., 34.  
 ——— *placita*, Fig. 3, Pl. XIV., Part III., 74.  
 ——— ? *recondita*, Fig. 4, Pl. XIII., Part III., 75.  
 ——— *rimicola*, Fig. 2, Pl. IX., Part II., 36.  
 ——— *srimani*, Fig. 7, Pl. IX., Part II., 41.  
 ——— *subbilivata*, Fig. 11, Pl. X., Part II., 39.  
 ——— *submana*, Fig. 6, Pl. XIV., Part III., 75.  
 ——— ? *tertiana*, Fig. 9, Pl. IX., Part II., 40.  
 ——— *tricarinata*, Fig. 10, Pl. X., Part II., 39.  
 ——— *uvula*, Fig. 5, Pl. XIII., Part III., 74.

## V.

## VITRINA.

- Vitrina rüppelliana*, Fig. 1, Pl. XLII., Part IV., 154. See AFRICARION, p. 155.