

GENTLEMEN'S FANCY DRESS

How to Choose it



By Special Appointment to His Majesty the King.



W. CLARKSON,
41 & 43, Wardour Street, W.

(Far Door from Shaftesbury Avenue and nearly Opposite Apollo Theatre.)

Gold Medal, Paris Exposition, 1900. Highest Award.

COSTUMES,

ARMOUR,

JEWELLERY,

TABLEAUX FRAMES,

PROPERTIES,

GREASE PAINTS,

POWDER,

ETC., ETC.

WIGS,

HOBBY HORSES,

ANIMAL DRESSES,

DOMINO CLOAKS,

DOMINO MASKS,

SCENERY,

LIMELIGHT,

Estimates given for anything required
 in Theatrical Representations.

ONLY NOTE NEW

ADDRESS:

WARD

T., W.

do

sbury

ppio-

e.)



TABLEAUX VIVANTS,
AMATEUR PERFORMANCES,
CONFETTI FETES,
CARNIVALS,
PROCESSIONS,
BAZAARS,
ETC.

1887.—"Mr. W. Clarkson is adding greatly to his laurels by the many success
 out for the Covent Garden Balls. On the 3rd inst. he made the costumes
 first and second prizes, and one that secured a good prize, too, viz., the Jewin
 ner had a church for a headdress, illuminated with the electric light, the flame
 with a hose, a fire-escape appearing at the side."
 n 2, 1893.—Court Circular.—"Mr. Clarkson furnished the costumes, wigs, and

1888.—"Mr. W. Clarkson, 45, Wellington Street, Strand, after the recent
 festy at Osborne, was personally complimented by the Queen on the success
 he has since received the appointment as perruquier to Her Majesty."





Painted by Federigo Zuccaro. From the National Portrait Gallery. Photographed by Walker & Cockerell, Clifford's Inn.

James I. of England and VI. of Scotland, 1566-1625.—A red velvet robe lined with white satin, which also composes the sleeves and breeches; close lace-edged ruff. The tasselled cords securing the mantle are of black and gold, the white satin bows are mingled with gold on the white shoes. The Collar and Order of the Garter.



LIST OF ILLUSTRATIONS.

GENTLEMEN'S FANCY DRESS.

LARGE SIZE.

	PLATE		PLATE
Crusader	I.	Herald	V.
Period Edward III.	II.	Leicester	VI.
arde Français	III.	Rubens	VII.
Period of George II.	IV.	William III.	VIII.

SMALL SIZE.

	FIG.		FIG.
Albanian	1	Page, Louis XIII.'s Time	17
Queen Anne Period	2	Monk	18
Astrologer	3	Mirleton	19
Breton Peasant	4	Neapolitan Fisherman	20
Brigand	5	Page, Charles VI. Period	21
Bunthorn	6	Pole	22
Charles I.	7	Postillon de Long-jumeau	23
Cavalier, Charles II.	8	Robin Hood	24
Claude Duval	9	Robinson Crusoe	25
Clown, ordinary	10	Russian	26
Pierrot, French Clown	11	Toreador	27
Peppe Nappa	12	Charles Surface	28
Cook	13	Turkish	29
Débardeur	14	Tyrolean	30
Incroyable	15	Venetian	31
Jester	16	Vierlander	

BOYS' FANCY DRESS.

	FIG.		FIG.
Alice in Wonderland:—		Knight of the Order of St. John	24
Caterpillar	6	Lord Mayor	22
Dormouse	10	Masaniello	20
Mad Tea Party	8	Mephistopheles	
March Hare	9	Neapolitan Fisherman	25
White Rabbit	7	New Year	50
Unicorn	11	Pack of Cards	36 & 48
American Indian	1	Page	30
Arcadian Shepherd	2	Pierrot	35
Artaban	3	Princes in the Tower	32
Beefeater	4	“Ruddygore”:—	
Charles I. Period	5	Robin Oakapple	56
Edward VI.	17	Richard Dauntless... ..	57
Elizabethan Noble	18	Sir Despard Murgatroyd	58-9
George IV. Period:—		Romeo	31
Civil Costume	13	Russian Page	29
Courtier	12	Scotch Piper	34
Gentleman Pensioner	14	Servant	49
Gala Costume	15	Standard Bearer, Edward I. ...	52
Hamlet	16	,, ,, Stuart	53
Henry VIII.'s Time	19	,, ,, Tudor	54
Hungarian Page	28	,, ,, George IV....	55
Jester	23	Venetian Page	31
Joseph Surface	21	William III. in Lord Clancarty	51

ADDITIONAL ILLUSTRATIONS.

	PAGE		PAGE
James I.	<i>Frontispiece</i>	Dutch Boy	facing 67
Albanian	facing 5	Hearts, King of	29
Bacon, Lord Chancellor	10	Italian Musician	67
Charles I.	16	Suffolk, Duke of, 1554... ..	50
Cowboy	67	Viking	63

the magnetic pole in latitude $70^{\circ} 5' 17''$ and longitude $6^{\circ} 45''$ west, designated by an inescutcheon gules, charged with a lion passant guardant of the first; the magnetic meridian shown by a line of the fourth passing through the inescutcheon with a correspondent circle, gules, to denote more particularly the said place of the magnetic pole; the words following inscribed on a scroll, viz., "Arctæos Numine Fines." *Crests*: 1. on a wreath of the colours, on a rock a flagstaff erect, thereon flying the Union Jack, inscribed with the date June 1, 1826, being that of discovering the place of the magnetic pole, and at foot, and on the sinister side of the flagstaff, a dipping needle, showing its almost vertical position, all in or; 2. on a wreath of the colours, a fox's head erased in or.

G. 31.—Armorial Bearings of LANE of King's Bromley. *Arms*: Party per fesse or and azure, a chevron gules between three mullets counterchanged of the field, a canton of the arms of England, namely gules, three lions passant guardant in pale or. *Crest*: upon a wreath of the colours, a whiteberry-roan horse saliant, couped at the flanks, sable, bitted and garnished or, supporting between its legs an imperial crown proper.

32.—The Coronet of a Duke.

33.—The Coronet of a Marquess.

34.—The Coronet of an Earl.

35.—The Coronet of a Viscount.

36.—The Coronet of a Baron.

37.—The Royal Crown.

The Coronet of the Prince of Wales

FIG. 41.—Arms of husband and wife “impaled.”

FIG. 42.—Arms of husband with those of his wife on an escutcheon of pretence.”

FIG. 43.—Impaled arms of a K.C.M.G. and his wife

FIG. 44.—Impaled arms of a Peer and his wife.

FIG. 45.—Arms of a husband and wife conjoined, husband being a commoner and the wife being a peeress in her own right.

FIG. 46.—Conjoined arms of a Peer, whose wife is a Peeress in her own right.

FIG. 47.—The lozenge of an unmarried lady, showing her arms.

FIG. 48.—The lozenge of a widow, showing the arms of her deceased husband impaled with her own.

FIG. 49.—The lozenge of a widow, showing the arms of her deceased husband with her own on an escutcheon of pretence.

FIG. 50.—The arms of the widow of a Peer.

FIG. 51.—A quarterly coat of arms.

FIG. 52.—A quarterly coat of arms.

FIG. 53.—A quarterly coat of arms.

FIG. 54.—Armorial Bearings of BROWN-WESTHEAD Arms: Quarterly, 1 grand quarter (Brown-West quarterly i. and iv. argent, two barrulets dancettée between three Saracens' heads couped at the shoulders proper, wreathed round the temples of the first and second (for Westhead), ii. and iii. azure, on a fesse argent, three martlets in chief, and the Roman fasces surmounting two swords in saltire, and ensigned with a crown, all in sable (

icen's head couped proper, wreathed round the ples argent and sable (Westhead); 2. on a wreath the colours, a demi-eagle displayed with two heads e, charged on the breast with the fasces, swords and let as in the arms (Brown).

IG. 55.—Armorial Bearings of COCHRAN-PATRICK.—*Arms*: Quarterly 1 and 4, counterquartered i. and argent, a saltire sable between a cinquefoil in and a crescent in base gules, and on either side an 's head erased azure, on a chief engrailed of the d, three roses of the field (Patrick), ii. and iii. argent, chevron gules, between three boars' heads erased , a mullet or (Cochran); 2 argent, on a chevron s, between three cross crosslets fitchée sable, a spur-d between two lions counterpassant or within a bordure the second (Kennedy of Underwood); 3 or, three stinging-horns vert, garnished and stringed gules (Hunter Hunterston). *Crests*: 1. on a wreath of the liveries, a id proper, holding a saltire sable (Patrick); 2. on a path of the liveries, a horse trotting sable, crined and ed or (Cochran).

i. 56.—The English "difference-marks"—(a) label, escent, (c) mullet, (d) martlet, (e) annulet, (f) fleur-, (g) rose, (h) cross moline, (i) double quatrefoil.

IG. 57.—Armorial Bearings of DARBISHIRE.—*Arms*: rterly, 1 and 4 gules, on a pile issuant from the dexter on argent, three leopards' faces of the field (Darbi-); 2 and 3 argent, a cross pointed and voided sable (infield), a crescent on a crescent for difference. *Crest*: On a wreath of the colours, issuant from clouds, a er arm in armour embowed, holding in the hand er a cross pointed and voided sable.

IG. 58.—Armorial Bearings of HAIG OF BEMERSYDE. *Arms*: Azure, a saltire between two mullets in chief base, and a decrescent and increscent in fesse argent. *Crest*: On a wreath of his liveries a rock proper. *Mantling* s, double argent.

FIG. 59.—Armorial Bearings of GEORGE OGILVY H being the Arms of Haig of Bemersyde as above, differer by a bordure sable, charged with three cows' h caboshed argent.

FIG. 60.—Armorial Bearings of HAIG of Pen-I being the arms of Haig of Bemersyde as above, differe by a bordure invected or, charged with three tal heads erased, alternately with as many crescents gules.

FIG. 61.—Armorial Bearings of Major-Gen. D Haig, C.V.O., C.B., showing the Arms of Haig of B syde, differenced by a bordure parted per pale argen sable, charged with three cows' heads caboshed, all cov changed and quartered with the Arms of Veitch.

FIG. 62.—The Arms of BRITTANY, viz. an ermine sh

FIG. 63.—Ermine.

FIG. 64.—Ermines.

FIG. 65.—Vair.

FIG. 66.—Potent.

FIG. 67.—The Tincture Lines.

FIG. 68.—Arms of DAVID DE STRABOLGI, EARL OF A "paly or and sable."

FIG. 69.—Armorial Bearings of NUTTING.— Chevronny of six gules and vert, three gryphons seg or, on a chief of the last as many nut-branches sli proper. *Crest*: On a wreath of the colours, a demi-gryl segreant enclosed between two nut-branches proper.

FIG. 70.—The Partition Lines.

FIG. 71.—The Armorial Bearings of LORD BEAUM (d. 1396).—*Arms*: Quarterly, 1 and 4 azure, semé-de a lion rampant or (Beaumont); 2 and 3 azure, three or (Comyn). From his Garter Plate.

FIG. 72.—The Armorial Bearings of LORD DE LA V (d. 1398). Gules, crusuly and a lion rampant argent.

FIG. 73.—Armorial Bearings of LANCASTER of K Lynn. *Arms*: Or, two bars sable, on a pale engr

nine, four cinquefoils paleways of the second. *Crest*: a wreath of the colours, two cinquefoils fesseways, on the dexter sable, that on the sinister or, surmounted by a third cinquefoil per pale of the last and first.

G. 74.—Armorial Bearings of POOLER.—*Arms*: Per or and argent, a fesse azure, between two lions' heads ad in chief gules and a crescent in base of the third. : On a wreath of the colours, a falcon rising proper, ad or, and charged on the breast with a lozenge gules.

G. 75.—Armorial Bearings of SCROPE of Danby.— : Azure, a bend or. *Crest*: Out of a ducal coronet plume of five ostrich feathers proper.

G. 76.—Armorial Bearings of BURKE.—*Arms*: Or, a gules, in the dexter canton a lion rampant sable. : On a wreath of the colours, a cat-a-mountain sejant nt proper, collared and chained or.

G. 77.—Armorial Bearings of BASTARD.—*Arms*: Or, a n azure. *Crest*: On a wreath of the colours, a : arm embowed in plate armour proper, garnished or, lbow towards the sinister, the hand in a gauntlet ng a sword also proper, pommel and hilt gold, in sinister the point downwards.

G. 78.—Armorial Bearings of LEGG.—*Arms*: Sable, on : or, between two books argent, clasped and garnished se of the second, a leg couped at the thigh in armour ie field, spurred and garnished gold. *Crest*: On a th of the colours, a dexter arm in armour sable, ished gold, holding in the hand a roll of paper argent, een roses or.

G. 79.—Armorial Bearings of DEWAR.—*Arms*: Or, a in the sea proper, sails furled, streamers flying azure, chief of the last two boars' heads erased argent, d gules. *Crest*: On a wreath of the colours, an or erect sable, cabled gules.

G. 80.—Arms of JOHN DE BRETAGNE, EARL OF RICH- (d. 1334).—Chequy or and azure, a bordure of land (i.e. gules, thereon lions passant gardant or), a ter ermine.

FIG. 81.—Armorial Bearings of TONGE.—*Arms*: Azure on a bend inverted plain cotised or, between six martlets of the last, a lion passant between two grappling-irons flukes upwards of the first. *Crest*: On a wreath of colours, in front of an arm embowed in armour, the proper grasping a grappling-iron in bend sinister salient a lion sejant of the last pierced in the sinister shoulder with an arrow proper.

FIG. 82.—Armorial Bearings of CARRUTHERS.—*Arms*: Gules, two chevronels engrailed between three fleur-de-lis or. *Crest*: on a wreath of the liveries, a cherub's head proper.

FIG. 83.—Armorial Bearings of WHITTAKER.—*Arms*: Sable, three mascles argent. *Crest*: On a wreath of colours, a cubit-arm erect in armour holding in the hand a sword all proper.

FIG. 84.—Armorial Bearings of BLAKE, G.C.M.G.—Quarterly, 1 and 4 argent, a fret gules, a crescent for difference (for Blake); 2 and 3 sable, three lions passant guardant between four bendlets argent, in chief a fleur-de-lis or for difference (for Browne), the escutcheon encircled by the ribbon and the collar of the Order of Michael and St. George. *Crest*: on a wreath of colours, a cat-a-mountain passant guardant proper, charged with a crescent gules for difference.

FIG. 85.—Armorial Bearings of ALLEN-HOBLYN.—*Arms*: Azure, a fesse or, two flanches ermine. *Crest*: On a wreath of the colours a tower proper (and for distinction on each a cross crosslet or).

FIG. 86.—Armorial Bearings of RUTHERFURD.—*Arms*: Argent, an orle, and in chief three martlets gules within a bordure ermine. Upon a wreath of his liveries set for *Crest*, a mermaid holding in her dexter hand a mirror, and in her sinister a comb, all proper.

FIG. 87.—Armorial Bearings of GLADSTONE.—*Arms*: Argent, a savage's head affrontée, dropping blood, wreathed about the temples with holly proper, within an orle of gules, all within eight martlets in orle sable. *Crest*: a

111.—Armorial Bearings of PATTERSON.—*Arms*: It, on a fesse dancetté azure, three fleurs-de-lis of the on a canton gules, a lion rampant regardant or. On a wreath of the colours, a pelican in her piety g herself proper, gorged with a collar dancetté azure.

112.—Armorial Bearings of LANIGAN-O'KEEFE.—Quarterly, 1 azure, a lion rampant argent; 2 gules, t in armour on horseback at full speed proper, the gent; 3 or, a peacock in his pride proper; 4 vert, ards in pale or. *Crest*: Upon an antique crown, a egreant or, holding in the dexter claw a sword nt, pommelled gold.

113.—Armorial Bearings of Borough of SWINDON. Quarterly, per fess nebuly azure and gules, a pile hereon three crescents of the second in the first three castles, one and two of the third in the a mitre or in the third; a winged wheel of the he fourth, and a chief also of the third, thereon a ive engine proper. *Crest*: On a wreath of the a dexter arm embowed proper, grasping two rs in saltire or.

114.—Armorial Bearings of CROOKES.—*Arms*: Or, chevron vert, three prisms proper, between in chief osses patée of the second, and in base a radiometer . *Crest*: On a wreath of the colours, an elephant rly or and vert, charged with two crosses patté changed, resting the dexter forefoot on a prism



PREFACE.

THE fact that "Fancy Dresses Described; or, What to Wear at Fancy Balls," a book which deal exclusively with ladies' and children's costumes, as well as "Gentlemen's Fancy Dress: How to Choose It," the companion volume devoted to male attire, have both reached their sixth editions, proves that they are of some practical usefulness when it becomes a question of "buckling shoes, gartering, combing, powdering," "silks, velvets, calicoes and the whole lexicon of fopperies." I have endeavoured, I hope successfully, to enhance the value of the present edition of this work by many fresh illustrations of characters that, experience teaches, are ever in demand.

ARDERN HOLT.

SPECIAL FABRICS

FOR

Historical and Fancy
Costumes,

ALSO

HOSIERY and BOOTS,

can be obtained from

B. BURNET & Co.,

Theatrical Drapers,

Garrick Street,

Covent Garden,

LONDON.

Greek Borderings,
Chinese Brocades,
Japanese Crepes,
Oriental Silks,
netian Velvets,

Cloth of Gold,
Clown Cottons,
Animal Skins,
Mail Cloth, Leatherette,
Pierrot Hats, etc.

and sable, grasping a javelin in bend sinister transfixing a leopard's face argent.

FIG. 102.—A dragon passant with wings displayed

FIG. 103.—Armorial Bearings of MANSERG
Barry wavy of eight argent and azure, gutté-d bend between six arrows barbed and flighted gu fountains proper. *Crest*: On a wreath of the colours, a wyvern sejant and erect gules, gorged with a collar argent, and supporting with the claws an arrow erect barbed and flighted argent.

FIG. 104.—Armorial Bearings of the Burgh of Arms: Argent, on the waves of the sea, an ancient sable in full sail, the sail charged with the arms Earls of Mar and Kellie, pennon gules, flag of the charged with a pale of the second on a chief vert, dexter a garland, the dexter half hops, the sinister all or, and in the sinister a golden fleece. *Crest* wreath of the liveries a griffin gules, winged, armed beaked or, langued azure.

FIG. 105.—A unicorn rampant.

FIG. 106.—An heraldic antelope rampant.

FIG. 107.—A sea-dog rampant.

FIG. 108.—An eagle displayed.

FIG. 109.—Armorial Bearings of RAMSAY of Kildalton
Arms: Parted per fesse argent and sable, an eagle displayed beaked gules, charged on the breast with a galley, furred all counterchanged. *Crest*: On a wreath of the liveries, a unicorn's head couped argent, armed crined or.

FIG. 110.—Armorial Bearings of BAILEY.—*Arms*: Gules on a fesse nebuly between four martlets, three in chief and one in base argent, two roses of the first, barbed seeded proper. *Crest*: On a wreath of the colours, in chief an anchor in bend sinister proper, a female figure, vert, supporting with the dexter hand an escutcheon gules charged with a martlet argent, and resting the sinister hand on the stock of the anchor.

the colours, issuant from a wreath of
mi-griffin sable, supporting between the clav-
led with a wreath of oak all proper.

—**Armorial Bearings of CUNYNGHAME.**—*Arms*: shakefork sable, between three fleurs-de-lis azure, chief and two in the flanges. On a wreath of his set for *Crest*, a unicorn argent unguled, maned red or, lying on a mount vert.

89.—**Armorial Bearings of BATES.**—*Arms*: Barry of per pale azure and argent, counterchanged, on a chief or, cotised gules, three pallets of the last, each charged with a fleur-de-lis of the third. *Crest*: On a wreath of the colours, five fleurs-de-lis alternately or and argent in front of a swan's head couped proper, and charged with a neck with six barrulets azure.

90.—A lion rampant.

91.—A lion passant.

92.—A lion statant.

93.—A lion sejant.

94.—A lion sejant erect.

95.—A lion couchant.

96.—A lion dormant.

97.—A lion saliant.

98.—A lion passant guardant.

99.—A lion rampant regardant.

100.—**Armorial Bearings of MACKENZIE OF BALLONE.**—*Arms*: Quarterly, 1 and 4 azure, a stag's head caboshed argent, a rock in flames proper; 2 and 3 gules, three human figures conjoined at the thigh, armed garnished and spurred argent within a bordure indented or. *Crest*: On a wreath of the colours a mountain in flames proper.

101.—**Armorial Bearings of DORMAN.**—*Arms*: Argent, two bars azure, over all a lozenge sable, thereon three leopards' faces in pale of the field. *Crest*: on a wreath of the colours upon a rock proper, a lion's paw



INTRODUCTION.

THE object of the present volume is to assist those who desire to make their Costumes at home, as also to direct the choice, where recourse is had to a costumier. The numerous descriptions comprise most of the characters which have been seen in ball-rooms during past years.

The illustrations are intended not only to bring one particular character before the mind's eye, but, in many instances, the costume of the time, and to be a guide in the arrangement of many other dresses. Therefore costumes of Edward III., Elizabeth, Charles I., Charles II., Anne, George II., George III., and William III. periods, Incroyable, Rubens, Garde Français, and Pages have been selected, showing leading traits in the clothes worn from century to century, and demonstrating what are habits, *juste-au-corps*, trunk-hose, surcoats, and other puzzling terms. I have illustrated in national dresses—Albanian, Breton, Italian, Russian, Spanish, Turkish, German, and Polish; and I have selected the several costumes of a Cook, Débardeur, Bunthorn, Aströloger, Jester, Mirliton, and Monk,—because they are among the dresses most easily arranged at home, as are, also, Bookmaker, Butler, Baker, Baby, Evening Dress of the Future, Crossing Sweeper, the Cure, Convict, Coachman, Jeames, Christy Minstrel, Two Obadiah's, the Cambridge Academical Robes of the past century, Gamekeeper, Masaniello, a Mutilated Sportsman, the Fancy Dress of Nineteenth Century, Shoeblack, Serjeant Buzfuz, and Man of Letters; all of which are fully detailed in the body of the book.

The dresses worn at Fancy Balls are not very correct in all their details, either nationally or historically, and I have described rather what is best to wear than what the peasants of the several countries and the people who have preceded us veritably wore ; but it is well to avoid glaring inconsistencies ; I will therefore remind you that powder was introduced in James I.'s reign, and went out in 1795. With regard to beards,—which are generally a difficulty,—the ancient Britons invariably wore the moustache, and often a flowing beard, which, among the Druids, added much to their venerable aspect. The Anglo-Saxons wore theirs closely trimmed and united to the whisker ; or the upper lip shaved and the beard parted down the centre of the chin. Among the Franks long hair and beards were held in great reverence. Some historians imagine that at one period they were forked, and dyed blue and other fantastic colours. William the Conqueror and his followers were clean shaved when they invaded England, but allowed their beards to grow to an inordinate length after they came over here, especially in Henry I.'s time. In Henry II.'s time the beards were short and close.

In Richard I.'s and John's time the wearing or non-wearing of beards and moustache was optional. Edward II. had a curled beard ; but at that period they were only worn by elderly people, officers of State, and Knight Templars. Throughout the 14th century young men were close shaved ; old men wore beards. In Henry V.'s reign beards, whiskers, and moustache were little seen. Every one was close shaven during the reign of Henry VI., and until the middle of the 16th century, a few old people being the only exceptions. In Henry VIII.'s and Edward VI.'s time pointed beards were often seen, and in Elizabeth's it was almost possible to decide on a man's calling by his beard. The Churchmen wore the Cathedral beard, the soldier the Stiletto beard. There was likewise the Swallow, Sugar-loaf, and Spade beards. In Charles I.'s reign they were peaked, with an upturned moustache ; and from that period the wearing of beards gradually declined until they have

been revived in our own time. It is altogether incorrect to wear any hair upon the face with powdered wigs.

Among costumes suitable to boys are Aquarium, Christmas, Cupid, Fly, the characters in nursery rhymes, such as Jack, Jack Horner, Simple Simon, Tom Tom the Piper's Son, Boy Blue and Little Boy Blue, Mignon of the Court of Henry III., Aladdin, Babes in the Wood, Master Horace Beckford, Cavalier after Van Hugenburg, Marquis of Carabas, Clock, King Cole, Frog, Prince, Humpty Dumpty, Master Lambton, Pieman, Lord of Misrule, the several Pages, Son of Charles I., Jockey, Postboy, costumes after Sir Joshua Reynolds's Boys, Roman Boy, Shoeblack, Sweep, Dog Toby, Dick Whittington, and Turkish Boy, all of which are fully described.

Among the best comic costumes are Picnic, Anchor, Banner Screen, Champagne Bottle, Bumpkin, Æsthetic Clown, Rosebud, Nabob Pickle, Phrenological Bust, and Monsieur Reveillé.

Some costumes combining two characters afford amusement, such as Black and White, Night and Morning, the two Romeos, Peace and War.

In selecting a costume a little forethought is necessary; some suit particular features and build of body better than others. A very short man as Cœur de Lion, or a tall one as Richard III., would be anomalies; but more than this, people at Fancy Balls often render themselves absolutely ridiculous because they assume characters in every way opposed to their own personality. I have seen a man with fine presence, and a face which would have added dignity to the garb of a Venetian senator, arrayed as a clown, and an inveterate practical joker, he who was "wont to set the table on a roar," "a fellow of infinite jest," as Rizzio. In our day, when taste and culture are considered worthy of a thought, historical costumes should not be chosen by people of education without some little study. England is rich in old portraits, that might be copied with advantage rather than the theatrical ideas of periods

which originate, not in history, but in the fertile brains of modern days. Our Royal Family afford an example worthy of imitation. The greatest pains were bestowed on the costumes worn at Her Majesty's Fancy Ball in 1842, when the reign of Edward III. was specially selected; and the Fancy Ball at Marlborough House was notable for a Venetian and a Vandyke Quadrille, so truthfully carried out it seemed as if the originals of the Old Masters had come to life again. A long experience of Fancy Balls makes me advise those who desire to dance to avoid heavy wigs, hats, cloaks, swords, wands, and the several etceteras which have to be carried in the hand. They are laid down anywhere early in the evening, and seldom found except with difficulty.

Wigs are made much lighter now, and save a great deal of trouble, but where it is possible it is best to powder the hair instead of wearing a white wig. This is easily done by greasing the head slightly, and then covering the hair with violet powder, jerked from a powder-puff by knocking the elbow.

For Calico Balls the costume, though made of cotton, chintz, cretonne, &c., is generally allowed to be trimmed with gold or silver, and neither cotton shoes nor gloves are deemed necessary.

Among suitable costumes for Calico Balls are Postboy, Incroyable, Yankee, Perfect Cure, Porter, Cook, Christy Minstrel.

The advertising columns contain particulars of the several etceteras for completing the costume, in the way of jewellery and accoutrements.

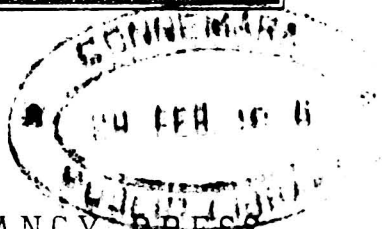
Many are deterred from accepting invitations to Fancy Balls by the difficulties which surround appearing in appropriate guise. My object has been to meet and facilitate these as much as possible.



Photo by Ralston, Glasgow.

Albanian.—Red fez, gold embroidered vest and jacket with pendant velvet sleeves, embroidered white undersleeves, white pleated fustan, red sash, gaiters to match jacket.

4 MAY 1944



GENTLEMEN'S FANCY DRESS.

ABBE. Black silk stockings, and plush breeches; black low shoes with buckles; three-cornered hat, and curled wig; black cloth or velvet coat and vest, with cambric frill in front and at the wrist; black cloth flowing cloak. An Abbe in Louis XIV.'s reign would have the hair powdered.

ABSOLUTE, CAPTAIN (uniform of George III.'s time). Scarlet coat with white facings, skirts turned back and faced with white; white kerseymere breeches; lace cravat, and ruffles; three-cornered hat, silk stockings, shoes, gilt buckles, gilt sword.

AFGHAN CHIEF. Blue and gold turban; white embroidered coat; scarlet waistcoat with gold lace and embroidery, scarlet waist-belt with daggers; necklace of beads; sandals and tights.

ALADDIN. Full trousers of white cashmere, covered with spangles; loose shirt; green satin jacket embroidered in gold; round skull-cap of green satin, and pigtail; silk scarf-sash, trimmed with gold, round waist; high boots. Or, pique trousers with spangles; loose shirt; short green jacket, also covered with spangles; green scalp-cap, and pigtail.

ALBANIAN. Full silk trousers to knee, embroidered velvet gaiters, and shoes; short velvet jacket, straight-cut at waist, embroidered, and bordered with a row of close-set buttons, the sleeve loose and opening up the inner seam, showing white shirt; vest; full cambric shirt, silk scarf round waist;

dagger. Colours usually chosen, blue and scarlet, green, marone, and gold. Red fez. Full plaited petticoat of cambric. See Fig. 1. Another and simpler rendering:—Full white linen trousers to the knee; white shirt with long loose sleeves; black cloth waistcoat worked in gold, silk scarf of many colours round the waist; red cap, having long black tassel; brown silk stockings; black shoes.

ALBANIAN CHIEF. Under-jacket of blue and silver, over this a purple velvet dolman, embroidered in gold and studded with jewels; fustan or kilt of white cashmere, striped with gold, and fringed; shawl of the same, fastened in folds on shoulder with diamond and pearl brooch; gaiters of purple velvet, jewelled; waist scarf of crimson silk; belt, purple and gold, with precious stones. Tarboosh, crimson, with gold bullion. A yataghan, with two ornamental daggers.

ALBERT DURER. Quilted satin doublet; russet velvet cloak covering the legs below the knee, and hiding the close-fitting breeches. It has a square cape, shorter in front than at the back; the sleeves are large and pendant. One stocking is brilliantly gartered; a gold chain falls over the shoulders; the hair is long and in curls; large round hat, and feather; velvet shoes, square and puffed at toes, a strap over instep.

ALFRED THE GREAT (KING). As an Anglo-Saxon king:—Woollen blouse, reaching to the knee; royal mantle of samite, or silk, lined with fur, fastened at the throat with a brooch; circlet of gold with three fleurs-de-lis on the head. As a cowboy in the neatherd's cottage:—Bare legs and sandals; long dark cloth skirt and tunic cut in one, with long sleeves, girded at waist; full breeches, and gaiters; long hair; staff in hand.

ALGERIAN. Jacket, waistcoat, and gaiters of blue or red cloth, or ruby, blue, or green velvet, embroidered and trimmed with gold braid; full white linen trousers; embroidered stockings and shoes; Oriental turban; sash and dagger; shawl thrown over shoulders; or burnous.

ALGERIAN CHIEF. Black velvet under-dress, braided in gold; burnous and turban.

ALSATIAN. Drab cloth jacket trimmed with brass buttons, and bordered with blue, over a red vest; brown velvet breeches, with brass buttons down the seams to knee; coarse



1. Albanian.



2. Courtier (time of Queen Anne).



3. Astrologer.



4. Breton.

knitted stockings, tied with ribbons; high boots; belt, embroidered, round waist; round fur cap.

ANCHOR. One of many comical notions which at the present time find favour at Fancy Balls. The anchor is formed of splints and calico, into which the wearer betakes himself, and manages slowly to propel it along the room. He generally wears a sailor costume, and vacates the anchor as occasion serves.

ANDALUSIAN. Black cloth jacket, trimmed with netted fringe and silver buttons; blue satin waistcoat, trimmed with silver; black silk breeches, blue stocking, leather garters, and shoes; Spanish point-lace collar and ruffles.

ANNE, QUEEN (WALKING COSTUME OF PERIOD). Black shoes and buckles; breeches; long waistcoat with ruffle; long-skirted coat, having upright collar; tricorn hat. **Full Dress.** Curled wig; lace tie; long embroidered coat with large sleeves, muslin puffed sleeve beneath; scarf round waist; silk stockings; knee-breeches; tricorn hat. *See Fig. 2.* Gentlemen wore square-cut coats with large hanging sleeves, lace ruffles, skirts stiffened with wire and buckram; long flapped waistcoats with pockets; breeches, gartered above or below the knee; blue, scarlet, or white stockings, with gold or silver clocks; square-toed shoes with high heels, small buckles; pommelled sword, lace cravat, wig, and cocked hat. Coats were made of flowered or plain velvets, or cloth, and overcoats of the same, embroidered in gold or silver; waistcoats were embroidered and interwoven with gold or silver; curled perukes; three-cornered cocked hat; cambric ties. The middle class wore the same in less costly materials: no swords, and wigs of moderate size.

AQUARIUM (suitable for a boy). Stockings; short trousers; close-fitting bodice high to the throat, with tight sleeves to wrist, made in light green sateen, or cotton, covered with lobsters, crabs, and other fish, in bright red embroidery, or in red paper stuck on; green seaweed fringe goes round the knees, waist, and the close-fitting green cap; red shoes; a belt of shells.

ARAB. Full green silk trousers; white linen vest; red embroidered jacket; scarf of many colours round waist; scimitar; ammunition pouch; burnous from shoulders; red silk turban,

often inscribed with verses from Koran. Occasionally a band of gold encircles the flowing drapery about the head.

ARAB SCRIBE. Shirt and trousers of white soft calico, red twill sash, white turban, and slippers with turned-up toes.

ARAB DRAGOMAN. Trousers of shot green and black silk; over the jacket a scarf of many colours; a fez cap. *See also* SHEIK.

ARCITE (*Chaucer*). *Juste-au-corps* and trunks of brown satin with belt; dark blue stockings; pointed shoes; hair flowing.

ARMAND, KING OF BOHEMIA. Blue velvet doublet trimmed with bullion lace, trunks to match; scarlet tights, russet boots, gold spurs; drab slouched hat trimmed with blue, and gold and diamond ornaments, and ostrich feathers; jewelled dirk.

ARMENIAN. Long loose robe of wool or silk bordered with fur, open in front, showing a loose under-dress and silk vest; embroidered white scarf with embroidered ends round waist; fur caftan or turban trimmed to match outer robe.

ASCHAM, ROGER. Square cap, black clerkly gown with white bands, and silk stockings.

ASTROLOGER. Long velvet or cashmere toga with wide hanging sleeves, bordered with satin, bearing the signs of the zodiac in gold round shoulders; high pointed velvet cap, entwined with a gold snake; wizard's wand, large spectacles, book, and telescope; long pointed shoes turning upwards; a ruff at throat; ruffles at wrist, visible beneath large sleeves. *See* Fig. 3.

AUSTRIAN HUSSAR. Light blue cloth jacket, and pantaloons, trimmed heavily with silver; silk sash round the waist; Russian boots and spurs. Many of the Austrian uniforms, especially the white with red facings, are most effective in a ball-room.

AUSTRIAN PEASANT. *See* GERMAN PEASANT. Black velvet jacket and breeches; green braces and white shirt; hat with ribbons; white silk stockings and shoes.

AZIM (*Lalla Rookh*). Loose Oriental robe bordered with gold; a scarf of embroidered crape round the waist; Persian



5. Brigand.



6. Bunthorn (Patience).



7. Charles I



8. Cavalier of Charles II

cloth bonnet, viz., round in shape, bordered with fur; quiver with arrows at waist. Or, as a warrior in close-fitting coat of mail, and helmet.

BABES IN THE WOOD (*Fairy Tale*). The boy has long red stockings and puffed trunks, striped with blue; a close-fitting red jerkin, cut in tabs at the waist; the tight sleeves with epaulettes, also cut in tabs.

BABY (to be assumed by a tall man). White muslin dress tucked and trimmed with embroidery, low neck, short sleeves, broad blue sash; coral necklace around the throat; sleeves looped up with coral armlets; white socks; blue kid shoes, with straps buttoned round ankles; rattle in hand.

BAKER. Round linen jacket with sleeves rolled up to elbow; ordinary trousers; long white apron; square white cap; loaf of Vienna bread carried in hand.

BALEARIC ISLES. The Pagèsos, or peasant proprietors, wear loose, wide drawers of blue cotton, tied under the knee the legs bare; head covered with twisted handkerchief; waistcoat of striped woollen stuff, open on chest in a point; black jacket, with embroidered bands; sometimes with broad-brimmed hats.

BALOCHARD HONGROISE. Black satin hat with white and cerise cord and tassels; blouse of white cashmere rimmed with crimson and cerise ribbon; crimson sash trimmed with gold fringe; trousers of blue cashmere, white and crimson trimmings; high leather boots.

BALSAMO, JOSEPH. Rich costume of Louis XVI.'s time. Satin coat, with large flap pockets, and turnback cuffs of velvet, heavily embroidered; embroidered silk waistcoat; tight velvet breeches; silk stockings; shoes with buckles; lace cravat and ruffles. *See* LOUIS XVI. PERIOD.

BANDIT. *See* BRIGAND, Fig. 5.

BANNER SCREEN. Black boots with yellow rosettes black stockings with spiral gold stripes, trunk hose of black velvet embroidered in gold. The front of the loose habit forms a screen, made of red satin, with black and gold fringe, and grotesque imps in blue satin; the back being of black satin, with gold fringe, covered with cherubs; across the shoulders a gold bar, carried round the neck; the sleeves, of red satin with gold fringe at wrist; black pointed cap with gold point.

BARBE BLEU. *See BLUEBEARD.*

BARBER OF SEVILLE (*Figaro*). Short black velvet or cloth jacket, with broad crimson satin sash, fastened on the left side; black velvet knee-breeches; low shoes, with white silk stockings. Carries shaving materials and powder-box. *See FIGARO.*

BARRAS CITIZEN. Coat and breeches of black and amber striped satin; flowered silk waistcoat; cocked hat, with amber and black satin bows; large white stock with lace frill; silk stockings, and pumps.

BARRI, FISHERMAN OF. Blue and white striped shirt; buff trunks; red stockings; brown shoes and sandals; striped scarf round waist; brown cloth cloak, embroidered, fastened to shoulders.

BASQUE PEASANT. Brown cloth jacket, with crimson cuffs and crimson sash round the waist, the ends falling at the side; blue cloth double-breasted vest; breeches, with a band of crimson outside the leg; crimson hat, of round, flat shape, known as the Basque; white stockings; high boots.

BASSANIO (*Merchant of Venice*). Marone doublet, trunk and hose; black gown with hanging sleeves.

BAVARIAN PEASANT. Thick shoes; knitted stockings; black breeches; red waistcoat with white buttons; long blue coat, much plaited at back; low felt hat.

BEAST (Fairy Prince, as worn by the Duke of Connaught at Marlborough House Ball). Ruby velvet doublet; grey satin tights; ruby shoes; a leopard's skin with claws, attached to shoulders with jewels; small round ruby cap, and feather.

BEAU. Well frizzed bag-wig, powdered; black beaver hat, tucked under arm; Brussels lace ruffles; embroidered coat; silk stockings; breeches above knee; pumps with diamond buckles. Large repeater and seals at fob; gold-hilted sword, with jewels fastened on with knot of ribbons.

BECKFORD, MASTER HORACE (from Cosway's picture). High hat and feathers, hair hanging down in curls; tight jacket and breeches; lace collar, turn-back cuffs, silk stockings, and shoes; scarf tied round leg with bow on outside of leg; stick in hand.

BEEFEATER (or Yeoman of the Guard). Long-skirted scarlet Tudor coat, edges and seams bordered with black



Painted by Paul Van Somer. National Portrait Gallery. Photographed by Walker & Cockerell, Clifford's Inn.

Sir Francis Bacon, Lord Chancellor, 1561-1626.—Robe of black velvet richly trimmed with gold galon and buttons. Sleeves perpendicularly slashed with white satin, the cuffs and fluted ruff edged with Bone lace; soft black hat.

velvet and gold ; crown and Tudor rose, shamrock, and thistle, embroidered on breast ; close-plaited muslin ruff at throat ; full sleeves to wrist ; low-crowned black velvet hat, blue, red, and white ribbons round ; rosettes of the same on black shoes and at the knees of breeches ; red stockings ; sword in gold belt. Long-handled pike, carried in hand. The chief warder has a distinctive gold castle embroidered on his arm, and his insignia of office is an axe mounted on a velvet staff.

BERGER. In pink, blue, or flowered cotton, coloured stockings ; shoes with rosettes ; short breeches ; full-skirted coat ; white full shirt ; ruff ; straw hat with roses ; shepherd's crook. *See also* SHEPHERD.

BERNE, PEASANT OF. *See* SWISS.

BLACK AND WHITE. This costume is divided down centre. One side a Christy Minstrel, the other side dressed as a drawing-room tenor.

BLACK SEA PEASANT ON NORTHERN SHORES, 17th CENTURY. Pale blue cashmere robe, edged with white satin cord, blue and white silk sash ; coat of orange cashmere, lined with white satin and trimmed with silver, white satin collar and cuffs ; slashed rose-coloured satin breeches ; cap of blue and rose colour, with white feather on right side ; boots of orange morocco, with black heels.

BLUEBEARD. Flowing Eastern robe ; red silk turban ; scarf round waist of many colours ; loose trousers to ankle, one yellow the other red ; red pointed shoes ; beard blue ; carries key. The blue beard may be made of wool, plaited, damped, and baked. It has been more elaborately rendered on the stage by pointed boots buttoning half up to knee ; full striped silk breeches ; long silk coat and cap. In France as *Barbe Bleu* the dress was a *juste-au-corps* of blue velvet, bordered with gold ; the jacket of brown velvet, long hanging sleeves, lined with red ; sash round waist, and sword ; velvet coif, cap, silk tights, blue shoes.

BLUE, BOY. *See* BOY BLUE.

BOHEMIAN PEASANT. Black jacket, trimmed with gold, as also the red silk trunks ; silk stockings, and embroidered garters ; silk sash round waist, brown cloak, and red cap.

BOOKMAKER. Drèssed as a professional betting man. White hat, with black band, green veil round ; check trousers ;

light overcoat. Large betting-book in hand, and a paper with "2 to 1 bar 1."

BOTHWELL, EARL. Velvet jacket, trunks, and cloak, slashed with satin and gold braid; silk tights; shoes with rosettes; cap and plume; sword at side. The colour is a matter of taste. The costume will admit of rich embroidery.

BOUNDING BALL OF BABYLON. An acrobat in spangled suit.

BOY, BLUE. Dressed as Gainsborough's "Blue Boy." Black shoes, with large blue rosettes; the same at knee. Stockings, breeches, gartered with lace tie above knee; close-fitting doublet, buttoning in front; cloak, fastened to shoulder, bordered with gold braid, all blue; the sleeves come to wrist, with lace Vandyke cuffs, and are slashed twice inside the arm, showing white undersleeves; large lace collar; plumed hat; hair curled.

BOY BLUE, LITTLE (*Nursery Rhyme*). The same dress, with the addition of a horn hanging from the neck with blue cord.

BRETON. Cloth gaiters to knee; full closely-plaited breeches, called Bragonbas, of coarse woollen cloth; waistcoat fastening on one side, shirt-collar showing; scarf round waist; loose jacket, close double row of buttons both sides, often richly embroidered with the likeness of a saint curiously wrought at the back; slouch hat with peacock's feather; long hair; buff shoes. Colour dark blue or claret. Or (*see Fig. 4, p. 6*), blue and white jacket, trimmed with white buttons; white flannel breeches, with gold and fancy trimmings; blue garters; buff shoes and buckles; black felt hat, with chenille of different colours round.

BRIGAND. Black velvet jacket; cloak slung from shoulders; green satin vest and breeches; coloured sash round waist, with daggers and pistols; leggings, with ribbons interlaced over them; high hat, and rosette of coloured ribbons. May also be carried out in brown cloth and leather, and in other colours, with more or less embroidery. *See Fig. 5, p. 8.* *See also* CALABRIAN BRIGAND, MEXICAN BRIGAND.

BUCK. Blue cloth coat, with high collar like a monk's hood; buckskin or nankeen breeches, incredibly tight; waist-

coat opening four inches at chest, stiff white muslin cravat ; Hessian boots.

BUCKINGHAM, DUKE OF (*Peveril of the Peak*). Full satin breeches ; silk stockings ; shoes high up on instep, ribbon bows ; long velvet richly-broidered coat, shoulder-knots of satin ribbon, sleeves short enough to show undersleeves and ruffles ; shirt hanging loosely over breeches, with pyramid of satin bows in front ; lace necktie ; periwig ; slouch hat with plumes.

BULGARIAN PEASANT. Brown leather boots, with red leather tops embroidered in gold ; green cloth knickerbockers ; fawn cloth Jersey, embroidered at edge and round the neck ; over this a brown cloth blouse bordered with red, cut open at neck, crossing in front, leather belt round waist, loose sleeves ; round fur cap ; flask suspended from belt. This is the ball-room rendering ; in real life the people wear sheep-skin and suits of brown undyed woollen homespun.

BULGARIAN SHEPHERD. *See* SHEPHERD.

BUMPKIN. Blue worsted stockings ; thick leather shoes ; long smock ; felt hat ; horse-collar round neck.

BUNTHORN (*Patience*). Velvet jacket and breeches ; large velvet cap, sometimes with wig of long hair beneath ; pointed shoes, and stockings. Green or black are generally chosen. *See* Fig. 6, p. 8.

BURGUNDIAN COSTUME, 1476. Parti-coloured coat or jerkin opening down the front and reaching below hips ; girdle of metal and precious stones ; large hanging sleeves, tight sleeves beneath ; close-fitting woollen tights ; leather shoes embroidered in gold, with very pointed toes ; hair in curls. Rich materials should be used.

BUTLER OF 19th CENTURY. One of many comical evasions of fancy costumes.

BUZFUZ, SERJEANT. In a Serjeant's legal black robe and coif, with muslin bands.

CABALLERO. *See* MEXICAN.

CABLE, ATLANTIC. Sailor's dress ; a thick cable wound four or five times round waist, encircles the limbs below the knees, and falls in thick coils over left arm ; an anchor is attached to it. The brim of the hat is turned up in

front and bears the words, "Telegraphic Despatches"; the long blue streamers are marked "Transatlantic Cable."

CALABRIAN BRIGAND. High hat, with many-coloured ribbons; garters laced across with the same; short claret-coloured cloth jacket and breeches. *See also* BRIGAND, and Fig. 5, p. 8.

CAMBRIDGE ACADEMICALS OF NOBLEMAN A CENTURY AGO. Silk gown deeply braided with gold lace; cherry and white hood, flat velvet cap, with gold tassel; knee-breeches; shoes with buckles; powder.

CANTONEER. Blue and white striped shirt; scarlet silk collar and cuffs; blue coat, trimmed with gold braid; white loose knickerbockers, trimmed to match, scarlet buttons; scarlet sash, with gold fringe. Or, more simple, a striped shirt, with silk sailor collar and cuffs; trousers of same, short to knee; silk stockings; jacket slung from shoulders.

CARABAS, MARQUIS OF. Red velvet habit, showing white under-vest, and ruff at throat; gold belt and sword round waist; edge of habit bordered with gold; long pointed sleeves over tight ones; silk tights; pointed shoes with rosettes; velvet cap and plumes.

CARDS. Knave and King of the suits should be copied as nearly as possible from the cards, in scarlet, blue, crimson, and purple cloth, or satin, quartered and trimmed with gold, for tunic and trunks. Scarlet hose; hat in two shades, with gold spades, diamonds, clubs, or hearts, according to the suit. Sometimes they are represented by costumes of two shades of satin; caps, *juste-au-corps*, trunks, shoulder-cloaks, and tights, each leg of a different colour. The hearts, spades, diamonds, or clubs, scattered over the dress in black velvet. Any other card required should be carried out after the same fashion.

CASSIO. Blue doublet; cloak of deeper blue; blue hose and trunks; black cap.

CATALAN (Spanish Fisherman). Black velvet short breeches; red stockings and sandals; white jacket, embroidered with black and red velvet; red sash; Basque cap; large striped cloak over one shoulder; white shirt, turn-down collar; black silk tie.

CAUSSIAN, PRINCE. Black velvet tunic with scarlet satin border, embroidered in gold; breeches of same scarlet

satin, and vest; satin sash, with gold ends; cap of velvet and satin.

CAVALIER DRESS FOR BOY (after Von Hugenburg). Dutch type. Broad-brimmed Flemish hat, with ostrich feathers; doublet and waistcoat; breeches to knee; sword-belt, crossing bodice; tie at throat; hat and plumes; shoes with bows; gauntlet gloves.

CAVALIERS. See CHARLES I. and II., and Fig. 8, p. 8.

CELESTINE MONK, as worn at Queen's Fancy Ball. See MONK.

CHALKS, HIS PICTURE IN. White suit of Georgian period, with powdered hair. See Plate IV., also Fig. 28, p. 54.

CHAMBERLAIN TO THE KING OF ARAUCANIA. Velvet dress of Georgian period. A small saucapan slung over the shoulder; a foot-warmer in the form of a large cross at the side; bunch of keys at his back. See Plate IV., p. 27.

CHAMPAGNE BOTTLE. A cap formed like the neck of the bottle, with a gold-headed cork; black robe, inscribed in front with "Veuve Cliquot" in gold lettering.

CHARLATAN. See QUACK.

CHARLEMAGNE. Jewelled crown; rich red velvet cloak with fleurs-de-lis embroidered in gold and jewels; loose white satin robe reaching to knee, confined at waist by girdle, and bordered with gold; legs covered with chain armour; sceptre with effigy of human hand; sword at side.

CHARLES I. AND HIS CAVALIERS wore doublets and loose full trunks of velvet, slashed with satin; pointed shoes or large cavalier boots, wide at top, edged, with a fall of lace; velvet shoulder-cloaks; Vandyke lace collars and cuffs; large plumed hats; hair in curls; the King displaying his blue ribbon and star on breast.

CHARLES I. (Irving as), at the Lyceum, wore a black satin coat, waistcoat, and breeches with tags at the knees, pointed shoes, silk stockings, long velvet cloak lined with blue, blue ribbon with star, Vandyke lace collar, sleeves to wrist with turn-back cuffs of lace, sword and sword-belt, large hat and feather. See Fig. 7, p. 8. A good Cavalier Dress of Charles I.'s time is as follows:—Blue or violet velvet coat

and mantle, slashed with white satin, handsomely embroidered in gold; black velvet breeches with deep fringe; white silk hose, black shoes with diamond buckles; old point-lace collar and ruffles; cavalier hat and feathers. Crimson velvet and white satin, black with crimson satin, violet and maize, purple and crimson, puce and scarlet, brown and black, green and gold,—all these would be suitable colours. **Duke of Gloucester, Son of Charles I.** (Suitable for a little boy.) Yellow satin suit, habit fastening down the front with buttons; large lace collar; sleeves to wrist, with turn-back lace cuffs, slashed inside arm, showing white satin; yellow satin breeches, with ribbon knots at knees; silk stockings; shoes with rosettes; hair cut square across forehead. *See PAGE OF CHARLES I.*

CHARLES II. AND CAVALIERS. White moiré antique coat cut loose and coming just below the waist, fastening at the throat only and showing full white shirt beneath, the coat trimmed with tabs of white satin and gold; crimson velvet trousers, full to knee; also, shoulder-cloak, lined with white and trimmed with white satin and gold; cross belt and sword; large felt hat and feather; high leather boots with lace falling from knee, or shoes with bows; lace collar and sleeves; curled wigs. This admits of many varieties of colouring. *See Fig. 8, p. 8.*

CHARLES II. Gentleman's dress of period (*see BUCKINGHAM, DUKE*) is similar to the King's. The following is a good example:—Dark blue velvet coat richly embroidered in gold, turned up with red; buff leather breeches; cavalier boots to knee, with falling lace; crimson sword-belt covered with gold embroidery and worked with royal cipher; large cavalier hat, with white feathers. *See Fig. 8, p. 8.*

CHARLES III. OF SPAIN. *Juste-au-corps* of black velvet, with turquoise-blue satin sleeves, and trunk hose; blue stockings; black velvet shoes. The breast of the *juste-au-corps* embroidered. Spanish Orders and Stars.

CHARLES V., HUNTSMAN OF TIME OF. *See HUNTSMAN.*

CHARLES V. OF SPAIN. Velvet doublet, with ruff and girdle; puffed satin sleeves; trunk hose; silk tights; velvet cap and feather; velvet shoes, puffed, with large square toes; chain round neck



Painted by Daniel Mytens. From the National Portrait Gallery. Photographed by Walker & Cockerell, Clifford's Inn.

Charles I., 1600-1649.—The habit and breeches of grey cloth and satin with silver galon. Round the waist and knees loops and silver tags; Vandyke collar of the period, boot and gloves of untanned leather.

CHARLES VI. Blue velvet habit with gold *fleurs-de-lis* and bordered with gold (this comes below the waist and fits the figure to the neck); crimson velvet cloak with gold border, lined with white satin; crimson silk tights; long pointed red shoes; scarlet velvet cap, inside crown, with feather at back.

CHARLES IX. White satin damask doublet trimmed with silver, slashed with violet satin, buttoned from throat to girdle; large sleeves; violet satin trunks to match; violet silk tights; violet hat, with plume; violet velvet cloak, lined with satin and trimmed with silver, looped with a diamond; rapier, sword, and poignard in ornamental girdle; boots of buff leather, with pointed toes; triple ruff, edged with gold.

CHARLES XII. OF SWEDEN. Uniform of sky-blue velvet, slashed with silver; buckskin breeches; long jack-boots; sword and belt; three-cornered cocked hat; diamond star, and ribbon of the order of the Sword of Sweden.

CHASTELAR. Tunic of black velvet, slashed with black satin and trimmed with jet beads; trunk hose to correspond; black silk stockings; black velvet mantle lined with black silk; Vandyke collar; lace ruffles; black velvet hat, with white ostrich feather.

CHINA FIGURES. Suit cut after Georgian period, viz., tight breeches, waistcoat, and tail coat, made in Pompadour chintz, or pink, white, or blue sateen, worn with silk stockings, black shoes and buckles, lace ruffles and tie, and powdered hair. *See also* LOUIS XV.

CHINESE COSTUME. This consists of three robes: an over-dress of embroidered satin, a loose white robe and red vest, long square-toed satin boots, round cap, with feathers according to rank; pigtail; Chinese shoes and fan. It should be a real dress from the country.

CHOCOLATI, SIGNOR. Black cloth tunic; knee-breeches; filigree buttons; Spanish leggings.

CHRISTIAN, PRINCE (from the *Fable of the Marsh King*). White cashmere tunic and short skirt, embroidered in gold; gold fringe; large gold cross on breast; scarlet cashmere cloak, with stars; black velvet shoes; mauve silk tights; long flaxen wig.

CHRISTMAS, FATHER. Long loose robe of white, red, or brown cloth, with hood, the shoulders covered with

tufts of frosted wadding, a belt round waist; wallet, staff, white hair and beard; holly wreath. In Germany he wears high black boots, a red habit, gathered at the waist, fitting the body closely, a belt round, and a cap and cape of the same, pointed, coming well into the neck, and just showing the face and beard. He carries a fir-tree. A good rendering of **King Christmas** is as follows:—High leather boots, bound with ermine; red silk stockings, with holly embroidered for clocks; red velvet robe, bordered with ermine, a belt of holly round; gauntlets; pendant sleeves; gold crown and flowing hair.

CHRISTY MINSTREL. Black face, woolly hair, enormous collar, extravagant bouquet, long-tailed coat of striped calico, mess jacket, black trousers; banjo.

CLAUDE DUVAL. Long scarlet coat, with mosquito-taire cuffs, turned up with white, gold trimmings and buttons; square pockets at side; lace sleeves; white under-coat trimmed with gold; black leather belt, with brass buckles, revolvers at each side; white doeskin trousers; high black boots, with spurs; linen collar and lace tie; hilted sword; black cocked hat; hair tied with black ribbon. *See Fig. 9.*

CLAVERHOUSE. Long curled wig, tricorn hat and feathers, scarlet embroidered coat, no waistcoat visible, white knee-breeches, and long top-boots.

CLOCK. Classic robe of white cashmere, with cape and hood; VIII. on the hood, shoulders, and back; dials, with hands pointing to the hour, on back and on knees, the latter having weights attached. High pointed cap with the hours round. Wand in hand with 24 upon it.

CLOWN (ordinary). Black, red, or white shoes; white stockings, with blue or red clocks; white calico full trousers, with frills at knee; and close-fitting dress, fantastically ornamented with blue and red. Face painted white; triangular patches of red on either cheek; very red lips. Close curling wig; stiff red points from back of head, which shake at every movement. *See Fig. 10.* **Æsthetic Clown.** The white calico costume is powdered with sunflowers and Nankeen China plates and teapots; tall conical cap with a peacock's feather at point, peacock feather fan, small reticule, and sunflower in hand. (In **Louis XV.**'s reign.) Loose trousers to knee; full jacket with large collar, confined at



9. Claude Duval.



10. Clown.



11. Pierrot.



12. Peppe Nappa.

waist by belt; sleeves to wrist, with pendant ones over hand, all made in white merino, piped with red, and large red buttons in front; white felt pointed hat with coloured ribbon. **Pierrot** (French Clown). Large loose trousers and blous, with full collar, made in white calico, with a row of coloured rosettes down front. Face painted. Conical hat. *See Fig. 11, p. 18.* Another French clown has the hair powdered, and stands up in a remarkable point in front. The blue cut-away coat has a double cape and mosquetaire cuffs; long waistcoat, of red and white stripes, comes nearly to the knee; black breeches, with a knot of yellow ribbons; blue and white stockings; black shoes; huge white necktie. *See also POLICHINELLO.* **Peppe Nappa** (Sicilian Clown). Wears light blue; a grey hat, and kid shoes; the sleeves hang over the hand; the close-fitting jacket has a ruff. *See Fig. 12, p. 18.*

COACHMAN in livery, with top boots and caped cloak.

CŒUR DE LION. Same as Crusader, with three lions embroidered on surcoat. *See large Illustration I.*

COLE, KING. Fat burly figure in a flowing brown robe bordered with ermine; over and under-dress confined at waist by belt; large beard; velvet cap bound with ermine.

CONSPIRATOR, FRENCH (during Reign of Terror). Mauve satin coat, made short-waisted, with swallow-tails reaching to the heels; a profusion of ringlets falling over the face; chin concealed in large muslin necktie; breeches and silk stockings.

CONTI, PRINCE DE (*Les Pres Saint Gervais*). Costume of white cloth and crimson velvet embroidered in gold; silk stockings; black shoes and buckles; powdered hair; sword; mosquetaire gloves; cocked hat; lace cravat; white silk stockings embroidered in black; breeches of blue silk; waistcoat embroidered with flowers; blue coat embroidered in gold.

CONVICT. Manacles on wrist and ankles; carries a jemmy; wears parti-coloured yellow and grey woollen suit, cap, scarf, knickerbockers, with a number and five years' badge on his arm; grey and red stockings; hair short.

COOK. Suit of white linen; shoes; stockings; knee-breeches; blouse with frilled collar, or tail coat; round cap; apron, the corner tucked in at waist, sometimes decorated with blue ribbon (*cordou bleu*) stamped all over with bills of fare, or a saucepan is worn round neck. *See Fig. 13, p. 21.*

COOK, PASTRY. The same, carrying a wooden tray filled with fancy cakes.

COURT SUIT (REGULATION). Whether of cloth or velvet is admissible at most fancy balls. Old court suits, with embroidered waistcoat, ruffles, the coat with steel buttons, and bag wig can easily be transformed into some full dress costume of a past century.

COURT DRESS, 1779. A long square-cut blue and white coat without collar, large pockets ornamented with gold lace, and large buttons; waistcoat with long flaps in white and gold; white breeches; lace ruffles; neckcloth; high-heeled shoes; three-cornered hat, and sword. To be made in gay-coloured silk or satin. Powdered hair, bag-wig.

CROATIAN. Red cap; hair curling on shoulder; sur-tout of dark-coloured woollen material, red band across chest, wide brown sash round waist, red velvet purse attached; green velvet jacket trimmed with gold braid, gold ornaments on sleeves and collar; leather thong supports a pistol; tight trousers to knee; coarse woollen stockings and buskins; buckles on shoes; large caped cloak on shoulders.

CROMWELL. Leather boots high to the knee; full baggy trousers thrust into them; leather jerkin, belt, and gauntlets; steel gorget; felt hat. Dress of time *see* ROUNDHEAD.

CROSSING-SWEEPER. Old hunting-coat, shabby trousers, wooden leg, patch over one eye, broom in hand.

CRUSADER. Suit of chain armour; leg gauntlets, and helmet, with mail coif; surcoat of white cloth, with red cross, flowing white cloak; cross-hilted sword and belt; or a suit of velvet, with cap richly embroidered, with lions on the breast; cloak, sword, &c. *See* Plate I.

CUPID (suitable for a very young boy). Flesh-coloured silk vest and tights; shirt of blue and silver; garlands of roses across breast and round waist; wreath of same on head; golden bow slung at back; gold sheath of arrows at side; pair of wings at back.

CURE, THE. Blue and white, or red and white, striped calico suit, consisting of long trousers and loose jacket, with high conical cap.

DALMATIAN. Double-breasted crimson vest trimmed with yellow ; white cloth coat ; sash round waist with pistols and dagger ; trousers to knee ; woollen stockings ; embroidered leather boots ; red fez.

DAMOISEAU. Red silk tights ; red satin under-dress ; red silk handkerchief twisted round the head, and a felt hat above it ; black velvet sleeveless habit, bordered with gold, cut square at neck showing red under-dress and sleeves ; belt round the waist with buckle.

DANISH FISHERMAN. Worsted stockings ; yellow breeches ; long red and blue striped jacket with many buttons ; brown coat and buttons ; fisherman's cap of red and blue.

DANISH PEASANT. Trousers and undercoat of red cloth, white overcoat, like a frockcoat, but cut out at neck, bordered with gold braid, a red belt round the waist ; satchel at the side embroidered in gold ; red cloth and gold braid on the cuffs of coat.

DARNLEY, LORD. Velvet jacket, trunks, and cloak slashed with satin ; and embroidered hat with plume ; silk hose ; jewelled belt ; lace ruff and ruffles ; chain and necklace with orders. The style of dress would be the same as **LEICESTER.** See Plate VI., p. 36.

DAVID, GARRICK. White satin vest trimmed with silver lace ; white kerseymere pantaloons ; enamelled leather top-boots ; three-cornered hat ; black velvet coat lined with white satin ; gauntlets ; cuffs, lace frills and tie, and silver lace trimmings ; silk stockings ; sometimes shoes with buckles instead of boots ; powdered hair.

DAVID, KING OF SCOTLAND, 1335-1371 (the costume worn by the Duke of Roxburghe at the Queen's Fancy Ball, 1842). Suit of mail with a surcoat of cloth of gold, embroidered with lions rampant. Instead of helmet the regal diadem of Scotland ; mantle of crimson velvet lined with ermine ; sword belt and jewelled sword.

DEBARDEUR. Velvet jacket and trousers with Maltese buttons ; scarf round waist ; velvet cap ; full cambric shirt ; silk stockings ; black shoes ; coloured silk scarf. Occasionally neither jacket nor cap are worn. See Fig. 14.

DIABLE. *See* MEPHISTOPHELES, SPRITE.

DIABOLO, FRA. Green velvet coat and breeches embroidered in gold; cherry satin facings; white satin vest; cherry sash round waist; brigand hat with coloured ribbons.

DICK HATTERICK THE SMUGGLER (*Guy Mannering*). Scarlet cap; mauve and white striped shirt, white full trousers; sea boots; buccaneer jacket; black leather belt; pistols; sea-knife.

DICK TURPIN. Scarlet coat and waistcoat, with gold braid and buttons; lace cravat and ruffles; high jack-boots; leather breeches; three-cornered hat and flowing wig; belt and pistols.

DIRECTOIRE. Long cloth coat with large pockets and deep collar and revers; flowered silk waistcoat; lace cravat and ruffles; nankeen trousers above the spotted socks; low shoes and high heels and buckles; red silk umbrella; felt hat.

DOCTOR (in *Ballet of Cinq Mars*). Black silk tights; black satin shoes; red satin garters and bows; bodice and trunks of black satin slashed with red; belt ornamented with red satin bows; shoulder cloak of black satin lined with red, uff at throat; black velvet toque.

DOGE OF VENICE. *See* VENETIAN. The chief feature of the dress is a large cloak with ermine cape.

DON CÆSAR DE BAZAN (*Maritana*). First dress: old velvet suit of biscuit-coloured cloth; high boots; full trousers; short habit; flowing wig. Second dress: more elaborate in rich silver and grenât velvet, but of same make.

DRAGOMAN. *See* EGYPTIAN.

DRAKE, SIR FRANCIS. Violet velvet doublet slashed with violet satin; violet hose, cap and feathers. For style, *see* LEICESTER, Plate VI., p. 36.

DRUID. Long flowing white robe; wreath half around the head; girdle at waist.

DUDLEY, EARL (*temp.* Queen Elizabeth). Ruby velvet tunic trimmed with gold; trunks of same slashed with white satin; embroidered shoulder-cloak with five rows of lace; small hat and plume; jewel embroidered tights; puffed shoes; jewelled sword and dagger; lace ruff. For style, *see* LEICESTER, Plate VI., p. 36.

DURER, ALBERT. *See* ALBERT.

DUTCHMAN. Full trousers to knee ; worsted stockings ; brown jacket over waistcoat ; broad felt hat or tasselled cap.

EDGAR OF RAVENSWOOD. Velvet coat and breeches ; satin vest ; high brown leather boots ; lace necktie and ruffles ; velvet shoes ; hat with ostrich feather ; sword.

EDWARD BLACK PRINCE. Steel armour and steel zone ; black cloak ; white plume ; and motto, "Ich Dien."

EDWARD III. Doublet of red velvet, close fitting, falling below waist ; belt buckled across hips, with sword attached ; red hat ; long cloak reaching to the ground ; pointed shoes ; silk tights. *See* Plate II. **Civil Costume of High Officer of State** (as worn by Earl De La Warr at the Queen's Fancy Ball, 1842). White satin habit, embroidered all over with family badges, the border scalloped ; tight sleeves buttoned with gold ; gold belt or girdle ; blue hose and pointed shoes ; crimson velvet mantle lined with cloth of gold ; ermine round throat ; gauntlet gloves. *See also* PERCY.

EDWARD VI. Blue velvet coat trimmed with gold ; sleeves puffed with white satin ; trunks of the same ; sword-belt ; velvet shoes, puffed with satin ; blue cap ; white plumes.

EGYPTIAN DRAGOMAN. Full blue braided trousers ; short braided jacket over gold braided vest ; shawl about head ; yellow leather shoes.

EGYPTIAN, NATIVE. Long full robe, with sash round waist ; over the head and falling on the robe a drapery of contrasting colour ; turban above this. Colour should be bright.

EIGHTEENTH CENTURY, DRESS OF. The following costumes will give an idea of what was worn at this period:—**Gentleman, 1730.** Coat and knee breeches of rich blue watered silk, trimmed with gold embroidery ; white satin vest embroidered with gold ; point lace ties, and cravat ; powdered hair and three-cornered hat ; drab overcoat ; cape of black velvet ; pants, and Hessian boots. Or, sky-blue velvet coat ; silver embroidered breeches ; white silk stockings and pumps ; powdered wig, and sword. **Soldier in Dillon's celebrated Regiment of the Irish Brigade, in the service of France in the year 1740.** A single-breasted scarlet cloth:

tunic, with black gauntlet cuffs; skirts faced with white cashmere, looped back, and fastened with a button in centre; waistcoat of scarlet cloth, with cipher flaps; plain gold buttons on tunic and waistcoat; breeches of white kerseymere; leggings of white drill, tight fitting and reaching to the thigh; cocked hat, with plume, and richly mounted sword.

ELIZABETH'S REIGN, COURTIER OF. Black velvet tunic and trunks, puffed with lavender satin, braided with gold; short cloak to match; belt and dagger; cap and plume; silk tights; shoes; ruff; various mixtures of colour admissible. For style, *see* LEICESTER, Plate VI., p. 36.

ESCAMILLO (*Carmen*). Spanish dress, *see* MATADOR. Spanish velvet jacket over a satin vest; satin knee-breeches; silk scarf round waist, fringed with gold; silk stockings; low shoes red cloak; black Spanish hat.

ESSEX, EARL OF (*temp.* Elizabeth). Close-fitting doublet buttoning up the front to neck, finished off with close ruff; sword-belt and sword; puffed trunks, long silk hose; short cloak from shoulder; low-crowned hat and feather; pointed shoes; carried out in bright-coloured velvet, slashed with satin. For style, *see* LEICESTER, Plate VI., p. 36.

ETHIOPIAN SERENADER. *See* CHRISTY MINSTREL.

EVENING DRESS OF THE FUTURE—viz., white where it is now black, and *vice versa*; white evening dress coat and trousers; black shirt; tie and collar, &c.

EXECUTIONER. Tights, trunks, and *juste-au-corps* all black black mask and skull cap; an axe carried in the hand, and axes embroidered on close-fitting habit and cap.

FALCONER. Cap with heron's crest and eagle's feather; dark green frock embroidered and faced with scarlet; scarlet hose. On wrist, a martin belled and hooded, lure and tabour; belt at waist; gauntlets.

FALSTAFF. Velvet cap and feathers; leather jerkin; belt; top boots; ruff and sword; wearer to be enormously fat.

FATHER'S DARLING. To be worn by a grown man. Child's tunic; frilled trousers; sandalled shoes, with socks; the skin covered with tights; a hoop in hand; large pinafore.

FAUST. Tight-fitting doublet and shoulder-cloak of velvet and satin slashed and embroidered; trunks and long silk tights; gold belt with jewelled sword, collar, and Order; velvet cap and plumes.

FERAMOEZ (*Poet of Cashmere*). White gauze and silver turban with jewels; satin jacket embroidered, having hanging-over sleeves; under-vest and sleeves of brocade; full white lawn shirt, showing Indian scarf round waist; velvet trousers with silver buttons to the knee; silk stockings; small low shoes; a guitar in hand.

FIGARO (*Barber of Seville*). Dark green velvet Spanish jacket embroidered in silver, silver braid epaulettes; white satin waistcoat; green velvet breeches with pink ribbons; pink sash with silver fringe; necktie; Spanish hat; pink bows on shoes; white silk stockings. Mandoline in hand. *See also* BARBER OF SEVILLE.

FISHERMAN. *See* BARRI, CATALAN, DANISH, ITALIAN, OSTUNIAN, NEAPOLITAN.

FLY COSTUME FOR BOY OF FOUR. Golden yellow satin skirt, ornamented with black braid, and studded with small gauze flies. The short upper skirt forms a sort of long basque, and is sewn to the waistband; rows of gold braid across the high bodice, and round the short sleeves; loose jacket ornamented with gauze; fly in the centre of back, and smaller ones in front; black velvet toque, with gold band round, a gold fly fastening down aigrette.

FOOL (Shakespeare's play). Stockings gartered with various coloured ribbons; loose habit to knee of red and blue stuff; belt at waist; pouch; cloak on shoulders; a dentated crown round head, from which rises a fool's cap and bells.

FOOL AND FUN. *See* JESTER, and Illustration, Fig. 16.

FORESTER. In green habit, with bow and arrows. For make of the dress *see* ROBIN HOOD. *See* Fig. 24, p. 48.

FORTUNIO, DON. Mauve velvet doublet, slashed with white satin and gold fringe and point lace; trunks to match; belt and gold-hilted sword; velvet shoes, with silk hose; hat, with ostrich plume.

FRA DIAVOLO. Black velvet jacket and breeches, handsomely trimmed with gold and silver; scarlet velvet vest, embroidered with gold; silk stockings, crossed with blue and red ribbons; pointed brigand hat with feathers and ribbons; garters trimmed with gold; belt. *See* DIAVOLO.

FRANCIS I. AND HIS TIME, 1515-1536. The King: suit of steel armour inlaid with gold, crimson surcoat embroidered, helmet with jewelled crown and yellow plume. Also vest, cloak, and French hose of purple satin, slashed with orange, embroidered in gold braid. Purple and orange hat, with plume and diamond aigrette. **Gentlemen:** doublet, trunks, and cloaks of satin and velvet; Spanish hat and plumes. Sleeves and trunks much slashed and puffed; silk hose; velvet or satin shoes, square at toes and slashed.

FRANK CASTLEWOOD. Red coat, with black satin front and gold facings and buttons; blue satin waistcoat with gold facings; white breeches; black gaiters; bag wig; cocked hat; sword.

FRENCH COURTIER, 1776. Coat of dark blue broadcloth, with gold embroidery; white kerseymere breeches, with gold braiding; short sword; low shoes, with silver buckles.

FRENCH HUNT COSTUME OF NAPOLEON III.'S TIME. Green coat, silver buttons, scarlet velvet collar, the facing and seams covered with gold and silver lace; scarlet vest; breeches of white doeskin; heavy boots, above the knee; Louis XV. hat, called *lampion*, trimmed with gold and silver.

FRIAR TUCK. Brown serge monk's robe, with rope girdle, rosary attached; cowl. *See* MONK.

FRITZ, SERGEANT (*Grande Duchesse*). Coat of white cloth, with collar, broad cuffs, and facings of black velvet, studded with white buttons, and bound with scarlet galloon; Louis XV. waistcoat of scarlet cloth, with gold braid and buttons; knee-breeches of white cloth; white gaiters with gold buttons and velvet garters; shoulder-belt and musket; high cap of scarlet cloth, elaborately trimmed with gold braid, small scarlet feather.

FROG, PRINCE (from *Fairy Tale*). Loose tunic, confined at waist by girdle, long pendant sleeves; tights and trunks, the whole embroidered with sun-flowers; cap to match.



Garde Française.



Period of George II.

FUTURE GENTLEMAN OF PERIOD, 1984.

Evening dress coat, with lappels, collar and cuffs trimmed with sky-blue silk, gilt buttons; shirt and frill, large muslin bow with star of brilliants; white waistcoat and gilt buttons; black knee breeches, and black silk stockings; shoes, and sky-blue rosettes and buckles, straw-coloured gloves, fan, bouquet, and scent-bottle.

GAMEKEEPER (in *Pickwick*). Brown velveteen coat and gilt buttons; corduroy trousers; stout gaiters; game-bag slung on shoulder.

GARDE FRANCAIS. Dark blue cloth coat, ornamented with gold buttons and straps of gold galloon; white leather belt fastened with gold buckle, turned back sides forming revers, lined with blue silk, displaying striped waistcoat; white kid gaiters, buttoned above knee, over breeches; blue satin garters; black cocked hat, with blue satin bow; powdered peruke and pigtail; long gold-hilted sword. *See* Louis XIV. and XVI. *See* Plate III.

GARIBALDI. Red shirt and grey trousers, with silver stripe; hat with ostrich feather.

GENDARME (*Genevieve de Brabant*). Blue cloth tunic with shirt of mail, and steel necklet above; gold band round the waist, sword attached; blue worsted tights with steel kneecaps; cloth gaiters and shoes; large felt hat, turned up in front.

GENTLEMAN OF THE FUTURE. *See* EVENING DRESS OF THE FUTURE.

GEORGE I. AND II. (*Temp.*). Long coats and deep waistcoats, with mosquetaire cuffs and flap pockets, made in satin or velvet, richly embroidered or braided in gold and silver; pointed shoes; silk stockings; lace ruffles on sleeves; a sword carried at the side; the hair powdered. *See* Plate IV. **Period George II. and George III.** *See* CHARLES SURFACE, Fig. 28, p. 54.

GEORGE IV. Court suit of dark mulberry coat, with steel buttons; white satin embroidered vest; knee-breeches; white silk stockings; shoes and buckles; powdered wig; *cha-peau bras*; laced cravat and ruffles.

GERMAN PEASANTS. Knitted stockings; green satin knickerbockers to knee; long red vest, no fastening

showing; black over-jacket, and turn-down collar with frill. **Austrian.** Knee-breeches of black velvet; scarlet waistcoat, and long white jacket. **A Mecklenberg Bridegroom** wears a white cord round his hat, and ten white buttons to his vest; a large pink cravat; knee-breeches; white woollen stockings, and a loose velvet jacket. A man's dress at **Starnberg** is a long-skirted blue coat, reaching to the heels; red waistcoat; black breeches.

GILPIN, JOHN. High boots and breeches; long waistcoat; frilled shirt; blue coat and brass buttons; black necktie; high hat.

GIPSY CHIEF. Black shoes; worsted stockings; corduroy breeches; red waistcoat; turn-down collar; spotted tie; ragged coat; red fancy shirt.

GLOUCESTER, DUKE. *See* CHARLES I.

GLOUCESTER, RICHARD, DUKE OF. Velvet coat bordered with fur over habit of velvet, cut square at throat; gold belt, and tights.

GONDOLIER. Black satin shirt with red plastron; sailor collar and cuffs; trousers of red and black striped satin; red silk sash round waist; black satin hat, gold band, with red tuft.

GRÆME RONALD. White satin cap with ostrich feather; doublet and trunks of pearl satin, trimmed with gold, slashed with cardinal; cloak of pearl satin, lined with sky blue; jewelled dagger; white silk stockings, shoes, and rosettes.

GREEK, ANCIENT. Robe of soft wool fastened on shoulders, under this a loose rope girdled at waist; bordered round the neck and elbow sleeves with gold; gold band on head.

GREEK, MODERN. White plaited fustanetta, or petticoat; wide silk belt, ornamented with gold; short embroidered vest, fastened at neck; jacket; full trousers to knee, and gaiters; fez; dagger stuck in belt. To be made in satin, cashmere, or cloth.

GREGOIRE (*Niniche*). Yellow duck trousers tucked up; striped black and white shirt, with braces; face very red

GRESHAM, SIR THOMAS. Violet velvet and satin Elizabethan costume. *See* LEICESTER, Plate VI., p. 36.



King of Hearts.—Red velvet and ermine robe, red velvet breeches, and undervest of white satin showing red velvet hearts; blue order across the breast, orb carried in hand, velvet and ermine cap surmounted by crown.

4 MAY 1890

GUARDS, ROYAL HORSE, CHARLES II.'S TIME. Dark blue coat, richly embroidered in gold, turned up with red; buff leather breeches; cavalier boots; broad crimson sword and belt covered with gold embroidery, worked with royal cipher. **Guards, Life and Horse.** Red tunics, larger than those of to-day, with two stripes of gold lace, and a cuirass with a blue velvet baldrick embroidered with the cipher C.R. under the Arms of England; broad blue silk sash; buff boots; large falling lace collar; gray hat; white and red feather; long hair; blue coats with red facings. **Guards, Foot, of 1845.** White gaiters above knee; red tunics turned up at the corners with blue, and barred in front with lace.

GUIDE DES EAUX BONNES. Black velvet breeches; scarlet coat; white vest; embroidered pouch; brown hat, with a coloured tassel; light gaiters; shoes and buckles; whip, with bells.

GULLIVER. Black shoes and buckles; silk stockings; breeches, waistcoat, and necktie; Georgian coat, with mosquetaire cuffs; watch at fob; lace ruffles.

HAMLET. Long black cloth cloak; scalloped black velvet jerkin trimmed with jet; sleeves puffed at shoulders and slashed; black velvet sword-belt, and bonnet with black plume; black silk tights; black velvet shoes slashed with satin; lace frill at neck and wrists.

HAROUN EL RASCHID. Embroidered green satin tunic, with robe of violet satin embroidered in gold; gold waist-belt studded with jewels; turban with crescents of rubies and emeralds.

HARLEQUIN. Close-fitting skin-tight dress of red cloth and spangles; cocked hat and mask, or cap and mask; low pointed shoes; black wand.

HAROLD, KING. Cashmere tunic, with gold lace; long blue cloak with white trimmings; blue cap with gold lace; red stockings with leather thongs; sword; red and gold belt.

HEADSMAN. See EXECUTIONER.

HEARTS, KING AND KNAVE OF. See CARDS.

HENRI DEUX, 1547. Doublet trunk hose and cloak over left shoulder of lavender satin and merino, embroidered

with silver braid; lace ruff and cuffs; white silk tights; satin shoes and buckles; cap, silk feather, and sword; silver ornaments.

HENRY III. OF FRANCE. Flat velvet cap, with aigrette; Spanish ruff; long-waisted doublet of white satin, padded and stuffed like the trunk hose about hips; short Spanish mantle; brocaded breeches to the knee; silk stockings; pointed shoes, with rosettes; gold chains round shoulders. He was very vain of his personal appearance, and painted his face red and white.

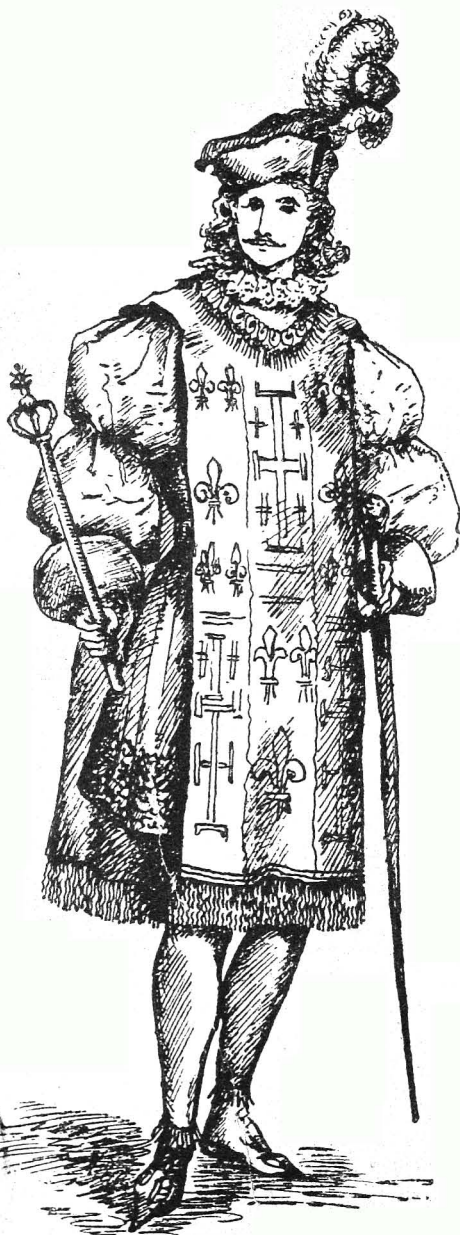
HENRY IV. Black velvet doublet and trunk hose; black silk stockings; scarlet sash for sword-belt; blue ribbon and gold Order; white cuffs and frill. **Esquire or Page in Hunting Costume of Henry IV.** Fawn doublet, with hanging sleeves; under-sleeves; epaulettes; and edge of doublet light green; scarlet belt and pouch; black velvet trunk hose; fawn stockings, and shoes with green bows; black velvet cap, with scarlet edge; white feather. **Dandy of the reign.** See ROQUELAIRE.

HENRY V. (HARRY HOTSPUR). Black velvet tunic, with coat of mail studded with precious stones; trunk hose of black velvet slashed with red satin; pointed boots, with gold embroidery; white cashmere cloak, with red hood; black velvet turban cap, trimmed with gold lace and tassels; lace ruffles; jewelled sword.

HENRY VI. Felt hood, with short tippet and single feather; doublet of braided silk cut round even with the shoulders; a separate scarf; loose sleeves trimmed with fur; light hose; high boots of brown leather; long-toed, and spurred.

HENRY VII. Short doublet open in front; triangular stomacher; plaited skirt from waist to knee of cloth, velvet, or brocade; surcoat plaited at back, with ample sleeves, trimmed with fur; breeches, cloth; stockings; square-toed shoes.

HENRY VIII. Full-skirted doublet of velvet and satin with gold trimmings and ruffled sleeves to wrist; cloak trimmed with ermine; tights and trunks; jewelled sword-belt; Order of Garter; broad-toed slashed shoes; low-crowned velvet hat with feather; jewelled dagger. The costume in which



Herald.

the King received Anne of Cleves was as follows:—Coat of velvet embroidered all over with flatted gold damask; small lace of the same gold mixed between, and other laces of the same going transversewise so that the ground white appeared, and about this garment was a rich guard or border very curiously embroidered; the sleeves and the breast were cut and lined with cloth of gold, and tied together with great buttons of diamonds, rubies, and Orient pearls. **Dress of Period, Henry VIII.** Doublet of cerise velvet and silk, in black and white stripes, sleeves puffed and slashed; a brimmed cap jewelled and bordered with feathers; ruff; ruffles; close-fitting stockings; square toes. *See JESTER OF HENRY VIII.'S TIME.*

HERALD. With silk tabard, the royal arms quartered front and rear; ruff round the throat. At the Queen's Ball in 1842, as Herald of Louis XII., Baron Lebzelter wore blue velvet tunic bordered and fringed with gold; shoes slashed with white satin, fringed with gold round top; blue hose; blue velvet cap turned up with cloth of gold, ornamented with bands of blue and yellow, and ostrich feathers; over this tabard arm. *See Plate V.* Another Herald's dress:—White felt hat with feather; tabard coat of yellow, green, or blue, with the arms embroidered in gold or silver; shoulder-jacket of contrasting colour; light silk hose; trousers striped or parti-coloured; trumpet carried in hand.

HERMIT. Similar dress to monk, with cowl over head; staff in hand. *See MONK.*

HIGHLAND DRESS, AND HIGHLAND PIPER.
See Sc

HOLLANDER. *See DUTCH.*

HUMPTY DUMPTY (in dress of Edward III.'s time). Yellow pointed shoes and stockings; short blue breeches; loose habit Vandyked round, confined at waist by belt, the sleeves very long and pointed; a blue hood worn on the head, Vandyked round; a basket of eggs in hand.

HUGUENOT. Shoes with rosettes; silk tights; trunk hose; close-fitting habit; large cloak, lace collar over; hat with pointed crown, broad brim and feather. Or silk stockings; tight breeches; long-skirted coat with revers at neck; vest; ruff; low-crowned hat.

HUNGARIAN. High boots; blue trousers, embroidered with silver; military jacket, also embroidered, slung from shoulder; fur-bordered pelisse; round fur cap, with high feather.

HUNTER, LOUIS XV. Light blue silk stockings and black buckled shoes; knickerbockers in russet-brown serge; and habit, with flame-shaped pendant sleeves, cap, and white aigrette; Russian leather boots.

HUNTING DRESS, LOUIS XIV.'s TIME. Black shoes; silk stockings; breeches to knee; long coat trimmed with gold braid in front, sash round waist, wide sleeves, turn-back cuffs, puffed white sleeves and ruffles beneath; lace tie; curled wig.

HUNTSMAN. Black velvet blouse and breeches, with buckskin gaiters fastened with steel buckles; a game bag at one side and a pocket on the other; felt hat with pheasant's feathers.

HUNTSMAN, TIME OF CHARLES V. Jacket and shorts of brown velvet, with puffed sleeves of the same coloured satin; top boots; brown velvet hat, cluster of diamonds at the side.

IAGO. Yellow silk short cloak lined with black; a leather doublet; short trunk ending above knee; dark red hose; sleeves slashed with black; red cap.

INCROYABLE. Short-waisted long brown coat with wide lappels; yellow satin waistcoat; cloth breeches; blue ties at knee; striped stockings and shoes; a watch and watch-chain hanging at both sides; lace frills at wrist and neck; large necktie; cocked hat. *See Fig. 15, p. 21.*

INDIAN. Long silk tunic embroidered in gold, with rows of pearls round the neck; scarf about waist; overdress of fine wool embroidered with gold; green silk stockings worked in gold to match pointed shoes; ornaments, armlets, anklets and bracelets, all heavily jewelled.

INDIAN CHIEF. Skin with fur round waist, fastened with coloured scarf; mocassins coming well up leg, ornamented with coloured quills; fleshing over upper part of bodice; neck lace and collar of beads, and feathers; large fur cloak; toma hawk. *See SIOUX INDIAN and NAWAB OF MOORSHEDABAD.*

IRISH CAR-DRIVER. Green coat patched with cloth, brass buttons; brocaded waistcoat; drab breeches with patches; high collar and red tie; blue darned stockings; leather shoes; hat trimmed with green and sprigs of shamrock.

ITALIAN. Wears stockings crossed over with coloured ribbon; blue cloth breeches, buckled at the side; a leather waistcoat fastened with silver, steel, or leather buttons, and cut low and straight, showing the shirt; a short jacket bordered with gold, and a pointed hat with ribbons; coins and amulets. The *Pifferari*, in addition, have a long brown caped cloak, and carry their musical pipes. *See PIFFERARI.* The *Italian Fishermen of Naples and Barri, Masaniello, &c.* (*see BARRI, MASANIELLO, &c.*), are represented with silk tights, striped trousers rolled up well over the knee; a shirt of the same, open at the neck to show charms; earrings in the ears; a red or brown cap; and a brown jacket slung from the shoulders; a scarf round waist. *See ITALIAN BRIGAND and MILANESE NOBLE, 15TH CENTURY; SHEPHERD OF ABRUZZI.*

JACK (AND JILL). Jack, in a smock frock and round felt hat, or in breeches and long waistcoat; long-skirted velvet coat; linen shirt; velvet cape and hat; ruff at throat; red rosettes on each cuff, and corner of coat. Both carry pails.

JACK AND THE BEANSTALK. Leather shoes; blue stockings; brown breeches; close-fitting coat buttoning down the front, with scarlet-runners embroidered on it; red and brown wide-awake hat and feather; blue striped shirt; apron.

JACK HORNER. Blue breeches; long waistcoat; long-skirted red coat, with gold buttons down the front and on the wide turn-back cuffs and pockets; black tricorn hat bordered with gold braid; a plum dangling from watch chain.

JACK (THE GIANT-KILLER). Blue trunk hose; close-fitting red coat, with short basque confined by belt at waist; sleeves tight to wrist, a puff at the top slashed; helmet on the head; carrying a shield and sword.

JACQUES (*As You Like It*). Large hat; loose grey cloth habit with belt; breeches to match; thick shoes; coarse stockings.

JAMES I. Long curled wig; satin suit, made with full breeches to knee, but considerably smaller than those worn

in Charles II.'s time; close-fitting bodice, like a waistcoat, forming two points at waist; epaulettes, and tight sleeves with cuffs; long cloak from shoulders; a turn-down triple collar.

JAMES EDWARD, PRINCE, SON OF JAMES II. (*after* N. de Largillière). He died in Paris, 1746. The costume of the Prince of Wales resembles the one worn by courtiers towards the end of Charles II.'s reign. Wig formally curled, and no longer flowing; three-corned hat, low in the crown and wide in the brim, with feather edging; a neckcloth or cravat of Brussels or Flanders lace, tied in a knot under the chin, the ends hanging down square; short doublet or coat of dark green, blue, or drab cloth, with buttons and button-holes all down the front, the cuffs and pockets similarly adorned; the skirts of the coat terminating above the knees, and its sleeves reaching to the elbows, with shirt sleeves bulging forth, ruffed and adorned profusely with ribbons and lace; the breeches of dark velvet, in the shape of short trousers loose to the knee, with a fringe of lace or a cambric edging; blue or scarlet silk stockings, with silver clocks; high-heeled lace-edged shoes, with diminutive buckles in front fastening a lace bow to instep.

JAPANESE. Loose robe of yellow and gold satin worked with birds; loose orange trousers embroidered with gold. It is better, if possible, to obtain a dress from the country; any attempt to produce the embroidery in England would result in failure.

JEAMES. Blue livery coat, faced with yellow; yellow breeches; shoulder-knots and tags; powdered hair.

JEANNOT. Coat and breeches of light brown, trimmed with bands and buttons of magenta; yellow waistcoat embroidered; cambric shirt; magenta stockings; black shoes; felt hat, bound with red and turned up in front.

JESTER OF COURT, HENRY VIII.'s TIME. Coat and breeches of blue and white cashmere; sleeves of the same lined with crimson; cap of blue and white cashmere, the whole covered with bells. *See* FOOL.

JESTER, FOOL, FUN, AND FOLLY. Pointed shoes, or boots with double flaps, back and front; tights, the legs of different colours; parti-coloured short breeches; close-

with basque cut in points bordered with gold, a point; sleeves with epaulettes, having the same bells; hood, with cape of two colours, also cut A fool's bauble in the hand. Red and blue is the ure, also green and gold, amber and blue, amber
See Fig. 16, p. 21.

IN (*Fortunes of Nigel*). Tight-fitting dress of slashed and satin; sword; curled hair; ruff, and embroidered

JKEY. Top boots, with spurs; satin breeches, jacket ap of two colours. Whip in hand.

JOHN BULL. Top boots and breeches; long coat; crowned hat.

JOHN, LITTLE. Green cloth doublet, pendant green tin sleeves, tight ones beneath, all trimmed with squirrel fur; green breeches, slashed with satin; green stockings and buckskin shoes; green velvet cap, with eagle's feather; hunting horn and knife.

JULIAN (*Peveril of the Peak*). Tights, shoes, loose breeches above knee, with frill; frilled shirt; open coat; wide, turned-down collar, and long neck-tie; sleeves with lace cuffs; hair curling on shoulders.

JULIUS CÆSAR. Rich Roman dress; gilt helmet; red and gold tunic, and toga; tights, sandals, and buskins; a short, gathered skirt below the close-fitting habit; bare arms and throat; shield.

JUPITER. White silk tunic, embroidered in gold, a large sun on breast; jewelled girdle; long hanging sleeves over shorter ones to elbow; white silk tights, with stars; crimson satin mantle, fastened round throat; jewelled tiara; sceptre in hand.

KING (in *Sing a Song of Sixpence*). Long flowing mantle trimmed with gold braid or fur; puffed satin dress and breeches; silk stockings; diadem on head, sceptre in hand.

KING OF THE FOUR SUITS OF CARDS. *See CARDS.*

KINGS OF ENGLAND, FRANCE, AND SPAIN.
See under their different titles.

KNAVE OF CLUBS, &c. See CARDS.

KNIGHT OF MALTA. Silk shoes and black puffed trousers and jacket with ruff; red ruff waist, bordered gold braid, a cross on either side; fl hat and feather. For a boy, a ruff and cloak over dress would suffice, if a saving of time and trouble object.

KNIGHT TEMPLAR. Suit of armour, or suit of white satin, with velvet cross in crimson; cloak of white with the same; silk tights; boots; white satin sash with belt and cross sword; collar of beads with cross; headpiece with feathers.

LAMBTON, MASTER (*Sir Thomas Lawrence*). Suit for a boy. Loose black velvet jacket, with rows of buttons on either side, sleeves to wrist, with turn-back cuffs; under-vest of velvet very open, showing large frilled turn-down collar; fl velvet breeches to knee; silk stockings; black shoes.

LEICESTER, EARL. Magnificent costume of Elizabeth's reign. Doublet and trunks of satin and velvet embroidered in gold; velvet shoulder-cloak lined with satin; long silk stockings; ruff; sword-belt and sword; velvet cap with plumes; shoes with jewels; jewelled garters. This may be carried out in various colourings:—Dark blue and white, black and blue, green and gold, black and violet. See Plate VI.

LEPORELLO. Green satin jacket, fastened round waist with belt, and trimmed with ball fringe; epaulettes; trunks to match and breeches to knee; white linen collar and cuffs; white stockings; low shoes; broad hat; large cloak.

LIONEL (*Martha*). Maroon silk velvet tunic, sky-blue satin facings trimmed with gold and lined with scarlet; blue satin hat; maroon silk tights; blue velvet belt and purse; black velvet boots trimmed with blue satin and gold.

LITTLE JOHN. See JOHN.

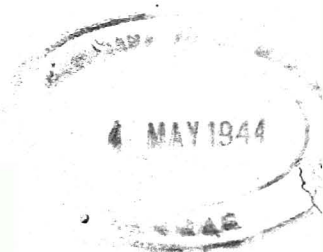
LOHENGRIN. Silver armour; long blue velvet cloak from shoulders. Silver helmet; red velvet swordbelt; sword and horn at side; shield with swan.

LORD OF THE ISLES. See SCOTCH.

LORENZO THE MAGNIFICENT. Old Florentine



Leicester.



costume. Short jacket of velvet brocade, embroidered with armorial devices; the Florentine cap (*mazziochio*) in brown velvet; silk tights; orders round neck.

LOUIS DE LA TREMOUILLE (Dress worn by the Earl of Craven at Queen's Fancy Ball). A demi-suit of engraved and gilt Italian armour of 16th century over a full-skirted doublet of black velvet, embroidered with arms and motto; violet hose; long pointed black velvet boots coming to ankle, embroidered with the lion; a violet velvet bonnet, with a plume of white ostrich feathers, and diamond loop.

LOUIS XI. A long loose robe of black brocade, or of peacock blue cut velvet, coming from the throat, opening in front, and trimmed in a heart-shape with fur, sable on black, white on the peacock. To the back is attached a flowing cloak, the ends thrown over the arm in front; broad cap, with the effigies of saints upon it; sleeves tight to wrist; charms hung about the neck; a book in hand; long stockings, and pointed velvet shoes embroidered; hair cut square.

LOUIS XII. (Costume of the period, as worn by Capt. the Hon. Fred. Villiers at the Queen's Ball). Short habit of light blue velvet, with open hanging sleeves, faced, collared, and trimmed with ermine, over a doublet of cerise velvet, trimmed with silk, and richly embroidered tight under-sleeves to wrist; white hose; blue shoes, pointed and slashed with white satin, a strap across the instep; a cerise velvet belt at waist, with an *aumônier* bag of cerise velvet attached; cerise cap with a brim cut in points; slung behind him a large round velvet hat, turned up with ermine and ornamented with a falling plume of long ostrich feathers, white, blue, and cerise.

LOUIS XIII. (*temp.* 1610-1643). Much the same as that of Elizabeth's reign. White satin habit and breeches; crimson velvet cloak, trimmed with gold lace; drab hat with white feather, worn over wig; blue and gold, ruby and amber, and grey and amber, also suitable. **Cavalier of the Period.** Crimson velvet cloak, slashed with white and embroidered in gold; white silk facings; vest of white satin; embroidered breeches of crimson; orange morocco boots. **Page Louis XIII.'s Time.** Black velvet knee-breeches, with bouillons of white satin at each side, and at the knees, trimmed with white lace; pyramid loop bows at waist; full,

white skirt; short black velvet jacket; large collar; shoulder cloak; felt hat and feather. See Fig. 17.

LOUIS XIV. PERIOD (1643-1679). The men wore periwigs and no beards, silk stockings, breeches, very long waistcoats and coats, all-round lace cravats, lace ties, and cocked hats or plumed hats. The costume carried out in satin and velvet, richly embroidered. Louis XIV. wears a long flowing wig with curls; very pointed shoes, with large bows on the instep; full trunks above the knee; long-skirted habit, the full skirt showing in front, the sleeves puffed and laced; a laced necktie and plumed hat; sword-belt, white skirt, showing in front knots of ribbon at knees. Or, hat with overlapping feathers, blue ribbon with diamond star across breast; black velvet coat, and waistcoat of red satin, richly wrought in gold; diamonds on shoes and garters. The monarch changed his wigs often, and had them to suit all occasions, so they are an important part of costume; the boots have loose tops edged with lace. Or, scarlet velvet short jacket, and sleeves edged with gold; white under-sleeves, and lace cuffs; white shirt, and lace cravat; blue silk sash, edged with gold; blue figured satin cloak, lined with white satin; gold-embroidered skirt, edged round waist with scarlet; scarlet garters; sword-knot, and bows on shoes; white silk stockings. A **Bridegroom of the Bourgeois Class** appears in blue coat with white facings, *batiste* under-sleeves, with lace cuffs and paste buttons; white satin waistcoat with similar buttons; short blue breeches; silk stockings; black, high-heeled shoes; lace cravat; hair *en queue*.

LOUIS XV. PERIOD, 1715-1774. Marquis. Pointed shoes and buckles; breeches, vest, and coat of satin or velvet, richly embroidered; sword at side; full under-sleeve of lace and ruffles; muslin lace-edged necktie; lace frill in front of coat; cocked hat; buckles on shoes. **Gentleman of the Period.** Suit of pale blue satin, with gold lace trimmings; velvet cocked hat bordered with feathers; white satin coat *à la Française*, with Louis-blue velvet trimmings, and gilt buttons; white silk waistcoat; white lace ruche, with large jabot and cuffs; sword; powdered hair, tied with velvet bow; silk stockings, with embroidered blue clocks; white satin shoes, with Louis XV. heels. Or, knee-breeches; square coat of silk or velvet; flowered waistcoat, lining white silk; white silk stockings; gold embroidered clocks; coat bordered with gold braid; black shoes and buckles; hair powdered, and tied with black ribbon;



Crusader.





13. Cook



14. Débardeur.



15. Incrovable



16. Iester.



17. Page of Louis XIII.



18. Monk.



19. Mirleton.



20. Neapolitan Fisherman.

white muslin cravat, trimmed with lace. For the dress of a **Bourgeois** there should be no sword; and the coat and breeches of cloth. In flowered chintz this style of dress looks well to personate a China figure. See HUNTER, of Louis XV.'s time.

LOUIS XVI. PERIOD, 1774-1789. King. Lilac coat embroidered with gold; short breeches; silk stockings; high-heeled shoes; blue and red ribbon of the Order of St. Louis across the white satin waistcoat; a lace collar and frill partly covered by loose cravat; hair powdered, curled, and tied with ribbon at the back of the neck. Marquis. Blue velvet coat and breeches embroidered in gold; lace sleeves and cravat; white satin vest embroidered in gold; three-cornered hat edged with gold lace, having white plume; shoes with diamond buckles; sword. Nobleman of the Period. Coat of claret-coloured velvet trimmed with gold lace; vest of white satin with long jabot at neck; ruffles of point lace and full ruffles of the same on the sleeves; knee-breeches of claret velvet tied with satin ribbons; white silk stockings and shoes, with paste buckles. The powdered wig is tied with a bow of wide claret satin ribbon, and a sword and cocked hat trimmed with gold lace. See JOSEPH BALSAMO.

LUCIFER (*Star of the Morning*). Velvet tight-fitting doublet and trunks; black silk stockings; black velvet shoes with pointed toes; large black tarletan wings made on frames; and a silver star on the forehead.

LUNA, COMTE DE (*Il Trovatore*). Habit of violet velvet, bordered with gold trimming and ermine, the shield of arms embroidered on the breast; sword-belt jewelled, and sword; red silk tights; velvet-pointed boots; flowing sleeves, tight ones beneath; white flowing cloak; round cap, with white scarf attached to side.

LUTE PLAYER. Velvet habit; sleeves of satin, puffed, the puffs divided by gold cord; shoulder cloak; trunk hose of puffed velvet and satin; tights; black shoes, with large ribbon bows; velvet cap; lute in hand.

MACAIRE, ROBERT. Coat, tight trousers, lace frill, ragged shirt and gloves; tattered handkerchief peeping from torn pocket; battered white hat. A mass of shreds and patches of all sizes and colours, but a would-be dandy, nevertheless.

MACBETH. Plaid jacket, kilt, and tartan trimmed with gold fringe and brass buttons ; flesh-coloured bodice and tights ; russet sandals. Second dress : purple velvet robe over white satin, embroidered and trimmed with ermine. Last dress : armour.

MACARONI, 1770. Hair in top-knot ; long side curls ; curls at back ; small cocked hat, with button loop, and gold tassel in coil, at side ; coat, waistcoat, and short breeches, very tight-fitting, of striped silk ; bunch of ribbons at knee ; cane used to tip hat forward ; two watches, one at each side ; large white necktie ; white stockings ; shoes, with buckles.

MACHEATH, CAPTAIN (*Beggar's Opera*). Scarlet cloth coat, laced with gold, slashed with white satin ; white vest ; white kerseymere breeches ; black or yellow leather boots ; belt ; three-cornered hat and plumes ; and curled wig.

MALAY (Cape Town). Pagoda-shaped hat of palmetto straw ; yellow flannel coat ; blue velvet waistcoat, with gold buttons, richly embroidered sora over yellow silk ; trousers with gold and silver trimmings.

MALTA, KNIGHTS OF. *See* KNIGHT.

MAN, A LITTLE, WHO HAD A LITTLE GUN (*Nursery Rhymes*). Bright green suit made like a game-keeper's dress ; a gun and duck attached.

MAN ALL TATTERED AND TORN (*House that Jack Built*). Boots, gaiters, breeches, tail-coat, brass buttons ; old-fashioned waistcoat all in tatters.

MANDARIN. *See* CHINESE.

MAN OF LETTERS. Short breeches and grey silk stockings ; velvet coat ; high-heeled shoes ; lace cravat ; tricorn hat.

MAN-OF-WAR'S-MAN in sailor dress. *See* SAILOR

MANRICO (*Il Trovatore*). Loose velvet habit, bordered with fur and gold braid ; long pendant sleeves, tight ones beneath, with gauntlet, sword, and sword-belt ; silk tights ; boots.

MARLBOROUGH, DUKE OF. This costume is conspicuous for a full wig ; large lace neckcloth ; hanging cuffs and ruffles ; square-cut coat and long-flapped waistcoat ; sash

over the right shoulder ; blue or scarlet silk stockings, with gold or silver clocks, drawn high up over the knee ; square-toed shoes, with high heels and small buckles. *See* Fig. 2, p. 6. Queen Anne Period.

MARLBOROUGH, OFFICER OF DUKE OF. Pale blue military coat, skirts buttoned back ; long pale pink waistcoat, trimmed with gold braid ; long white gaiters ; three-cornered plush hat ; military appendages.

MARS. Flesh tights ; red full skirt, trimmed with gold fringe ; gold scaled tight-fitting habit ; martial cloak of red, from one shoulder ; brass helmet, with red coxcomb tuft.

MASANIELLO. *See* ITALIAN. Italian Fisherman. Wears a red fisherman's cap, with tassel to fall over left ear ; a shirt of holland or striped calico ; the collar turned down ; the sleeves rolled up to the elbow ; red necktie ; coloured sash round waist ; trousers to match ; shirt also rolled up above knee ; tights ; shoes with buckles ; a brown cloth cloak or jacket, with silver Maltese buttons, slung to shoulders. Another rendering, as Mario dressed the character :—Cowl of scarlet silk, trimmed with gold lace ; jacket, purple cashmere, trimmed with blue and orange ribbon, and lined with striped silk ; blue silk shirt striped with white ; scarlet sash ; white and blue silk trunks, trimmed with white ribbon ; blue and white striped stockings. Charms should be worn round neck, and earrings. A net may be carried ; low black shoes or sandals.

MASTER OF RAVENSWOOD. Coat, vest, and full trousers of black velvet, slashed with purple satin, trimmed with beaded gimp ; jack-boots and spurs ; black hat and plume, lace tie. The colouring may be varied, but should be somewhat sombre.

MATADOR. *See* SPANISH. Violet jacket and breeches, trimmed with bright coloured satin, embroidered and laced with silver or gold and Maltese buttons ; satin bows, and vest embroidered in silver ; silk stockings ; satin scarf ; cap ; silk shoulder-knots and epaulettes, and rosettes ; black shoes ; crimson cloak ; white shirt, the vest being open. This is a very handsome costume, one of the most effective in a room. Favourite colours, black and blue ; ruby and white, or ruby and blue ; puce and white ; black and green, maroon and amber.

MAUPRAT, ADRIENNE DE. Rich wedding garb as worn in the second act of *Richelieu*. White silk jacket, trimmed with light blue and silver ; full trunks to match ; white silk tights ; blue velvet cloak, trimmed with silver.

MEPHISTOPHILES (*Faust*). Silk tights ; full short breeches round hips ; tight-fitting habit ; short cloak attached to shoulders ; a cap with two upstanding feathers like horns. This is generally carried out entirely in red velvet, or in scarlet satin and black velvet. **For a Boy.** *Juste-au-corps* and breeches of flame-coloured plush ; silk stockings of a lighter shade of red ; dark red velvet mantle, lined with pale red ; flame red toque ; white aigrette ; cambric collar, cut in points ; gilt shoes, with forked toes.

MERCHANT OF VENICE. **Shylock.** Black velvet trunks, and cloak trimmed with dark blue ribbon and bugles ; black silk tights ; black shoes ; hat and feather ; long beard ; black habit. *See also* BASSANIO.

MERCURY. Dress of white, blue, and silver, consisting of close-fitting habit, with full skirt ; short sleeves, the whole bordered with silver fringe ; a white gauze cap, with wings ; silk tights, and sandals with small wings at the heel ; caduceus in hand.

MERLIN. Full flowing robes of soft silk or wool, bordered with gold ; long beard ; skull cap of silk, bordered with gold.

MEXICAN. Green silk trousers, trimmed with gold, a gusset of red let in at the ankle on the outside of the leg ; loose black cloth jacket, trimmed with gold ; a sash of many colours round the waist ; a shawl thrown about the shoulders ; large hat of straw, with bunch of flowers at the side. Sometimes the light trousers, cut open at the knee, are decorated with gold buttons, and have a plaiting of fine linen, supplemented by an embroidered jacket, with bows on the shoulders ; scarlet silk sash ; turned-down collar ; blue silk cravat ; straw hat, feather at the side. It may also be made in nankeen. Mexican costumes are very picturesque.

MEXICAN BRIGAND. Red coat, with gold facings ; blue trousers, embroidered with gold ; white vest ; yellow sash ; broad-brimmed hat, with feathers

MEXICAN CABALLERO. Scarlet coat, embroidered with gold ; white satin vest ; blue velvet knickerbockers, with lace ruffle ; yellow scarf ; white silk stockings ; black shoes ; large hat, with blue feathers, always richly embroidered and bright in hue. These broad-brimmed hats, or sombreros, are made of llama fur, dyed colour required. The trousers are a mixture of cotton and wool, embroidered with silk and spangles, the trimming being carried in a stripe down the outside of the leg ; the jacket is short, edged with the same ; a knotted scarf round the waist.

MEXICAN HUNTER. Buff leather dress, embroidered with black ; seams of trousers with silver buttons ; large hat.

MEXICAN OFFICER. Jacket of maroon velvet ; blue velvet trousers, slashed with blue satin, and trimmed with gold ; Panama hat, trimmed with blue satin ; white satin vest green silk sash, fringed with gold.

MEXICAN PLANTER. Brown cloth jacket ; crimson vest, with gold ; brown cloth trousers ; long Mexican scarf from shoulder ; crimson sash ; jewelled dagger ; slouch hat.

MEXICAN POSTILLION. Broad sombrero hat ; dark green jacket, seams and pockets trimmed with silver ; trousers to match, slashed up the side, laced with gold cord ; top boots ; whip in hand.

MIGNON OF THE COURT OF HENRY III. A capital dress, and easily made for a young boy. Black shoes ; white stockings ; full yellow and white striped breeches to the knee ; a blouse of same, confined at the waist by a belt ; long full sleeves to wrist ; a shoulder-cloak, and round cap made of the same ; a close muslin ruff at the throat.

MILANESE NOBLE OF THE 15th CENTURY. Velvet hat, with soft crown, turn-down brim ; ample black cloak ; ruff at throat ; skirted habit of rich brocade, buttons down front ; sword and sword-belt ; full breeches to knee of same, with rosettes at knee ; silk stockings ; embroidered shoes.

MIRLITON. Shoes and trousers in one ; loose semi-fitting blouse, with long sleeves ; pointed cap ; all in blue and white striped material. This can be made prettily and easily for a boy in white linen, with narrow bands of ribbon or blue paper pasted on it ; the pointed cap can be made in stiff paper and covered ; a mirliton should be carried in the hand. See Fig. 19, p. 38.

MISRULE, LORD OF. High wide-topped cavalier boots; full trunks; long close-fitting habit of Elizabethan era, scarf round waist, sleeves tight to wrist, with puffs on the shoulder; a ruff at the throat; a fool's cap and bauble.

MONK. Long brown ample robe, with wide sleeves and a cord round the waist. The Franciscans have a small cape and hood; the Capuchin's cape is as large as that of an Inverness wrapper. Rosary at side. *See* small Illustrations, Plate V., Fig. 18. **Monk of Middle Ages.** White robe with red cross on breast, brown girdle round the waist, large pagoda sleeves; flowing brown mantle with cowl; bare feet, with leather coloured sandals. **A Celestine Monk**, from an illuminated MS. in the Royal Collection at the British Museum; the costume worn by Captain Francis Seymour, Groom of the Bedchamber to H.R.H. Prince Albert, at the Queen's Fancy Ball at Buckingham Palace, May 12, 1842. Full jacket or doublet of red and yellow striped satin, with large wing sleeves, such as were worn at the close of 14th century; tight undersleeves beneath; sword, and blue and gold sword-belt; long hose, one red and one white, with chains at knees, to which the long pointed toes were sometimes hooked.

MONMOUTH. Silk stockings; long loose trousers edged with silver; white silk coat and waistcoat; cavalier hat and feather; blue ribbon across the breast.

MONTEZUMA, EMPEROR OF MEXICO. Trousers of French grey satin with gold braidings; pale green vest, richly embroidered with gold and precious stones; grey satin jacket, slashed with green and trimmed with gold; sash of many colours round waist; lace ruffles; white bandana hat, with aigrette and feathers.

MONTROSE, DUKE OF. Scarlet rocket-coat, trimmed with silver and lined with crimson, reaching to the knee; under this a black, richly-embroidered waistcoat and breeches; red coloured silk stockings; roses on the shoes; large beaver hat with ribbons; point lace ruffles; white gloves, and long cloak embroidered in gold and silver. For style, *see* large Illustration of WILLIAM III., No. 8.

MOUNTAINEER. Jacket and waistcoat of black velvet, trimmed with scarlet silk and yellow braid; blue serge knickerbockers trimmed with scarlet braid; felt hat with pointed crown; staff in hand.

MULETEER (SPANISH). Black cloth coat; waist-coat and breeches embroidered with red and blue silk; Spanish scarf over shoulders; waist scarf of bright colouring; leather gaiters; Spanish hat.

MURCIAN. Loose embroidered jacket over embroidered vest; short white petticoat; red sash round waist; scarf over shoulder; stick in hand; full trousers to knee; bare legs; boots and linen anklets; soft, pointed cap.

MUSCADIN (Directoire Period). Low-crowned beaver hat; tail-coat with lappels, buttoned in front; large muslin tie; waistcoat and watch-chain, visible below coat; frills at wrist; cane in hand; breeches to knee, with ribbons; boots and gaiters, striped stockings visible above.

MUSKETEER (Charles I.'s reign). Red military coat, gold facings and trimmings; black velvet breeches, slashed with red and trimmed with gold lace; hat, plume, sword, and wig.

MUSKETEER. See LOUIS XIV.'s TIME.

MUSSULMAN (for a young child). White knickerbockers trimmed with violet ribbon; white cashmere dress, cut in tabs, and bound with wide gold braid; white chemisette with Ottoman star in gold; short round violet vest, bordered with gold braid; wide sleeves, lined with white silk, having pompons at the top; red leather boots; violet scarf round waist, with yataghan; striped turban.

MUTILATED SPORTSMAN. Wears an old shooting-shirt, and has a wooden leg, and an arm tied up, as though broken.

MUZIO. Black velvet jacket, trimmed with green and gold; green satin vest and breeches; silk sash; hat trimmed with coloured ribbons.

NABOB, THE (as depicted on the Nabob pickles advertisement). Orange blouse, trimmed with scarlet and black, crescents and stars in satin on back; blue pantaloons and turban; pickle-bottle and fish in hand.

NAPALESCO. Blue cloth tunic, trimmed with silver braid and bell buttons; blue vest to match, with silver stripes; fez head-dress; scarlet silk sash. Or, brown stockings laced across with coloured ribbon; short blue cloth breeches, buckled at the side of the knee; leather waistcoat, with steel and leather

buttons about it, cut low and straight at neck to show the white shirt and collar; brown cloth jacket, trimmed with blue braid; brown felt hat, conical crown, red ribbon round it.

NAPOLEON I. Cocked hat, with tricolour; large lapelled coat; white leather breeches, silk stockings, and shoes; watch at fob.

NAWAB OF MOORSHEDABAD. Full gold-striped trousers and gold slippers; under-tunic of fine white muslin; over it one of dark shawl material, lined with red velvet; red shawl round waist; turban made of a fine soft shawl; row of large pearls and emeralds round throat.

NEAPOLITAN FISHERMAN. *See ITALIAN* and *MASANIELLO*. Small Illustration, Plate V., Fig. 20.

NELSON, LORD. Bag-wig; blue naval coat, brass buttons and epaulettes; white breeches; silk stockings; black shoes.

NEPAULESE CHIEF. Robe of blue satin, embroidered in gold and coloured silk; under-robe of white muslin trimmed with gold; pajamas of the same; scarlet and gold sash; red velvet cap; embroidered slippers; silk stockings; sword.

NIGGER. Black silk stockings; red and gold petticoat and bodice, short sleeves; black gloves; black mask; round gold rings at nose and ears. *See also ETHIOPIAN SERENADER.*

NIGHT AND MORNING COSTUME. Half-black, half-white satin tights; *juste-au-corps*, and round hat; the face half-black, the hair powdered on one side; one glove black, one white; the same with shoes.

NINETEENTH CENTURY, FANCY COSTUME OF. Red hunting coat; white satin vest and knee-breeches; black silk stockings; black shoes; steel buckles.

NOBLE, 1664. White serge doublet, trimmed with satin and gold embroidery; purple velvet cloak, lined with amber satin, trimmed with gold lace; dark purple trunks with gold lace; point lace collar; flaxen wig, with ringlets; hat and feather.

NOBLEMAN IN CAMBRIDGE ACADEMICALS, 1780. Purple silk gown, deeply braided with gold lace; cherry and white band; flat velvet cap, with gold tassels; knee-breeches; shoes, buckles, and powder.

NOCTURNE, IN WHITE AND BLACK (*a long way after Whistler*). Evening dress of white cloth, with brass buttons; black linen tie; gloves and handkerchief; white pumps; white opera hat. Also called Evening Dress of the Future.

NORTHUMBERLAND, DUKE OF (JOHN DUDLEY, 1552). Doublet of white satin, with front piece of purple cloth powdered with diamonds, edged with ermine; mantle of silver cloth lined with blue velvet, fastened with jewelled clasp bearing his cipher in pearls and precious stones. Order of Garter.

NORWEGIAN PEASANT, THE. High leather boots; grey breeches; long coat; large blue waistcoat, embroidered with flowers; round fur cap. The costume is often rendered at fancy balls as follows:—Blue merino jacket, with rows of red braid round and across front; brown striped trousers to knee; white stockings; brown shoes; flat skull red cap. Or, white coat trimmed with gold braid and pouch; red cuffs; red vest, visible above buttoned coat; white lace tie.

NURSERY RHYMES. The characters from these are the fashion for children's fancy dresses, and for the Singing Quadrilles; the principal characters are **Jack**, in *Jack and Jill*, **Jack Horner** (*see J*), **KING**, in *Sing a Song of Sixpence* (*see KING*), **A Little Man who had a Little Gun**, **Man all Tattered and Torn** (*see M*), **Boy Blue**, **Babes in the Wood**, **Blue Beard**, and **Beauty and the Beast** (*see B*).

OBADIAHS, THE TWO. Two people dressed as Christy Minstrels; with large shirt-collars; red and white, long, swallow-tailed coats; trousers and waistcoats; white ruffles and ties, &c. *See* CHRISTY MINSTRELS.

OBERON. Short, loose dress of soft, white calico, confined at waist by a band, and cut square at throat, horn attached; brown cotton cloak at the shoulders; round cap and crown above.

OLDEN TIME, GENTLEMAN OF. Silk stockings; shoes with buckles; knee breeches; very long coat and flowered waistcoat, with flap pockets; steel buttons and ruffles; a frill to shirt. Bald head or white hair; a stick in the hand.

OSIP (*Les Danicheff*). Russian costume. See **RUSSIAN DRESS**, and Fig. 26, p. 54. Sleeveless casaque of black velvet; red cloth waistcoat; black, puffed trousers, tucked into high boots of black leather.

OLIVER CROMWELL. See **CROMWELL**.

OTHELLO. Maroon velvet, gold-embroidered doublet, and trunks; silk hose, and long boots.

OSBALDISTON, FRANK. Black velvet coat and knee-breeches; white satin vest; lace ruffles; black silk stockings. See large Illustration, **GEORGE II.'s TIME**, No. 4.

OSTUNIAN FISHERMAN. See **ITALIAN**.

PADDY. Grey stockings; black shoes; tight corduroy breeches; green coat, brass buttons; high white hat with very little brim; shillelagh in hand.

PAGE (*Temp.* Charles VI.). Silver grey doublet; trunk hose; the latter barred with black velvet; pouch at side; belt; silver grey hose; black velvet shoes, square toes; and cap. See Fig. 21. **Page** (*The Betrothed*). Tights; long-skirted habit, sleeves with double puffs, slashed from elbow; wide lace collar. (*Temp.* Charles I.). Velvet coat and breeches, with ribbon rosettes; silk stockings; shoes with bows; Vandyke collar and cuffs; satin-lined coat; large hat and feather, all to be of the one tone. (*Temp.* Elizabeth). Silk stockings; trunks; satin habit, and shoulder-cloak, elaborately braided; ruff and low-crowned hat. **Page** (Mediæval). Doublet of green velvet embroidered; large collar; lace ruffles; leather waist-belt; gilt-hilted sword; grey tights; black velvet hat and plume. **Urbano** (page in *Huguenots*). High boots; full trunks; red satin breeches; velvet tunic, bordered with gold, puffed sleeves, pendant ones over; hat with feathers. Another good page's dress is:—Striped silk tights; orange, white, and yellow satin waistcoat; black satin vest; Henry II. upstanding collar; jockey epaulettes to slashed sleeves; scarf round waist; black velvet *toque*, heron's plume. See also **LOUIS XIV.**, p. 38; **LOUIS XIII.**, p. 37; and Fig. 17, p. 38.

PANTALOON. Old man with stick; face painted white; white wig; red shoes; white stockings, with red up the front; red velvet jacket, with epaulettes, over a vest; waist-belt; below this a sort of short skirt formed of points.



21. Page.



22. Po'e.



23 Postillion.



24. Robin Hood.

4 MAY 1944

PANGLOSS, DR. Velvet Georgian suit; long waistcoat; coat with large cuffs; lace ruffles; breeches; silk stockings, and shoes; huge white wig; spectacles. For make of coat, *see* Illustration of George II. period, Plate IV., p. 27.

PARISH BEADLE. Long many-caped cloak, cocked hat; gold-headed cane in hand.

PASTRYCOOK. *See* Cook.

PAUL (in *Paul and Virginia*). Sandals; tights; striped trousers rolled above the knee; red sash; white shirt; striped waistcoat; palm-leaf in hand.

PAUL PRY. High boots; trousers of red and white-striped calico or nankeen, tucked into them; waistcoat to match, with large watch and chain; powdered bag-wig; blue tailed coat and brass buttons; umbrella under arm.

PAY (FULL AND HALF). A gentleman's evening suit on one side, a suit of frieze on the other.

PEACE AND WAR. One side frock-coat and black trousers, the other a military uniform, with regulation stripes down the leg.

PEPPE NAPPA. *See* CLOWNS.

PERSIAN MEN wear flowing skirts, full trousers, and sandalled shoes; the upper part of the dress fitting closely like a Jersey, cut low round the throat; the head-dress a caftan, stiff and square at the top, not unlike a sugar-bag. Sometimes they have an over-robe like a dressing-gown, bordered with fur, opening, but not fastening, in front, and always a scarf round the hips. The Persian of our day has a close-buttoned, black cloth frock-coat, the skirts gathered at the waist. Persians in art and poetry wear a kind of turban, from which rises a pointed cap. A Persian Nobleman at a fancy ball is a blaze of green and gold. His dress is:—Pointed shoes; skirt to ankle, over dress bordered with fur, the sleeves falling a little over the hand; jewelled turban.

PETRUCHIO (*Taming of the Shrew*). Velvet suit; full trousers to knee; habit with belt round waist, puffed sleeves; lace collar; ribbon rosettes; silk stockings, and shoes.

PEVERIL OF THE PEAK. Stockings to hips; full breeches above knee; velvet habit buttoning down the front;

cloak fastened to shoulder; large collar, edged with lace; puffed sleeves from shoulder.

PHILIP II. OF SPAIN. Velvet jacket, trunks, and cloak, slashed with satin, faced with some bright colour, and trimmed with ribbons and gold lace; embroidered white silk hose; point-lace ruffles and collar; hat and plumes; shoes with rosettes.

PHRENOLOGICAL BUST. Draped in white, with skull wig, drawn out as a map according to bumps, &c.

PICADOR, SPANISH. Jacket; knee-breeches of black velvet, faced with blue satin, trimmed with silver lace; satin vest; sash round waist. *See SPANISH.*

PICNIC. Grass-green stockings and shoes; white tablecloth, worn as Mexican poncho, on it drawings of pigeons, lobster salads, orange jelly, &c., looped up where necessary with knife and fork in tin.

PIEMAN. In white suit and apron; cook's white cap. *See COOK.*

PIERROT. *See CLOWNS.*

PIFFARARE. They are generally seen in couples, playing on the campagna, on bagpipes, and the piffero, or pastoral pipe; conical felt hat, with frayed peacock's feathers, or faded red cord and tassels; red waistcoats; blue jackets; leather small-clothes; sandals, bound with ribbons, interlacing the leg to knee; long brown or blue, or sometimes red cloak, with cape, buckled round neck; dishevelled hair, sunburnt faces. *See ITALIAN.*

PILGRIM. Long brown habit, reaching to the feet; a cord round the waist, sleeves to wrist; cape and hood, cockle-shells on cape and on broad-brimmed, low-crowned hat; staff surmounted with cross; sandalled shoon.

PIRATE. Blue velvet tunic, slashed with white satin and trimmed with silver braid; white satin collar; silk shirt of blue and white stripes; full trousers; smuggler's boots; sash round waist; striped sailor's cap on head.

PIRATES OF PENZANCE. Frederick: in undress uniform; Pirate King: cocked hat; coat with epaulettes;



Painted by Joannes Corons. From the National Portrait Gallery. Photographed by Walker & Cockerell, Clifford's Inn,

Henry Grey, Duke of Suffolk, K.G., died 1554.—Doublet and trunk hose of rich cream colour the horizontal stripes on the habit, and the perpendicular ones on the trunk hose are divided by rich gold galon. The coat and cap of black velvet display jewels in gold settings; a white feather in cap. Lace edged neck ruff, ruffles at the wrist. The sword belt is jewelled; silk tights, buckled shoes, Collar and Order of the Garter.

petticoat and loose under-bodice ; belt with pistols ; stockings and shoes ; banner with death's head and cross-bones. **Samuel** : similar dress, only a sailor's cap instead of cocked hat ; sailor's collar ; no epaulettes.

PISTOL (*Merry Wives of Windsor*). Red jerkin and breeches ; hanging sleeves ; drab tights ; high boots ; tall hat, large brim ; broad, leather waist-belt ; pouch and long sword.

PLANTER. See MEXICAN.

POLE. High black boots, full red trousers tucked into them ; long pelisse of dark blue cloth, bordered with fur ; a belt round the waist ; cape from shoulders. See Fig. 22, p. 48.

POLICHINELLO. Loose white jacket and pantaloons ; beaked mask, covering upper part of whitened face. He is the Neapolitan species of clown, who is represented as intriguing, married, and quarrelling with his mother-in-law.

POLISH COUNT. Velvet tunic faced with cerise silk ; buff waist-belt ; cerise knickerbockers ; long boots ; fur cap ; pistols at the girdle.

POLIXENES, KING OF BOHEMIA (*Winter's Tale*). Tunic of red damask silk, trimmed with gold braid and spangles. Classical drapery, of soft falling woollen stuff ; helmet.

POMANDER, SIR CHARLES (*Masks and Faces*). First wears travelling dress :—Frock-coat of red velvet, with gold breeches and boots ; powdered hair. Secondly :—Light blue and silver dress ; coat ; waistcoat ; breeches ; stockings ; black shoes.

POMPONNET (*Fille du Madame Angot*). Costume of *Directoire*, all white. Sash at waist ; shirt with high collar ; jacket, with lappels and huge pearl buttons ; broad-brimmed felt hat.

PORTUGUESE PEASANT. Short white gathered skirt over short trousers ; a frilled shirt, full sleeves to wrist ; sleeveless velvet waistcoat, with gold buttons ; red cap ; sandalled shoes. Or, tights ; pointed shoes ; white leather breeches, with blue facings ; short jacket and waistcoat ; braided blue scarf round the waist ; a many-coloured one round head.

POSTBOY. Top boots; white leather breeches; red jacket, with pink sleeves; jockey-cap; whip in hand; any mixture of colours admissible.

POSTILLON DE LONG-JUMEAU. Coat with postillion basque, crimson satin revers and cuffs trimmed with gold braid, studded with gold buttons; on the left side a rose, and streamers of blue and white ribbon; red armlets bound with gold, fastened with a buckle; lace cuffs and *jabot*; white silk waistcoat; belt; turn-down linen collar and black tie; white hose; blue velvet breeches; high-heeled shoes, silver buckles; powdered hair and bag-wig; large earrings; low crowned hat, with gold band; rose and streamers. *See* Fig. 23, p. 48.

POSTILLION, FRENCH. Kerseymere breeches; green jacket; bells; high postillion hat, with tri-coloured ribbons; jack boots; pigtail, powdered hair. For MEXICAN POSTILLION, *see* MEXICAN.

PRIMROSE FAMILY. *See* WAKEFIELD.

PRINCE IN FAIRY TALE. Velvet doublet; tights; velvet pointed shoes; fur-trimmed cap.

PRINCES IN TOWER (after Millais' picture). Black velvet close-fitting Tudor dresses, with gold chains round neck; tights.

PROSPERO. Long black velvet robe, sleeves barred with gold; large collar, facings of scarlet and black with hieroglyphic signs; skull cap similarly bordered; flowing grey wig; beard and moustache; red stockings; pointed shoes.

PUSS IN BOOTS. Cat's head and body, in top boots and groom's coat, with leather belt.

PYRENEAN GUIDE. Scarlet jacket; white vest; blue and white sash; black velvet breeches; white stockings; black shoes.

QUACK. Flowing robe of cloth or velvet, tied in at waist with a girdle; large lace *jabot* at throat; hanging sleeves; pointed cap with asthma, fever, and various diseases inscribed round it. A large bottle carried in hand.

QUENTIN DURWARD. In armour, or in a green satin habit and trunks; long stockings; flat green satin cap.



Period of Edward III.

4 MAY 1944

RALEIGH, SIR WALTER. Jacket, vest, breeches, and cloak of velvet, puffed with satin; silk hose; velvet shoes; hat and plume; sword. It may be carried out in violet satin and black velvet; red satin and black velvet; blue velvet and white satin; violet velvet and white satin; violet velvet and amber satin; ruby velvet and peach satin. This costume is made after the Elizabethan Period, illustrated in **LEICESTER**. See Plate VI., p. 36.

RAOUL (in *Huguenots*). Doublet of velvet, slashed with satin, embroidered with gold; trunk hose to match; small black velvet cloak bordered with gold lace and embroidery; cap and feather to match; jewelled sword, dagger, and ornaments; deep linen collar; square-toed shoes. Black and violet the usual colouring.

REMBRANDT. Full velvet robe, gathered at waist, full sleeves to wrist, with ruffles; lace collar; sword and belt; black velvet cap and plume; gold chain round neck; hair in curls.

REVEILLÉ, LE MONSIEUR. Evening dress, with cotton nightcap.

REYNOLDS, SIR JOSHUA. There are many costumes, peculiarly well suited to boys, which this celebrated artist has made famous by his portraits. For example, in "Feeding the Chickens," black shoes with black bows; red stockings; blue petticoat, with blue band; white high pinafore, with red sash, made with a wide falling collar, bordered with a frill; sleeves to elbow; a red bow at throat. In "Doubtful Security," the child wears shoes with straps; also a yellow and blue skirt; low white pinafore, with pink sash. **The Affectionate Brothers.** The eldest boy with coat, waistcoat, and breeches of maroon-coloured or black velvet; the little boy with jacket and trousers combined, and made of light-coloured cloth; and the baby all in white, with a gaily trimmed Gainsborough hat in miniature, and a cherry-coloured sash round its tiny waist.

RICHARD I., CŒUR DE LION (as a Crusader, see C). In a maroon velvet tunic trimmed with gold lace, three lions courant, embroidered in gold, on the breast; white silk tights; velvet trunks; gold and satin shoes; jewelled belt; sword and dagger. Or velvet *juste-au-corps*; long flowing cloak; steel helmet. See Plate I., p. 20.

RICHELIEU. Close-fitting black robe ; purple biretta.

RICHMOND, DUKE OF. Doublet of cloth of gold, wrought with gold embroidery ; crimson velvet girdle ; jewelled poignard and Toledo sword ; loose cloak of scarlet velvet, trimmed with minever ; Collar of the Order of Garter ; white velvet cap, with an aigrette and emeralds.

RIENZI (*Last of the Tribunes*). Long full white robe, rounded at neck, invisible coat of mail beneath ; girdle round waist ; gold embroidery down front of robe and round robe ; full mantle, reaching to ground, of dark blue velvet with gold brocade all over it ; hair curled ; full suit of armour also correct.

RIGOLETTO. A parti-coloured dress and cloak ; blue and amber, pink and white, or blue and gold, made after the order of a jester's costume. See **JESTER, FOOL, FUN**, and Fig. 16, p. 21.

RISING SUN. As a schoolboy, with large linen collar bordered with a frill ; shell jacket with many buttons ; trousers buttoned over.

RIZZIO. Black velvet trunks ; habit and shoulder-cloak slashed with violet satin ; lace collar ; sword ; plumed cap, &c. Elizabethan Period. See **LEICESTER**, Plate VI., p. 36.

ROBESPIERRE. Cloth coat, ruby colour, with lace frills and ruffles ; white cloth knee-breeches ; long patent leather top-boots ; tri-coloured sash round the waist ; sword at side.

ROBIN HOOD. Untanned leather boots, the tops turning over ; brown tights ; long surcoat of Lincoln-green cloth, bordered with fur, headed with gold braid, gathered at the waist, low at neck, buttoned in front ; red velvet vest ; a belt at waist, with leather pouch and horn ; gauntlet gloves ; velvet cap and plume ; a bow in hand. See Fig. 24, p. 48.

ROBINSON CRUSOE. Knickerbockers and long coat of fur, with robins sewn about it ; belt round the waist ; silk tights ; fur trousers ; sandals ; green parrot on shoulder ; fowling-piece, pistols, hatchet, and umbrella. See Fig. 25. He is accompanied often by his **Man Friday**, in striped trousers and shirt ; black face, feet, and hands.



25. Robinson Crusoe.



26. Russian.



27. Spanish Toreador.



28. Charles Surface

ROCHESTER, EARL OF (*temp.* Charles II.). Blue velvet jacket, embroidered in gold, slashed with red; red cloak, with white satin and gold; point lace collar and cravat; buff lace-edged boots; blue trunks; wig with long curls; lace sleeves; hat and plume. The colourings may be varied as follows:—Purple and gold; green satin; black velvet; green and white satin, with maroon velvet cloak; blue and red; dark blue and white. For style of dress, *see* CAVALIER, Fig. 8, p. 8.

ROGER DE COVERLEY, SIR. High boots to knee, the top so large they turn back a little, showing the inside; full black velvet trousers tucked into boots; very long flowered waistcoat, almost hiding them; long coat of black velvet; lace ruffles and cravat; low-crowned, broad-brimmed felt hat with plume.

ROMAN BOY (Ancient dress). Soft white woollen toga, bordered with a Greek design in black; orange buskins; antique Roman jewellery; ivy wreath.

ROMAN DRESS (Ancient). Full robe, confined at waist by girdle; under-dress fastened in front with brooch and bordered with gold; wreath round head.

ROMAN PEASANT (Modern). *See* ITALIAN. Cloth jacket; satin vest; cloth trousers; scarf and vest; red cloak floating from back.

ROMAN SOLDIER. *See* JULIUS CESAR. Legs encased in gaiters; sandals; short full red and gold skirt; brass armour encasing bodice; brass helmet with red tuft.

ROMEO. Brown velvet tunic, trimmed with gold braid and lace; white silk hose; cap to match; and sword.

ROMEOS, THE TWO. One side of the face and figure dressed in the Mediæval Italian garb, with "a poetic fancy" inscribed on the breast, the other side of face and figure as a bandit, with "a theatrical fact" on that side of breast.

ROQUELAIRE, DUC DE (a dandy in time of Henri Quatre). Rose-coloured satin doublet, quilted with silk, and embroidered with silk and pearls; sleeves slashed with silver cloth; a gold chain and diamond medallions round neck; velvet cap, with jewelled clasp, and ostrich feathers; stockings bordered with gold lace; Cordova boots of amber leather, with large spurs and high heels.

ROUNDHEAD. *See* CROMWELL. Habit of leather-coloured cloth, with plum-coloured velvet sleeves, slashed with gold; plum-coloured velvet breeches, full and baggy, slashed with gold; steel neck-plate; Puritan linen collar; high-crowned hat; high boots; gauntlet and sword.

ROUSSEAU, JEAN JACQUES. Brown cloth coat; cambric cravat, with no lace; small wig, not powdered; satin breeches, and maroon silk stockings; shoes, with silver buckles; the same at knee; a cane in hand.

RUBENS. Pointed shoes, and bows on instep; breeches to knee, with knots of ribbon; habit of velvet, richly braided in gold, slashed and puffed; sleeves, with straight jockey, or loops at shoulder, and turn-back cuffs of lace; long shoulder-cloak; falling lace collar; sword at side; high-crowned plumed hat; chain round bust. Any rich satins or velvet suitable. *See* Plate VII.

RUPERT, KNECHT. The St. Nicholas of Germany wears a long flowing cloak; soft felt hat, with pointed crown; wallet; staff and birch-rod in hand. He comes loaded with Christmas presents for good children, and administers the rod to the naughty ones.

RUPERT, PRINCE. Cavalier dress of velvet and satin; jacket; doublet; loose trousers; high boots, with lace overhanging the upper part; shoulder-cloak; hat and plume; lace collar and cuffs; sword and cross-belt. This costume is generally richly embroidered with gold lace, and slashed with satin.

RUSSIAN HUSSAR would appear, similar to that of **RUSSIAN NOBLEMAN** below, in dress of green velvet, trimmed with fur and gold.

RUSSIAN NOBLEMAN. High boots of mouse-coloured kid; green satin under-dress; coat and knickerbockers of ruby velvet, all trimmed with grey fur, and embroidered in gold; a gold-bordered belt; fur cap. *See* Fig. 26, p. 54.

RUSSIAN PEASANT. Blue trousers, with bands of gold and brown round the ankles; under-dress of brown cashmere, bordered with blue and gold, cut very low in the neck, showing a margin of white linen at the throat, and no fastening visible; over this a long brown coat reaching to the



Rubens.

4 MAY 1944

knees, bound with blue and gold, showing the waistcoat in front; the sleeves to wrist; a leather belt round the waist beneath coat; round fur-bordered cap; brown leather boots. The Russian peasant, in good truth, wears sheep-skin, with the wool inside; short indigo-blue trousers, made wide, and tucked into long boots, reaching to the knees; flat caps and large beards. In the summer they only wear pink shirts and trousers, costumes little suited to fancy balls.

SACCONI, OR ITALIAN MUTES (who follow at funerals). A figure entirely clothed in white from head to foot. Long white calico monk's dress, and cord about the waist; a pointed cap over the head and face, with holes for the eyes and mouth. This was worn by Mr. Bernal Osborne, at Marlborough House.

SAILOR (English). A favourite costume at fancy balls. It is best to obtain the real sailor dress from a nautical outfitter, either in white drill or serge; viz., loose trousers, loose jacket tucked into them; a belt round the waist, the sleeves of the jacket fastening at the wrist. There is a sailor's collar, very open at the neck, with a silk handkerchief tied in a sailor's knot beneath it; a man-of-war straw hat, or a sou'wester and pea-jacket. The drill suits have the jacket trimmed with blue down the front, and on the cuffs and collar.

SARDANAPALUS. Long robe of white cashmere, braided with red and gold; jewelled girdle and jewelled arm-lets below the short sleeves, reaching to the elbow, showing a dusky Eastern skin, best carried out by brown silk woven coverings for hands and arms. A red cloak, embroidered in gold, drapes the figure; a gold and white Assyrian cap, and a gold circlet on the head; gold-headed wand in the hand; the face brown, the hair black.

SARDINIAN PEASANT. Scarlet waistcoat; blue jacket, trimmed with silver; short white trousers; over this a short black skirt; black gaiters; scarlet cap.

SCHOOLBOY (for a tall man). Green jacket, with triple row of buttons down the front; large frilled collar; grey trousers, short, and buttoned over the jacket; shoes with straps; a satchel with books slung over shoulder.

SCOTCH (Highland costume, the garb of Old Gaul). Black velvet doublet; kilt; plaid and silk stockings; silver dirk; skenedhu and brooch mounted in cairngorms; buttons

and ornaments silver; white sporran mounted in silver; silver bel, with crest and motto. Old Highland dress:—Tartan kilt; scarlet waistcoat; dark jacket; catskin and philabeg. The Prince of Wales at the Waverley Ball, as Lord of the Isles, wore the kilt and belted plaid of his assumed clanship,—a drab leather doublet with steel facings, in the form of a divided breastpleast; the well-known blue-bonnet with the eagle plume; buff leather brogues; scarlet and black hose; buckhorn; dirk and skenedhu, steel gauntlets. Piper of 42nd Highlanders carries bagpipes, besides kilted skirt and philabeg; sporran and plaid fastened with brooch on left shoulder; has white gaiters, over plaid stockings; small Scotch cap; boots; uniform coat.

SERVIAN. Grey, woollen trousers, with bands of gold spangles half way up the leg; blue velvet jacket, trimmed with gold embroidery and *grclots*; red vest; red cashmere scart and revolver at waist; red fez.

SEVENTEENTH CENTURY. The following costume will give some idea of the dress of the period:—Green velvet doublet, embroidered with gold, slashed with satin; buff boots, with lace; full trousers; shoulder cloak. Italian Gentleman of 16th Century:—Doublet and full breeches of rich brocade; long cloth coat decorated with buttons; lace ruffles and cuffs; silk stockings, and shoes with bows; finished at the end by tiny gold balls.

1780. Coats with long open tails, straight collars, large pockets, wide cuffs, embroidered in gold and silver; worked vest worn under the coat; two watch-chains; breeches embroidered, buckles at knee; white clocked stockings; black shoes, with red heels and silver buckles; large shirt front; hair in pigtail; three-cornered hat.

SHAKESPEARE. Elizabethan costume of black velvet and violet satin, bugled; lace-edged collar, turned down and tied at neck with cord and tassels; cuffs to match; flowing locks; pointed beard.

SHAUN THE POST (*Arragh-na-Pogue*). Long green coat; drab corded knee-breeches; grey-ribbed stockings; boots; caubeen, dudheen, and shillelagh; red waistcoat; round wide-awake hat, much the worse for wear. See IRISH CAR-DRIVER.

SHEIK, ARAB. White linen jacket, vest, and wide pantaloons; silk embroidered robe and sash; red fez; silk

turban, inscribed with passages from the Koran ; morocco belt ; ammunition-pouches, and scimitar. *See also* ARAB.

SHEPHERD. Blue stockings ; black shoes ; figured blue cotton bodice, showing only at neck ; and breeches ; bunches of ribbon at knee ; holland smock ; long sleeves, bordered with pink and blue ribbon, embroidered in silk with flowers ; white wig.

SHEPHERD (French, of 9th Century). Loose blouse reaching to knee ; sleeves tight to wrist ; high stockings ; long pointed shoes ; girdle, with carved horn attached ; a crook, with spear-like point. *See also* BERGER.

SHEPHERD OF ABRUZZI. Brown trousers and gaiters tied with strap of leather ; brown coat, and sleeves slung to waist ; coloured scarf to waist ; sheepskin at back ; high hat.

SHEPHERD (Watteau). Shoes and silk stockings ; velvet trousers ; white cambric shirt ; black velvet coat ; white waistcoat, with cape, straw hat, and ribbons ; crook. Sometimes this is rendered in light cashmere, such as grey, trimmed with blue or cherry-colour, when the coat is replaced by a jacket, with sleeves short enough to show muslin sleeves and ruffles. Or as follows:—**Shepherd in the Ballet of Cinq Mars**:—White silk tights ; white satin shoes, and rosettes ; trousers of yellow satin, not reaching to knee, but finished off with mauve bows and long tagged ends ; loose jacket, with same bows ; large turn-down lace collar ; turn-back cuffs to match ; sleeves full, and slashed inside arm, showing white shirt ; white shirt also visible in front, with a triangular set of looped bows at waist ; gold buttons ; white felt hat, yellow feather. **Bulgarian Shepherd**:—Loose full trousers, fastened at the knee, with gaiters below, and low shoes ; braided cloth jacket ; a silk sash round the waist, in which pistols and daggers are thrust ; black woollen vest ; white turban.

SHOEBLACK. Red flannel jacket, with badge on left side ; cap ; ordinary trousers ; blacking-box and brushes.

SHYLOCK. *See* MERCHANT OF VENICE.

SIMPLE SIMON. Old-fashioned blouse ; corduroy trousers ; hobnailed shoes.

SIOUX CHIEF OF NORTH AMERICAN INDIANS. Dress of leather, elaborately embroidered ; feather head-dress. *See* INDIAN CHIEF.

SLOPER. Tight brown trousers, strapped over patent leather boots ; blue coat and brass buttons, fastened so that no shirt is visible ; black stock ; bald head ; white hat, black band ; large green umbrella.

SPANISH. The ordinary peasant wears breeches ; velvet waistcoat ; a scarf about the waist ; a jacket slung from the shoulders, and a pointed hat, which we associate with the large Spanish cloak, entirely enveloping the figure. It is, however, as Spanish *Matadors*, *see* M ; *Picadors*, *see* P ; and *Toreadors*, *see* T, and Illustration, Fig. 27, p. 54, that gentlemen mostly appear at fancy balls. They are generally, on such occasions, dressed the same ; sometimes a crimson cloak completes the costume ; a dagger at the waist ; the hair in net ; a round black hat, with silk rosettes, is worn. *See* TOREADOR.

SPANISH NOBLEMAN (time of Philip II.). Black velvet shoes ; blue silk tights ; breeches and sleeves of black velvet and brocade ; pale yellow sleeveless habit, embroidered in black ; gold belt ; gold chain round neck ; turn-down plaited ruff ; black velvet shoulder-cloak, lined with white satin ; grey hat, and gloves.

SPANISH PAGE. Coat and waistcoat, yellow satin, fastened from waist to throat with silver buttons ; flap pockets ; mauve butterfly bows down flowing fronts of short coat ; linen turn-down collar ; frilling at coat sleeves, which has turned-back cuffs ; knee-breeches of striped satin, bows of ribbon at knee ; white silk stockings ; yellow satin shoes ; mauve bows round felt cap.

SPRITE. Skin-tight suit of gold and red spangled cloth.

STRAFFORD, EARL OF (Charles I.'s reign). Black velvet doublet ; breeches and cloak of black satin, trimmed with bugles, and slashed with blue ; black hose and shoes ; blue rosettes ; hat and plume. For style, *see* Illustration of Charles I., Fig. 7, p. 8.

SULTAN. *See* TURK. Green silk turban, surmounted by gilt crescents ; green silk robe with double sleeves, the



Photo by Lafayette.

Viking.—Winged helmet, flowing satin cloak, chain armour, leggings laced with leather, horn and shield.

4 MAY 1944

inner tight, and of scarlet silk ; the outer, pagoda form, matching the robe ; vest of scarlet silk ; scarlet sash ; full Turkish trousers of green silk, gathered round the ankle ; embroidered slippers ; large beard ; carries a Turkish pipe.

SUN. Close-fitting classic habit of red and gold ; tights, and sandals ; a large star on the breast, another on the head.

SURFACE, CHARLES (*School for Scandal*). Silk stockings ; shoes, with buckles ; breeches ; long-tailed coat and waistcoat ; powdered hair and bag-wig ; lace ruffles and lace necktie, fastened with diamond star. This is always a most elaborate costume, the coat, waistcoat, and trousers made of light satin, and richly embroidered in gold and silver. For example, blue satin coat, with white satin vest and breeches, or lilac or light pink satin suit. See Fig. 28, p. 54.

SURFACE, JOSEPH (*School for Scandal*). Dress of same period and character ; black velvet coat, lined with lavender satin ; lavender satin waistcoat ; black velvet breeches ; black silk stockings ; court sword, and lace ruffles.

SURREY, EARL OF. Silk stockings ; square-toed, or slashed velvet shoes of the period ; full trousers of purple velvet ; long habit of purple velvet and satin, trimmed with gold ; the sleeves puffed ; gold chain round neck ; lace ruff ; round velvet cap, bordered with ermine ; or brown satin doublet ; trunks ; black velvet robe, puffed with black satin.

SWAN UPPER, VINTNER'S. White ducks ; blue and white striped jersey ; blue jacket, with white facings ; silver badge ; hat and feather ; crook in the hand.

SWEDISH PEASANT. High boots ; full trousers ; white shirt, frilled ; tight red sleeves ; black velvet sleeveless jacket, with double row of buttons either side ; waistcoat, with no fastening visible.

SWEEP. Black cloth suit ; black gauze veil over face ; bag carried in hand.

SWISS GUARD OF POPE. Shining helmets ; long halberds in hand ; parti-coloured uniforms, designed by Michael Angelo ; yellow and black stockings ; loose habits of red and yellow, with epaulettes ; leather belts.

SWISS PEASANT. Green stockings and black shoes, with buckles; striped grey cloth trousers to knee; belt round waist; embroidered shirt, tied with ribbons; red jacket; high-pointed hat. Or black velvet coat, and loose trousers, with silver ornaments; red braided waistcoat; sash of many colours; straw hat, and ribbons.

TAR. *See* SAILOR.

TEMPLAR. *See* KNIGHT.

TETRAMONDO (Opera of *Löhengrin*). Dark purple velvet robe over armour. In second act, dark green merino; loose trousers, and blouse; brown pilgrim's cloak.

THEODORE, KING. Tunic and red robe, tiger-skin attached to shoulders; sandals on feet.

THUNDER. Black silk tights; black velvet bodice, embroidered in gold; thunderbolt in hand.

TOBY, DOG (suitable for a little boy). Shaggy fur coat; frills and furbelows; carries a clay pipe.

TOMMY TUCKER. Long linen blouse worn over brown breeches and blue stockings; a turn-down collar; bunch of blue ribbons at the neck; wide straw hat turned up at one side, trimmed with blue ribbons, and bunch of bread and butter protruding out of petticoat.

TOM THUMB (suitable for a boy of three). Breeches of light grey cloth, fastened below the knee; pale blue stockings; dark grey sleeveless habit, fastening down front, blue satin sleeves.

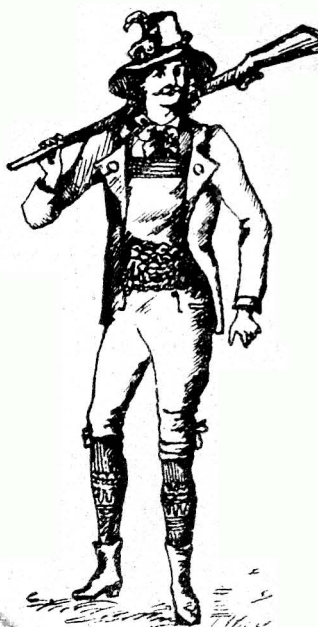
TOM, TOM THE PIPER'S SON. Red breeches, and long red hunting-coat; three-cornered, black cocked hat, bound with gold braid; hair in curls; pipe in hand.

TOREADOR. Short, pale blue trousers to knee, and tight pink silk stockings; short jacket with silver braid; red silk sash round waist. Ruby velvet and French grey is another good mixture, the whole embroidered with gold lace fringe and balls; white satin waistcoat; red stuff cloak may or may not be worn; gold epaulettes; net on head. *See* Fig. 28, p. 54.

TOUCHSTONE. In fool's parti-coloured dress. *See* JESTER, and Illustration, Fig. 16, p. 21.



29. Turk



30. Tyrolean.



4 MAY 1974



William III.

TROVATORE, IL. *See* MANRICO.

TURKISH. Yellow leather shoes; full silk trousers to ankle; long robe, reaching almost to the ankles, bordered with fur, confined at waist by silk scarf, with pistols; sleeves to wrist, the piece to elbow fitting the arm, the rest meeting it in a puff; an overdress, sleeveless, except for straight pendant sleeves, not intended to be worn. It reaches to the waist, and is trimmed with fur. A turban on the head. Crimson and green, blue and crimson, amber and crimson, blue and salmon, are the usual mixtures of colour; the materials, satin, velvet, and cloth. *See* Fig. 29.

TURKISH COSTUME FOR A BOY. Blue cloth for a pelisse, trimmed with braiding and buttons to match; stiff all-round collar; fez and black tassels; full trousers, and yellow shoes.

TYROLEAN. Brown or grey coat, with revers, and breeches ending above the knee; white stockings, embroidered, leaving knee exposed; black shoes; the coat, bound with green, having green collars and cuffs, is wide and open, showing the shirt and vest, across which there are bands of black velvet; and round the waist an elaborate silver embroidered belt; high pointed hat, entwined with silver cord; flowers at the side. *See* Fig. 30.

VALENTINE (*Faust*). Leather jerkin, red velvet and silver fastenings; crimson velvet trunks, with steel trimmings, violet cross puffings; violet tights; black and crimson hat and feather.

VANDYKE. *See* CHARLES I., PERIOD OF; LORD STRAFFORD, &c. Black velvet cloak, embroidered in gold; doublet and trunks, with loops of gold, gold buttons; black velvet cloak, gold cord and tassels; black silk hose, and shoes with bows; black beaver hat, ostrich feathers. The Prince of Wales, in the Vandyke Quadrille at the Marlborough House Ball, wore doublet and cloak of light maroon satin, embroidered in gold; large black felt hat, with white feather; full breeches; loose buff boots; sword; cloak, with diamond star, badge of garter, hanging from blue ribbon; curls on shoulders. **Vandyke Costume for a Boy:** Short basqued jacket of cerise satin, with silver buttons and gold braid, sleeves to wrist with lace cuffs, slashed inside arm, showing white undersleeve; pyramid

of bows at waist; turn-down lace-edged collar; full trousers to knee, with rosettes of ribbon; silk stockings; high-heeled shoes, silk bows; large hat and feather.

VENETIAN. The costume for men consists of satin doublets; trunk hose of different colours, light blue, white, and gold, ruby or green, slashed and embroidered; short cloaks worn from the shoulder; low-crowned hats, with feathers; rapiers; tights, and shoes. *See Fig. 31.* At Marlborough House, as a **Venetian General**, Prince Christian wore a steel gold-inlaid cuirass, bearing the arms of the Republic, clasped over a brown velvet doublet; trunk hose of brown velvet, descending to the buff boots; steel gauntlets; an orange scarf; and a blue ribbon and badge. Some of the suits were embroidered in gold. One robe of gold brocade was worn, with a cape of the same, fastened with large turquoises; and a scarlet, close-fitting cap, with Himalayan pheasant feathers. Lord Hartington wore a doublet, and trunk hose of lavender grey, embroidered with black and gold, having a medallion on his breast. A **Doge of Venice** at a fancy ball would wear black velvet habit, embroidered in gold, lined with cerise satin; mantelette of the same, embroidered, and lined to match; Venetian lace collar; jewelled dagger and sword; velvet hat and plumes; diamond cross, and star; large ample cloak.

VENETIAN BRAVO. Venetian cloak of black velvet, with squares of gold cloth and red satin, trimmed with broad gold lace; black velvet jacket, with edgings of red satin, trimmed to match, ruffles for collar and sleeves; trunks of black velvet, puffed with red satin, edged with gold braid and gold buttons; black silk belt, cap with white feather; red silk tights; black velvet shoes.

VENETIAN SOLDIER OF 16th CENTURY. Leather waistcoat, closely buttoned with gilt buttons; breeches of figured satin; sleeves of plain material thickly slashed; loose cloth cloak; low-crowned hat in silver-grey felt, with side-plumes; leather shoes.

VIERLANDER. Low-crowned brown felt hat; brown jacket, with many silver buttons; red vest, buttoned down front; breeches of brown cloth; stockings and shoes. Sells flowers and fruit. *See Fig. 32.*

WAKEFIELD, VICAR OF, AND FAMILY. Moses Primrose has knee-breeches ; a velvet coat and waistcoat ; and hat with broad brim turning up. The Vicar has the long black velvet square-cut coat of the Georgian period ; a lace necktie ; cravat and ruffles ; black silk stockings ; shoes, with paste buckles ; three-cornered hat, and a powdered wig, and breeches.

WATTEAU DRESSES. Clown costume made in white satin or linen ; wide trousers a little above ankle, showing white shoes, with rosettes ; blouse, with pockets, buttoned down front ; full sleeves, set in band at wrist ; large ruff at throat ; broad-brimmed, felt hat. *See also* WATTEAU SHEPHERD. BERGER.

WAVERLEY. Jackets and trunks of green satin, trimmed with gold lace ; long hanging sleeves of green satin, trimmed with gold and lined with grey satin ; satin hat and plumes.

WHITTINGTON, DICK. Pointed shoes ; brown tights ; brown habit, with leather belt and wallet ; habit opens heart-shape in front, and shows shirt gathered to throat ; stick, with bundle on shoulders ; sleeves, tight to wrist, but puffed at shoulder. Or nankeen breeches ; green coat ; velvet cap ; cat on shoulder.

WILLET, JOE (*Barnaby Rudge*). Green tunic ; top boots ; hunting-breeches, and three-cornered hat.

WILLIAM I. Suit of armour ; jewelled zone ; armlets and sword ; gold crown ; flowing cloak.

WILLIAM III. Coat and breeches of black velvet, embroidered with gold lace ; long white satin vest almost to knee, embroidered in gold ; magenta ribbons on shoulders ; magenta stockings ; black shoes ; flowing curled wig ; lace necktie ; the coat large, long, with full skirt and flap pockets. *See* Plate VIII.

WILLIAM IV. Courtier of the Period. Black velvet coat and waistcoat, with steel buttons ; knee-breeches ; silk stockings ; pumps, with steel buttons ; *chapeau bras* ; powdered wig.

WIND. Blue satin dress and tights, all covered with silver spangles ; vest, tight-fitting, coming to knee ; long sleeves, with ruffles ; cap, with weathercock.

WINDSOR UNIFORM. The Windsor uniform, of blue coat and red collar, dates from the early part of the reign of George III. It has been asserted that the King adopted the blue and red in compliment to the Countess of Pembroke, who at that time was an object of the King's admiration ; blue and red being the colours of the Pembroke livery. This uniform is worn only by members of the Household, or by those to whom the privilege has been granted by the sovereign. The blue coat and red collar are its distinctive characteristics, but the shape of the coat and the other parts of the dress are adapted to the fashion of the day. The coat for ordinary occasions is cut like the usual evening coat, but the full-dress one is made like a military uniform, buttoned up the centre, with a stand-up collar and gold embroidery. A cocked hat, edged with white feathers ; blue trousers, with a broad stripe of gold lace, and a sword, complete the equipment. The present Ministerial and Diplomatic uniforms are the same as the Windsor uniform, with the exception of black velvet in lieu of red collars, and were first introduced during the Regency. Drawings of all State uniforms are deposited in the Lord Chamberlain's office. An Evening Dress Coat, with red cloth or blue silk cuffs and lapels, is an easy and effective method of wearing a fancy costume, and is called Windsor Uniform.

WINTER. *See* FATHER CHRISTMAS, C.

YANKEE. Suit of striped cotton, with high collars ; black necktie ; and large brimmed hat.

ZOUAVE. Close-cropped head, with skull-cap ; Greek jacket ; full red trousers, trimmed with yellow ; high white gaiters ; the jacket and vest of blue cloth, trimmed with silver or gold ; sash round waist fringed.



1. American Indian

40 MAY 1944



Photo by Speaight, Ltd.

Dutch Peasant from Marken, Zuyder Zee.—

Soft hat, striped linen chirt, green tie, full serge breeches, gay coloured handkerchief hanging from pocket, woollen stockings, wooden shoes.



Photo by Speaight, Ltd.

Cowboy.—Felt hat, red shirt, white or khaki coloured breeches, high boots and cartridge belt.



Photo by Royal Central Photo Co., Bourne-mouth.

Italian Musician.—Soft felt cap, white frilled shirt, red tie, brown cloth jacket, short leather trousers fringed below the knee; shoes with ribbon bows, stockings cross-gartered with coloured ribbons, lute suspended with the aid of man hoes.

4 MAY 1944



FANCY DRESSES SUITABLE FOR BOYS

Description of Illustrations.

ACES. (See CARDS, and Figs. 36 and 46.)

ALICE IN WONDERLAND. (See WHITE RABBIT, UNICORN, MARCH HARE, CATERPILLAR, DORMOUSE, MAD TEA PARTY, and HATTER, and Figs. 6, 7, 8, 9, 10, 11.)

AMERICAN INDIAN. Our illustration shows one of the American Indians who appeared at the Wild West Show in London, 1887,—“Flies Above,” by name. He has a bronzed face, painted with ochre and other pigments; the dress is of fringed untanned leather, with copious trimmings of feathers. The horns form the head-dress; he carries a bow and tomahawk. Similar costumes may be richly embroidered. (See Fig. 1.)

ARCADIAN SHEPHERD. Loose classic robe of white cashmere girdled at the waist; a scarf draped across the bodice, garlanded with roses; short sleeves, gold armlets; the head encircled with roses. Sandals on feet. (See Fig. 2.)

ARTABAN (*Le Gascon*). Leather habit with belt, striped epaulettes, embroidered sleeves, trunks of velvet and satin, long leather boots, sword; striped woollen cloak hanging from the shoulders; broad-brimmed felt hat with feathers. (See Fig. 3.)

BEEFEATER, OR YEOMAN OF THE GUARD
(See description on page 10, and Fig. 4.)

CARDS, PACK OF. (See Figs. 36 to 48.)

THE KING OF HEARTS. Gold crown enclosing royal blue velvet cap; blue velvet coat with white satin revers, lined with

straw colour ; white silk tunic with brown velvet bands ; red cashmere hearts ; yellow silk stockings, blue velvet shoes. (See Fig. 41.)

KING OF CLUBS. Gold crown with lis de vin velvet cap and tunic ; maize satin front and lining to sleeves ; olive green velvet coat edged with ermine ; lis de vin stockings ; clubs in black velvet. (See Fig. 44.)

KING OF DIAMONDS. Gold crown with peacock velvet ; blue velvet cap and tunic, the latter brocaded on lemon-coloured silk ; dark green velvet coat with ermine and yellow silk revers, linings, and stockings ; red cashmere diamonds. (See Fig. 38.)

KING OF SPADES. Gold crown with prune velvet cap ; black cashmere spades ; prune velvet tunic and cloak, facings pale salmon satin ; gold trimmings and ermine. (See Fig. 47.)

The **KNAVES** are carried out in the same colourings as the respective Kings. (See Figs. 39, 42, 43, 48.)

The Cards are as follows :—

DIAMONES in black velvet and white satin. (See Fig. 37.)

HEARTS. Just au corps of violet velvet with over and under-sleeves of dark peacock blue, also cap ; sashes and bows of straw coloured silk ; tights of peacock blue silk. (See Fig. 40.)

CLUBS. Scarlet and white. (See Fig. 45.)

ACE OF HEARTS. Tunic, sleeves, border of cap, and shoes, royal blue velvet ; over-sleeves white satin figured with blue ; border of tunic, gorget, and shield and cap amber satin ; tights amber satin and grey. (See Fig. 46.)

ACE OF DIAMONDS. Olive green velvet tunic, trimmed with dark blue satin edged with gold, lined with straw-colour ; same on cap ; tights straw colour and golden brown to match under-sleeves ; tunic of brocaded silk. (See Fig. 36.)

CATERPILLAR (*Alice in Wonderland*). This dress is entirely composed of green velvet and satin. The velvet cap and leggings are formed like the skin of the insect ; green velvet shoes ; large sleeves to green satin gown ; white lace tie at throat. (See Fig. 6.)

CAVALIER, CHARLES I. TIME. Dress consisting of habit, short loose breeches, and shoulder cape of



52. Standard Bearer, Edward I.



53. Standard Bearer, Edward IV.



54. Standard Bearer, Tudor.



55. Standard Bearer, George IV.

LORD MAYOR OF LONDON. Black silk stockings, black shoes and buckles; black velvet court breeches and coat, with white lace ruffles; black brocaded damask satin robe, trimmed with gold. He wears the collar of office, with the double-S and York and Lancaster rose and portcullis, the city jewel bearing the city coat of arms, with "Domine Dirige Nos;" three-cornered black hat with large ostrich plumes. (See Fig. 22.)

MAD TEA PARTY. (*Alice in Wonderland.*) Alice, the Dormouse (see D) the March Hare, and the Hatter (see H) take part in this. (See Figs. 8, 9.)

MARCH HARE. Fur tights and tail; striped waistcoat, brown velvet jacket, cap like hare's head, silk necktie in bow. (See Figs. 8, 9.)

MASANIELLO. (See p. 41, and Fig. 20.)

MAYOR, LORD. (See LORD, and Fig. 22.)

MEPHISTOPHELES. Peaked shoes, silk stockings; breeches; loose habit with collar and hood made in red and black striped satin; face painted with red lines. (See p. 42, and Figs. 26, 27.)

MURGATROYD (*From Ruddygore*). (See DESPARD, and Figs. 58, 59.)

NEAPOLITAN FISHERMAN. (See p. 33, and Fig. 25.)

NEW YEAR. Suited to a child of very tender years. Full, short, white satin trousers; loose bodice with sash; in front a placard printed with a calendar and date of year, same on white satin cap. (See Fig. 50.)

OAKAPPLE, ROBIN (*Ruddygore*). Black shoes, grey gaiters; breeches with ribbons at the knee; old-fashioned waistcoat with watch chain; tail coat with velvet collar; felt hat, high crown. (See Fig. 56.)

PACK OF CARDS. (See CARDS, and Figs. 36 to 48.)

PAGE. Striped tights to waist; short velvet jacket with full white skirt which shows beneath; large lace collar, sleeves puffed at shoulder and elbow; long curled hair cut straight across forehead; staff in hand. (See also VENETIAN, HUNGARIAN and RUSSIAN. also p. 48, and Figs. 28, 29, 30, 31.)

PENSIONER, GENTLEMAN. (*See* GEORGE IV.)

PIERROT. Black shoes, red stockings; loose white trousers edged with frill falling over ankle; loose white blouse with frill at edge, red rosettes in front, long pendent sleeves coming a quarter of a yard below the hand; large white plaited ruff, black skull cap, face painted red and white. (*See* Fig. 35.)

PIPER, SCOTCH. (*See* SCOTCH, and Fig. 34.)

PRINCES IN TOWER. (*See* p. 52, and Fig. 32.)

RABBIT, WHITE (*Alice in Wonderland*). White fur tights; brown plush waistcoat; check coat; umbrella; high collar; head of rabbit for cap. (*See* Fig. 7.)

RICHARD DAUNTLESS (*Ruddygore*). (*See* DAUNTLESS, and Fig. 57.)

ROBIN OAKAPPLE (*Ruddygore*). (*See* OAKAPPLE, and Fig. 56.)

ROMEO. Grey silk tights; pink velvet habit trimmed with white fur, front embroidered; belt, aumoniere bag at side, sleeves slashed with white muslin; long cloak lined with silver grey; pink velvet cap and feathers. (*See* Fig. 33.)

RUDDYGORE. (*See* ROBIN OAKAPPLE, SIR DESPARD MURGATROYD, RICHARD DAUNTLESS, and Fig. 56 to 59.)

RUSSIAN PAGE. Cream leather untanned shoes with buckles, red stockings; cream velvet habit trimmed with gold and dark fur, a red sash round the waist, white muslin undersleeves; white felt cap trimmed with fur. (*See* Fig. 29.)

SCOTCH PIPER. With bagpipes, black shoes and buckles, plaid stockings, kilt of tartan, white sporran, highland jacket and waistcoat made in black cloth; Scotch cap with plume and brooch. (*See* Fig. 34.)

SERVANT. Black flapped shoes, silk stockings; red plush breeches; white cloth coat with ruffles, red waistcoat; lace tie; powdered hair tied with black ribbon. (*See* Fig. 49.)

SHEPHERD. (*See* ARCADIAN, and Fig. 2.)

SPADES. (*See* CARDS, and Figs. 39 to 48.)

STANDARD BEARERS. Tudor Period. Low crowned velvet hat, with brim encircled with red, blue and white ribbon; Tudor habit of red cloth worked with the Tudor rose, and trimmed with gold braid and black velvet; black breeches tied with red, white, and blue satin ribbon; silk stockings, black shoes, red, white and blue rosettes. **Charles II. time.** Large felt hat, white plume; ruff; violet velvet habit with satin and gold braid, and gold embroidered arms; sleeves with white satin slashings and double puffs at top; violet satin breeches and silk stockings; shoes with rosettes. **George IV.** Red velvet loose habit emblazoned with royal arms in gold, white satin slashed and red striped tight sleeves, with red velvet, loose embroidered upper ones; ruff at throat, ruffles at wrist; white satin breeches tied at knee with gold fringed satin; black shoes, rosettes of white satin; bows on shoulder; red velvet peaked cap with plumes of red velvet. **Edward III.** Coat of mail, white cloth habit with red cross; helmet with plume; mailed gloves; shield on arm. (See Figs. 52, 53, 54, 55.)

ST. JOHN, KNIGHT OF. (See S., and Fig. 24.)

TUDOR STANDARD BEARER. (See S., and Fig. 54.)

UNICORN (*Alice in Wonderland*). Unicorn head for cap, with one horn; breeches and close fitting habit of red trimmed with black and gold, slashed epaulettes and basque to jacket; black stockings and shoes. (See Fig. 11.)

UNIFORM, GALA. (See GEORGE IV., and Fig. 15.)

VENETIAN PAGE. Velvet slashed shoes; breeches and habit of snuff-coloured velvet, with dark brown satin slashings; shoulder cloak; belt and ruff; plumed cap. (See Fig. 31.)

WHITE RABBIT. (See RABBIT, and Fig. 7.)

WILLIAM III. This is the costume worn by Mackintosh, in "Lord Clancarty." The costume is rendered in black velvet and black satin, with lace ruffles. (See Fig. 51.)

YEOMAN OF GUARD. (See BEEFEATER, and Fig. 4.)



56. Robin Oakapple.



57. Richard Dauntless.

FROM "RUDDYGORE."

4 MAY 1946



58, 59. Sir Despard Murgatroyd, Bart.

FROM "RUDDYGORE."

4 MAY 1944